



Technical Service Bulletin

35 Gearbox Malfunction Warning, DTC P0C2900, P176F00, P176E00, P175E00, P175D00, P189900, P060700, P081000 in the TCM

35 23 46 2050723/4 October 9, 2023. Supersedes Technical Service Bulletin Group 35 number 23-43 dated August 2, 2023, for reasons listed below.

Model(s)	Year	VIN Range	Vehicle-Specific Equipment
A3	2017 – 2018	All	Not Applicable
S3	2018		

Condition

REVISION HISTORY		
Revision	Date	Purpose
4	-	Revised <i>Service</i> (Note added)
3	06/27/2018	Revised <i>Service</i> (Added transmission identification instructions and photo)
2	06/13/2018	Initial publication

Customer states:

- The “Gearbox Malfunction” message has appeared in the Drivers Information Screen (DIS).

Workshop findings:

One or more of the following DTC(s) may be logged in the transmission control module (TCM), J217 (address word 0002):

- **DTC P0C2900** (Auxiliary Transmission Fluid Pump Driver Circuit Performance)

And/Or

- **DTC P175E00** (clutch 1 closes unintentionally)

And/Or

- **DTC P176F00** (clutch 2 closes unintentionally)

And/Or

- **DTC P176E00** (clutch 2 opens unintentionally)

And/Or

- **DTC P175D00** (clutch 1 opens unintentionally)

And/Or

- **DTC P189900** (clutch 2 function restriction)

And/Or



Technical Service Bulletin

- **DTC P060700** (control module implausible)

And/Or

- **DTC P081000** (control module implausible)

Various other DTCs may also be logged with the above DTCs in the transmission control module (TCM), J217 (address word 0002).

Technical Background

Component related issue of auxiliary hydraulic pump (Figure 1).

Legend for picture below:

Item 1: auxiliary hydraulic pump 1 for gearbox oil (V475)

Item 2: electrical connection for auxiliary hydraulic pump 1 for gearbox oil (V475)

Item 3: electric motor for auxiliary hydraulic pump 1 for gearbox oil (V475)

Item 4: main ATF pump

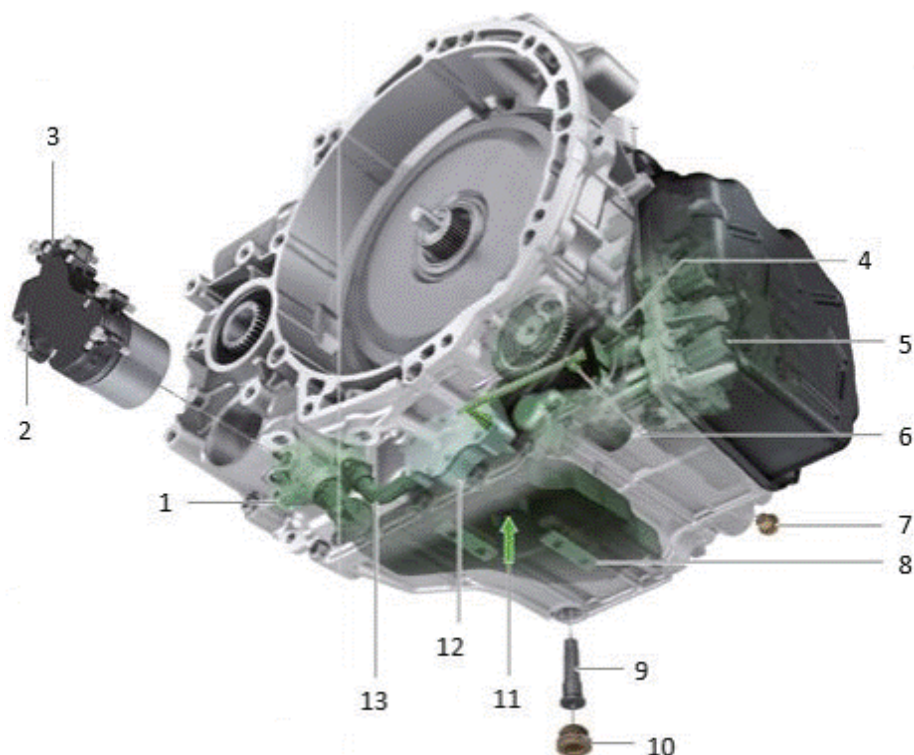
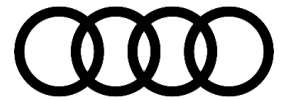


Figure 1. 0GC Gearbox Components.

Production Solution



Technical Service Bulletin

Improved auxiliary hydraulic pump in production.

Service

Obtain the transmission identification information from the bellhousing (Figure 2).

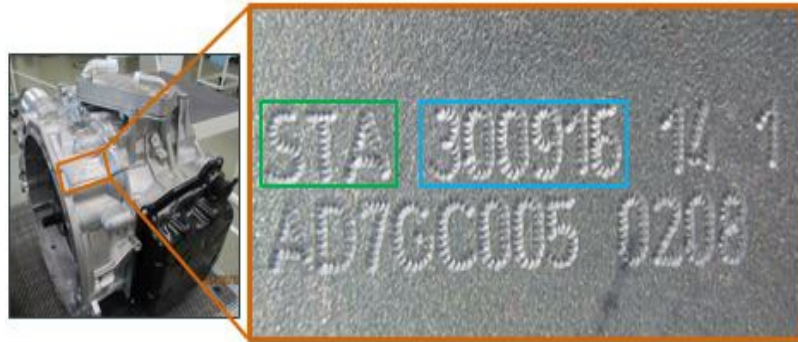


Figure 2: Transmission identification example.

Explanation of data on gearbox:

Gearbox code: STA (green box).

Gearbox Production date: **300916** = **03.09.2016** (blue box).

Date format: Day/Month/Year

- If the gearbox production date is after 26.09.2017, this TSB does not apply. Proceed according to Guided Fault Finding. Please note that in this case, the costs for the repair cannot be billed under this TSB.
- If the gearbox production date is on or before 26.09.2017, continue as described below.

Scenario 1: Only required for vehicles on which the 34L4 Service Action has **not** been performed.

- If the 34L4 Service Action is open for the vehicle, perform it completely and this TSB does not apply.

Scenario 2: Only required for vehicles on which the 34L4 Service Action has already been performed and no parts were replaced as a part of the campaign.

The 34L4 Service Action has been performed on the vehicle, and the auxiliary hydraulic pump was not replaced, and only the DTC “P0C2900 – Auxiliary Transmission Fluid Pump Driver Circuit Performance” is logged in the transmission control module (TCM), J217 (address word 0002).

Replace the auxiliary hydraulic pump according to the instructions attached to this TSB (Figure 3), and the parts information listed below. The event memory of the gearbox electronics (diagnostic address 002) must then be erased according to the attached instructions.



Figure 3: Attachments tab in the repair manual.

For an example of the repair procedure, see the video located at:

<https://audi-external.kzoplatform.com/player/medium/2535675175601443997>



Technical Service Bulletin


This video is also attached to this TSB under the attachments tab in the workshop manual, and can be accessed with the QR code shown here (Figure 4).



Figure 4: QR code for viewing the supporting video with a QR code reader on phones and tablets. Alternatively, the video can be accessed through computer internet browsers at the link provided in this bulletin.

Scenario 3: Only applies if the 34L4 Service Action has been performed and the auxiliary hydraulic pump was replaced as a part of the campaign.

- If the 34L4 Service Action has been performed on the vehicle and the auxiliary hydraulic pump was replaced as a part of the campaign, this TSB does not apply and you should proceed according to Guided Fault Finding.

 NOTICE
<p>If secondary damage is found on the dismantled gearbox, or the adjacent components, follow the instructions in the Workshop Manual which apply at the time.</p>

Warranty

Claim Type:	<ul style="list-style-type: none"> • 110 up to 48 Months/50,000 Miles. • G10 for CPO Covered Vehicles – Verify Owner. • If the vehicle is outside any warranty, this Technical Service Bulletin is informational only. 		
Service Number:	3479		
Damage Code:	0010		
Labor Operations:	Remove and install gearbox	3435 19 xx	See SRT with associated operations.
	Replace hydraulic pump (Front Wheel Drive Only)	3479 5599	350 TU



Technical Service Bulletin

	Replace hydraulic pump (All Wheel Drive Only)	3479 5699	380 TU
Diagnostic Time:	GFF	0150 0000	Time stated on diagnostic protocol (Max 50 TU)
	Road test prior to service procedure	No allowance	0 TU
	Road test after service procedure	No allowance	0 TU
Claim Comment:	As per TSB 2050723/4		

All warranty claims submitted for payment must be in accordance with the *Audi Warranty Policies and Procedures Manual*. Claims are subject to review or audit by Audi Warranty.

Required Parts and Tools

The part numbers mentioned in this TSB are different than the ones listed in ETKA. Only use parts listed in this TSB, this includes superseding part numbers!		
Part Number	Part Description	Quantity
See ETKA	Fasteners, Bolts, Nuts and Screws as needed per the Repair Manual	See ETKA/ELSA
D 174 003 M2	Sealant	0.5
G 055 529 A2	Dual clutch gearbox oil	7
WHT 000 729 A	Bolt (For noise insulation)	5
N 103 320 02	Nut (For transverse link)	6
N 015 081 6	Nut (For coupling rod)	2
N 912 010 01	Bolt (For pendulum support)	1
N 107 848 01	Bolt (For pendulum support)	1
N 107 847 01	Bolt (For pendulum support)	1
N 105 524 02	Bolt (For steering rack)	2
N 908 461 02	Bolt (For front propeller shaft) only for vehicles with all-wheel drive	3



Technical Service Bulletin

N 910 669 01	Bolt (For center propeller shaft) only for vehicles with all-wheel drive	4
WHT 005 179	Bolt (For rear propeller shaft) only for vehicles with all-wheel drive	3
N 911 082 01 Or N 909 910 02	Bolt For drive shaft (For gearbox mounting)	6 or 12
N 105 524 04	Bolt (For assembly mounting)	3
N 107 854 01	Bolt (For assembly mounting)	6
N 910 889 01	Bolt (For bevel box) only for vehicles with all-wheel drive	4
0BH 325 147	Retaining clip (For mechatronics unit cover)	1
0GC 927 377	Gasket (mechatronics unit cover)	1
0GC 398 008 D	Repair kit (For auxiliary hydraulic pump)	1
06B 105 313 C or 06B 105 313 D	Needle bearing (order to VIN)	1

Additional Information

All parts and service references provided in this TSB (**2050723**) are subject to change and/or removal.

©2023 Audi of America, Inc. All rights reserved. The information contained in this document is based on the latest information available at the time of printing and is subject to the copyright and other intellectual property rights of Audi of America, Inc., its affiliated companies, and its licensors. All rights are reserved to make changes at any time without notice. No part of this document may be reproduced, stored in a retrieval system, or transmitted in any form or by any means, electronic, mechanical, photocopying, recording, or otherwise, nor may these materials be modified or reposted to other sites without the prior expressed written permission of the publisher.