



Technical Service Bulletin

GROUP BODY	NUMBER 23-BD-015H
DATE SEPTEMBER 2023	MODEL(S) SANTA CRUZ (NXT)

SUBJECT: FUEL FILLER DOOR REPLACEMENT FOR PAINT IMPERFECTIONS

Description: This bulletin provides instructions to inspect and replace the fuel filler door on 2023MY Santa Cruz (NXT) vehicles that exhibit paint imperfections such as: sag, bubble, blemish, crater, or dirt.

i Information

Issues with alignment, fit, or function do NOT apply to this TSB.

Applicable Vehicles:

- 2023MY Santa Cruz (NXT) vehicles produced from 4/17/2023 – 4/28/2023

Parts Information:

Part Name	Part Number	Remarks
Fuel Filler Door	69511-K5000	Only replace for paint imperfections listed in this TSB

Warranty Information:

Model	Op. Code	Operation	Op. Time	Casual Part	Nature Code	Cause Code
Santa Cruz (NXT)	30DA07R0	Fuel Filler Door Replacement (Paint Imperfections Only)	0.3 M/H	69511-K5000	A22	ZZ8

NOTE 1: Submit claim on Claim Entry Screen as “Campaign” type.

NOTE 2: If a part is found in need of replacement while performing this campaign and the affected part is still under warranty, submit a separate claim using the same repair order. If the affected part is out of warranty, submit a Prior Approval request for goodwill consideration prior to performing the work.

NOTE 3: This TSB includes Repair validation photos. Op times include VIN, Mileage and Repair validation photos as outlined in the Digital Documentation Policy.

NOTE 4: The incident parts are subject to callback through the normal Warranty Technical Center (WTC) parts return process. **Claim is subject to debit if the part is not returned.**

NOTE 5: Only a fuel door that exhibits one or more of the paint imperfections specified in the service procedure are subject to replacement. Claims submitted that do not match the imperfections specified are subject to debit.

Service Procedure:

STUI

This TSB includes Repair validation photos. Refer to the latest Digital Documentation Policy for requirements.

1. Refer to Figures 1 – 5 below to identify if the fuel filler door exhibits one or more of the listed manufacturing paint imperfections.

i**Information**

Issues with alignment, fit, or function do NOT apply to this TSB.

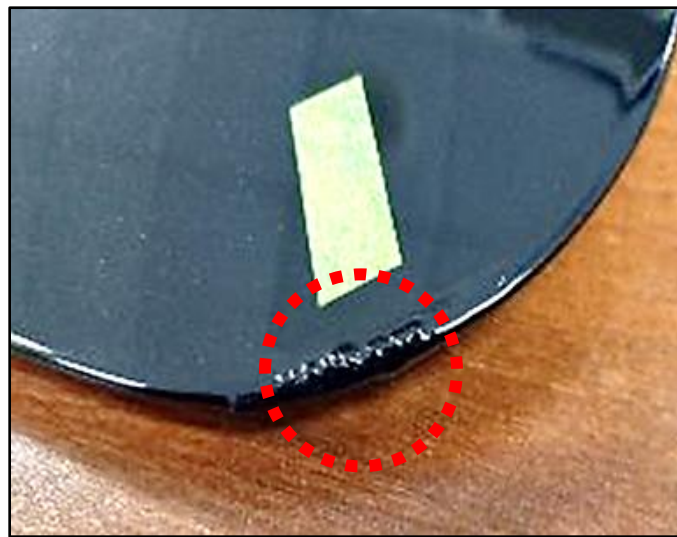


Figure 1: Paint Sag



Figure 2: Paint Dirt

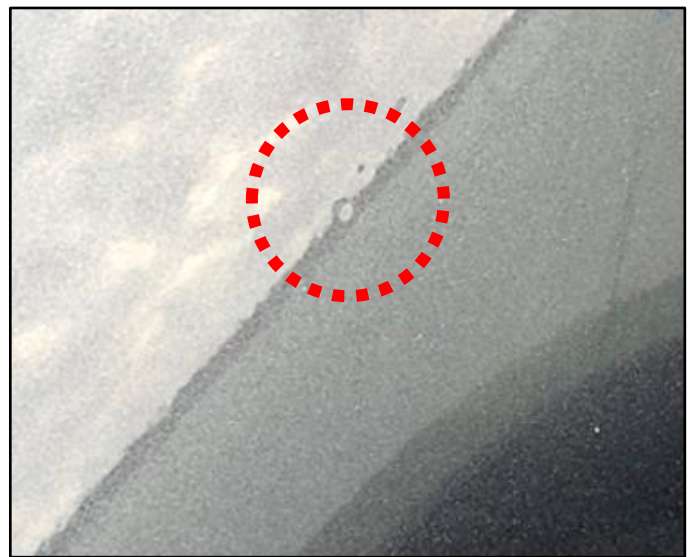


Figure 3: Paint Crater

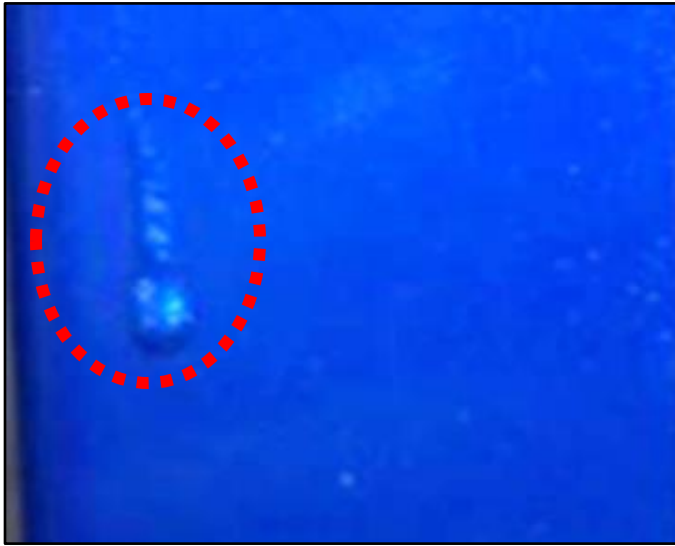


Figure 4: Paint Bubble

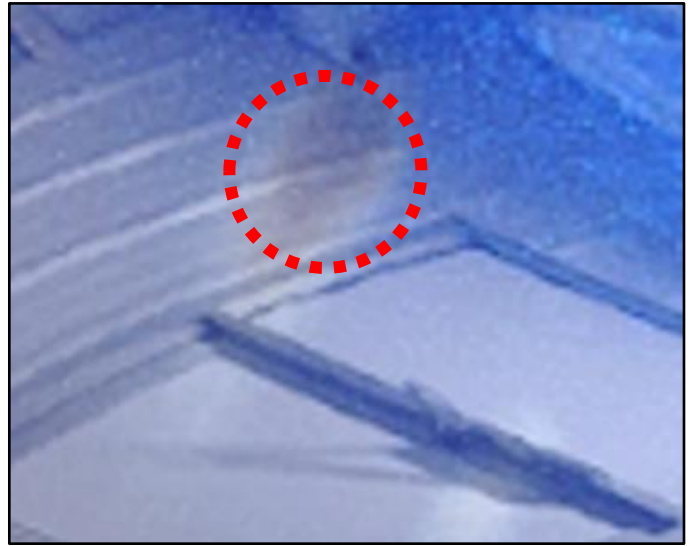


Figure 5: Paint Blemish

2.

STUI

Using STUI, take a photo of the paint imperfection and upload to STUI.



3. Replace the fuel filler door (A) with a new part.

Refer to Shop Manual:

- **Body (Interior and Exterior) > Fuel Filler Door > Repair Procedures**

4. Service procedure is complete.

