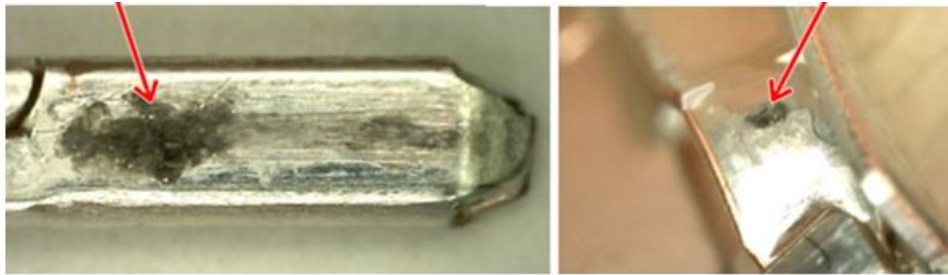


<b>REFERENCE:</b>	<b>TSB:</b> 10-001-23 <b>GROUP</b> 10 - Restraints	<b>Date:</b>	August 25, 2023	<b>REVISION:</b>	
<b>VEHICLES AFFECTED:</b>	2015 - 2022 (B1) Jeep Renegade 2015 - 2018 (BU) Jeep Renegade 2019 - 2022 (BV) Jeep Renegade 2019 - 2022 (FD) Fiat 500X 2015 - 2018 (FB) Fiat 500X This bulletin applies to vehicles built on before December 31, 2022 (MDH 1231XX)	<b>MARKET APPLICABILITY:</b>			
		<input type="checkbox"/> NA		<input checked="" type="checkbox"/> MEA	
		<input checked="" type="checkbox"/> SA		<input checked="" type="checkbox"/> IAP	
		<input checked="" type="checkbox"/> EE		<input type="checkbox"/> CH	
<b>CUSTOMER SYMPTOM:</b>	Customers may experience a Malfunction Indicator Lamp (MIL) illumination. Upon further investigation the technician may find one or more of the following Diagnostic Trouble Codes (DTCs) has been set: <ul style="list-style-type: none"> <li>• B0050-1D - Driver Front Buckle Switch - Out of Range (Active or Stored).</li> <li>• B0050-13 - Driver Front Buckle Switch - Circuit open (Active or Stored).</li> </ul>				
<b>CAUSE:</b>	Micro vibrations between buckle and seat wiring connectors causing male and female terminal corrosion (Fig. 1) .				



**Fig. 1**  
**Terminal Corrosion**

**REPAIR SUMMARY:**

This bulletin involves replacing the inline seat connector.

**CLAIMS DATA:**

Labor Operation No:	Labor Description	Skill Category	Labor Time
23-20-87-03	Connector, In Line Seat, Replace (1 - Semi-Skilled)	6 - Electrical and Body Systems	0.9 Hrs.
Failure Code	ZZ	Service Action	

**SPARE PARTS:**

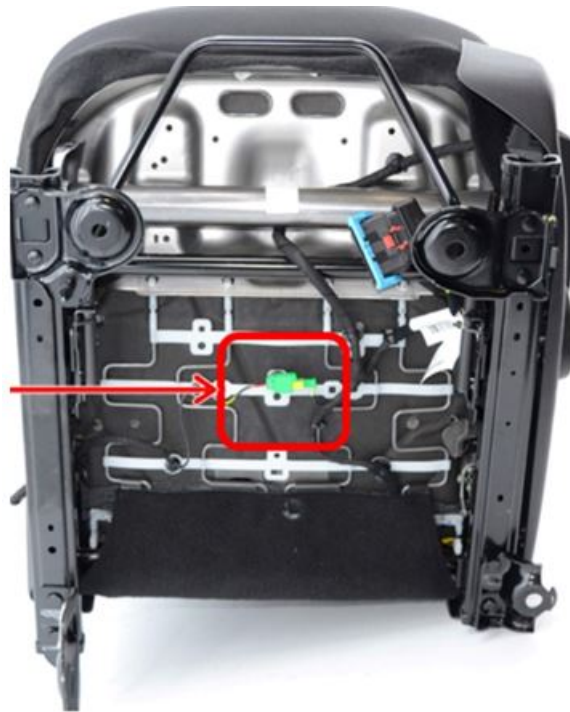
Qty	Part No.	Description	Notes
1 (AR)	68601668AA Mopar 71774583 EE/MEA	Connector, Male	
1 (AR)	68602011AA Mopar 71774436 EE/MEA	Connector, Female	
4 (AR)	68372091AA Mopar 11105485 EE/MEA	Shrink Tube	
1 (AR)	0893223	Wurth, Silicone Spray	Or Equivalent

**DIAGNOSIS:**

If the customer describes any of the symptoms listed above in the customer symptom section, perform the Repair Procedure.

**REPAIR PROCEDURE:**

1. Remove the front driver's seat and put it on a clean work area. Refer to the detailed service procedures available in DealerConnect>Service Library under: Service Info> 23 - Body / Seats, First Row / Seat, Front / Removal.
2. On the seat bottom, locate the seat belt buckle in line connector (Fig. 2) .



**Fig. 2**  
**Seat Belt Buckle In Line Connector Location**

3. Remove the old seat belt buckle connector.

4. Splice in the new in line connector. Refer to the detailed service procedures available in DealerConnect>Service Library under: Service Info> 10 - Restraints / Standard Procedure Supplemental Restraint System Wiring Repairs.
5. After replacing the connector, apply WURTH Silicone Spray 0893223 grease or equivalent product. A small amount is needed to be applied on the pins of the female connector (seat belt side) .
6. Install the front driver's seat. Refer to the detailed service procedures available in DealerConnect>Service Library under: Service Info> 23 - Body / Seats, First Row / Seat, Front / Installation.
7. Using wiTECH clear all DTC that may have been set performing this repair procedure.

**POLICY:**

Reimbursable within the provisions of the warranty.

*This bulletin is supplied as technical information only and is not an authorization for repair. No part of this publication may be reproduced, stored in a retrieval system, or transmitted, in any form or by any means, electronic, mechanical, photocopying, or otherwise, without written permission of FCA US LLC.*