



STAR ONLINE PUBLICATION



Case Number: S2323000064

Release Date: August 2023

Symptom/Vehicle Issue: Water Leak In Rear Of Vehicle Near The Liftgate.

Customer Complaint/Technician Observation: After a car wash, weather rain event or even snow melt the liftgate area is wet with clear water.

Discussion: Inspect the D pillar liftgate drain trough for pin holes in the body sealer joints (Fig 1). See examples in Fig 2 of holes in sealer. If holes are found, use clear seam sealer such as Kent Products p10200 or equivalent. Follow manufacture's instructions for application and cure time.

This document does not authorize warranty repairs. This communication documents a record of past experiences. STAR Online does not provide any conclusions about what is wrong with the vehicle. Rather, it captures all previous cases known that appear to be similar or related to the vehicle symptom / condition. You are the expert, and you are responsible for deciding on the appropriate course of action.

Contact STAR Center, or your Technical Assistance Center Via TechConnect, eCONTACT or Service Library entry if no solution is found.



STAR ONLINE PUBLICATION

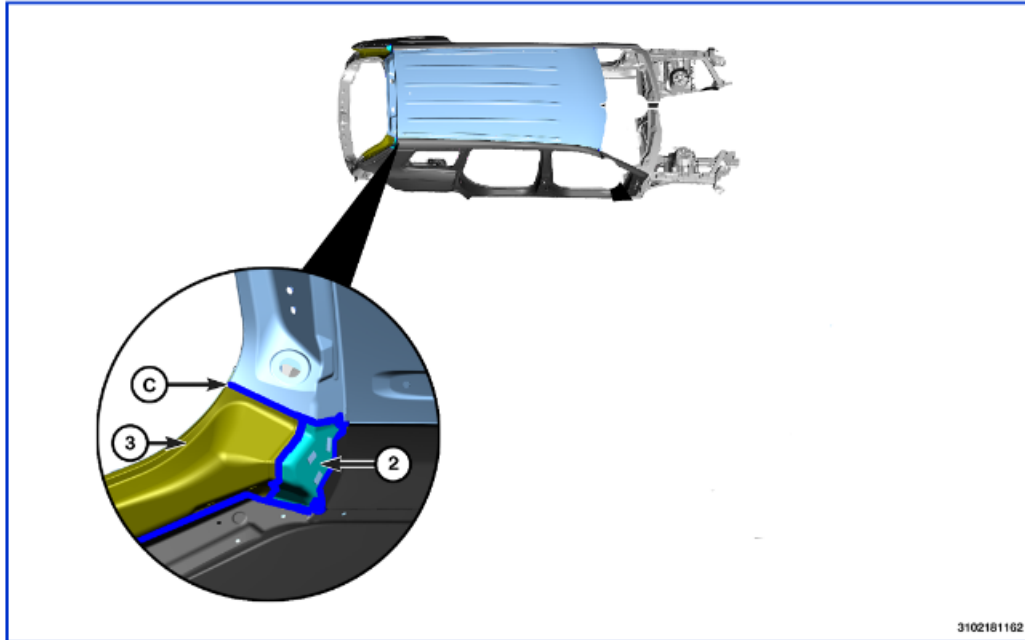


Figure 17 - Roof Panel (1 of 2)

NOTE: Applies to all roof panels variations.

[1- Roof Panel](#)

[2- Quarter Upper Trough](#)

[3- Liftgate Opening Drain Trough](#)

Fig 1
Location of D Pillar Drain Trough

This document does not authorize warranty repairs. This communication documents a record of past experiences. STAR Online does not provide any conclusions about what is wrong with the vehicle. Rather, it captures all previous cases known that appear to be similar or related to the vehicle symptom / condition. You are the expert, and you are responsible for deciding on the appropriate course of action.

Contact STAR Center, or your Technical Assistance Center Via TechConnect, eCONTACT or Service Library entry if no solution is found.



STAR ONLINE PUBLICATION

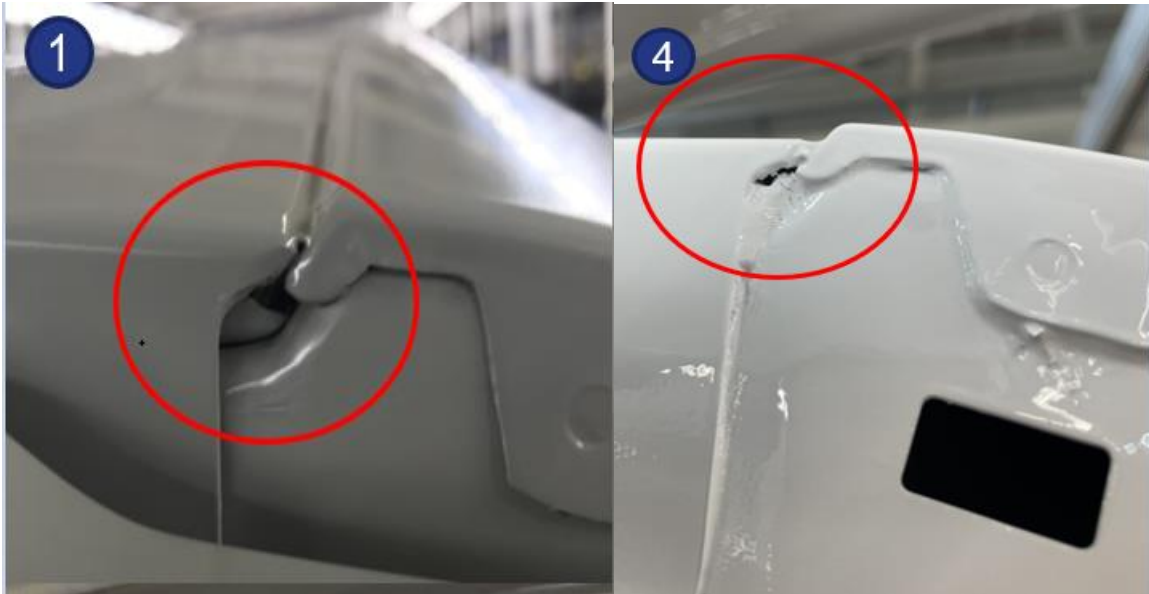


Fig 2
Examples Of Holes In D Pillar Drain Trough Sealer.

This document does not authorize warranty repairs. This communication documents a record of past experiences. STAR Online does not provide any conclusions about what is wrong with the vehicle. Rather, it captures all previous cases known that appear to be similar or related to the vehicle symptom / condition. You are the expert, and you are responsible for deciding on the appropriate course of action.

Contact STAR Center, or your Technical Assistance Center Via TechConnect, eCONTACT or Service Library entry if no solution is found.