



STAR ONLINE PUBLICATION



Case Number: S2323000061

Release Date: August 2023

Symptom/Vehicle Issue: Water Entering Rear Of Vehicle At Liftgate Striker Area.

Customer Complaint/Technician Observation: After a car wash, power washing, or a rain/weather event customer may notice water puddling near the liftgate striker.

Discussion: If there is water found near the striker or in the rear spare tire well area, remove the rear liftgate scuff plate and liftgate weatherstrip. Refer to Service Library 23 - Body / Interior / PLATE, Scuff, Liftgate / Removal and Installation. Using Mopar Butyl Tape 04076274AB, fill the 2 openings shown in Fig 1 to prevent water entry. Install the weatherstrip and liftgate scuff plate. Water test to confirm the repair.

This document does not authorize warranty repairs. This communication documents a record of past experiences. STAR Online does not provide any conclusions about what is wrong with the vehicle. Rather, it captures all previous cases known that appear to be similar or related to the vehicle symptom / condition. You are the expert, and you are responsible for deciding on the appropriate course of action.

Contact STAR Center, or your Technical Assistance Center Via TechConnect, eCONTACT or Service Library entry if no solution is found.



STAR ONLINE PUBLICATION

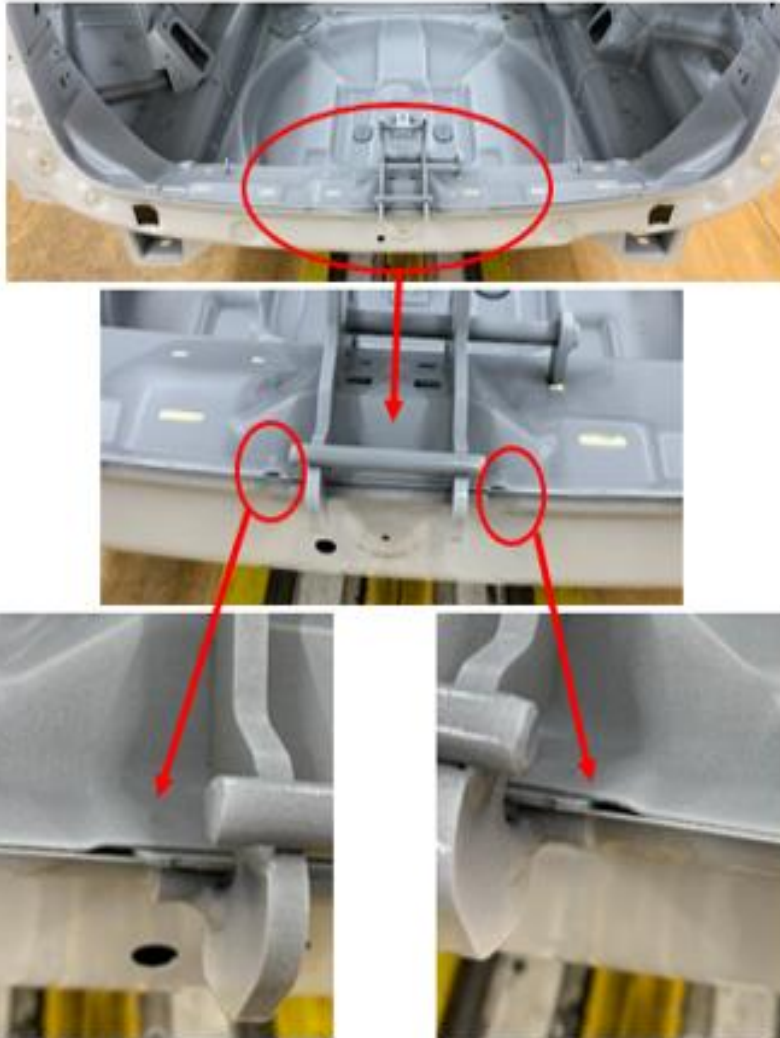


Fig 1.
Liftgate Opening Sill Area.

This document does not authorize warranty repairs. This communication documents a record of past experiences. STAR Online does not provide any conclusions about what is wrong with the vehicle. Rather, it captures all previous cases known that appear to be similar or related to the vehicle symptom / condition. You are the expert, and you are responsible for deciding on the appropriate course of action.

Contact STAR Center, or your Technical Assistance Center Via TechConnect, eCONTACT or Service Library entry if no solution is found.