

Rear Lid Does Not Open / Rear Lid Lock is Faulty: Performing Water Ingress Test (246/22)

Change overview

Release	Date	Change
0	01/17/2023	<ul style="list-style-type: none"> First publication
1	08/07/2023	<ul style="list-style-type: none"> Information inserted Procedure added Labor operations updated

Model Line: **Taycan Cross Turismo (Y1B) / Taycan Sport Turismo (Y1C)**

Model Year: **As of 2021 up to 2023**

Concerns: **Lower part of rear lock (rear lid lock)**

Information: Customers or Porsche Centers complain that the rear lid does not open.
A defective rear lid lock is detected in the workshop.

Cause: A possible leak in the rear lid or the body seal in the area of the sealing duct can cause water to leak in. As a result, the rear lid lock can be damaged.

Action required: To prevent repeat repairs in the event of an existing customer complaint, check the following areas for water ingress:

- Rear lid
- Rear lid seal
- Body seal in sealing duct area

Required parts and materials as needed

Parts Info:	Part No.	Designation	Number
	9J0827705Y	⇒ Seal for rear lid	1 piece

Materials: **Required materials** (usually already available at the Porsche dealer):

Part No.	Designation	Number
...	Body sealant	As required
...	Touch-up stick in vehicle color*	As required

Preparatory work

Work Procedure: 1 Remove tail light in rear lid.
⇒ *Workshop Manual '943119 Removing and installing rear lid tail light'*



Information

Remove and replace broken clips where necessary.
Residues that may fall into the body must be removed.

Checking water ingress of rear lid

Work Procedure: 1 Protect electric plug connections against water ingress.

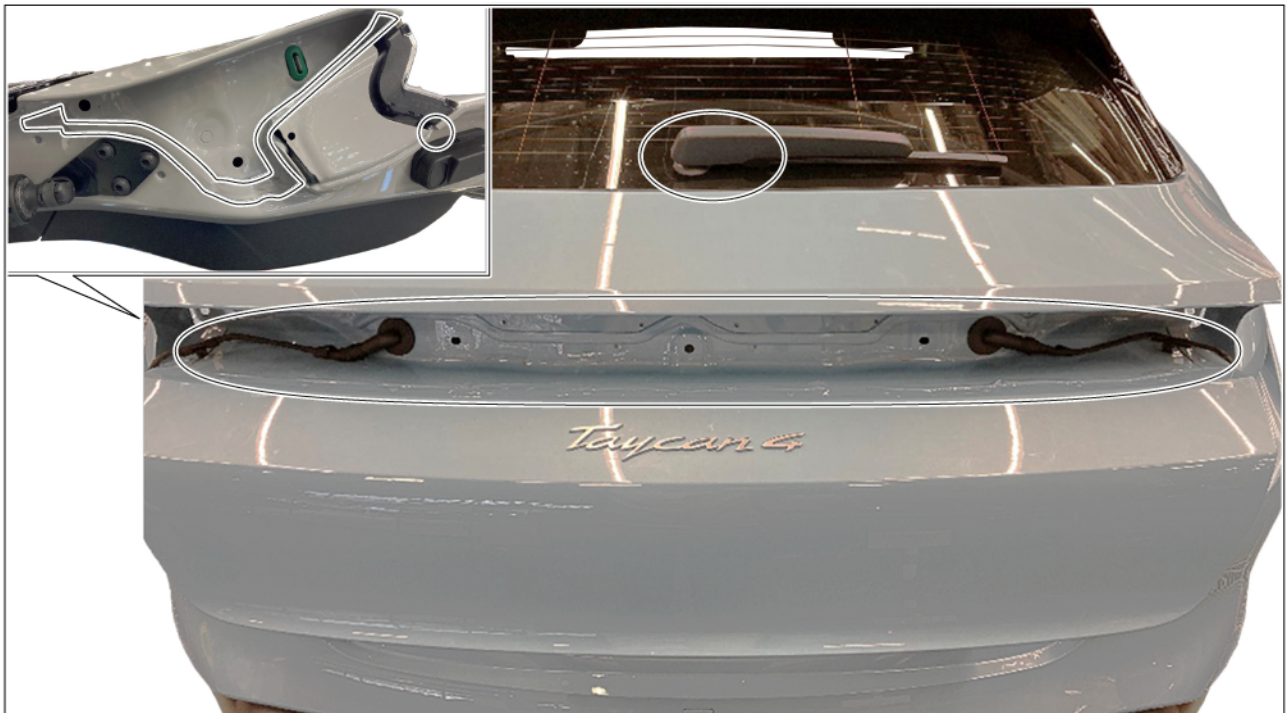
2 Water closed rear lid for **approx. 5 minutes**.



Information

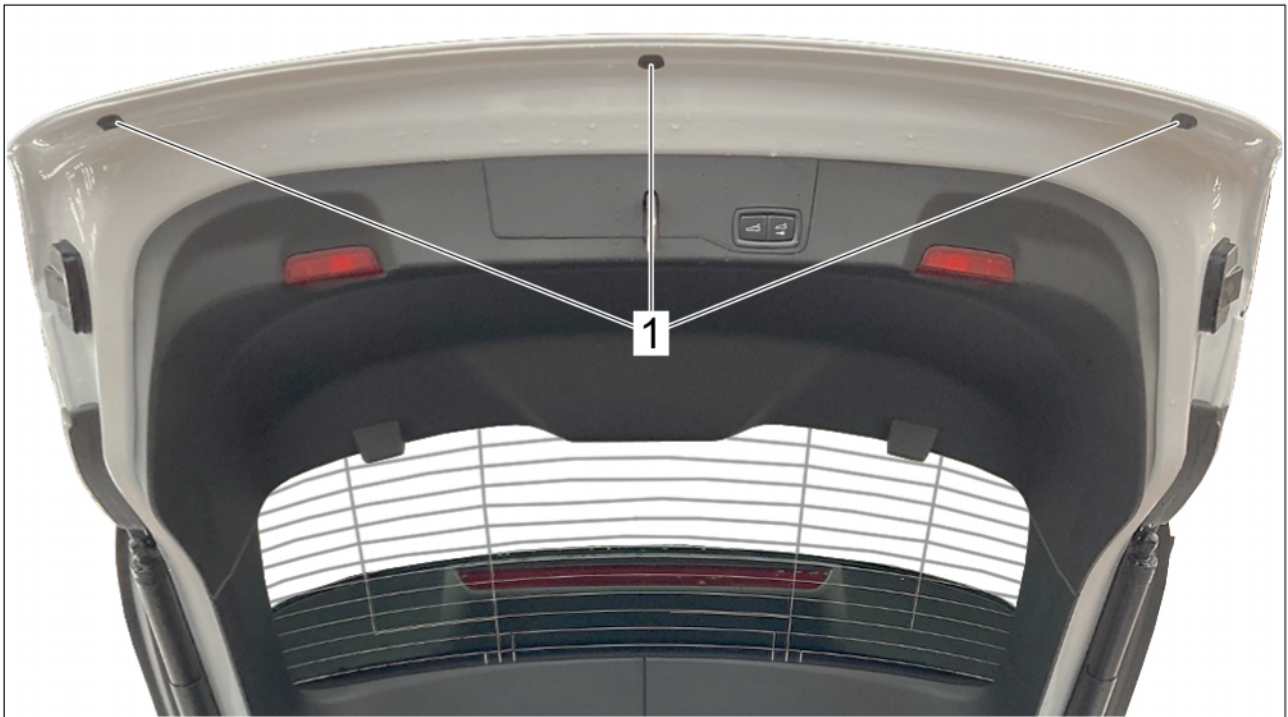
Focus on the following areas:

- Gaps in the rear lid
- Center body for the rear and brake lights
- Windshield wiper seal



Rear lid areas

- 2.1 Operate the washing function of the rear wiper several times while watering.
- 3 Open the rear lid.
- 4 Remove stopper ⇒ *Stopper in rear lid -1-*.

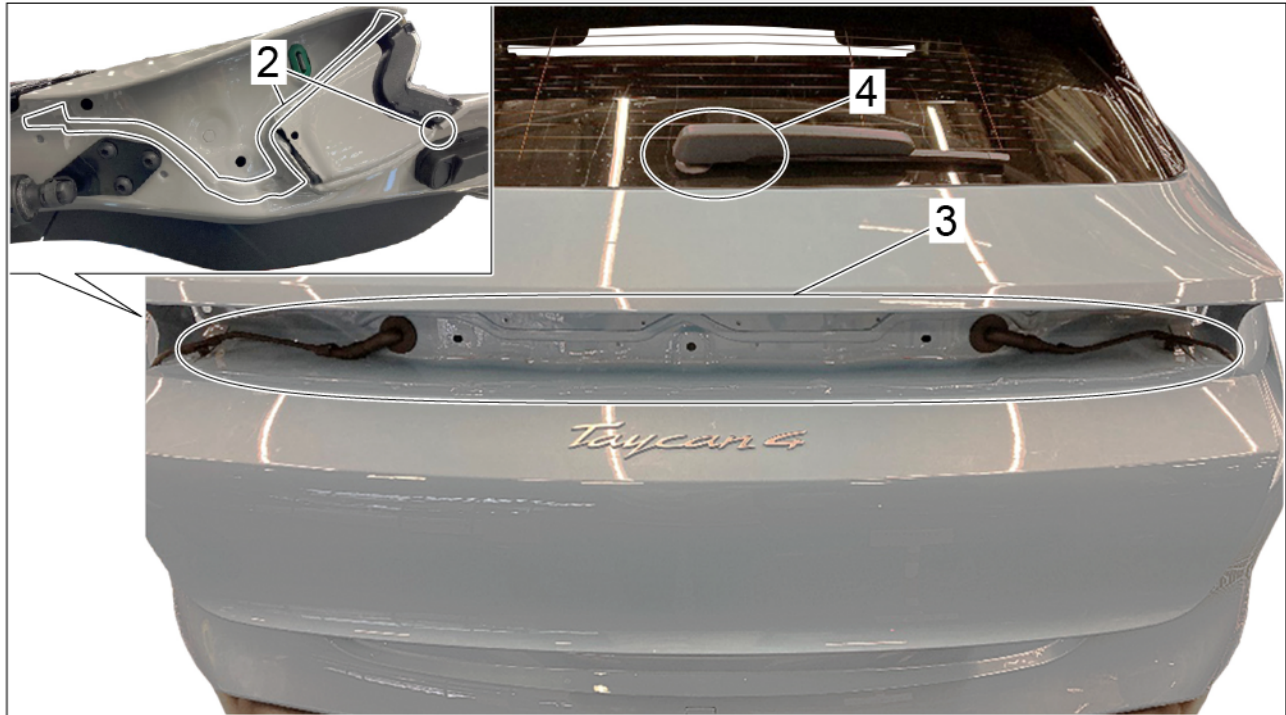


Stopper in rear lid

- 5 Lower the rear lid, and check for leaking water at the openings on the stoppers that were previously removed.
- 6 If water ingress could be detected, search for the cause in the following areas primarily:
 - Body seal ⇒ *Rear lid -2 and 3-*
 - On the washer water line for the rear window washer system
 - Rear wiper seal ⇒ *Rear lid -4-*
- 6.1 After the water ingress has been clearly located, depending on the leakage point either:
 - Seal the affected body area with body sealant, and then rework with a touch-up stick.
 - Replace the rear wiper seal.
 - Repair/replace the washer water line.

Then re-insert the stoppers ⇒ *Stopper in rear lid -1-* in the rear lid.

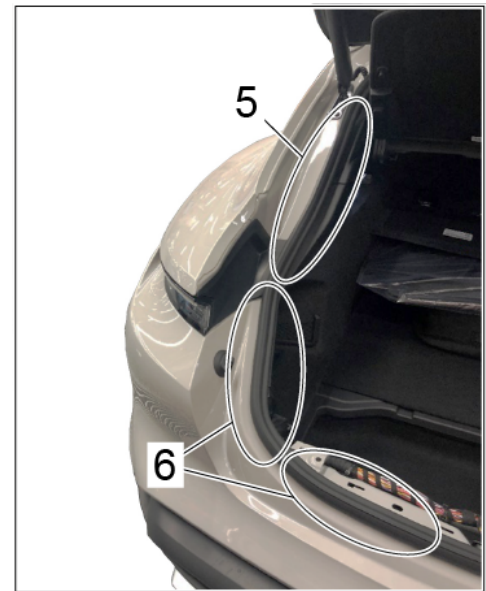
- 6.2 If no water ingress could be detected, ⇒ *Stopper in rear lid -1-* re-insert the stoppers in the rear lid and continue with ⇒ *Technical Information '943119 checking for water ingress using body seal on sealing duct and rear lid seal'*



Rear lid

Checking body seal on sealing duct and rear lid seal for water ingress

- Work Procedure: 1 Removing cover for rear lock carrier.
⇒ *Workshop Manual '703919 Removing and installing cover for rear lock carrier'*
- 2 Remove luggage compartment trim panel (luggage compartment cover).
⇒ *Workshop Manual '70061900 Removing and installing (centre) luggage compartment trim panel (luggage compartment cover)'*
⇒ *Workshop Manual '70061901 Removing and installing (side) luggage compartment trim panel'*
- 3 Remove subwoofer if available.
⇒ *Workshop Manual '913619 Removing and installing Bose subwoofer'*
⇒ *Workshop Manual '913619 Removing and installing Burmester subwoofer'*
- 4 Protect electric plug connections against water ingress.
- 5 Water the sealing duct in the area ⇒ *Overview of luggage compartment seal -5-* for **approx. 5 min.**



Overview of luggage compartment seal

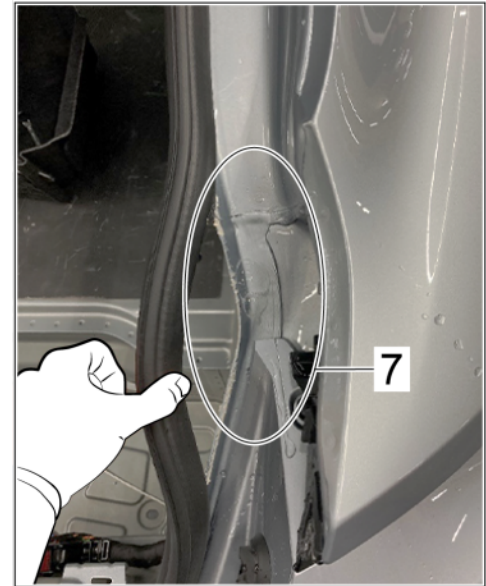
- 6 Check luggage compartment in the area ⇒ *Overview of luggage compartment seal -6-* for traces of water.
- 7 Repeat the procedure on the other vehicle side of the vehicle.
- 8 If water is found to have entered the luggage compartment, find the cause on the respective side of the vehicle in the area of the rear lid seal or on the body seal area ⇒ *Water ingress into rear lid seal -7-*.



Information

If the rear lid seal is partially or completely removed, it must be replaced.

- 8.1 Once the water ingress has been clearly located, seal the affected area with body sealant, and rework with a touch-up stick.



Water ingress into rear lid seal

Concluding work

Work Procedure: 1 Install tail light in rear lid.
⇒ *Workshop Manual '943119 Removing and installing rear lid tail light'*

Invoicing

For documentation and invoicing in the event of a warranty, state the work items required depending on the scope of work and the specified PCSS encryption in the warranty claim:

APOS	Labor operation	I No.
55860140	Check lower part of rear lid lock (Sport Turismo)	
55860141	Check lower part of rear lid lock (Cross Turismo)	
55864940	Rework rear lid lock lower part (Sport Turismo without subwoofer)	
55864941	Rework rear lid lock lower part (Cross Turismo without subwoofer)	
55864942	Rework rear lid lock lower part (Sport Turismo with subwoofer)	
55864943	Rework rear lid lock lower part (Cross Turismo with subwoofer)	

PCSS encryption:

Location (FES5)	55860	Rear lid lock lower part
Damage type (SA4)	1621	does not open

Important Notice: Technical Bulletins issued by Porsche Cars North America, Inc. are intended only for use by professional automotive technicians who have attended Porsche service training courses. They are written to inform those technicians of conditions that may occur on some Porsche vehicles, or to provide information that could assist in the proper servicing of a vehicle. Porsche special tools may be necessary in order to perform certain operations identified in these bulletins. Use of tools and procedures other than those Porsche recommends in these bulletins may be detrimental to the safe operation of your vehicle, and may endanger the people working on it. Properly trained Porsche technicians have the equipment, tools, safety instructions, and know-how to do the job properly and safely. Part numbers listed in these bulletins are for reference only. The work procedures updated electronically in the Porsche PIWIS diagnostic and testing device take precedence and, in the event of a discrepancy, the work procedures in the PIWIS Tester are the ones that must be followed.

© 2023 Porsche Cars North America, Inc.