



INFINITI

TECHNICAL SERVICE BULLETIN

Classification: BT23-011	Reference: ITB23-024	Date: August 14, 2023
-----------------------------	-------------------------	--------------------------

NOISE FROM MOONROOF WHEN OPEN

APPLIED VEHICLES: 2022-2023 QX60 (L51)
APPLIED DATES: Built from August 23, 2021 to September 21, 2022

IF YOU CONFIRM

Ticking / flutter / vibrating noise when the moonroof (sunroof) is open and the vehicle is traveling 35-50 mph.

ACTION

Follow the **SERVICE PROCEDURE** outlined in this bulletin to install a strip of soft foam in the sunroof opening.

IMPORTANT: Do not replace the Wind Deflector to correct the noise concern.

IMPORTANT: The purpose of **ACTION** (above) is to give you a quick idea of the work you will be performing. You **MUST** closely follow the entire **SERVICE PROCEDURE** as it contains information that is essential to successfully completing this repair.

Bulletins are intended for use by qualified technicians, not 'do-it-yourselfers'. Qualified technicians are properly trained individuals who have the equipment, tools, safety instruction, and know-how to do a job properly and safely. **NOTE:** If you believe that a described condition may apply to a particular vehicle, **DO NOT** assume that it does. See your Infiniti retailer to determine if this applies to your vehicle.

SERVICE PROCEDURE

1. Measure and cut the soft foam from **PARTS INFORMATION** in two (2) 650 mm (25.625 in.) pieces (Figure 1 and Figure 2).

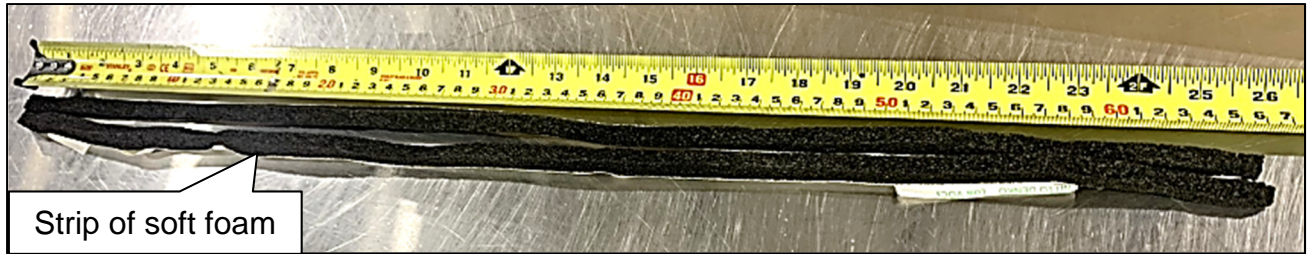


Figure 1

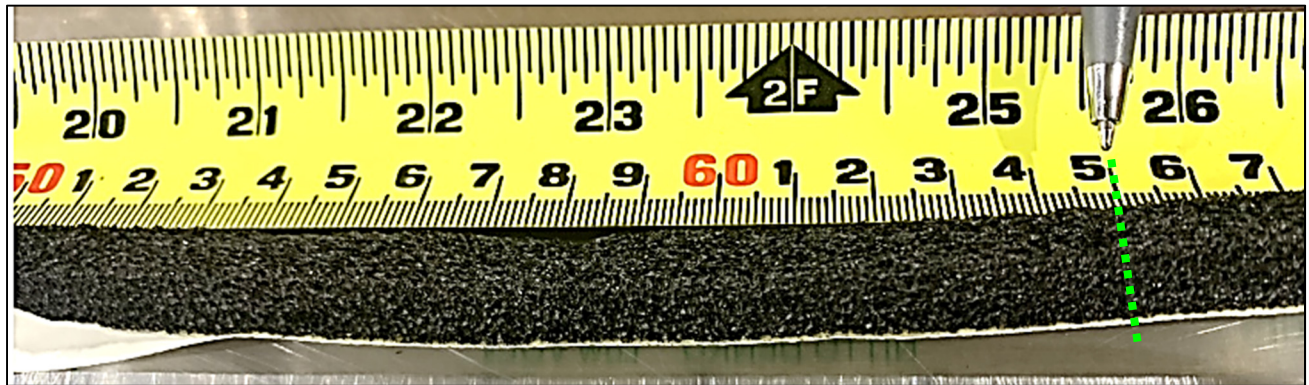


Figure 2

2. Remove the adhesive backing from each soft foam piece and place the adhesive sections together (Figure 3), creating one piece of soft foam (Figure 4).



Figure 3



Figure 4

- Center the strip of soft foam (approximately 10x20x650 mm) to the sunroof opening.



Figure 5

- Starting in the center and working out to the edge, insert the soft foam between the sunroof plastic frame and the lower edge of the sheet metal (Figure 7).

HINT:

- The strip of soft foam must be installed in the center of the sunroof opening. Do not begin installing the soft foam on either edge of the sunroof opening.
- Hold the Wind Deflector down while applying the soft foam.
- No adhesive is necessary. The soft foam is wedged between the lower edge of sheet metal and plastic frame.

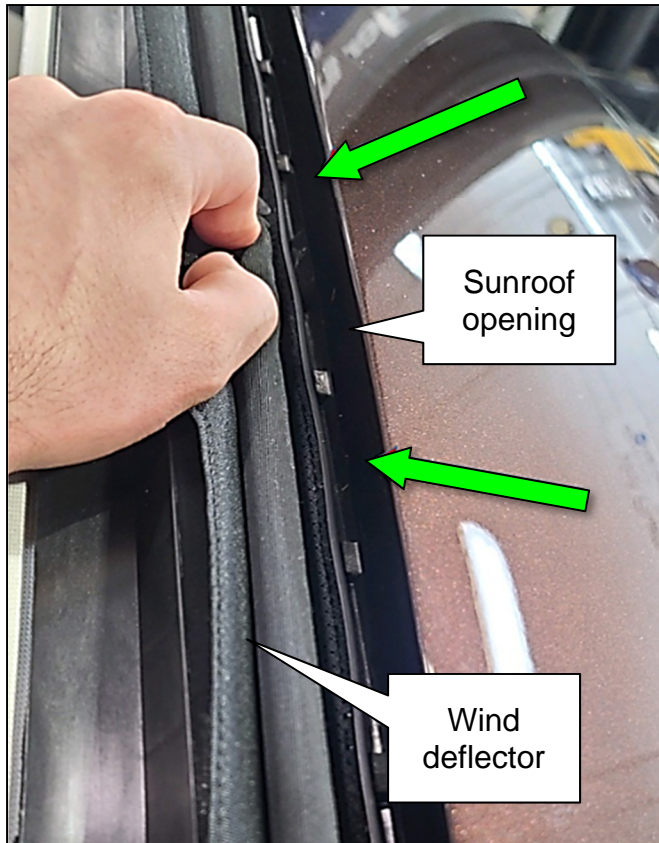


Figure 6

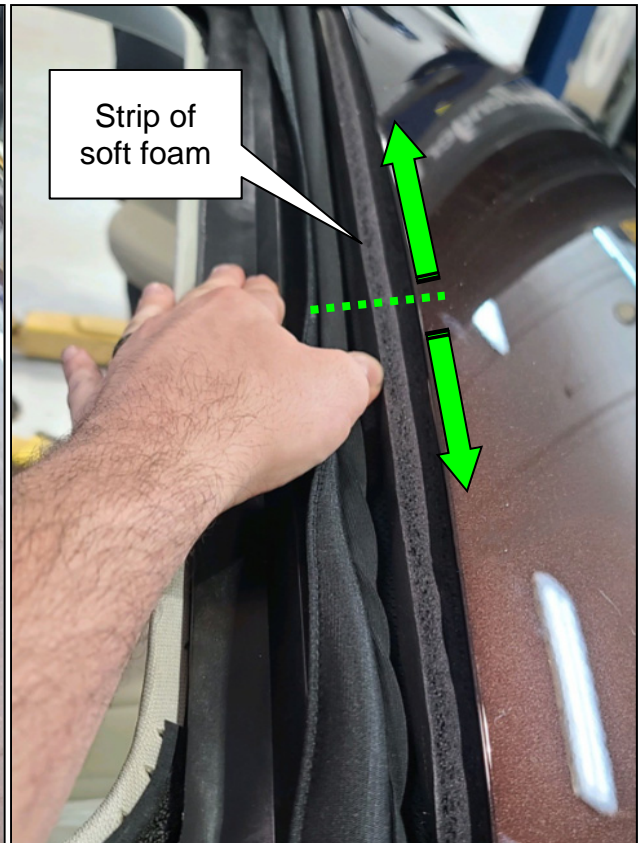


Figure 7

PARTS INFORMATION

DESCRIPTION	PART NUMBER	QUANTITY
SEAL-INSTRUMENT (Soft foam)	68232-9HE0A	1

CLAIMS INFORMATION

Submit a Primary Part (PP) type line claim using the following claims coding:

DESCRIPTION	PFP	OP CODE	SYM	DIA	FRT
Install Foam for Noise – Moonroof	(1)	BX8EAA	ZL	32	0.3

- (1) Reference the electronic parts catalog and use the Sunroof Deflector (91280-*****) as the Primary Failed Part (**PFP**).

AMENDMENT HISTORY

PUBLISHED DATE	REFERENCE	DESCRIPTION
August 14, 2023	ITB23-024	Original bulletin published

