

GLOBAL SAFETY FIELD INVESTIGATIONS
DCS6666
URGENT - DISTRIBUTE IMMEDIATELY

Date: September 5, 2023

Subject: REVISION: N222375791-08 - Customer Satisfaction Program
Park Assist Retrofit
Warranty Information Table Improvements

Models: 2022 – 2023 Buick Enclave
2022 – 2023 Buick Encore GX
2022 – 2023 Cadillac XT4
2022 – 2023 Cadillac XT5
2022 – 2023 Cadillac XT6
2022 Chevrolet Blazer
2022 – 2023 Chevrolet Camaro
2022 Chevrolet Colorado
2022 Chevrolet Silverado 1500 LTD
2022 – 2023 Chevrolet Silverado 2500HD/3500HD
2022 – 2023 Chevrolet Trailblazer
2022 – 2023 Chevrolet Traverse
2022 – 2023 GMC Acadia
2022 GMC Canyon
2022 GMC Sierra 1500 Limited
2022 – 2023 GMC Sierra 2500HD/3500HD

To: All General Motors Dealers

This bulletin has been revised to improve the Warranty Information table and to simplify the Service Procedure. Please discard all previous copies of N222375791.

END OF MESSAGE

GLOBAL SAFETY FIELD INVESTIGATIONS

Customer Satisfaction Program

N222375791 Park Assist Retrofit



Release Date: September 2023

Revision: 08

Revision Description: This bulletin is being revised to improve the Warranty Information table and to simplify the Service Procedure. Please discard all previous copies of N222375791.

Attention: This program is in effect until September 30, 2026.

Make	Model	Model Year		RPO	Description
		From	To		
Buick	Enclave	2022	2023		
Buick	Encore GX	2022	2023		
Cadillac	XT4	2022	2023		
Cadillac	XT5	2022	2023		
Cadillac	XT6	2022	2023		
Chevrolet	Blazer	2022	2022		
Chevrolet	Camaro	2022	2023		
Chevrolet	Colorado	2022	2022		
Chevrolet	Silverado 1500 LTD	2022	2022		
Chevrolet	Silverado 2500HD/3500HD	2022	2023		
Chevrolet	Trailblazer	2022	2023		
Chevrolet	Traverse	2022	2023		
GMC	Acadia	2022	2023		
GMC	Canyon	2022	2022		
GMC	Sierra 1500 Limited	2022	2022		
GMC	Sierra 2500HD/3500HD	2022	2023		

Involved vehicles are marked "Open" on the Investigate Vehicle History screen in GM Global Warranty Management system. This site should always be checked to confirm vehicle involvement prior to beginning any required inspections and/or repairs.

Condition	Due to the industry-wide semiconductor shortage, the park assist feature is not functional on certain 2022 and 2023 model year vehicles listed above, built beginning December 2, 2021. The affected vehicle owners should have been made aware of the condition at sale, and notified, that once parts are available, they would be eligible for a no additional cost retrofit to enable the feature.
Correction	Dealers are to replace the park assist control module to restore the Park Assist feature. Note: some vehicles may also require reprogramming of the instrument cluster or the active safety control module.

Parts – MUST BE ORDERED BY SPAC, PLEASE SEE NOTES BELOW

Quantity	Part Name	Part No.
1	Parking Assist Module	84421595
1	Parking Assist Module	39156865
1	Parking Assist Module	84716060
1+	Nut	11516836
2++	Nut	11546389
1+	Retainer	20732399
2*	Nut	11546449
1**	Fastener	01605396
1***	Thread Locking Adhesive	19333511 (US) 10953489 (CA) Obtain locally in compliance w/ GM spec GMW14657

Note: Only 1 module needs to be ordered per vehicle. Use the VIN and the GM Electronic Parts Catalog (EPC) to determine which parts to order.

+Colorado/Canyon Only

++Encore GX/Trailblazer Only

*For all vehicles with the following exceptions: XT4 only uses 1 nut, No nuts are required for Camaro, Colorado/Canyon and Encore GX/Trailblazer use different retainers.

**XT4 only.

Customer Satisfaction Program

N222375791 Park Assist Retrofit



***Enclave only, one tube services 10 vehicles.

Do NOT place orders until the customer contacts the dealership to schedule an appointment.

Parts required to complete this recall are to be obtained from General Motors Customer Care and Aftersales (GMCCA). Please refer to your “involved vehicles listing” before ordering parts. Parts for this Retrofit will be on Order Writing control initially and all DRO’s (Daily Replenishment Orders) may cancel. Dealers should place orders CSO (Customer Special Order) and upgrade to SPAC with a VIN. **All orders will be reviewed prior to being filled. All CSO may be cancelled daily. Only SPAC orders with a valid VIN associated with the vehicle listing will be released while on the order writing control. Due to order writing control orders will not ship as OVN. Please take this into consideration in shipping if not coming from your Admin PDC.**

Reminder: Parts will be removed from SPRINT, they are non-returnable and may be removed from Retail Inventory Management (RIM). Dealers should review the affected parts to confirm RIM managed status. Parts may have quantity limiters in effect.

For Dealers Location Outside of US/Canada, please order from your regional service part facility.

Steps For A Successful Order on Retrofit:

1. Validate your VIN is open by checking Investigate Vehicle History (IVH)
2. Validate what part number is needed for the VIN
3. Verify that this part for this VIN has not been ordered previously by your dealership
4. Place a CSO order
5. Upgrade to a SPAC case immediately following placing CSO
6. Order will be released once VIN information has been verified
7. One part per VIN
8. Use the part on the VIN it was ordered for
9. If an order was cancelled and you are unable to determine why, please seek assistance from your District Manager Aftersales (DMA)

Warranty Information

Model	RPOs	Modules	Labor Code	Labor Time
Camaro	All Combinations	Clear TLC Cache, Reprogram Parking Assist Module, Configure Parking Assist Module, Setup/Configure Instrument Cluster	9106540*	0.8
XT6	All Combinations	Clear TLC Cache, Reprogram Parking Assist Module, Configure Parking Assist Module, Setup/Configure Instrument Cluster	9106540*	0.8
XT5	All Combinations	Clear TLC Cache, Reprogram Parking Assist Module, Configure Parking Assist Module, Setup/Configure Instrument Cluster	9106540*	1.6
XT4	With UD7	Clear TLC Cache, Reprogram Parking Assist Module, Configure Parking	9106540*	1.2

Customer Satisfaction Program
N222375791 Park Assist Retrofit



		Assist Module, Setup/Configure Instrument Cluster		
XT4	With UD5 without UGN, UVZ, or UKL	Clear TLC Cache, Reprogram Parking Assist Module, Configure Parking Assist Module, Setup/Configure Instrument Cluster	9106540*	1.2
XT4	With UGN, UVZ, or UKL	Clear TLC Cache, Reprogram Parking Assist Module, Configure Parking Assist Module, Setup/Configure Instrument Cluster, Reprogram Active Safety Control Module	9106630*	1.4
Acadia	Without UGN, UVZ, or UKL	Clear TLC Cache, Reprogram Parking Assist Module, Configure Parking Assist Module, Setup/Configure Instrument Cluster	9106540*	1.6
Acadia	With UGN, UVZ, or UKL	Clear TLC Cache, Reprogram Parking Assist Module, Configure Parking Assist Module, Setup/Configure Instrument Cluster, Reprogram Active Safety Control Module	9106630*	1.8
Enclave	Without UGN, UVZ, or UKL	Clear TLC Cache, Reprogram Parking Assist Module, Configure Parking Assist Module, Setup/Configure Instrument Cluster	9106540*	2.6
Enclave	With UGN, UVZ, or UKL	Clear TLC Cache, Reprogram Parking Assist Module, Configure Parking Assist Module, Setup/Configure Instrument Cluster, Reprogram Active Safety Control Module	9106630*	2.8
Blazer	Without UGN, UVZ, or UKL	Clear TLC Cache, Reprogram Parking Assist Module, Configure Parking Assist Module,	9106540*	1.4

Customer Satisfaction Program

N222375791 Park Assist Retrofit



		Setup/Configure Instrument Cluster		
Blazer	With UGN, UVZ, or UKL	Clear TLC Cache, Reprogram Parking Assist Module, Configure Parking Assist Module, Setup/Configure Instrument Cluster, Reprogram Active Safety Control Module	9106630*	1.6
Colorado/Canyon	All Combinations	Clear TLC Cache, Reprogram Parking Assist Module, Configure Parking Assist Module, Setup/Configure Instrument Cluster	9106540*	0.9
Encore GX/Trailblazer	All Combinations	Clear TLC Cache, Reprogram Parking Assist Module, Configure Parking Assist Module, Setup/Configure Instrument Cluster	9106540*	1.1
Traverse	Without UGN, UVZ, or UKL	Clear TLC Cache, Reprogram Parking Assist Module, Configure Parking Assist Module, Setup/Configure Instrument Cluster	9106540*	2.0
Traverse	With UGN, UVZ, or UKL	Clear TLC Cache, Reprogram Parking Assist Module, Configure Parking Assist Module, Setup/Configure Instrument Cluster, Reprogram Active Safety Control Module	9106630*	2.2
Silverado/Sierra Regular Cab	Without UDD	Clear TLC Cache, Reprogram Parking Assist Module, Configure Parking Assist Module, Setup/Configure Instrument Cluster, Reprogram Body Control Module	9106640*	1.1
Silverado/Sierra Double Cab/Crew Cab	Without UDD	Clear TLC Cache, Reprogram Parking Assist Module, Configure Parking Assist Module, Setup/Configure	9106640*	1.3

Customer Satisfaction Program
N222375791 Park Assist Retrofit



		Instrument Cluster, Reprogram Body Control Module		
Silverado/Sierra Regular Cab	With UDD	Clear TLC Cache, Reprogram Parking Assist Module, Configure Parking Assist Module, Setup/Configure Instrument Cluster, Reprogram Body Control Module	9106640*	1.8
Silverado/Sierra Double Cab/Crew Cab	With UDD	Clear TLC Cache, Reprogram Parking Assist Module, Configure Parking Assist Module, Setup/Configure Instrument Cluster, Reprogram Body Control Module	9106640*	2.0

***Important: All Warranty codes are ZFAT and have NO Net Item.** To avoid warranty transaction rejections, carefully read and follow the instructions below:

Labour Time [\[Top\]](#)

Labour Operation Code:

Additional labour op code information:

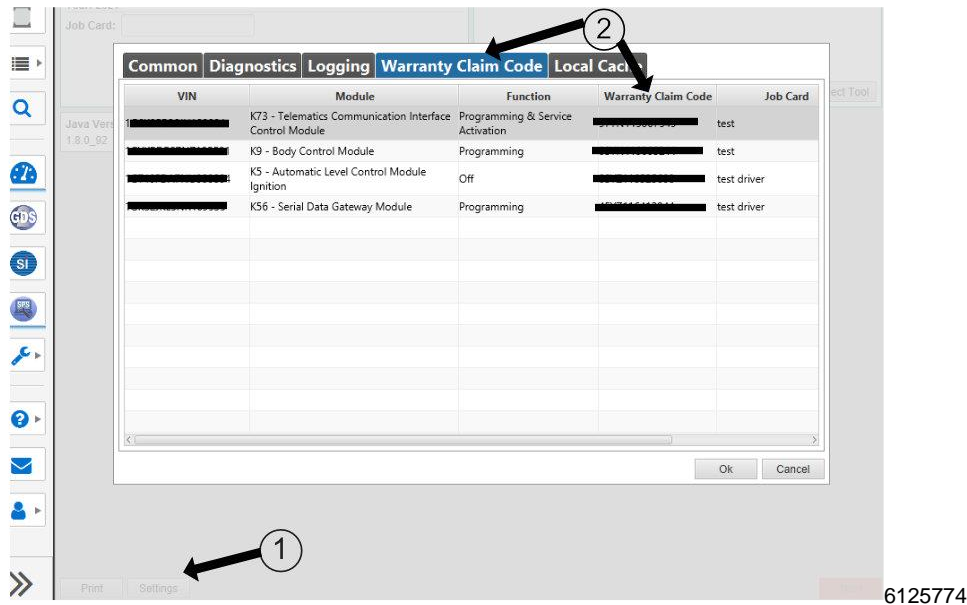
SPS Warranty Claim Code:

6125814

- The Warranty Claim Code from the programming event must be accurately entered in the “Warranty Claim Code” field of the transaction.
- When more than one Warranty Claim Code is generated for a programming event, it is required to document all Warranty Claim Codes in the “Correction” field on the job card. Dealers must also enter one of the codes in the “Warranty Claim Code” field of the transaction, otherwise the transaction will reject. It is best practice to enter the FINAL code provided by SPS2.



Warranty Claim Code Information Retrieval



If the Warranty Claim Code was not recorded on the Job Card, the code can be retrieved in the SPS2 system as follows:

1. Open TLC on the computer used to program the vehicle.
2. Select and start SPS2.
3. Select Settings (1).
4. Select the Warranty Claim Code tab (2).

The VIN, Warranty Claim Code and Date/Time will be listed on a roster of recent programming events. If the code is retrievable, dealers should resubmit the transaction making sure to include the code in the SPS Warranty Claim Code field.

Service Procedure

Caution: Before downloading the update files, be sure the computer is connected to the internet through a network cable (hardwired). DO NOT DOWNLOAD or install the files wirelessly. If there is an interruption during programming, programming failure or control module damage may occur.

Note: Carefully read and follow the instructions below.

- Ensure the programming tool is equipped with the latest software and is securely connected to the data link connector. If there is an interruption during programming, programming failure or control module damage may occur.
- Stable battery voltage is critical during programming. Any fluctuation, spiking, over voltage or loss of voltage will interrupt programming. Install a GM Authorized Programming Support Tool to maintain system voltage. Refer to www.gmdesolutions.com for further information. If not available, connect a fully charged 12V jumper or booster pack disconnected from the AC voltage supply. DO NOT connect a battery charger.
- Follow the on-screen prompts regarding ignition power mode, but ensure that anything that drains excessive power (exterior lights, HVAC blower motor, etc) is off.
- Clear DTCs after programming is complete. Clearing powertrain DTCs will set the Inspection/Maintenance (I/M) system status indicators to NO.

Important: The service technician always needs to verify that the VIN displayed in the TLC left side drop down menu and the top center window match the VIN plate of the vehicle to be programmed prior to using Service Programming System 2 (SPS2) for programming or reprogramming a module.

- For the TLC application, service technicians need to always ensure that the power mode (ignition) is "ON" before reading the VIN from the vehicle's VIN master module and that they do not select a VIN that is already in the TLC application memory from a previous vehicle.

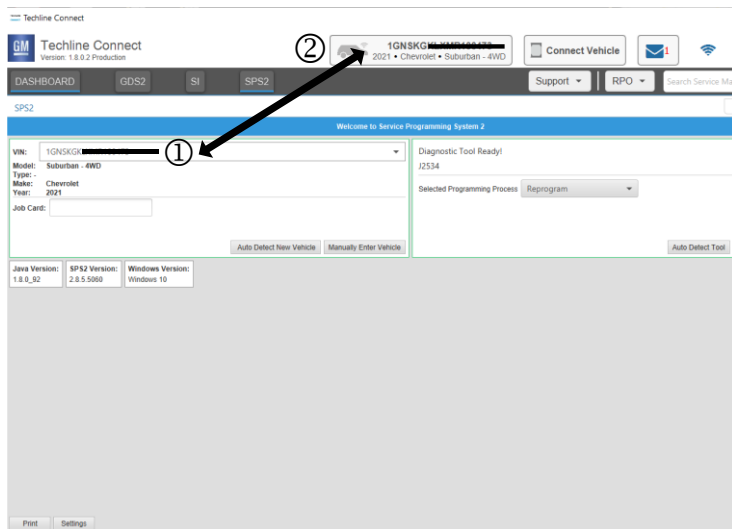
Customer Satisfaction Program

N222375791 Park Assist Retrofit



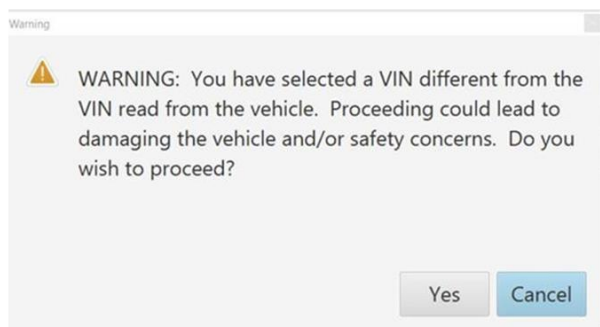
- If the VIN that shows up in the TLC top center window after correctly reading the VIN from the vehicle does not match the VIN plate of the vehicle, manually type in the VIN characters from the vehicle VIN plate into the TLC top center window and use these for programming or reprogramming the subject module with the correct vehicle VIN and software and/or calibrations.
- The Engine Control Module (ECM) is the master module (for VIP vehicles) that TLC reads to determine the VIN of the vehicle. If the VIN read from the vehicle by TLC does not match the VIN plate of the vehicle, the ECM also needs to be reprogrammed with the correct VIN, software and calibrations that match the vehicle's VIN plate.
- The Body Control Module (BCM) is the master module (for GEM vehicles) that TLC reads to determine the VIN of the vehicle. If the VIN read from the vehicle by TLC does not match the VIN plate of the vehicle, the BCM also needs to be reprogrammed with the correct VIN, software and calibrations that match the vehicle's VIN plate.

Caution: Be sure the VIN selected in the drop down menu (1) is the same as the vehicle connected (2) before beginning programming.



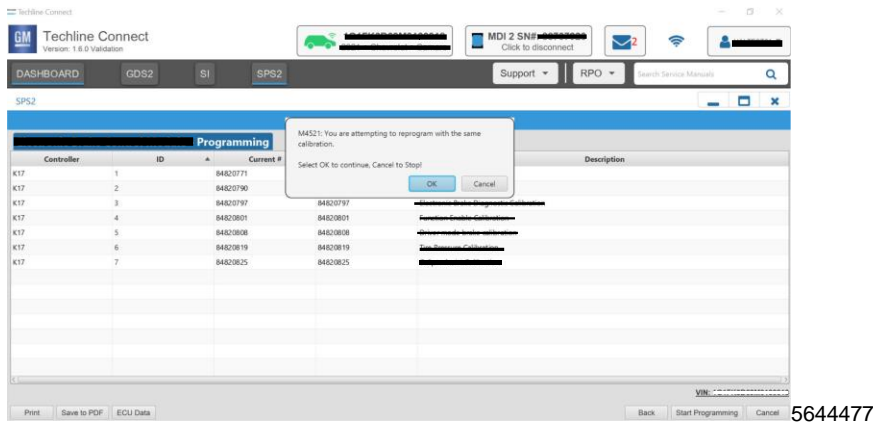
5743643

Important: If the vehicle VIN DOES NOT match, the message below will be shown.



5877000

Customer Satisfaction Program N222375791 Park Assist Retrofit

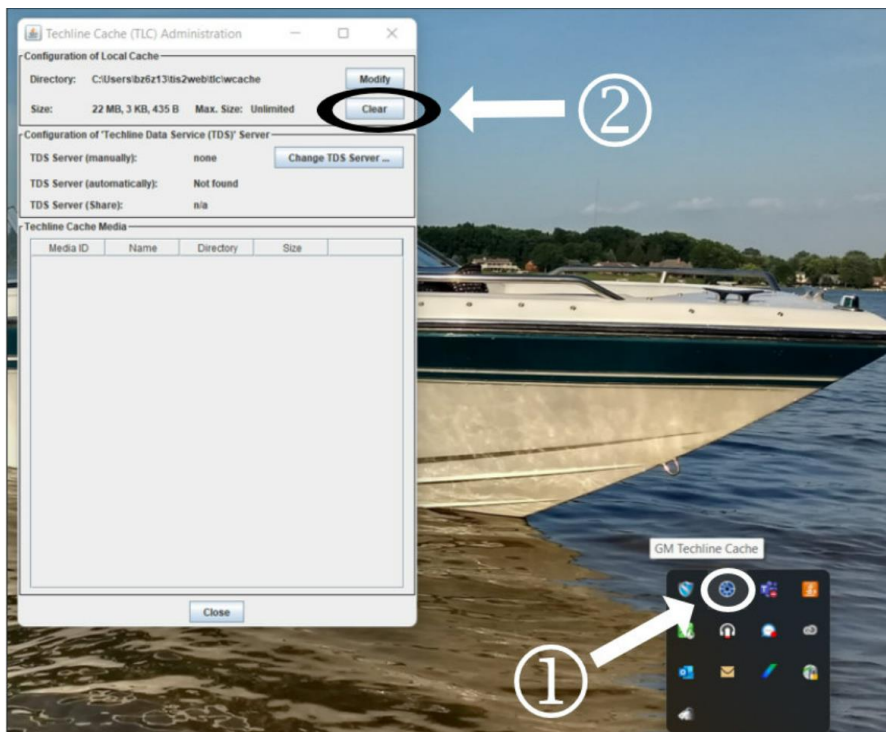


Important: Techline Connect screens shown above.

Important: If the same calibration/software warning is noted on the TLC Summary screen, select OK and follow screen instructions. After a successful programming event, the WCC is located in the Service Programming System dialogue box of the SPS Summary screen. No further action is required. Refer to the Warranty section of the bulletin.

Caution: It is vitally important that the procedure is completed by a properly trained technician and that the proper steps are followed for the vehicle make, model, and RPO combination. The parking assist system will not function properly if the proper procedure is not followed.

Note: After completing the section for your particular vehicle, you **MUST** complete the *Final Section* below to prevent both warranty claim rejections and repeat repairs.



6420694

1. Select the GM Techline Cache Icon (1) in the Task Menu.
2. Select "Clear" (2) in the pop up menu then close.



6288463

Note: The wiring harness for the Parking Assist Control Module may be wrapped around an adjacent wiring harness as shown above. Remove the attaching tape by unwrapping. Do NOT cut the tape as it could damage the wiring harness.

3. Using the VIN, determine vehicle make, model, and RPO combination. Refer to appropriate section below based upon vehicle content.

Customer Satisfaction Program

N222375791 Park Assist Retrofit



Camaro

1. Install the new Parking Assist Control Module. Refer to *Parking Assist Control Module Replacement* in SI.

Caution: When starting SPS2, select *Reprogram NOT Replace and Reprogram*.

2. Reprogram the Parking Assist Control Module. Refer to *K182 Parking Assist Control Module: Programming and Setup* in SI.
3. Perform setup and configuration on the Parking Assist Control Module. Refer to *K182 Parking Assist Control Module: Programming and Setup* in SI.

Note: This programming event is for “Setup and Configuration” only.

4. Perform setup and configuration on the Instrument Cluster. Refer to *P16 Instrument Cluster: Programming and Setup* in SI.

Note: The steps in the *Final Section* MUST be completed to help prevent warranty claim rejections and repeat repairs.

5. Proceed to the *Final Section*.

XT6

1. Install the new Parking Assist Control Module. Refer to *Parking Assist Control Module Replacement* in SI.

Caution: When starting SPS2, select *Reprogram NOT Replace and Reprogram*.

2. Reprogram the Parking Assist Control Module. Refer to *K182 Parking Assist Control Module: Programming and Setup* in SI.
3. Perform setup and configuration on the Parking Assist Control Module. Refer to *K182 Parking Assist Control Module: Programming and Setup* in SI.

Note: This programming event is for “Setup and Configuration” only.

4. Perform setup and configuration on the Instrument Cluster. Refer to *P16 Instrument Cluster: Programming and Setup* in SI.

Note: The steps in the *Final Section* MUST be completed to help prevent warranty claim rejections and repeat repairs.

5. Proceed to the *Final Section*.

XT5

1. Install the new Parking Assist Control Module. Refer to *Parking Assist Control Module Replacement* in SI.

Caution: When starting SPS2, select *Reprogram NOT Replace and Reprogram*.

2. Reprogram the Parking Assist Control Module. Refer to *K182 Parking Assist Control Module: Programming and Setup* in SI.
3. Perform setup and configuration on the Parking Assist Control Module. Refer to *K182 Parking Assist Control Module: Programming and Setup* in SI.

Note: This programming event is for “Setup and Configuration” only.

4. Perform setup and configuration on the Instrument Cluster. Refer to *P16 Instrument Cluster: Programming and Setup*.

Note: The steps in the *Final Section* MUST be completed to help prevent warranty claim rejections and repeat repairs.

5. Proceed to the *Final Section*.

XT4 WITH UD7

1. Install the new Parking Assist Control Module. Refer to *Parking Assist Control Module Replacement* in SI.

Caution: When starting SPS2, select *Reprogram NOT Replace and Reprogram*.

Customer Satisfaction Program

N222375791 Park Assist Retrofit



2. Reprogram the Parking Assist Control Module. Refer to *K182 Parking Assist Control Module: Programming and Setup* in SI.
3. Perform setup and configuration on the Parking Assist Control Module. Refer to *K182 Parking Assist Control Module: Programming and Setup* in SI.

Note: This programming event is for “Setup and Configuration” only.

4. Perform setup and configuration on the Instrument Cluster. Refer to *P16 Instrument Cluster: Programming and Setup*.

Note: The steps in the *Final Section* MUST be completed to help prevent warranty claim rejections and repeat repairs.

5. Proceed to the *Final Section*.

XT4 WITH UD5 WITHOUT UGN, UVZ, or UKL

1. Install the new Parking Assist Control Module. Refer to *Parking Assist Control Module Replacement* in SI.

Caution: When starting SPS2, select *Reprogram NOT Replace and Reprogram*.

2. Reprogram the Parking Assist Control Module. Refer to *K182 Parking Assist Control Module: Programming and Setup* in SI.
3. Perform setup and configuration on the Parking Assist Control Module. Refer to *K182 Parking Assist Control Module: Programming and Setup* in SI.

Note: This programming event is for “Setup and Configuration” only.

4. Perform setup and configuration on the Instrument Cluster. Refer to *P16 Instrument Cluster: Programming and Setup*.

Note: The steps in the *Final Section* MUST be completed to help prevent warranty claim rejections and repeat repairs.

5. Proceed to the *Final Section*.

XT4 WITH UD5 WITH UGN, UVZ, or UKL

1. Install the new Parking Assist Control Module. Refer to *Parking Assist Control Module Replacement* in SI.

Caution: When starting SPS2, select *Reprogram NOT Replace and Reprogram*.

2. Reprogram the Parking Assist Control Module. Refer to *K182 Parking Assist Control Module: Programming and Setup* in SI.
3. Perform setup and configuration on the Parking Assist Control Module. Refer to *K182 Parking Assist Control Module: Programming and Setup* in SI.

Note: This programming event is for “Setup and Configuration” only.

4. Perform setup and configuration on the Instrument Cluster. Refer to *P16 Instrument Cluster: Programming and Setup*.
5. Reprogram the Active Safety Control Module. Refer to *K124 Active Safety Control Module: Programming and Setup*.

Note: The steps in the *Final Section* MUST be completed to help prevent warranty claim rejections and repeat repairs.

6. Proceed to the *Final Section*.

Silverado/Sierra (Includes both 2022 and 2023 LDs and HDs)

1. Install the new Parking Assist Control Module. Refer to *Parking Assist Control Module Replacement* in SI.

Caution: When starting SPS2, select *Reprogram NOT Replace and Reprogram*.

Customer Satisfaction Program

N222375791 Park Assist Retrofit



2. Reprogram the Parking Assist Control Module. Refer to *K182 Parking Assist Control Module: Programming and Setup* in SI.
3. Perform configuration on the Parking Assist Control Module. Refer to *K182 Parking Assist Control Module: Programming and Setup* in SI.

Note: This programming event is for “Programming” only, it is not required to perform “Setup”.

4. Reprogram the Body Control Module. Refer to *K9 Body Control Module: Programming and Setup* in SI.

Note: This programming event is for “Programming and Configuration” only.

5. Perform program and configuration on the Instrument Cluster. Refer to *P16 Instrument Cluster: Programming and Setup* in SI.

Note: The steps in the *Final Section* MUST be completed to help prevent warranty claim rejections and repeat repairs.

6. Proceed to the *Final Section*.

Enclave WITH UGN, UVZ, or UKL

1. Install the new Parking Assist Control Module. Refer to *Parking Assist Control Module Replacement* in SI.

Caution: When starting SPS2, select *Reprogram NOT Replace and Reprogram*.

2. Reprogram the Parking Assist Control Module. Refer to *K182 Parking Assist Control Module: Programming and Setup* in SI.
3. Perform configuration on the Parking Assist Control Module. Refer to *K182 Parking Assist Control Module: Programming and Setup* in SI.

Note: This programming event is for “Setup and Configuration” only.

4. Perform setup and configuration on the Instrument Cluster. Refer to *P16 Instrument Cluster: Programming and Setup*.
5. Reprogram the Active Safety Control Module. Refer to *K124 Active Safety Control Module: Programming and Setup*.

Note: The steps in the *Final Section* MUST be completed to help prevent warranty claim rejections and repeat repairs.

6. Proceed to the *Final Section*.

Enclave WITHOUT UGN, UVZ, or UKL

1. Install the new Parking Assist Control Module. Refer to *Parking Assist Control Module Replacement* in SI.

Caution: When starting SPS2, select *Reprogram NOT Replace and Reprogram*.

2. Reprogram the Parking Assist Control Module. Refer to *K182 Parking Assist Control Module: Programming and Setup* in SI.
3. Perform configuration on the Parking Assist Control Module. Refer to *K182 Parking Assist Control Module: Programming and Setup* in SI.

Note: This programming event is for “Setup and Configuration” only.

4. Perform setup and configuration on the Instrument Cluster. Refer to *P16 Instrument Cluster: Programming and Setup*.

Note: The steps in the *Final Section* MUST be completed to help prevent warranty claim rejections and repeat repairs.

5. Proceed to the *Final Section*.

Customer Satisfaction Program

N222375791 Park Assist Retrofit



Acadia WITH UGN, UVZ, or UKL

1. Install the new Parking Assist Control Module. Refer to *Parking Assist Control Module Replacement* in SI.

Caution: When starting SPS2, select *Reprogram NOT Replace and Reprogram*.

2. Reprogram the Parking Assist Control Module. Refer to *K182 Parking Assist Control Module: Programming and Setup* in SI.
3. Perform configuration on the Parking Assist Control Module. Refer to *K182 Parking Assist Control Module: Programming and Setup* in SI.

Note: This programming event is for "Setup and Configuration" only.

4. Perform setup and configuration on the Instrument Cluster. Refer to *P16 Instrument Cluster: Programming and Setup*.
5. Reprogram the Active Safety Control Module. Refer to *K124 Active Safety Control Module: Programming and Setup*.

Note: The steps in the *Final Section* MUST be completed to help prevent warranty claim rejections and repeat repairs.

6. Proceed to the *Final Section*.

Acadia WITHOUT UGN, UVZ, or UKL

1. Install the new Parking Assist Control Module. Refer to *Parking Assist Control Module Replacement* in SI.

Caution: When starting SPS2, select *Reprogram NOT Replace and Reprogram*.

2. Reprogram the Parking Assist Control Module. Refer to *K182 Parking Assist Control Module: Programming and Setup* in SI.
3. Perform configuration on the Parking Assist Control Module. Refer to *K182 Parking Assist Control Module: Programming and Setup* in SI.

Note: This programming event is for "Setup and Configuration" only.

4. Perform setup and configuration on the Instrument Cluster. Refer to *P16 Instrument Cluster: Programming and Setup*.

Note: The steps in the *Final Section* MUST be completed to help prevent warranty claim rejections and repeat repairs.

5. Proceed to the *Final Section*.

Blazer WITH UGN, UVZ, or UKL

1. Install the new Parking Assist Control Module. Refer to *Parking Assist Control Module Replacement* in SI.

Caution: When starting SPS2, select *Reprogram NOT Replace and Reprogram*.

2. Reprogram the Parking Assist Control Module. Refer to *K182 Parking Assist Control Module: Programming and Setup* in SI.
3. Perform configuration on the Parking Assist Control Module. Refer to *K182 Parking Assist Control Module: Programming and Setup* in SI.

Note: This programming event is for "Setup and Configuration" only.

4. Perform setup and configuration on the Instrument Cluster. Refer to *P16 Instrument Cluster: Programming and Setup*.
5. Reprogram the Active Safety Control Module. Refer to *K124 Active Safety Control Module: Programming and Setup*.

Customer Satisfaction Program

N222375791 Park Assist Retrofit



Note: The steps in the *Final Section* MUST be completed to help prevent warranty claim rejections and repeat repairs.

6. Proceed to the *Final Section*.

Blazer WITHOUT UGN, UVZ, or UKL

1. Install the new Parking Assist Control Module. Refer to *Parking Assist Control Module Replacement* in SI.

Caution: When starting SPS2, select *Reprogram NOT Replace and Reprogram*.

2. Reprogram the Parking Assist Control Module. Refer to *K182 Parking Assist Control Module: Programming and Setup* in SI.
3. Perform configuration on the Parking Assist Control Module. Refer to *K182 Parking Assist Control Module: Programming and Setup* in SI.

Note: This programming event is for "Setup and Configuration" only.

4. Perform setup and configuration on the Instrument Cluster. Refer to *P16 Instrument Cluster: Programming and Setup*.

Note: The steps in the *Final Section* MUST be completed to help prevent warranty claim rejections and repeat repairs.

5. Proceed to the *Final Section*.

Colorado/Canyon

1. Install the new Parking Assist Control Module. Refer to *Parking Assist Control Module Replacement* in SI.

Caution: When starting SPS2, select *Reprogram NOT Replace and Reprogram*.

2. Reprogram the Parking Assist Control Module. Refer to *K182 Parking Assist Control Module: Programming and Setup* in SI.
3. Perform setup and configuration on the Parking Assist Control Module. Refer to *K182 Parking Assist Control Module: Programming and Setup* in SI.

Note: This programming event is for "Setup and Configuration" only.

4. Perform setup and configuration on the Instrument Cluster. Refer to *P16 Instrument Cluster: Programming and Setup* in SI.

Note: The steps in the *Final Section* MUST be completed to help prevent warranty claim rejections and repeat repairs.

5. Proceed to the *Final Section*.

Encore GX/Trailblazer

1. Install the new Parking Assist Control Module. Refer to *Parking Assist Control Module Replacement* in SI.

Caution: When starting SPS2, select *Reprogram NOT Replace and Reprogram*.

2. Reprogram the Parking Assist Control Module. Refer to *K182 Parking Assist Control Module: Programming and Setup* in SI.
3. Perform setup and configuration on the Parking Assist Control Module. Refer to *K182 Parking Assist Control Module: Programming and Setup* in SI.

Note: This programming event is for "Setup and Configuration" only.

4. Perform setup and configuration on the Instrument Cluster. Refer to *P16 Instrument Cluster: Programming and Setup* in SI.

Note: The steps in the *Final Section* MUST be completed to help prevent warranty claim rejections and repeat repairs.

5. Proceed to the *Final Section*.

Customer Satisfaction Program

N222375791 Park Assist Retrofit



Traverse WITHOUT UGN, UVZ, or UKL

1. Install the new Parking Assist Control Module. Refer to *Parking Assist Control Module Replacement* in SI.

Caution: When starting SPS2, select *Reprogram NOT Replace and Reprogram*.

2. Reprogram the Parking Assist Control Module. Refer to *K182 Parking Assist Control Module: Programming and Setup* in SI.
3. Perform configuration on the Parking Assist Control Module. Refer to *K182 Parking Assist Control Module: Programming and Setup* in SI.

Note: This programming event is for "Setup and Configuration" only.

4. Perform setup and configuration on the Instrument Cluster. Refer to *P16 Instrument Cluster: Programming and Setup in SI*.

Note: The steps in the *Final Section* MUST be completed to help prevent warranty claim rejections and repeat repairs.

5. Proceed to the *Final Section*.

Traverse WITH UGN, UVZ, or UKL

1. Install the new Parking Assist Control Module. Refer to *Parking Assist Control Module Replacement* in SI.

Caution: When starting SPS2, select *Reprogram NOT Replace and Reprogram*.

2. Reprogram the Parking Assist Control Module. Refer to *K182 Parking Assist Control Module: Programming and Setup* in SI.
3. Perform configuration on the Parking Assist Control Module. Refer to *K182 Parking Assist Control Module: Programming and Setup* in SI.

Note: This programming event is for "Setup and Configuration" only.

4. Perform setup and configuration on the Instrument Cluster. Refer to *P16 Instrument Cluster: Programming and Setup*.
5. Reprogram the Active Safety Control Module. Refer to *K124 Active Safety Control Module: Programming and Setup*.

Note: The steps in the *Final Section* MUST be completed to help prevent warranty claim rejections and repeat repairs.

6. Proceed to the *Final Section*.

Final Section



5644478

Note: The screenshot above is an example of module programming and may not be indicative of the specific module that is being programmed. Module selection and VIN information have been blacked out.

Customer Satisfaction Program

N222375791 Park Assist Retrofit



Important: To avoid warranty transaction rejections, you **MUST** record the warranty claim code provided on the Warranty Claim Code (WCC) screen shown above on the job card. Refer to callout 1 above for the location of the WCC on the screen.

1. Record SPS Warranty Claim Code on job card for warranty transaction submission.
2. Clear all DTCs.

Note: Depending upon vehicle RPO, it may be equipped with both front and rear parking assist or just rear park assist.

3. Verify parking assist is now active on vehicle.

Dealer Responsibility

All new, used, GM Certified Used, courtesy transportation vehicles, dealer shuttle vehicles, etc. in dealers' possession and subject to this program must be held and inspected/repared per the service procedure of this bulletin before customers take possession of these vehicles. Involved vehicles must be held and not delivered to customers, dealer-traded, released to auction, used for demonstration, or any other purpose.

All GM Certified Used vehicles currently in the dealers' inventory within the Certified Pre-Owned Inventory System (CPOIS) will be de-certified and must be held and remedied per the service procedure in this bulletin. Upon submitting an accepted/paid warranty transaction in the Global Warranty Management (GWM) system, the vehicle can be re-certified for sale within the CPOIS system, or once again be used in the CTP program.

Dealers are to service all vehicles subject to this program at no charge to customers, regardless of mileage, age of vehicle, or ownership, through September 30, 2026. Customers who have recently purchased vehicles sold from your vehicle inventory, and for which there is no customer information indicated on the involved vehicle listing, are to be contacted by the dealer. Arrangements are to be made to make the required correction according to the instructions contained in this bulletin. A copy of the customer letter is provided in this bulletin for your use in contacting customers. Program follow-up cards should not be used for this purpose, since the customer may not as yet have received the notification letter.

In summary, whenever a vehicle subject to this program enters your vehicle inventory or is in your facility for service through September 30, 2026, you must take the steps necessary to be sure the program correction has been made before selling or releasing the vehicle.

Dealer Reports – For USA & Export

For dealers with involved vehicles, a listing has been prepared and will be available through GM GlobalConnect Maxis Field Action Reports or sent directly to export dealers. The Inventory tab of the dealer reports will contain VINs that apply to this field action. This information is intended to assist dealers with the **PROMPT COMPLETION** of these vehicles. The Customer In-Service tab will contain customer names and addresses from Motor Vehicle Registration Records. The use of such motor vehicle registration data for any purpose other than follow-up necessary to complete this field action may be a violation of law in several states.

Courtesy Transportation – For USA & Canada

Courtesy transportation is available for customers whose vehicles are involved in a product program and still within the warranty coverage period. See General Motors Service Policies and Procedures Manual for courtesy transportation program details.

Customer Notification

USA & Canada - General Motors will notify customers of this program on their vehicle (see copy of customer letter included with this bulletin).

Export - Letters will be sent to known owners of record located within areas covered by the US National Traffic and Motor Vehicle Safety Act. For owners outside these areas, dealers should notify customers using the attached sample letter.

GM bulletins are intended for use by professional technicians, NOT a "do-it-yourselfer". They are written to inform these technicians of conditions that may occur on some vehicles, or to provide information that could assist in the proper service of a vehicle. Properly trained technicians have the tools, equipment, safety instructions, and know-how to do a job properly and safely. If a condition is described, **DO NOT** assume that the bulletin applies to your vehicle, or that your vehicle will have that condition. See your dealer for information on whether your vehicle may benefit from the information.



**We Support
Voluntary Technician
Certification**

Customer Satisfaction Program

N222375791 Park Assist Retrofit



This notice applies to your vehicle, **VIN:** _____

Dear General Motors Customer:

Our records indicate that, at the time you purchased or leased your GM vehicle, the vehicle was not equipped with Rear or Front and Rear Park Assist due to an industry-wide parts shortage.

We are pleased to inform you that you are now able to schedule an appointment with your GM dealer so they can enable your Rear or Front and Rear Park Assist feature.

What We Will Do: Your GM dealer will install the required parts and software in your vehicle to enable your Rear or Front and Rear Park Assist feature. This service will be performed for you at **no charge until September 30, 2026.**

What You Should Do: We recommend that you contact your GM dealer as soon as possible to schedule an appointment for this retrofit. By scheduling an appointment, your dealer can order the necessary parts to be available on your scheduled appointment date.

If you have any questions or concerns that your dealer is unable to resolve, please contact the appropriate Customer Assistance Center at the number listed below.

For the hearing or speech impaired, please contact our Customer Assistance Center using the Telecommunication Relay Service by dialing 711 then providing the appropriate Customer Assistance Center number for your vehicle.

Division	Number	Text Telephones (TTY)
Cadillac	1-800-333-4223	711 / 1-800-833-2438
Chevrolet	1-800-222-1020	711 / 1-800-833-2438
GMC	1-800-462-8782	711 / 1-800-833-2438
Puerto Rico – English	1-866-467-9700	
Puerto Rico – Español	1-866-467-9700	
Virgin Islands	1-866-467-9700	

We truly appreciate you taking the time to retrofit your vehicle as we know your time is valuable. We want you to know that we will do our best, throughout your ownership experience, to ensure that your GM vehicle provides you with many miles of enjoyable driving.

Neelie O'Connor
Global Executive Director
Customer Experience Operations

N222375791