

- ATTENTION:**
- GENERAL MANAGER
 - PARTS MANAGER
 - CLAIMS PERSONNEL
 - SERVICE MANAGER

IMPORTANT - All Service Personnel Should Read and Initial in the boxes provided, right.

© 2023 Subaru of America, Inc. All rights reserved.



QUALITY DRIVEN® SERVICE

SERVICE BULLETIN

APPLICABILITY: 2020-23MY Outback & Legacy With 2.4L DIT
2019-23MY Ascent

NUMBER: 09-106-23R

DATE: 07/11/23

SUBJECT: Exhaust Pipe Front (EPF) Design Change

REVISED: 08/24/23

INTRODUCTION:

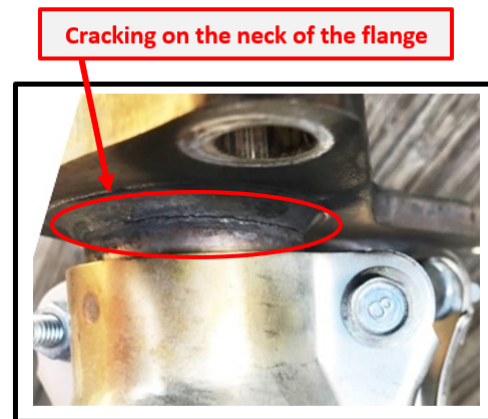
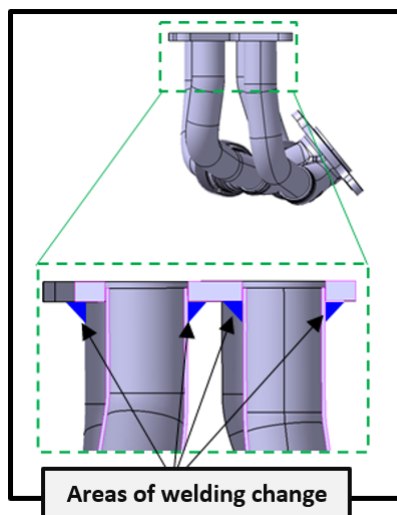
This bulletin announces design changes made to the Exhaust Pipe Front (EPF) to address concerns of rattle-type or fluttering sounds coming from the undercarriage during acceleration caused by cracking in the EPF. A welding material with enhanced durability has been incorporated into the production of the EPF. If the condition described is confirmed, the EPF should be inspected and if determined necessary, replaced.

PRODUCTION CHANGE INFORMATION:

The new EPF has been incorporated into vehicle production as per the table below.

Model	Starting VIN
Legacy	P3008074
Outback	P3154038
Ascent	P3409668

DESCRIPTION OF DESIGN CHANGE:



CAUTION: VEHICLE SERVICING PERFORMED BY UNTRAINED PERSONS COULD RESULT IN SERIOUS INJURY TO THOSE PERSONS OR TO OTHERS.

Subaru Service Bulletins are intended for use by professional technicians ONLY. They are written to inform those technicians of conditions that may occur in some vehicles, or to provide information that could assist in the proper servicing of the vehicle. Properly trained technicians have the equipment, tools, safety instructions, and know-how to do the job correctly and safely. If a condition is described, DO NOT assume that this Service Bulletin applies to your vehicle, or that your vehicle will have that condition.

Subaru of America, Inc. is ISO 14001 Compliant

ISO 14001 is the international standard for excellence in Environmental Management Systems. Please recycle or dispose of automotive products in a manner that is friendly to our environment and in accordance with all local, state and federal laws and regulations.

Continued...

PART INFORMATION:

REMINDER: Always order the most up-to-date replacement parts based on the specific VIN being repaired.

Part Description	Part Number	Quantity
EXHAUST PIPE ASSEMBLY-FRONT	44610AC61B	1
FLANGE BOLT	010106160	As Needed
FLANGE NUT	023806000	As Needed
GSKT EXH PIPE R	44011AG000	1
GASKET UNON BANJO	17556AA000	1
GSKT-EXH MANIF	14038AA050	2
GASKET CR	44022AA123	1
NUT	902350001	6
GASKET-EXHAUST	44616AA310	1
GASKET-EXHAUST	44616AA320	1

NOTE: The parts listed above in gray are **one-time** use only.

SERVICE PROCEDURE / INFORMATION:

REMINDER: Customer satisfaction and retention starts with performing quality repairs.

The service procedures for front exhaust pipe replacement remain unchanged. Always refer to the applicable Service Manual and review the full requirements of the repair being performed. The Service Manual procedures contain information critical to performing an effective repair the first time, every time. This includes but is not limited to important SAFETY precautions, proper inspection criteria, necessary special tools, required processes and related one-time-use parts needed for a complete and lasting repair.

Refer to the applicable Subaru Service Manual: Engine > EXHAUST > Front Exhaust Pipe

NOTES:

- The Service Manual uses a black star (★) in the component breakdown illustration to indicate one-time use parts.
- Refer to the applicable Service Manual and review: General Description > Repair Contents > Action required before & after Battery Disconnect. Additionally, record any stored seat position(s) before proceeding. Relearn any seat position memory after work is complete. If the power rear gate (PRG) height has been customized, that position must also be noted and relearned.
- Whenever reconnecting the ground cable terminal to the battery sensor, torque to 7.5Nm (5.5ft.-lbs. or 66inch.-lbs.) while supporting the sensor with the other hand as outlined in the applicable Service Manual under: STARTING/CHARGING SYSTEMS > Battery Sensor.

Continued...

WARRANTY / CLAIM INFORMATION:

For vehicles within **Powertrain Warranty**, and SAS Gold Coverage, this repair may be submitted using the following claim information.

Labor Description	Labor Operation #	Labor Time	Fail Code
TURBO INLET GASKET &/or PIPE R&R	B249-111	1.6	EBS-02
EXHAUST SYSTEM NOISE/LEAK TEST	G229-001	0.2	

IMPORTANT REMINDERS:

- SOA strongly discourages the printing and/or local storage of service information as previously released information and electronic publications may be updated at any time.
- Always check for any open recalls or campaigns anytime a vehicle is in for servicing.
- Always refer to STIS for the latest service information before performing any repairs.