

## Front Brake Pads Wearing Unevenly

### AFFECTED VEHICLES

Year	Model	Trim Level
2022	MDX	ALL

**EDITOR'S NOTE:** This article revises the previous version posted in July 2023.

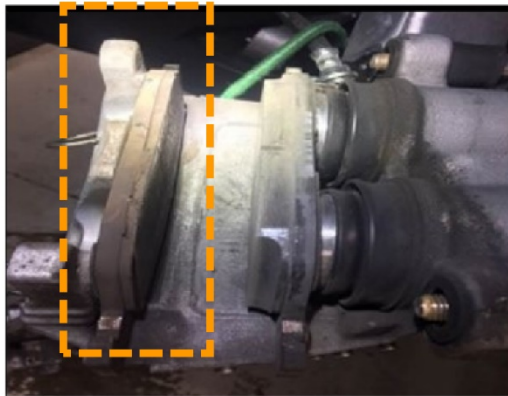
Warranty Parts Inspection (WPI) tested several returned calipers that were replaced due to finding uneven brake pad wear. Dealerships are finding this uneven wear during vehicle inspections and/or if a customer complains of brake noise, vibration, or other brake-related concerns.

It was determined that the calipers are not the cause of the brake pads wearing unevenly, and therefore, they should not be replaced if uneven brake wear is found. Uneven wear has been observed on the inner and outer pads for Brembo calipers and only the outer pads for Continental calipers.

**INNER PAD UNEVEN WEAR  
EXAMPLE - BREMBO**



**OUTER PAD UNEVEN WEAR  
EXAMPLE - CONTINENTAL**



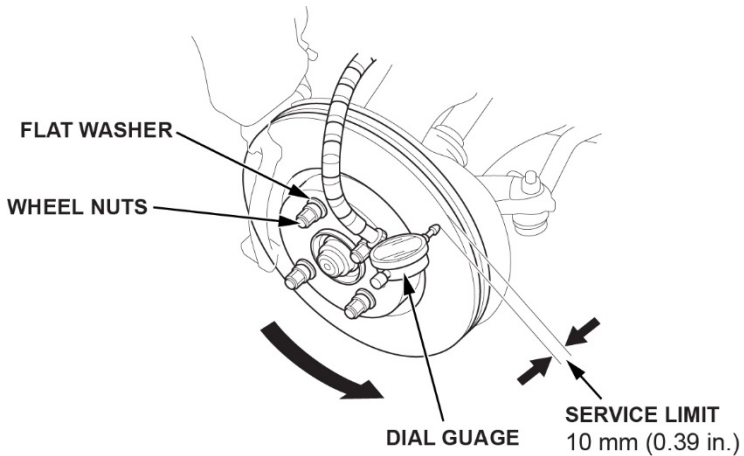
### What should we do when we find uneven brake wear?

It is recommended to replace the front pad set. Additionally, the brake rotor should be visually inspected and measured for thickness, parallelism, and runout. Replace the rotors if specifications are not met. **Do not replace the calipers.**

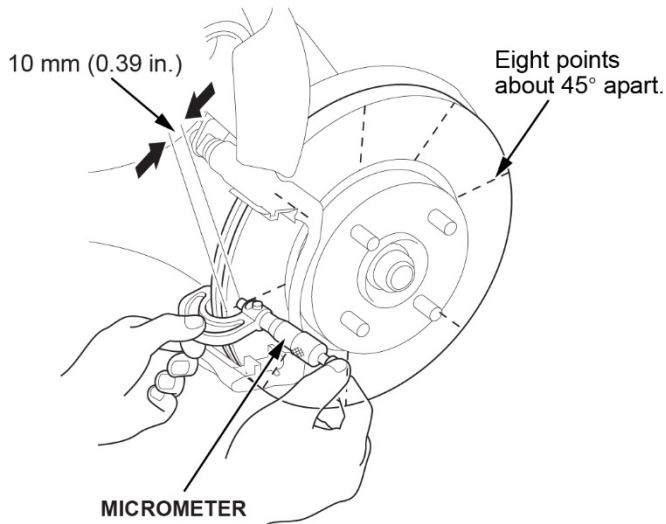
1. Inspect the brake rotors for significant wear on the friction surface.



- If the inner and outer edges of the rotors are raised, indicating significant wear, replace the brake rotors.
  - If the inner and outer edges of the rotors are not raised, go to step 2.
2. Clean the brake rotor thoroughly and remove all rust.
  3. Install suitable flat washers and wheel nuts.
  4. Tighten the wheel nuts to the specified torque to hold the brake rotor securely against the hub.
  5. Measure the brake rotor runout. If the runout is within spec, proceed to step 6.
  6. If runout is not within spec, replace brake rotors.



7. Measure the brake rotor thickness. If the thickness is not within spec at any of the eight points measured, replace brake rotor. If thickness is within spec at the eight points measured, rotors are deemed good.



### Specifications

Item	Standard Value (New)	Service Limit
Brake Rotor Thickness	30.0 mm (1.181 in)	28.0 mm (1.102 in)
Brake Rotor Parallelism*	-	0.015 mm (0.00059 in) max

\*This is the maximum allowable difference between the thickness measurement points.