

Whine Noise from Rear of Vehicle

Service
Category Drivetrain

Market USA and
Mexico

Section Axle/Differential

Toyota Supports
ASE Certification 

Applicability

YEAR(S)	MODEL(S)	ADDITIONAL INFORMATION
2019 - 2023	Tacoma	Body Type(s): Double Cab

Introduction

Some 2019 – 2023 model year Tacoma Double Cab vehicles may exhibit a whine noise from the rear of the vehicle. This condition may occur while driving around 50 mph (80 kph) at constant speed, slight acceleration, or slight deceleration. This condition may be caused by rear differential vibration transferring through the chassis and body. Follow the Repair Procedure in this bulletin to address this condition.

Whine Noise from Rear of Vehicle

Table of Contents

- [Warranty](#) 3
 - [For USA Market](#) 3
 - [For Mexico Market](#) 3
- [Parts Information](#)..... 3
 - [For USA and Mexico Markets](#)..... 3
- [Repair Procedure](#)..... 4

Whine Noise from Rear of Vehicle

Warranty Information

For USA Market

OP CODE	DESCRIPTION	TIME	OFP	T1	T2
BD2302	Install Pad and Dynamic Damper	1.0	51229-04010	91	99

APPLICABLE WARRANTY

- This repair is covered under the Toyota Basic Warranty. This warranty is in effect for 36 months or 36,000 miles, whichever occurs first, from the vehicle's in-service date.
- Warranty application is limited to occurrence of the specified condition described in this bulletin.

For Mexico Market

OP CODE	DESCRIPTION	TIME	OFP	T1	T2
BD2302	Install Pad and Dynamic Damper	1.0	51229-04010	91	99

APPLICABLE WARRANTY

- This repair is covered under the Toyota Basic Warranty. This warranty is in effect for 36 months or 60,000 kilometers, whichever occurs first, from the vehicle's in-service date.
- Warranty application is limited to occurrence of the specified condition described in this bulletin.

Parts Information

For USA and Mexico Markets

PART NUMBER	PART NAME	QTY
51229-04010	Damper, Frame Dynamic	2
52216-04010	Stopper, Cab Mounting Cushion	2
62555-04070	Pad, Pillar, No. 5	2

Whine Noise from Rear of Vehicle

Repair Procedure

1. Confirm the condition exists.

Does the vehicle exhibit a whine noise from the rear of the vehicle while driving around 50 mph (80 kph) at constant speed, slight acceleration, or slight deceleration?

- **YES** — Continue to step 2.
- **NO** — This bulletin does NOT apply. Continue diagnosis using the applicable Repair Manual.

2. Install the No. 5 pillar pad to the C pillar.

A. Fold down the seat and seat back for adequate space during the repair.

B. Remove the right-hand and left-hand luggage compartment side tray, rear door scuff plate, rear door weatherstrip, and the quarter trim lower panel.

Refer to TIS, applicable model and model year Repair Manual:

- [2019](#) / [2020 – 2023](#) Tacoma:
Vehicle Interior – Interior Panels/Trim
– “Interior: Roof Headlining (for Double Cab): Removal”

C. Remove the rear seat outer belt assembly.

Refer to TIS, applicable model and model year Repair Manual:

- [2019 – 2023](#) Tacoma:
Vehicle Interior – Seat Belt – “Seat Belt: Rear Seat Outer Belt Assembly (for Double Cab): Removal”

Figure 1.



Whine Noise from Rear of Vehicle

Repair Procedure (continued)

- D. Install the No. 5 pillar pad on the bottom of the C pillar to the right-hand and left-hand sides.

NOTE

Hold the belt with tape to prevent the belt from retracting.

Figure 2. Installation Area



Figure 3. No. 5 Pillar Pad Installed



- E. Reinstall ALL components.

Refer to TIS, applicable model and model year Repair Manual:

- [2019 / 2020 – 2023](#) Tacoma:
Vehicle Interior – Interior Panels/Trim – “Interior Roof Headlining (for Double Cab): Installation”
- [2019 – 2023](#) Tacoma:
Vehicle Interior – Seat Belt – “Seat Belt: Rear Seat Outer Belt Assembly (for Double Cab): Installation”

Whine Noise from Rear of Vehicle

Repair Procedure (continued)

F. Torque the seat belt bolts.

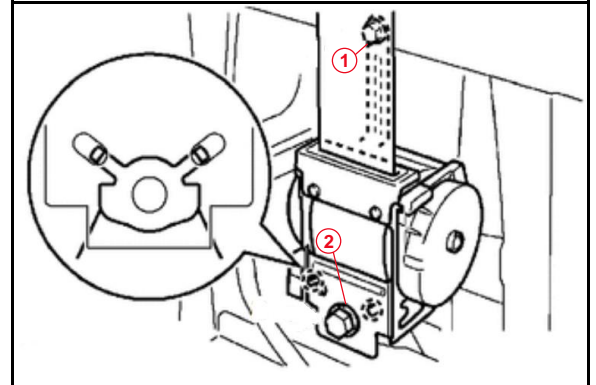
Bolt A

Torque: 12.5 N*m (127 kgf*cm, 9 ft*lbf)

Bolt B

Torque: 42 N*m (428 kgf*cm, 31 ft*lbf)

Figure 4.



1	Bolt A
2	Bolt B

3. Install the frame dynamic damper.

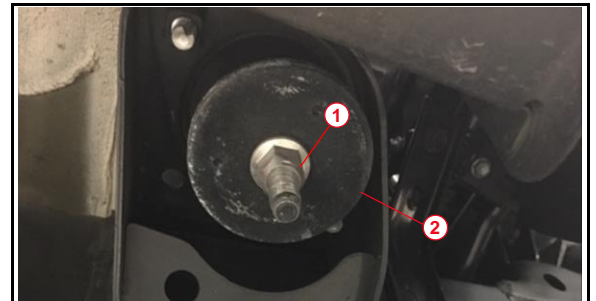
A. Remove the No. 3 cab mount nut (17 mm) and left-hand and right-hand cab mounting cushion stopper.

Figure 5.



1	No. 3 Cab Mount
----------	------------------------

Figure 6.



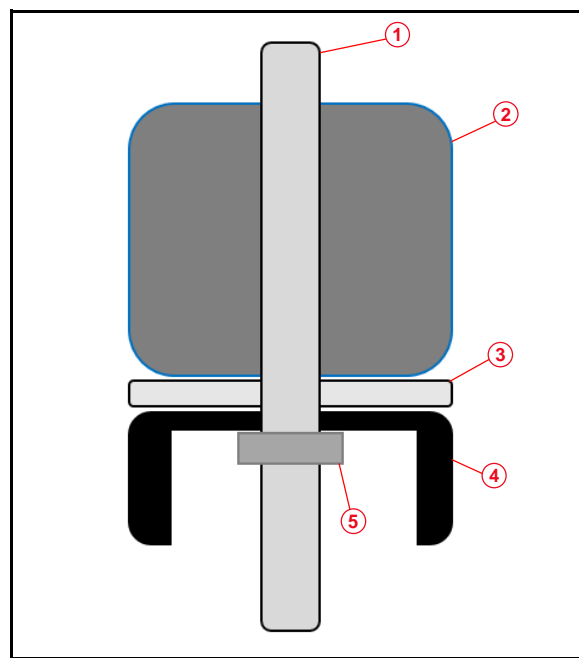
1	No. 3 Cab Mount Nut
2	Cab Mounting Cushion Stopper

Whine Noise from Rear of Vehicle

Repair Procedure (continued)

- B. Install the NEW cab mounting cushion stopper and the NEW frame dynamic damper to the right-hand and left-hand cab mount.
- C. Retighten the cab mount nut.
Torque: 45 N*m (459 kgf*cm, 33 ft*lbf)

Figure 7.



1	Body Mounting Bolt
2	No. 3 Cushion Sub-assy Cab Mounting
3	Cab Mounting Cushion Stopper
4	Frame Dynamic Damper
5	Lock Nut

- 4. Test-drive the vehicle to confirm the condition is addressed.