



## STAR ONLINE PUBLICATION



**Case Number: S2325000006**

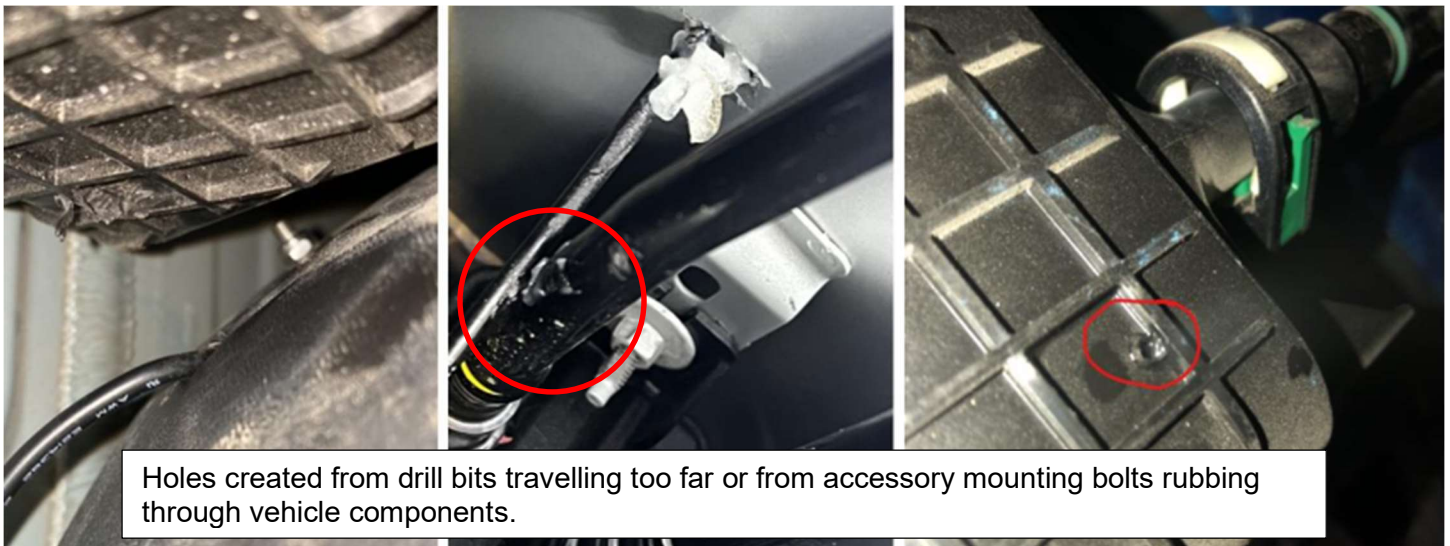
**Release Date: June 2023**

**Symptom/Vehicle Issue:** Customer complaint may include a MIL-on or check engine lamp on condition.

**Customer Complaint/Technician Observation:** Upon further inspection, fault code(s) P0456-SMALL LEAK DETECTED and/or P0455-LARGE LEAK DETECTED may be set in the PCM (Powertrain Control Module).

**Discussion:** If the fault code(s) P0456 and/or P0455 are set in the PCM and it fails the Small Leak Verification Test (SLVT), check for aftermarket accessories and equipment where the installation may have caused damage to vehicle components.

See a examples below:



This document does not authorize warranty repairs. This communication documents a record of past experiences. STAR Online does not provide any conclusions about what is wrong with the vehicle. Rather, it captures all previous cases known that appear to be similar or related to the vehicle symptom / condition. You are the expert, and you are responsible for deciding on the appropriate course of action.

**Contact STAR Center, or your Technical Assistance Center Via TechCONNECT or eCONTACT ticket if no solution is found**



## STAR ONLINE PUBLICATION



Popular aftermarket modification where rear parking brake cables are re-routed but unfortunately may apply excessive force against vapor lines causing plastic endform to break on purge expansion tube.

If nothing abnormal is found, continue with normal published diagnostics for the appropriate fault codes.

This document does not authorize warranty repairs. This communication documents a record of past experiences. STAR Online does not provide any conclusions about what is wrong with the vehicle. Rather, it captures all previous cases known that appear to be similar or related to the vehicle symptom / condition. You are the expert, and you are responsible for deciding on the appropriate course of action.

**Contact STAR Center, or your Technical Assistance Center Via TechCONNECT or eCONTACT ticket if no solution is found**