 <b>Tesla, Inc.</b> Service Bulletin		<h1 style="margin: 0;">Inspect Center Console Décor Lid Latch Pin</h1>	
<b>SB-21-15-006</b> June 16, 2023		<b>R1</b>	
<b>Classification</b> Repair Bulletin		<b>Section/Group</b> 15 - Interior Trim	<b>Mobile Service</b> Can Perform (where permitted)
<b>Model Year</b> 2021	<b>Model</b> Model S	<b>Country/Region</b> United States	<b>Version</b> All
<small>The model(s) and model year(s) listed are a general approximation of the affected VIN list. Refer to the VIN/Bulletin Tracker or Customer/Vehicle profile to determine applicability of this bulletin for a particular vehicle.</small>			

Repair Bulletin: This repair bulletin provides instructions on addressing a noted condition or possible customer concern regarding the operation of Tesla vehicles. These instructions should only be performed by trained professionals.

*This Service Document supersedes SB-21-15-006, dated September 11, 2021. This new revision, R1, adds a correction code and additional photos to clarify the procedure. Each content change is marked by a vertical line in the left margin. Discard the previous version and replace it with this one.*

## Condition

Some Model S Palladium vehicles were manufactured with center console décor lid latch pins too short to reliably secure the décor lid open.

## Correction

Upon customer complaint of a center console décor lid that does not stay open, inspect the vehicle for symptoms related to the condition. If symptoms are present, either replace the latch pin, replace the center console décor, or replace both the center console décor and latch pin, as necessary.

Correction Description	Correction	Time
SB-21-15-006 Not Applicable	S012115006	0.00
Inspect Decor Lid Latch Pin; Replace Latch Pin	S022115006	0.42
Inspect Decor Lid Latch Pin; Replace Center Console Décor and Latch Pin	S032115006	0.54
Inspect Decor Lid Latch Pin; Replace Center Console Décor	S042115005	0.48

Part Number	Description	Quantity
<b>Parts If Necessary</b> 1613372-00-C	CONSOLE, PUSH PUSH, LATCH PIN	1
	<b>And/Or one of the following:</b>	
1564416-01-A	CONSOLE, DECOR, WALNUT, ASY	1
1564416-02-A	CONSOLE, DECOR, EBONY, ASY	1
1564416-04-A	SX, CONSOLE, DECOR, ASY, VRNT, TW	1

These part numbers were current at the time of publication. Use the revisions listed or later, unless otherwise specified in the [Parts Catalog](#).

## Procedure

- Verify the operation of the center console décor lid:
  - The lid stays open – Discontinue this procedure. Delete the activity from the Service Visit, on the condition that this issue might present itself again in the future. Do not use any correction code. Inform the customer that operation of the lid is push open, push close.
  - The lid does not stay open – Continue to the next step.

2. Remove the center console (refer to Service Manual procedure [15192402](#)).
3. Use a flashlight to look into the serrated gap of the décor lid to determine the condition of the tang over the décor lid latch pin and if the latch pin is present (Figure 1).
  - If the tang is present and secure, but the latch pin is missing (Figure 2), install an updated latch pin. Skip to step 9.
  - If the tang is present and secure, and the latch pin is present (Figure 3), replace the latch pin with an updated component. Skip to step 6.
  - If the tang is broken off or damaged in any way (Figure 4), regardless if the latch pin is present, continue to step 4.

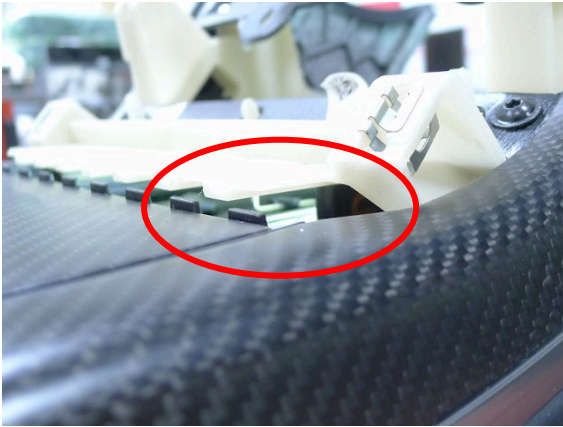


Figure 1 – Look into serrated gap here

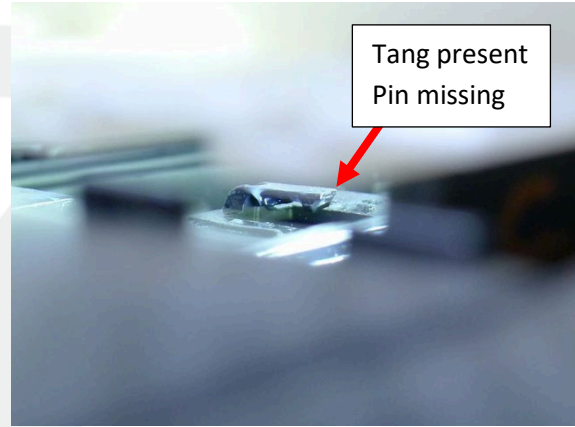


Figure 2 – Tang is present and secure, latch pin missing – Go to Step 9

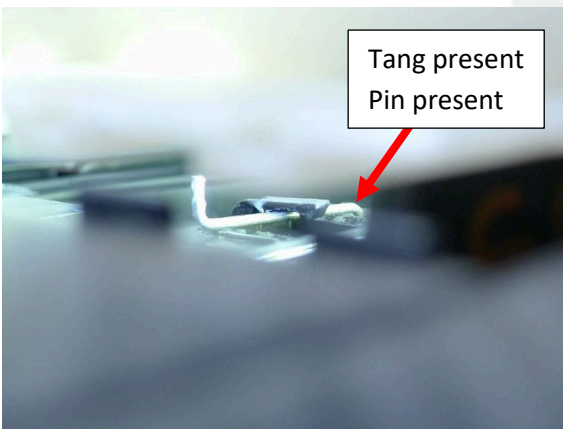


Figure 3 – Tang is present and secure, latch pin present – Go to Step 6

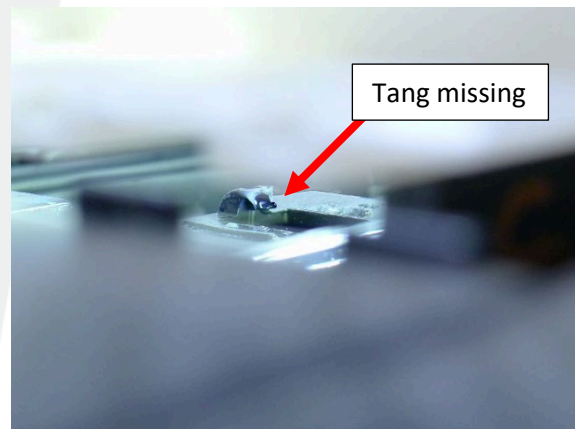


Figure 4 – Tang is broken off – Go to Step 4

4. Replace the center console décor on the center console (refer to Service Manual procedure [15190042](#)).

 **NOTE:** Do not reinstall the center console at this time.

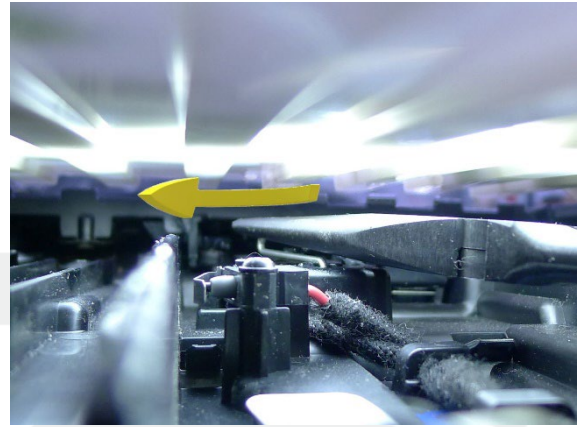
5. Verify the operation of the center console décor lid.
  - The lid stays open – Install the center console (refer to Service Manual procedure [15192402](#)), and then discontinue this procedure. Use correction code S042115006.
  - The lid does not stay open – Go to step 6.

- From the front of the center console (Figure 5), use needle nose pliers to swivel the latch pin to the left, out from under the tang (Figure 6).

**⚠ CAUTION:** Swivel the latch pin as far to the left as possible. If not, the tang might break in the next step. If the tang breaks, replace the center console décor. (Repeat from step 4.)



**Figure 5**



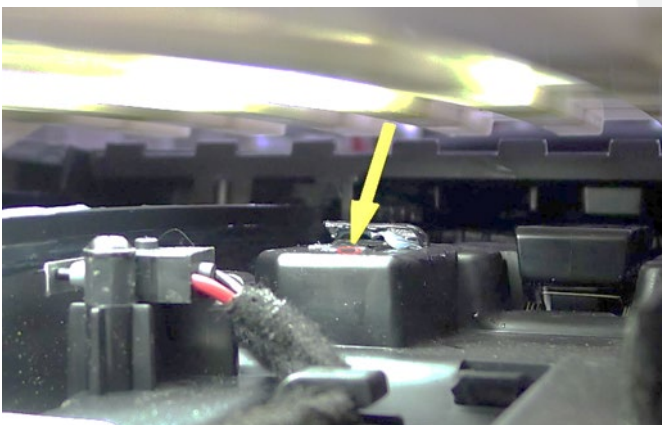
**Figure 6 – Swivel fully to the left**

- Lift up on the latch pin and separate it from the latch pin boss.
- Remove the latch pin from the center console.
- Set the replacement latch pin in the needle nose pliers so that the pliers grip the long shank of the latch pin, with the shank pointing down (Figure 7).



**Figure 7**

- From the front of the center console (Figure 5), use the needle nose pliers to insert the long shank of the latch pin into the hole in the latch pin boss (Figures 8 and 9).

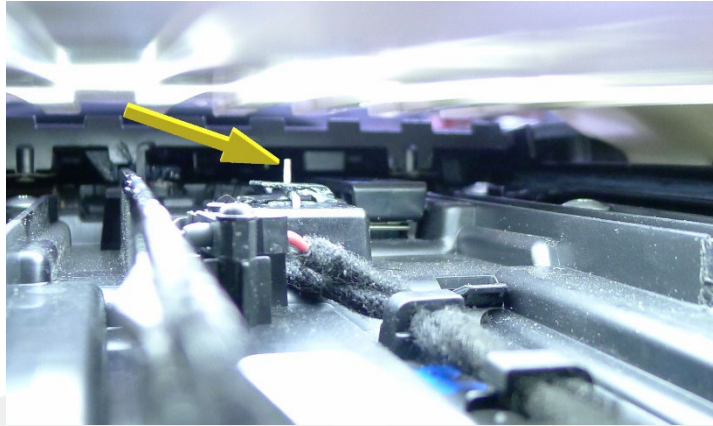


**Figure 8 – Hole in latch pin boss**



**Figure 9 – Latch pin in latch pin boss**

11. Use the needle nose pliers to gently move the latch pin to the left, then back to the right, under the tang (Figure 10).



**Figure 10**

12. Verify the operation of the center console décor lid.

- The lid stays open – Install the center console (refer to Service Manual procedure [15192402](#)), and then discontinue this procedure. Use correction code S022115006 if replaced only the latch pin, or S032115006 if replaced both the décor and the latch pin.
- The lid does not stay open – Replace the center console décor and latch pin. (Repeat from step 4.)