

MAS003617 RU 23-33

RAPID UPDATE

FROM: Maserati TSO

TO: Maserati Network



Maserati

PERSONAL SERVICE LAB

MASTERS OF CARE

TECHNICAL SERVICE OPERATIONS

Rapid Update 644 MC20 & MC20 Cielo - DCTM Purge Cycle



DATE: JULY 12 2023

Certain Maserati MC20 & MC20 Cielo (M240) MY22 MY23 listed in MODISCS+ are involved in a Rapid Update concerning the Dual Clutch Transmission Module (DCTM) purge cycle.

The aim of this action is to mitigate the risk of contamination problems on transmissions, performing the purge cycle in PreDelivery for all the vehicles involved in the list. This procedure prevents some DTCs related to the Pressure Control Solenoid that could be activated on the cluster.

We remind you that all the Rapid Updates must be performed within the first workshop visit, regardless of the Mandatory setting set in Modis, as required by Maserati policies.

Also, for vehicles in Stock Dealer / PDI, it is necessary to carry out all action operations before delivery to the end customer, as required by the White Book and explicitly reported in the Pre-delivery checklist.

Please read and review this bulletin first before starting the procedure.

Contact your Regional AfterSales Manager (RAM) or the Technical Support Helpdesk if you have any questions. (Maseratitechsupport@maserati.com)

Thank You for your continued support and cooperation.

Maserati Americas
Aftersales Dept.

Procedure

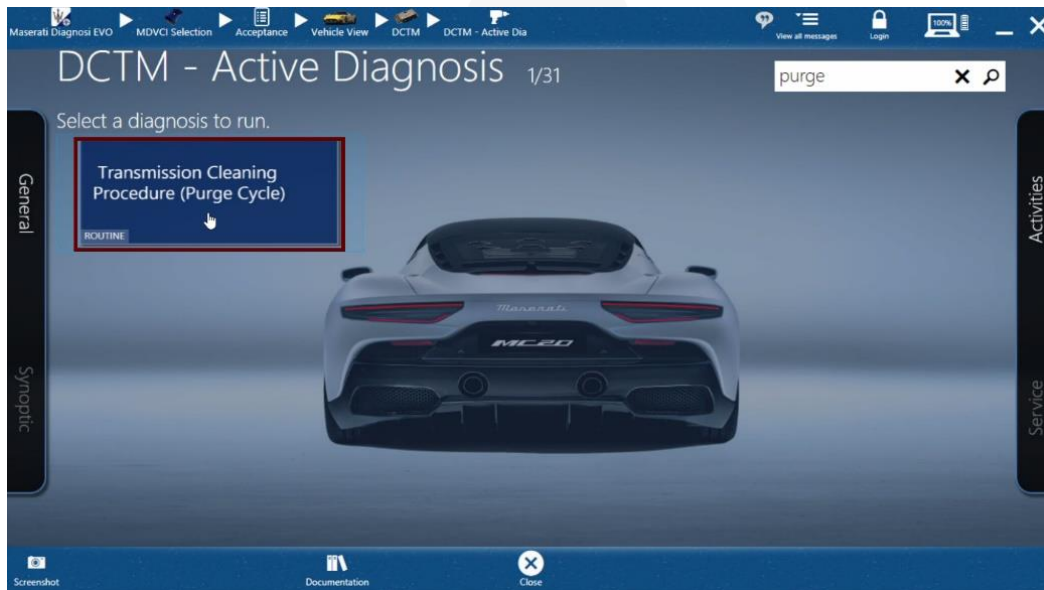
 All images shown in this bulletin are for illustrative purposes only

1. Always check ModisCS+ to see if the vehicle is involved in this action and if it has not been previously performed.
2. Before proceeding, please ensure that the following preconditions are fulfilled:
 - Gearbox in N • Parking Brake ON • Engine ON • Brake Pedal fully depressed.

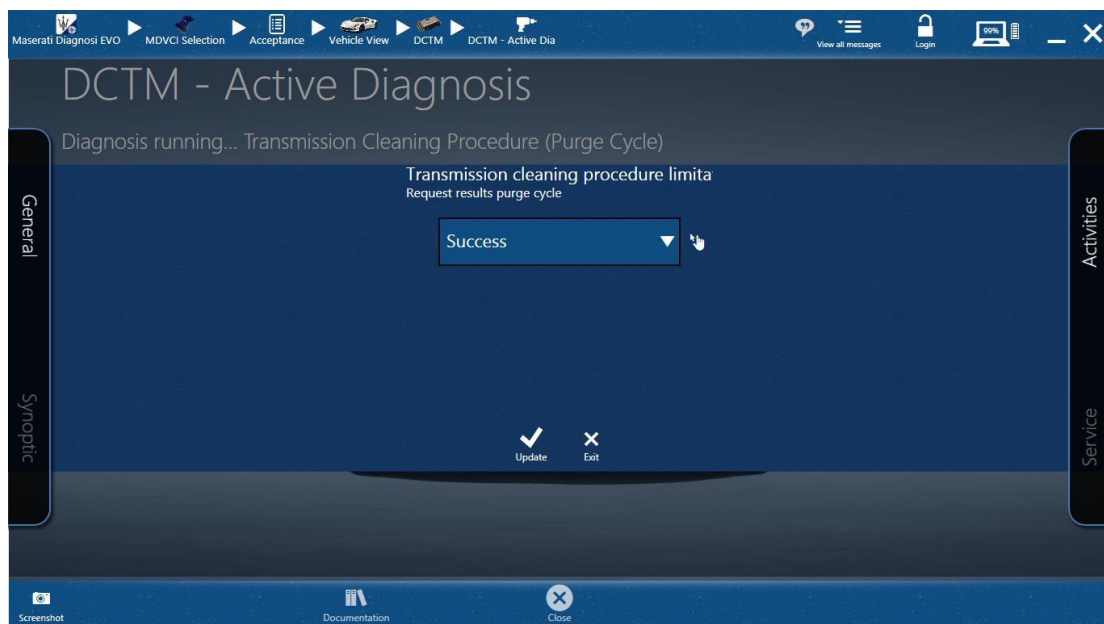
Note: If the Brake Pedal is released, the Active Diagnosis will immediately stop.

3. With the EVO perform **DCTM – Active Diagnosis - Transmission Cleaning Procedure (Purge Cycle)**.

NOTE: Engine RPM will automatically increase and hold at about 3000 rpms for approximately 15 minutes. Continue and hold the brake pedal fully depressed.



4. The cycle can be considered completed when the engine RPM automatically returns to idle speed. To confirm, press the "Update" icon. A "Success" message should appear shortly after. At this point, the brake pedal can be released.



5. Repeat **Step 3** (entire procedure) for a total of 3 times.
6. Procedure complete.

Warranty Claim

Fill in the relative Warranty Claims as follows:

Description	Code
Rapid Update Number	644
Warranty Code	23
Fault Code	063
Component Code	3.10.147
Operation Code	3.10.147.F (0,75h)