



GROUP	MODEL
Product Improvement	2022-2024MY Carnival (KA4) Non-SX-Prestige
NUMBER	DATE
PI2301	August 2023

PRODUCT IMPROVEMENT CAMPAIGN

INSTALLATION OF STEEL REINFORCEMENT PLATES FOR 2ND ROW SEAT OUTER RAILS (PI2301)

SUBJECT:

This bulletin provides information to install steel reinforcement plates on the second-row seat outer rails in certain 2022-2024MY Carnival (KA4) LX/LXS/EX/SX vehicles (without relaxation/power seat feature) produced from January 4, 2021 through August 9, 2023. This campaign is to reinforce the mounting points of the 2nd-row seat to the floor and minimize potential seat rail detachment, should a certain rare crash event occur. Follow the procedure outlined in this publication to install the two (2) outer seat rail reinforcement plates on the applicable vehicle. Before conducting the procedure, verify that the vehicle is included in the list of affected VINs.



NOTICE

A Product Improvement Campaign is a repair program with customer notification. There is no charge to the vehicle owner for this repair.

Repair status for a VIN is provided on KDealer+ (Service → Warranty Coverage → Warranty Coverage Inquiry → Campaign Information). Not completed Recall / Service Action reports are available on WebDCS (Consumer Affairs → Not Completed Recall → Recall VIN → Select Report), which includes a list of affected vehicles.

This issue number is PI2301.

SUBJECT:

INSTALLATION OF STEEL REINFORCEMENT PLATES FOR 2ND ROW SEAT OUTER RAILS (PI2301)

Installation Procedure:

1. Open the left rear sliding door.
2. Fold the 2nd row seatback down and then slide the seat forward.

CAUTION

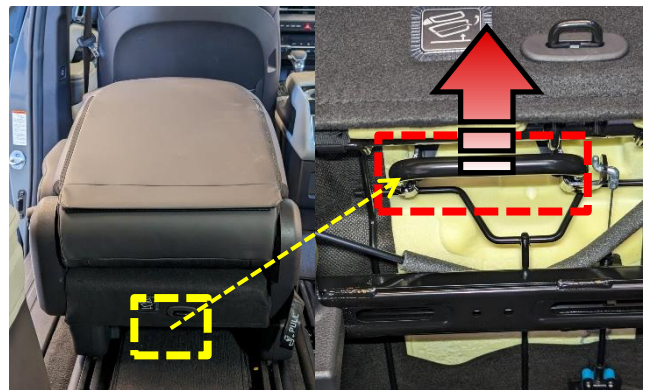
DO NOT let the headrest hit the display screen, if equipped.



3. Remove the left side 2nd row seat by pulling the seat lock release lever located underneath the rear of the seat.

NOTICE

Place the seat in a clean area.

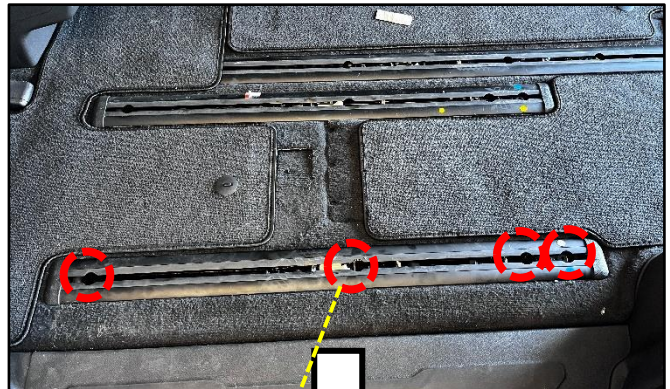


- 4a. Remove the four (4) left outer seat rail T50 retaining bolts.

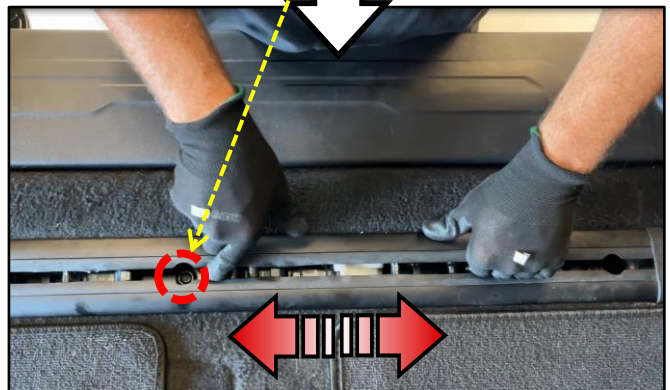
Note: The center bolt may not be visible.



Tightening torque for bolts:
36.1 - 50.6 lb.ft (49.0 - 68.6 N.m)



- 4b. To access the center seat rail retaining bolt, press the seat rail lock lever downward using one hand while holding/sliding the rail with assistance from the other hand.



SUBJECT:

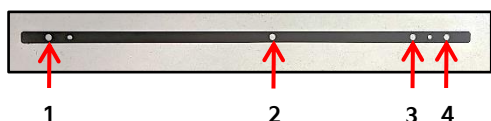
INSTALLATION OF STEEL REINFORCEMENT PLATES FOR 2ND ROW SEAT OUTER RAILS (PI2301)

5. Pull up to remove/detach the left outer seat rail from the interior floor.



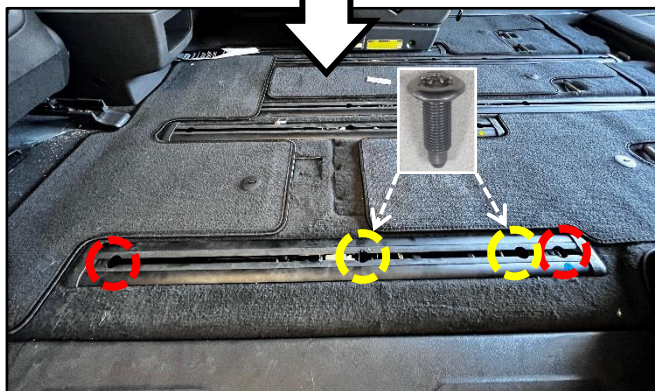
6. Insert the reinforcement plate into the seat rail as shown

Note: Ensure to correctly align the four (4) mounting holes from the reinforcement plate to the seat rail. (Left/driver side shown).



7. Re-install the outer seat rail with the inserted reinforcement plate using two (2) of the bolts removed and two (2) of the four new bolts supplied.

Note: Discard two (2) of the old bolts removed. The two (2) new bolts are to be installed in between the outer bolts, location #2 and #3 (two bolts per seat rail). The other removed 2 bolts, are to be installed in #1 and #4 location.



8. Reinstall the seat in the reverse order of removal.

Note: Be Sure that the outer seat rail lock lever aligns with the inner seat rail side from step 4b.

9. Confirm that the seat is properly mounted by verifying the 'green' alignment indicator on the side of the seat and that the seat slides normally front to back.





10. Repeat steps 1 - 9 to install the reinforcement plate for the right (passenger) side outer seat rail to complete this service.

SUBJECT: INSTALLATION OF STEEL REINFORCEMENT PLATES FOR 2ND ROW SEAT OUTER RAILS (PI2301)

AFFECTED VEHICLE RANGE:

Model	Production Date Range
Carnival (KA4)	January 4, 2021 to August 9, 2023

REQUIRED PART:

Part Name	Part Number	Figure	Qty.	Comments
Reinforcement Plate Kit	895H2 R0010QQK		2	One per side
T50 Bolt	89550 R0000QQK		4	The height of the bolt head is 1mm lower.

Note: Dealers can order up to a maximum order quantity (NET OF WARRANTY CLAIMS) per dealer based on total assigned vehicles. In order to keep the supply of parts flowing, be sure to expedite warranty claim filing.

WARRANTY INFORMATION:

N Code: N99 C Code: C99

Claim Type	Causal P/N	Qty.	Repair Description	Labor Op Code	Op Time	Replacement P/N	Qty.
R	65334 R0000	0	Outer Seat Rail Reinforcement Plate Installation	230059RO	0.4 M/H	895H2 R0010QQK	2
						89550 R0000QQK	4

Note: Refer to Warranty Bulletin 2023-24 for claim submission procedures. When necessary, manually enter sublet code 'X2' for reimbursement of one roundtrip rideshare expense or up to three (3) days of rental. Attach supporting documentation.

NOTICE

VIN inquiry data for this repair is provided for tracking purposes only. Kia retailers should reference **PI2301** when accessing the KDealer+ system.

