

OTA version 2.0.71 | Navigation | DreamDrive | Infotainment Reset | Charging Improvements
| Audio | Access and Comfort | Other Minor Updates

OVERVIEW

With this update, we're introducing enhancements to the Infotainment System in your Lucid Air.

[Navigation](#)

[DreamDrive](#)

[Infotainment Reset](#)

[Charging Improvements](#)

[Audio](#)

[Access and Comfort](#)

[Other Minor Updates](#)

NAVIGATION

Your Alternate Routes are now continuously displayed on the Map while Routing. As needed, auto-added Charging stops are also shown on the Alternate routes.

Info bubbles now display the time or energy differences between Alternate routes.

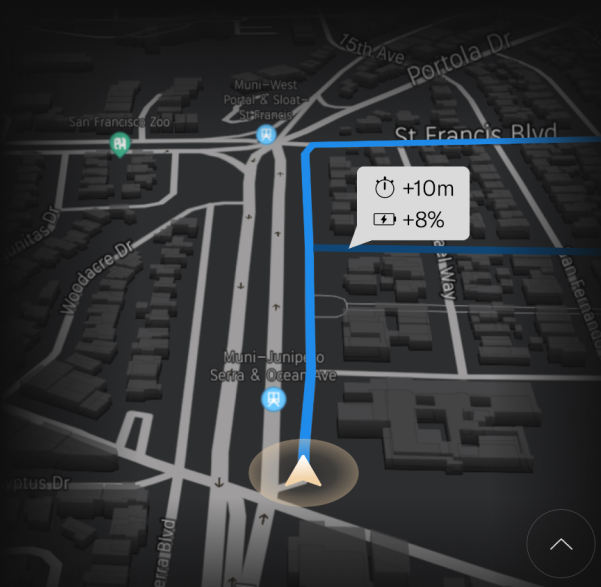
Charging category Search results will continuously display and update the available chargers for each location, on both the Map and List views.

HVAC and Defrost settings, as well as vehicle occupancy, are now considered to determine range and if additional charging stops are needed.

Charger availability information has been updated to show availability by Stand, not by Plug. Both in-car and mobile App will show availability by Stand..

The predicted percentage of energy that is displayed inside the Nav App will constantly refresh while a Route is in progress.

For auto-added Charging stops along the Route, in addition to the business name, the charger Brand name is now also shown.



DREAMDRIVE

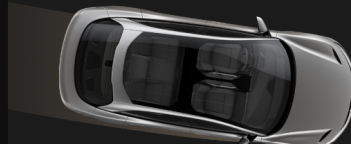
You can now choose from three lane departure protection options: Warning, Intervention, or Both.

Your selected preference will be saved to the driver profile.

Manual Lane Biasing temporarily allows a driver to manually adjust the vehicle's position within a lane while Highway Assist is still engaged and actively controlling the vehicle.

Note: The driver may still override HWA by applying sufficient steering force to overcome HWA steering control of the vehicle.

Exiting Adaptive Cruise Control is now smoother to prevent a discontinuous feel.



INFOTAINMENT RESET

You can now reset your Infotainment System by holding the Air logo in Settings for at least 10 seconds.



CHARGING IMPROVEMENTS

When navigating to a DC charger, your vehicle will intelligently optimize battery preconditioning for faster charging.

Scheduled Charging is now location-based. If you had an active schedule set up you will need to re-establish that schedule after the SW update is complete.



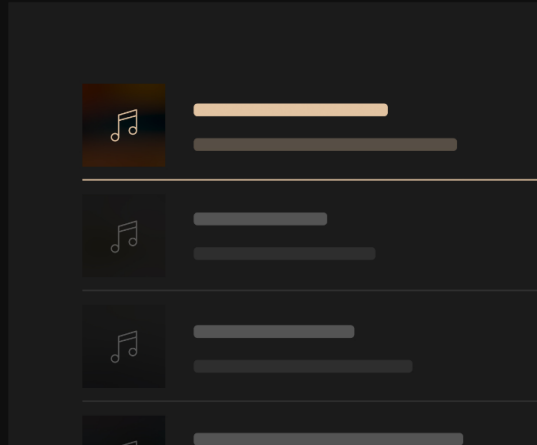
AUDIO

Media Search is now more efficient - You can select a search term from your last searched text.

You now can control the volume at different levels for Phone, Media, Voice assistant, and Navigation.

Last selected Radio Genre will show on top of the Genre list now, so that users do not have to scroll down the list everytime they want to select their favorite Radio Genre.

Spotify now supports Audio Books on your vehicle.

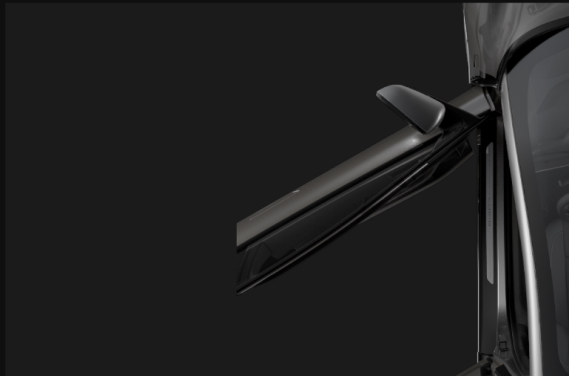


ACCESS AND COMFORT

Easy Entry allows you to have the seat and steering wheel move prior to entering or exiting the vehicle.

You can now engage Max A/C within your vehicle with a single button press.

You can now select whether or not the Passive Unlock/Lock feature will function when your key fob or mobile key is detected by the vehicle.



OTHER MINOR UPDATES

- You can now access the Owner's Manual offline.
- Mobile App will display the SW version of the vehicle.
- We have made improvements to the keyboard to enable Swipe, Handwriting and Predictive Text.
- Other minor updates and enhancements