



GROUP	MODEL
ENG	2024MY Multiple Models (see table on p. 7)
NUMBER	DATE
247	July 2023

TECHNICAL SERVICE BULLETIN

SUBJECT:

DATA COLLECTION: EXTRACT CALIFORNIA EMISSIONS DATA FROM ECU (DC24)

This bulletin provides information related to extracting “in use performance tracking” emissions data from the Engine Control Unit (ECU) of certain vehicles sold in California. The California Air Resources Board (CARB) requires the emissions data from vehicles with a minimum of 3,000 accumulated miles without reprogramming or resetting. To facilitate collection of this data at the dealer level, KDS screenshots will allow the capture of relevant parameters. Note that a “Web Based” KDS IUMPR Data Collection procedure is outlined. Reference TSB [SST064](#).

NOTICE

If the vehicle meets the criteria below, California dealers must perform this data collection on vehicles whenever an affected vehicle is in the shop and prior to any campaign, maintenance, or repair-related activities.

This data collection DOES NOT apply to vehicles or dealers operating outside of California.

Once sufficient data is collected, individual line items per model may be closed without updates to the TSB. Once a line item is closed on Dealer Communication System (DCS), no further data collection is required. Data collections initiated after a line item is closed are subject to chargeback.

For vehicles listed on DCS as requiring this procedure, follow the instructions in this bulletin after confirming that the following criteria are met:

- KDealer+ shows this as an open Data Collection code DC24XXXX (depending on model; see table on page 7) for the vehicle.
- Vehicle has more than 3,000 accumulated miles on its odometer.
- Vehicle repair history does not show battery replacement/disconnection/reset or an ECU update done in the last 3,000 miles, because IUMPR (In Use Monitor Performance Ratio) data would have been cleared by such an event.
- Vehicle does not have a Malfunction Indicator Lamp (MIL) ON.

DATA COLLECTION: EXTRACT CALIFORNIA EMISSIONS DATA FROM ECU (DC24)

SUBJECT:

❗ IMPORTANT

A number of received data submittals are incomplete and are therefore not usable. Examples: Invalid R/O number, incomplete VECI label Group number, no mileage reported, etc. In order to ensure 100% complete and valid data submittals as well as to ensure related warranty claims will be processed without delay and not be subject to chargebacks, carefully review and adhere to the updated process steps below.

KDS Service Procedure:

📄 NOTICE

Starting on May 31, 2019 with the release of KDS Internet Update M-N-K-01-00-0135, the new IUMPR function will be loaded onto the KDS. Once installed, all IUMPR data will be electronically transmitted by KDS when connected to internet.

1. Open the engine compartment and locate the Vehicle Emission Control Information label located on the underside of the hood.

Record the 11-digit "Group" number (A) for later entry into screen.

KIA KIA MOTORS CORPORATION VEHICLE EMISSION CONTROL INFORMATION		
Conforms to regulations :	20XX MY	
U.S.EPA : T3B125LDV	OBD : CA II	Fuel : Gasoline
California : LEV III ULEV125	OBD : CA II	Fuel : Gasoline
No adjustments needed. R-HO2S/HO2S/WU-TWC/TC/CAC		
Group : JKMXV02.04X6	AA22	32431-2CCA1
Evap. : JKMXR0140DYE		

2. Connect the VCI-II to the OBD-II connector, located under the driver's side of the instrument panel.



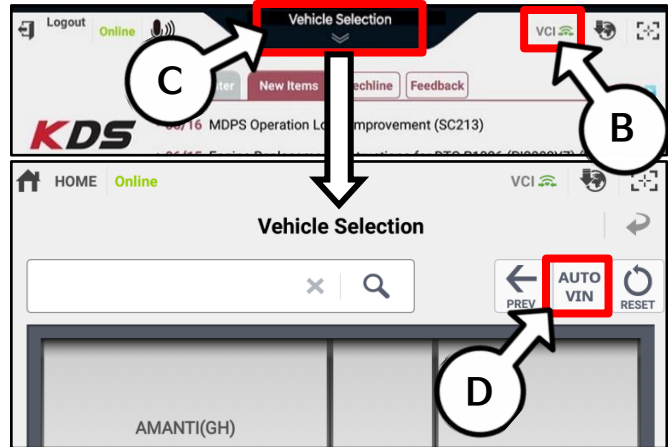
3. With the ignition ON, turn ON the KDS tablet. Select 'KDS' from the home screen.



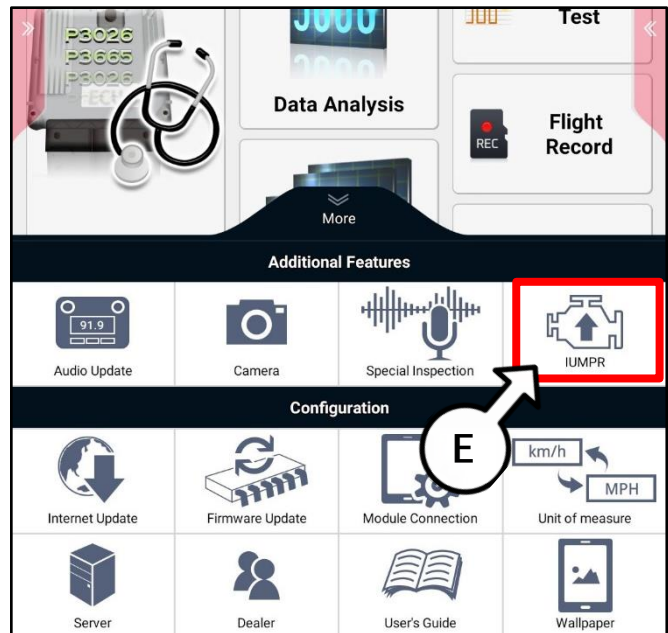
SUBJECT:

DATA COLLECTION: EXTRACT CALIFORNIA EMISSIONS DATA FROM ECU (DC24)

- Confirm communication with VCI (B) and then configure the vehicle (C) using the 'AUTO VIN' (D) feature.



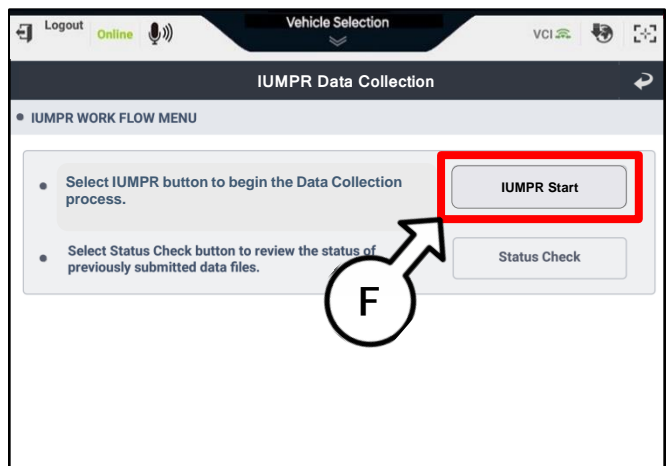
- Select the 'IUMPR' function (E) from the **More** section after pulling it up from the bottom of the screen.



- Select 'IUMPR Start' (F).

NOTICE

Make sure KDS is connected to the internet. It must be able to confirm the vehicle has an open DC 24 Data Collection.



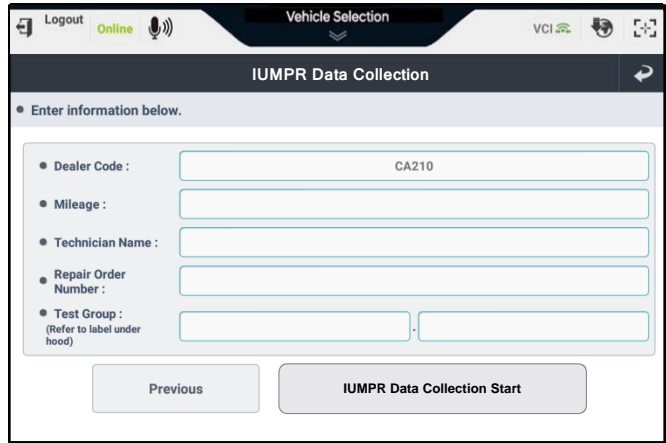
DATA COLLECTION: EXTRACT CALIFORNIA EMISSIONS DATA FROM ECU (DC24)

SUBJECT:

- The IUMPR Data Collection screen should open in the event the vehicle has an open DC 24 Data Collection.

NOTICE

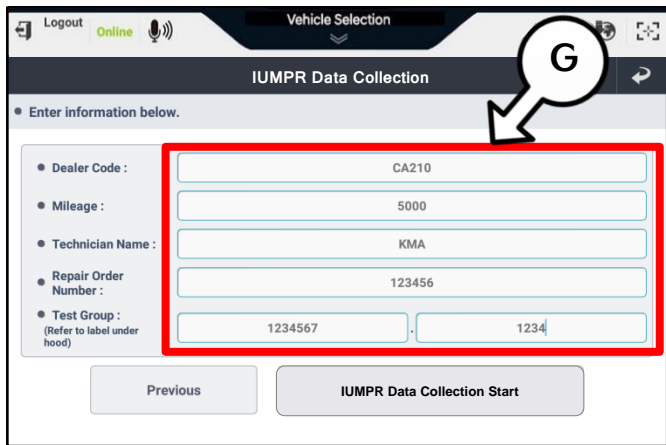
You may receive an error screen if vehicle does not have an open DC 24 Data Collection, or if any of the other conditions specified on page 1 does not apply.



- Enter the applicable information (G) accurately into each field.

NOTICE

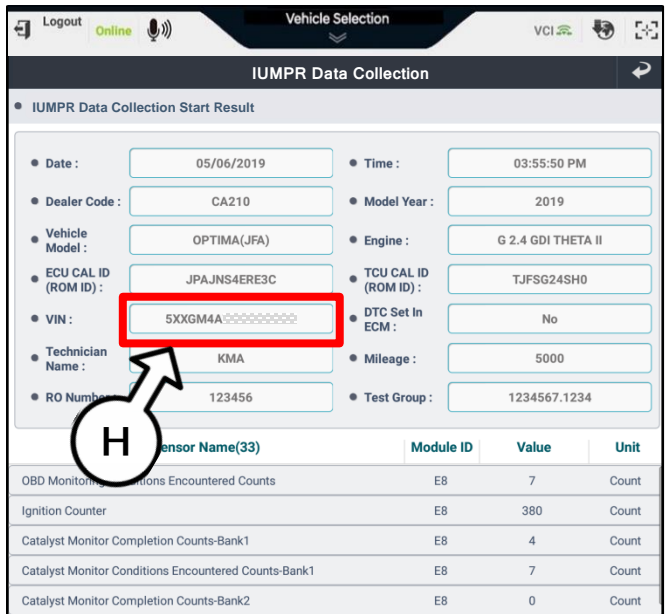
Test Group is found on the engine underhood emission label. Refer to step 1 on page 2.



- The following screen confirms your entered information and the first page of collected IUMPR data.

NOTICE

Confirm the correct VIN (H) was successfully captured by the initial KDS Auto VIN.



SUBJECT:

DATA COLLECTION: EXTRACT CALIFORNIA EMISSIONS DATA FROM ECU (DC24)

10. Scroll the screen down to the second page until the 'Send' (I) button appears.

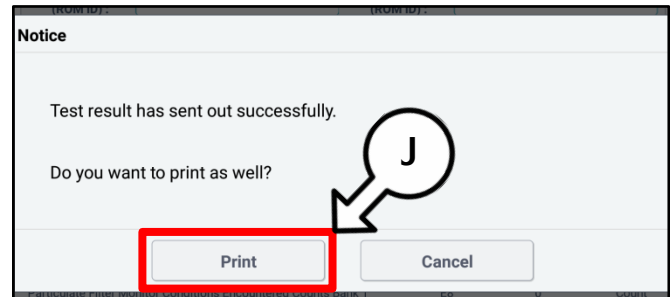
Select 'Send' (I) to transmit collected data to Kia's server.

Sensor Name(33)	Module ID	Value	Unit
Air Fuel Ratio Imbalance Monitor Completion Counts Bank 2	E8	0	Count
Air Fuel Ratio Imbalance Monitor Conditions Encountered Counts Bank 2	E8	0	Count
Particulate Filter Monitor Completion Counts Bank 1	E8	0	Count
Particulate Filter Monitor Conditions Encountered Counts Bank 1	E8	0	Count
Particulate Filter Monitor Completion Counts Bank 2	E8	0	Count
Particulate Filter Monitor Conditions Encountered Counts Bank 2	E8	0	Count
Certification Test Group/Engine Family Number	E8	KKMXV02.4DH3	-
Ignition Counter (Recent)	E8	0	Count
Total Distance Traveled (Recent)	E8	0	km
Positive Kinetic Energy (Recent)	E8	0	km/h2
Total Propulsion System Active Time (Recent)	E8	0	Sec

Previous Send

11. This screen will confirm KDS has successfully electronically transmitted the vehicle's IUMPR data to Kia's server.

Select 'Print' (J) to get a record of the IUMPR data collection to attach to the repair order as evidence of collection.

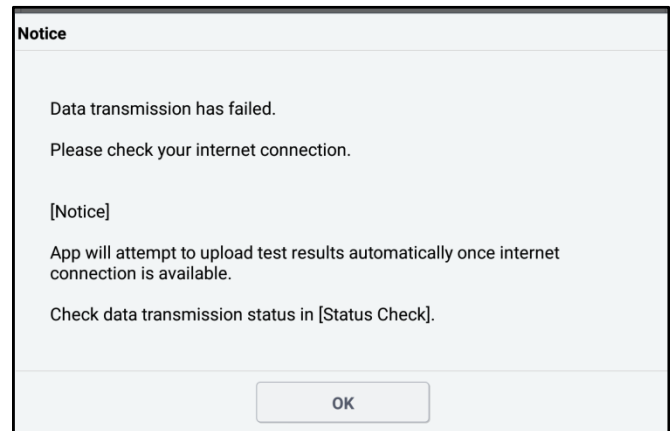


NOTICE

Submission of screenshots by KDS Feedback is no longer required for claim payment. The data will be transmitted electronically by KDS.

12. If the event of an unsuccessful transmission of data, the following error screen may occur:

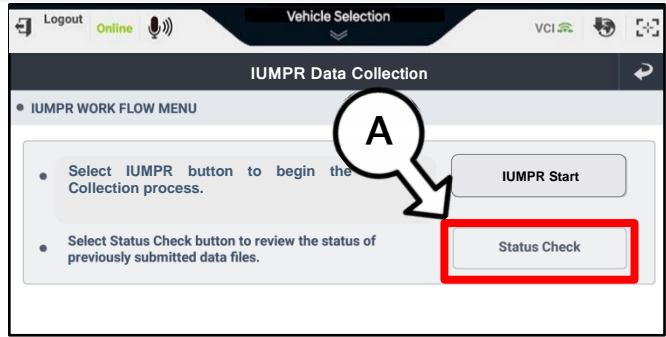
- a) Refer to **Checking IUMPR Data Transmission Status** on page 6 to confirm if status shows "pending", meaning that the data has been captured by KDS and will automatically be sent when internet is later restored.
- b) Should **Checking IUMPR Data Transmission Status** not show a status of "pending" or "sent" for the applicable VIN, then the above collection procedure steps 1-11 will need to be repeated.



SUBJECT: DATA COLLECTION: EXTRACT CALIFORNIA EMISSIONS DATA FROM ECU (DC24)

Checking IUMPR Data Transmission Status:

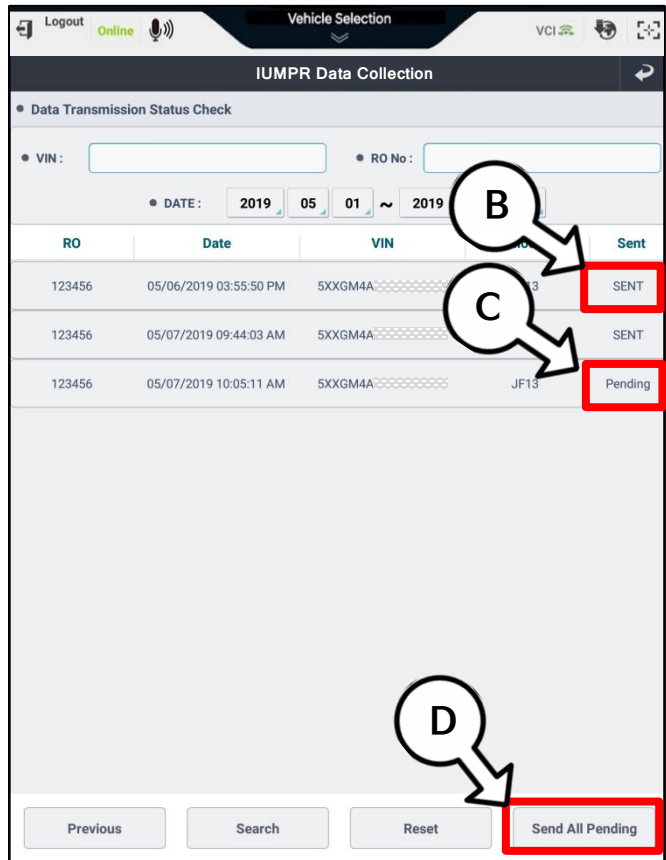
1. Select 'Status Check' (A) from the DC Data Collection screen.



2. The Data Transmission Status Check screen will display the following:

(B) **Sent** indicates IUMPR data has been sent successfully to Kia's server.

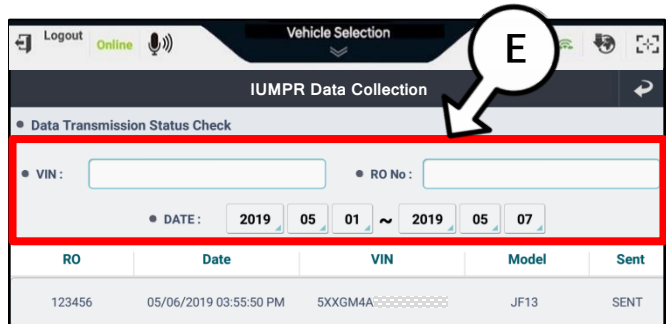
(C) **Pending** indicates IUMPR data was collected and saved in KDS, but remains to be sent automatically to the Kia server once an internet connection is later established.



NOTICE
 You may try 'Send All Pending' (D) if you have just connected to the internet, otherwise it will be sent automatically once internet is restored. You can confirm transmission status later.

3. A particular VIN or R/O number or Date range (E) can be entered at the top search section to find past collected data sent from the KDS.

NOTICE
 To display past collected data, select any case on the list to view it.



SUBJECT:

DATA COLLECTION: EXTRACT CALIFORNIA EMISSIONS DATA FROM ECU (DC24)

AFFECTED VEHICLE RANGE:

Model	Production Date Range
Multiple Models Listed Below in Warranty Table	2024MY (Sold in California only)

WARRANTY INFORMATION:

N Code: N99 C Code: C99

Campaign ID	Claim Type	Causal P/N	Qty.	Repair Description	Labor Op Code	Op Time	Replacement P/N	Qty.
DC24KA41	V	100CA EM999	0	Carnival (KA4) 3.5L (ULEV)	24KA4351	0.4 M/H	N/A	0
DC24BD1				Forte (BD/BDm) 1.6L-T (ULEV)	24BD16U1			
DC24BD2				Forte (BD/BDm) 2.0L (SULEV)	24BD20S1			
DC24DL31				K5 (DL3a) 1.6L-T (ULEV)	24DL3161			
DC24DL32				K5 (DL3a) 2.5L-T (ULEV)	24DL3251			
DC24SG2H				Niro HEV (SG2 HEV) 1.6L (SULEV)	24SG2H16			
DC24SG2P				Niro PHEV (SG2 PHEV) 1.6L (SULEV)	24SG2P16			
DC24SP21				Seltos (SP2) 1.6L (ULEV)	24SP2161			
DC24SP22				Seltos (SP2) 2.0L (ULEV)	24SP2201			
DC24MQ41				Sorento (MQ4) 2.5L-T (ULEV)	24MQ4251			
DC24MQ42				Sorento (MQ4) 2.5L (ULEV)	24MQ4252			
DC24MQ43				Sorento HEV (MQ4 HEV) 1.6L-T (SULEV)	24MQ4161			
DC24MQ44				Sorento PHEV (MQ4 PHEV) 1.6L-T (SULEV)	24MQ4162			
DC24SK31				Soul (SK3) 2.0L (SULEV)	24SK3201			
DC24NQ51				Sportage (NQ5) 2.5L (ULEV)	24NQ5251			
DC24NQ52				Sportage HEV (NQ5 HEV) 1.6L-T (ULEV)	24NQ5161			
DC24NQ53				Sportage PHEV (NQ5 PHEV) 1.6L-T (SULEV)	24NQ5162			
DC24ON1				Telluride (ON) 3.8L (ULEV)	24ON38U1			

