



**Countries:** CANADA, UNITED STATES, MEXICO  
**Availability:** ISIS, Bus ISIS, FleetISIS, NotSIR  
**Major System:** SOFTWARE  
**Current Language:** English  
**Other Languages:** NONE  
**Viewed:** 55

**Document ID:** IK4300026  
**Revision:** 0  
**Created:** 7/12/2023  
**Last Modified:** 7/12/2023  
**Author:** Eric George

[Less Info](#)

Hide Details

Coding Information

<b>Copy Link</b> 	<b>Copy Relative Link</b> 	<b>Bookmark</b>  <a href="#">View My Bookmarks</a>	<b>Add to Favorites</b> 	<b>Print</b> 	<b>Provide Feedback</b> 	<b>Helpful</b>  3	<b>Not Helpful</b>  0
----------------------	-------------------------------	--	-----------------------------	------------------	-----------------------------	-------------------------	-----------------------------

**Title:** SDS EV OCI Charging Session Instructions

**Applies To:** SDS eMV EV CE Bus

## CHANGE LOG

Please refer to the change log text box below for recent changes to this article:

07/12/2023 - Initial Article Release

## DESCRIPTION

The SDS OCI charging session will record a CAN log (trace) at the start of a HV battery charging session. This session will capture/record the beginning of the charging session from when you first plug in the charger and start the charging session. This Session will record and upload to the cloud a ZIP file that contains a CAN Log of all signals. A link to this ZIP file can be included in a case file for further analysis by Technical Service. The CAN log cannot be analyzed or played back in SDS.

## SPECIAL TOOLS / SOFTWARE

Tool Description	Tool Number	Comments
Service Diagnostic Solutions (SDS)		Release 1.10.17.2023
Electric Vehicle "Y" Adaptor Cable	08-801-01	
Nexiq USB 2 or Nexiq USB 3		

Electric Vehicle "Y" Adaptor Cable 08-801-01 must be used when diagnosing and recording signals with SDS. The EV Y adapter cable can only be used with the NEXIQ USB2 or NEXIQ USB3 adapter.



Electric Vehicle "Y" Adaptor Cable

[Tools Resource Center](#)

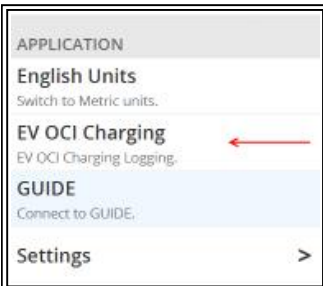
## **SESSION INSTRUCTIONS**

### **Connection:**

1. Connect a Nexiq USB 2 or Nexiq USB 3 to the Electric Vehicle "Y" Adaptor Cable 08-801-01 and to the EZ-Tech ( Laptop) USB port
2. Connect the Electric Vehicle "Y" Adaptor Cable 9 Pin connection to EV vehicle 9 pin DLC connector.
3. Connect the Electric Vehicle "Y" Adaptor Cable 10 Pin connection to the EV 10 pin connector.

### **Session Menu:**

1. Menu > Applications > EV Signal Monitor



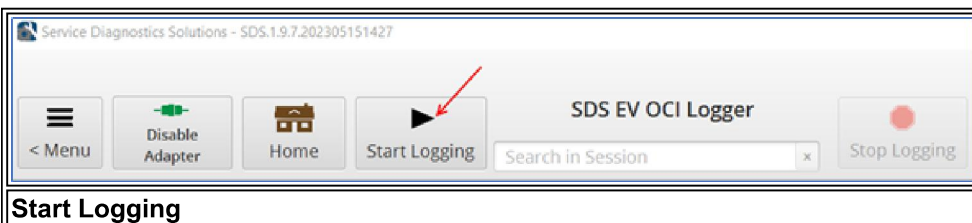
SDS Application Menu

### **Record CAN log (Trace) during a HV Charging Session:**

This session is designed to record a HV EV charging session with key off. The session will prompt the user to connect the HV charger and start the HV EV Charging Session when all Key off and CAN traffic conditions are met.

Follow the instructions below to launch the session with vehicle key off.

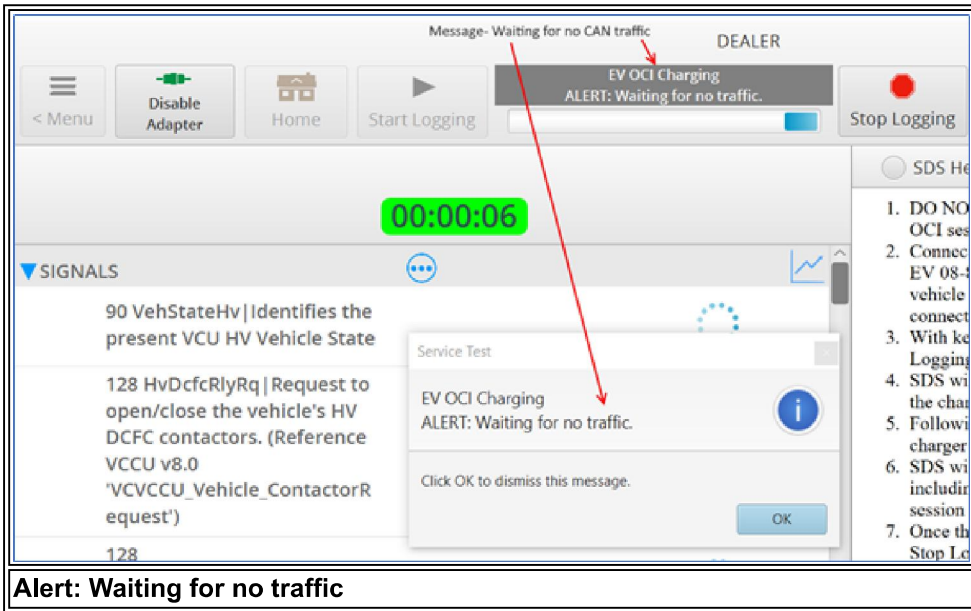
1. DO NOT turn the key on for this OCI Charging session
2. Connect NEXIQ USB Link 2 or 3 with EV 08-801-01 Y Cable connected to the vehicle 9 Pin and 10 Pin diagnostic connectors
3. With key off, launch SDS
4. Go to Menu > Applications > EV OCI Charging
5. Set Park Brake, Key off, Charger Disconnected and on eMV the driver's door must be closed
6. Click the Start Logging button at the top of the session.



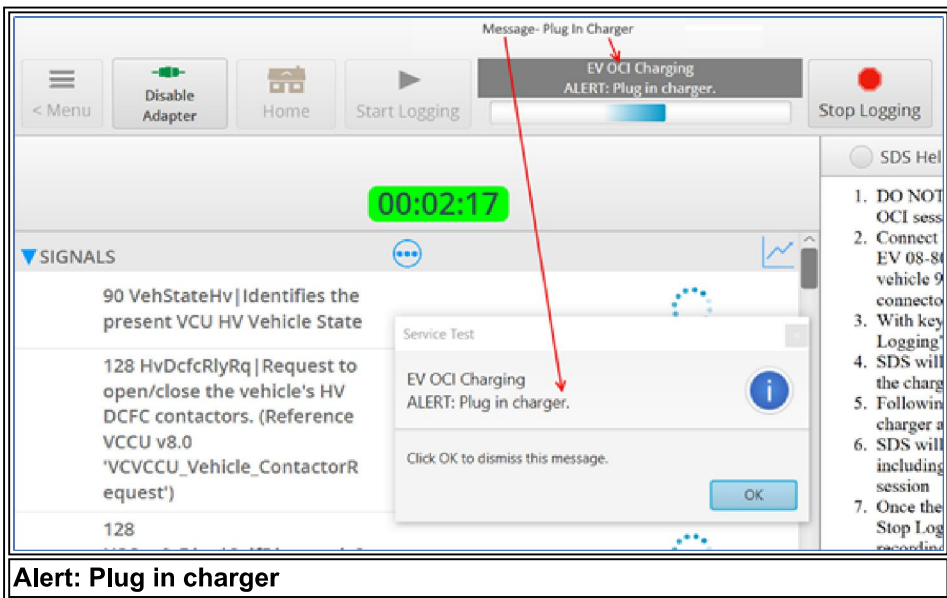
Start Logging

7. Follow the onscreen messages for each step:

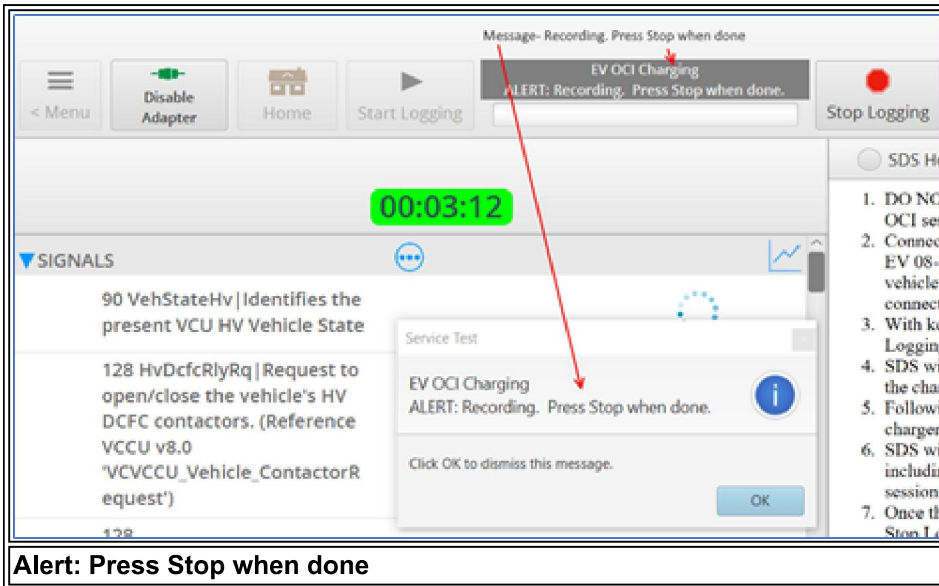
- Alert: **Waiting for no traffic** - Waiting for all CAN traffic to stop before prompting to connect the EV HV Charger



- Alert: **Plug in Charger** – Connect the EV HV Charger and start a Charging Session on the charger control panel.

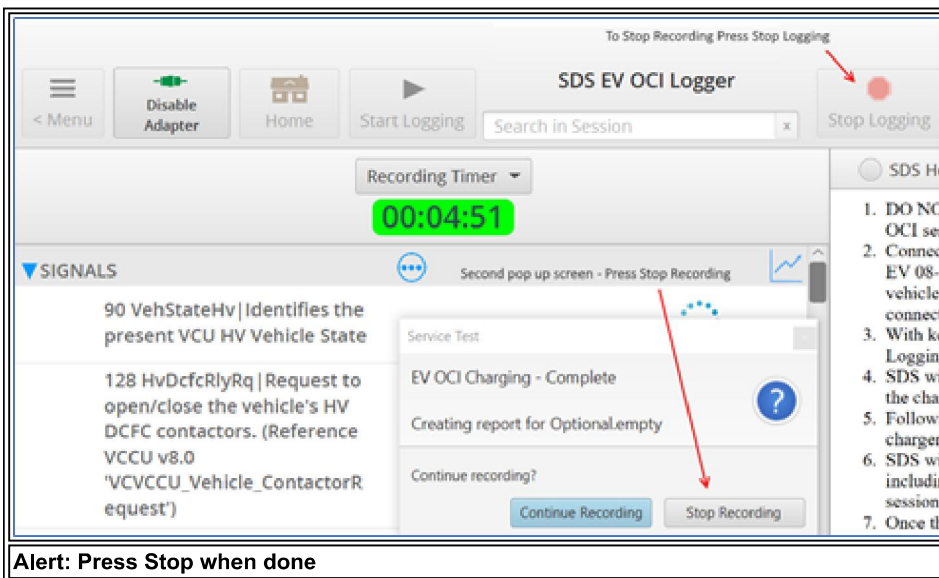


- Alert: Recording. Press Stop when done – Recording will start once the charger is plugged into the charge port and the charge session is initiated.



8. Continue recording at least 3 minutes after the condition or fault occurs. Once the testing is complete and, click the **Stop Logging** button to stop the recording

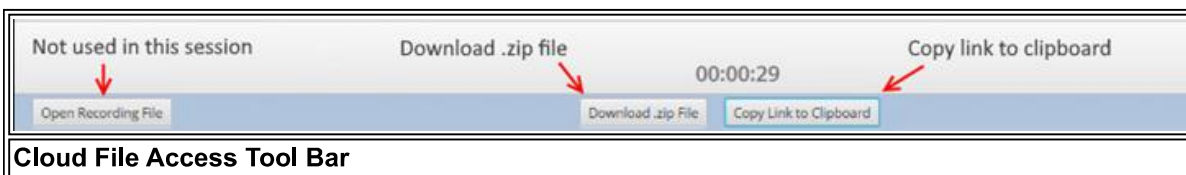
  - At Pop Up screen – press Stop Recording



### Accessing Recorded Files:

All recorded CAN logs are now automatically uploaded to the Navistar cloud storage. To access or download these files from the Navistar cloud, follow these instructions:

1. Click on the **Download .zip File** button to download the file to your PC. This download will use your default browser to download the file to the browser default download folder. The downloaded file can be attached to a case file or email (dependent on the file size).
2. Click on the **Copy Link to Clipboard** to copy a link to the file on the cloud. This link can then be pasted in a case file or email. Technical Service can access this file on the cloud using the provided link.

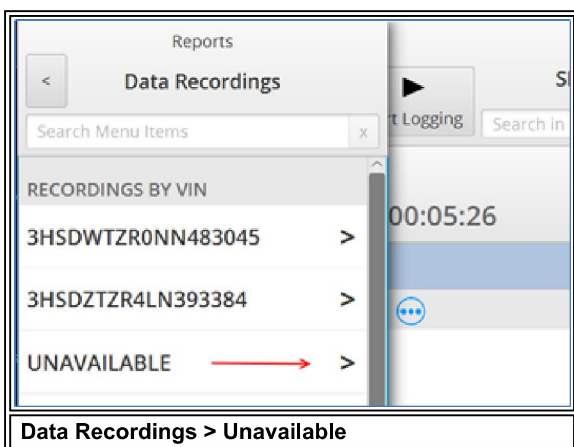


### Accessing Historical Data Recordings

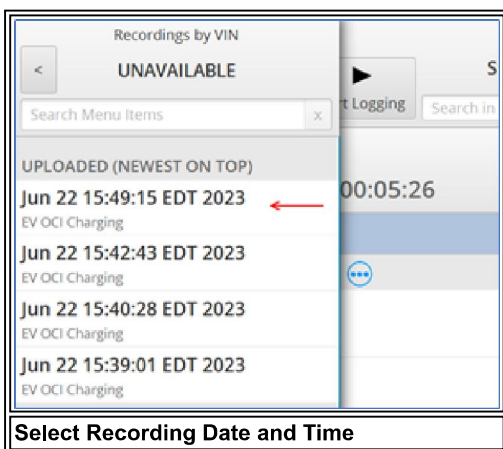
1. Go to Menu > Reports > Data Recordings



2. The EV OCI Charging CAN logs will be listed under Unavailable



3. Select the specific date and time of the recording.



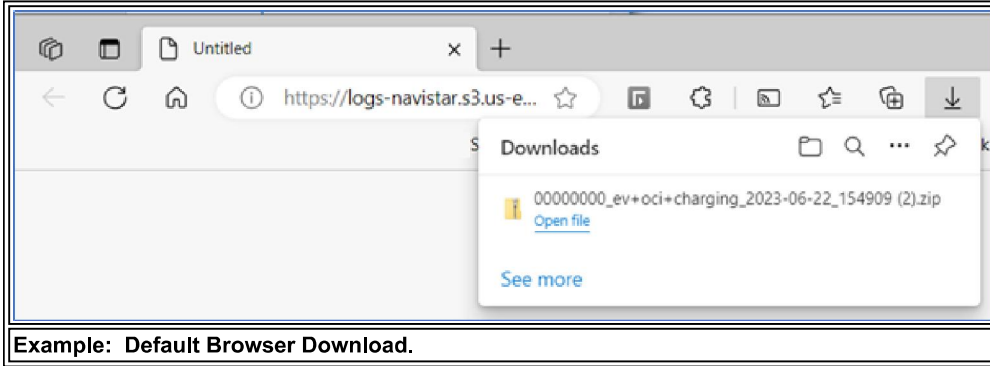
4. There are two selections on the popup screen:

- Download
- Copy Link to Clipboard



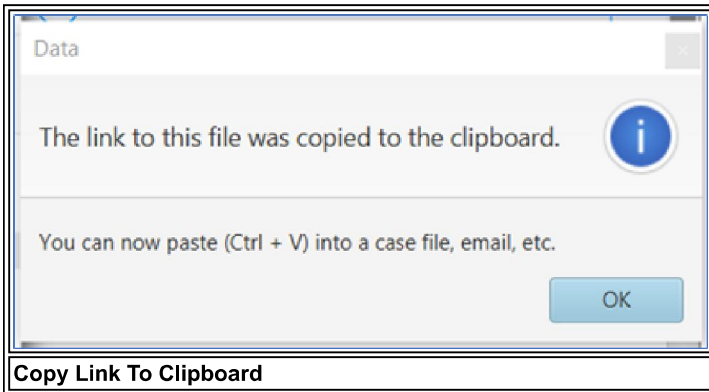
**Pop-Up Selection**

- **Download** – download the CAN log in Zipped file to your default browser download folder. This file can be attached to a case file or email. Example browser download. This will vary depending on your default browser and settings.



**Example: Default Browser Download.**

- **Copy Link to Clipboard** – Copies a link to your clipboard. This link to the file can be pasted in a case file. This link will allow Technical Service access and download capabilities of the CAN log file



**Copy Link To Clipboard**

---

## **OTHER RESOURCES**

[Master Service Information Site](#)

[Print - PDF Version](#)

Hide Details

**Feedback Information**

Viewed: 54  
Helpful: 3  
Not Helpful: 0

No Feedback Found