



## Slide-out Wall Crack Instructions

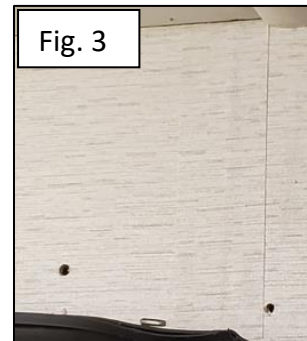
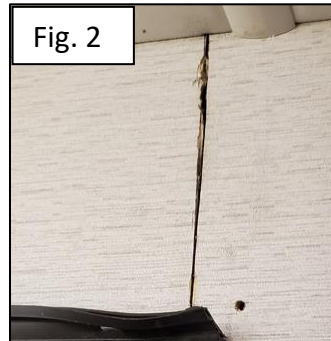
<b>Bulletin Type:</b>	TSB	<b>Publication Date:</b>	July 2023
<b>Bulletin #(s):</b>	23-111	<b>Make(s):</b>	Jayco, Entegra Coach
<b>Job Code(s):</b>	9803588	<b>Model(s):</b>	Seneca XT (35L, 32U) Accolade XT (35L, 32U)
<b>Flat Rate(s):</b>	2 Slide-out Wall Repair 9803588A 4.0 HR. Labor 1 Slide-out Wall Repair 9803588B 2.0 HR Labor	<b>Model Year(s):</b>	2023

<b>Incident:</b>	Cracks may form at the upper corners of the off door side (ODS) and/or door side (DS) Front Slide-outs.
<b>Affected Units:</b>	2023 Jayco 35L, 32U Seneca XT; 2023 Entegra Coach 35L, 32U Accolade XT
<b>Parts List:</b>	Parts Kit 23-111JMA
	<b>35L (Driver and Passenger Slide-out)</b> 88 - RIVET,POP STL .19X.55 OPEN END DOME (.251-.375 GRIP) 2 – BRACKET,SW 4.50X4.75X1.50 14GA STL LH WPC 2 – BRACKET,SW 4.50X4.75X1.50 14GA STL RH WPC 2 Foot – TAPE,FILM 01.50 TMRNL 2 Foot - COVER,SEAM BLK PLSTC FL 1.06 W/ADHBK
	Parts Kit 23-111JMB
	<b>32U (Driver Slide-Out)</b> 44 - RIVET,POP STL .19X.55 OPEN END DOME (.251-.375 GRIP) 1 – BRACKET,SW 4.50X4.75X1.50 14GA STL LH WPC 1 – BRACKET,SW 4.50X4.75X1.50 14GA STL RH WPC 1 Foot – TAPE,FILM 01.50 TMRNL 1 Foot - COVER,SEAM BLK PLSTC FL 1.06 W/ADHBK
<b>Misc. Tools &amp; Supplies:</b>	Screwgun with Square Bit Drill with 3/16" Drill Bit Putty Knife Rivet Gun Rubber Mallet Oscillating Saw Caulk Gun Clear Silicone Sealant Quad Max Sealant

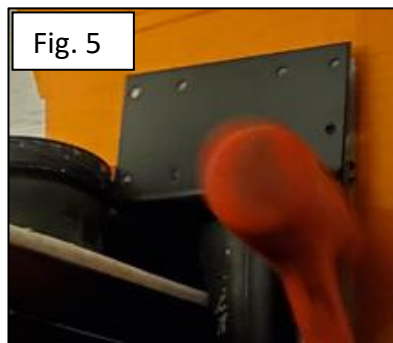
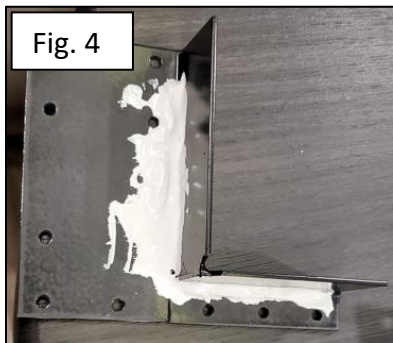
# SLIDE-OUT WALL CRACK INSTRUCTIONS

## In-Wall Slide-out Repair

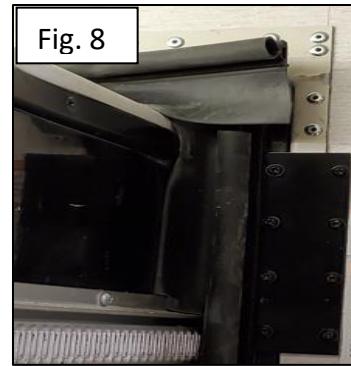
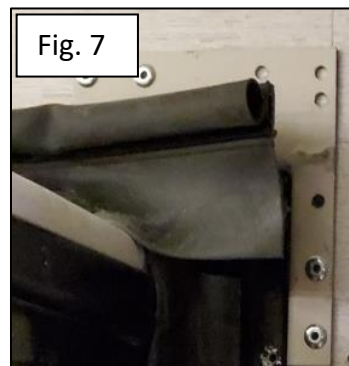
1. Slide the rubber bulb seal away from the corner and remove the fasteners. (Figure 1)
2. At the front of the slide-out, cut the vinyl board from the slide-out opening to the roof with an oscillating saw. The rear should not need to be cut. (Figure 2)
  - a. **NOTE: When cutting the vinyl board, caution should be used to ensure the aluminum tube is NOT cut.**
3. Utilize a putty knife to smooth out the cut and apply seam tape. (Figure 3)



4. Apply sealant to the back side of the right hand corner bracket. (Figure 4)
5. With the assistance of a rubber mallet, install the corner bracket. (Figure 5)
6. With the corner bracket flush to the sidewall, drill 3/16" holes through the bracket, vinyl board and structural aluminum tube in the opposite corners. (Figure 6)
  - a. **NOTE: When drilling, only the interior side of the aluminum tube MUST be drilled.**



7. With a rivet gun secure rivets in the corners. (Figure 7)
8. Drill 3/16" holes through the bracket, vinyl board and structural aluminum tube all of the remaining holes in the bracket.
  - a. **NOTE: When drilling, only the interior side of the aluminum tube MUST be drilled.**
9. With a rivet gun secure rivets in all remaining holes.
10. Re-secure the trim with the fastener previously removed and slide the bulb seal back to the corner. (Figure 8)



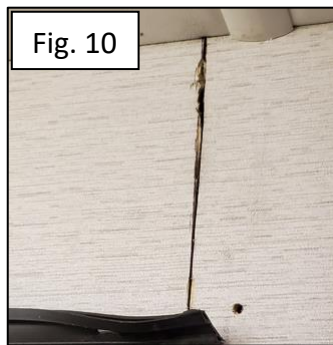
11. Repeat steps 1-10 on the opposite corners.

## Above Floor Side Slide-out Repair

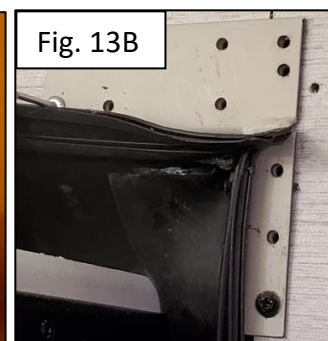
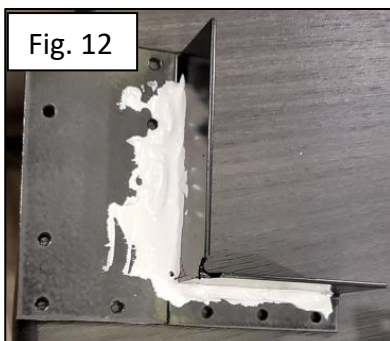
1. Slide the rubber bulb seal away from the corner and remove the fasteners. (Figures 9A and 9B)



2. Fold the trim out of the way.
3. Using a putty knife, pry the wiper seal from the slide-out opening in the corner.
4. At the front of the slide-out, cut the vinyl board from the slide-out opening to the roof with an oscillating saw. The rear should not need to be cut. (Figure 10)
  - a. **NOTE: When cutting the vinyl board, caution should be used to ensure the aluminum tube is NOT cut.**
5. Utilize a putty knife to smooth out the cut and apply seam tape. (Figure 11)



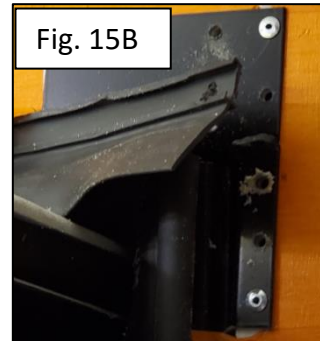
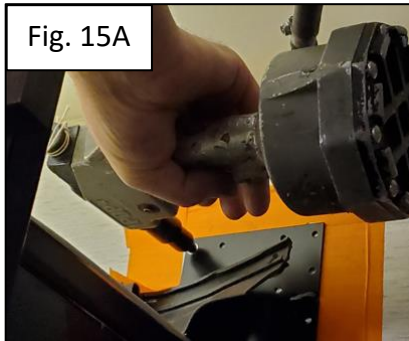
6. Apply sealant to the back side of the corner bracket. (Figure 12)
7. With the assistance of a rubber mallet, install the right hand corner bracket. If needed, use one of the #10 panhead fasteners removed to fasten the bracket flush to the wall. (Figure 13A-13B)



8.

9. With the corner bracket flush to the sidewall, drill 3/16" holes through the bracket, vinyl board and structural aluminum tube in the opposite corners. (Figure 14)
  - NOTE: When drilling, only the interior side of the aluminum tube MUST be drilled.**

10. With a rivet gun secure rivets in the corners. (Figure 15A-15B)



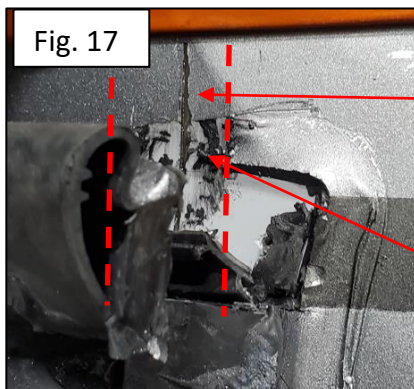
11. Drill 3/16" holes through the bracket, vinyl board and structural aluminum tube all of the remaining holes in the bracket.
  - a. **NOTE: When drilling, only the interior side of the aluminum tube MUST be drilled.**
12. With a rivet gun secure rivets in all remaining holes.
13. Re-secure the trim with the fastener previously removed and slide the bulb seal back to the corner. (Figure 16)



14. Re-peat steps 1-12 on the opposite corner.

## Exterior Relief Cuts and/or Crack Repairs

1. Slide the rubber bulb seal away from the corner and remove the fasteners.
2. Using a putty knife, pry the wiper seal from the slide-out opening in the corner.
3. At the front of the slide-out, cut the exterior fiberglass from the slide-out opening to the upper gutter rail with an oscillating saw. The rear should not need to be cut.
  - a. **NOTE: When cutting the vinyl board, caution should be used to ensure the aluminum tube is NOT cut.**
4. Utilize a putty knife, remove previously installed seal 3/4 inch on each side of the cut. (Figure 17 – Dashed Area)



Cut from slide-out opening to gutter rail

Remove previous sealants

5. Blow out the crack and area surrounding to remove loose debris.
6. Using a caulk gun, fill the cut with silicone sealant and scrape smooth with exterior wall.
7. Clean area on both sides of the cut with Pro Bond.
8. Remove the backing from the adhesion tape and apply black seam cover over the cut.
9. Re-secure the trim with the fastener previously removed and slide the bulb seal back to the corner.
10. Apply Quad Max sealant around rubber molding and seam cover. (Figure 18)

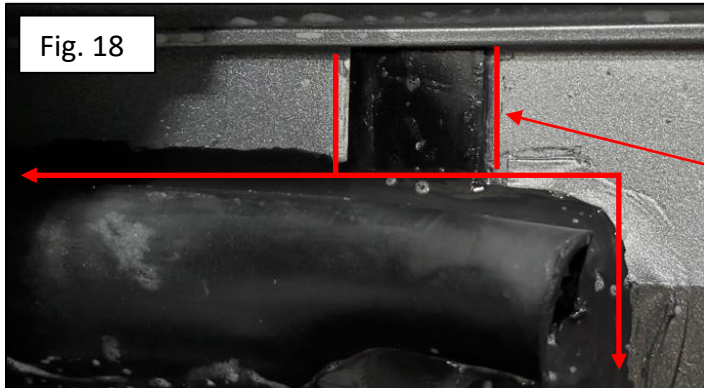


Fig. 18

Apply Quad Max Sealant

*Jayco's sole obligation under our limited warranty is to repair or replace defective materials and/or workmanship deemed our responsibility as determined by Jayco in our sole discretion. Jayco reserves the right to use new and/or remanufactured parts or materials of similar quality to complete any work, and to make parts and/or design changes as appropriate without notice to anyone. Jayco designs and/or materials changes are done without obligation to incorporate such changes in previously manufactured product. Jayco makes every reasonable effort to ensure field remedies will not adversely affect performance and/or safety of the unit. This field remedy is not intended to extend to future performance of this RV, or any of its materials, components or parts beyond the standard warranty period. The RV owner's obligation to notify Jayco, or one of its independent, authorized dealers, of a claimed defect does not modify any obligation placed on the RV owner to contact Jayco directly when attempting to pursue remedies under state or federal law.*

903 South Main Street • P.O. Box 460 • Middlebury, IN 46540