



Technical Service Bulletin

GROUP BODY ELECTRICAL	NUMBER 23-BE-005G
DATE JULY 2023	MODEL(S) GV60 (JW1)

SUBJECT: IAU LOGIC – SOFTWARE ENHANCEMENT (OTA)

NOTICE

Over-the-Air (OTA) software updates use wireless communication to deliver the latest software directly to the vehicle. As an update becomes available, the software can be deployed over the air and installation initiated by the customer. Refer to TSB # 23-GI-211G for OTA general information.

Description: OTA is intended to be performed by the customer within the vehicle. Only if OTA fails, proceed with the GDS Manual Update outlined within this TSB. This procedure updates the software related to the Identity Authentication Unit (IAU) for GV60 vehicles to update the Google Pixel Key feature, enhance facial recognition and enhance door unlock response.

Applicable Vehicles: 2023MY and 2024MY GV60 (JW1) vehicles.

- Advanced Trim includes Event #1006 **only**.
- Performance Trim includes both, Event #1006 & Event #987.

Warranty Information:

Model	Op. Code	Operation	Op. Time	Causal Part	Nature Code	Cause Code
GV60 (JW1)	95590F00	IAU Upgrade	0.4 M/H	95590-CU000 (Unit 1)	114	ZZ3
				95590-CU010 (Unit 1)		
				95590-CU000 (Unit 5)		
				95590-CU010 (Unit 5)		

- NOTE 1:** Normal warranty applies.
- NOTE 2:** If a part is found in need of replacement while performing this TSB and the affected part is still under warranty, submit a separate claim using the same Repair Order. If the affected part is out of warranty submit a Prior Approval Request for goodwill consideration prior to performing the work.
- NOTE 3:** Op times include VIN, Mileage, and photo capture. Refer to latest warranty policy for digital documentation requirements.

GDS Information:

EVENT INFORMATION

MODEL	EVENT DESCRIPTION
GV60 (JW1)	#1006.JW1 IAU (USER AUTHENTICATION SYSTEM) LOGIC IMPROVEMENT (UNIT1)
	#987.JW1 IAU (DIGITAL KEY) LOGIC IMPROVEMENT (UNIT5)

ROM ID INFORMATION TABLE:

MODEL	OLD		NEW
	P/NO	ROM ID	ROM ID
GV60 (JW1)	95590-CU000 (Unit 1)	1.04	1.09
		1.06	
		1.07	
	95590-CU010 (Unit 1)	1.04	1.09
		1.06	
		1.07	
	95590-CU000 (Unit 5)	1.01	1.03
		1.02	
	95590-CU010 (Unit 5)	1.01	1.03
		1.02	

SERVICE PROCEDURE:

 **CAUTION**
Cautions During Control Unit Upgrade

- Confirm the vehicle's 12V aux. battery is fully charged. Please connect a battery charger before proceeding to eliminate risk of software update failure due to insufficient battery voltage.
- Turn off all lamps (Do not leave head lamp switch in auto mode) and all accessories (heater, A/C, blower, radio, seat warmer, defroster, etc.); do not allow the battery to be discharged during upgrade.
- Perform upgrade with the ignition switch in the ON position.
- Be careful not to disconnect any cables connected to the vehicle or scan tool during upgrade.
- Do not start the engine during upgrade.
- Do not turn off the ignition switch during upgrade.
- Do not touch the systems buttons (like 'BACK', 'HOME', 'etc.') while performing upgrade.

■ CONTROL UNIT UPGRADE PROCEDURE USING THE GDS-Mobile/GDS Smart

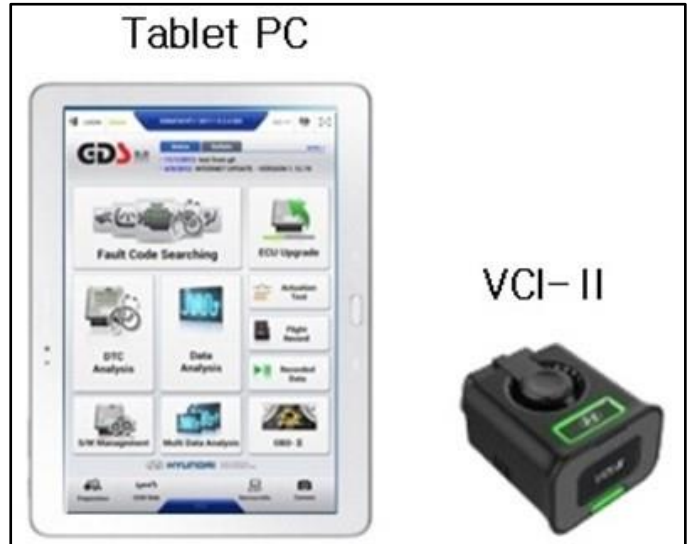
1. GDS (Global Diagnostic System)-Mobile / GDS Smart INSTALLATION PROCEDURE

1. Connect the VCI-II into the vehicle's DLC connector under the driver side instrument panel and check to turn the VCI-II on.

Before starting the update, make certain that the battery of the Table PC is sufficiently charged.

NOTICE

ECU upgrade function on GDS-Mobile is basically operating in wireless communication and Wi-Fi direct. Also, it's possible to be performing via USB cable between Tablet PC and VCI-II.



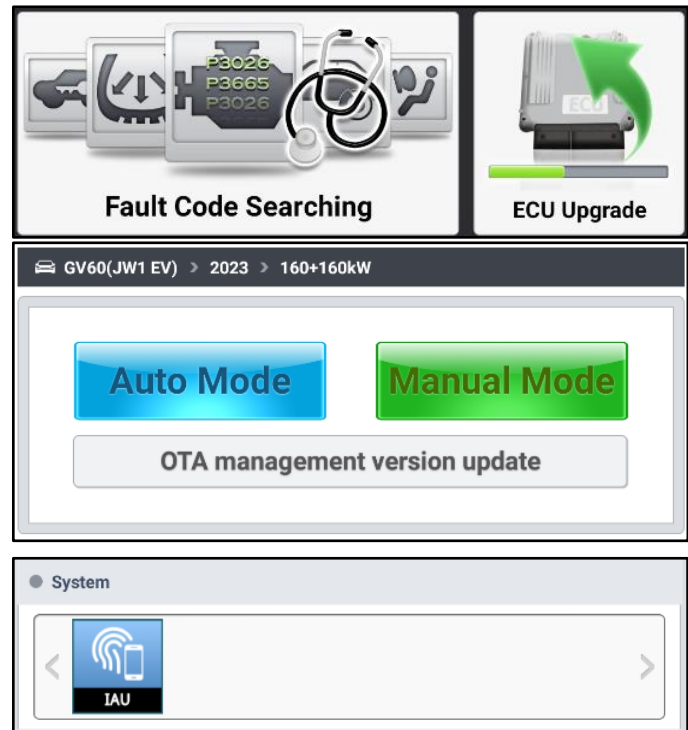
2. MANUAL UPGRADE PROCEDURE USING GDS-MOBILE/GDS Smart

NOTE:

- Technician must look up the IAU part number prior to GDS Update.
- Update can only be done in **Manual Mode**.
- If upgrade fails, please remove the power connector from the battery (-) terminal for at least 30 seconds and reassemble it to retry the upgrade.
- After upgrade is completed, the OTA initialization process must be carried out (Steps19-22).

1. On the GDS Home Screen, select **ECU Upgrade**.

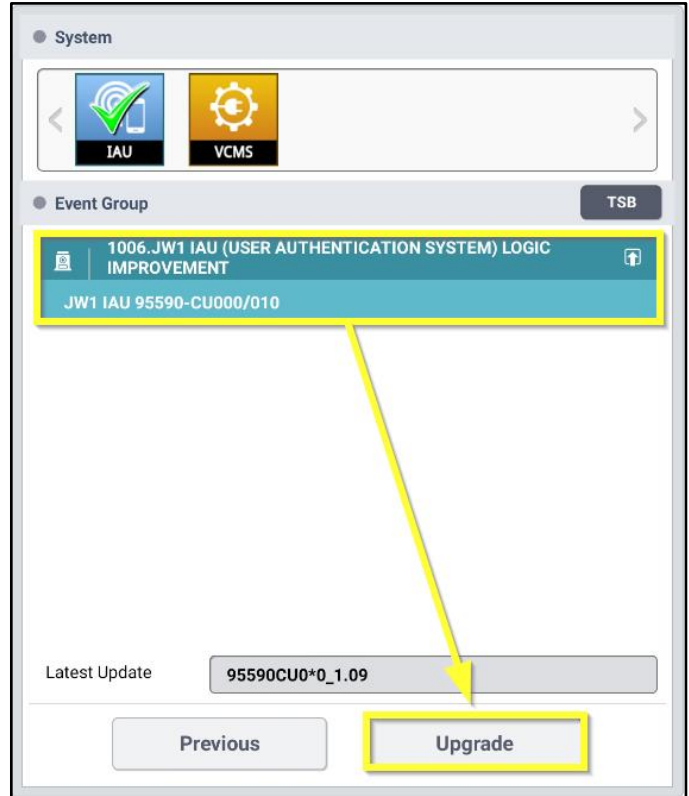
Within the upgrade screen, select **Manual Mode**.



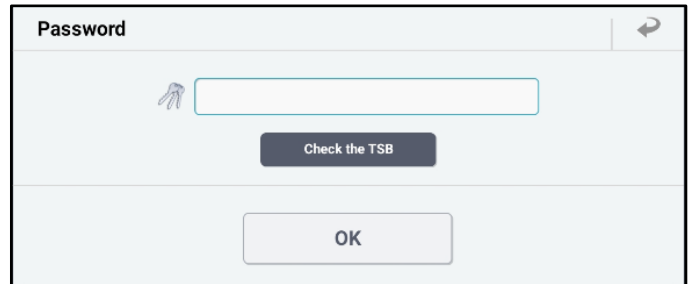
2. Under System, select **IAU** to generate the Event Group.

- After selected, Event group will display for #1006.

Confirm the ROM ID is correct from the Information Table listed above and proceed with **Upgrade**.



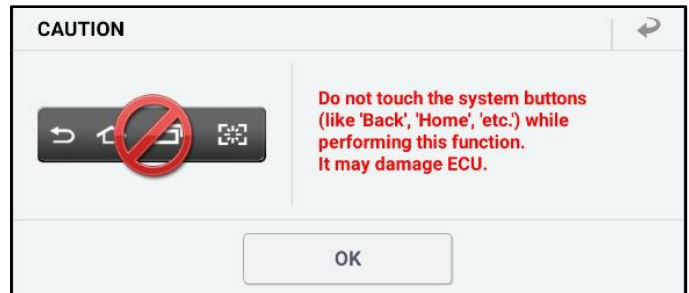
- Enter the password from the below table then touch OK.



#1006.JW1 IAU (USER AUTHENTICATION SYSTEM) LOGIC IMPROVEMENT (UNIT1)

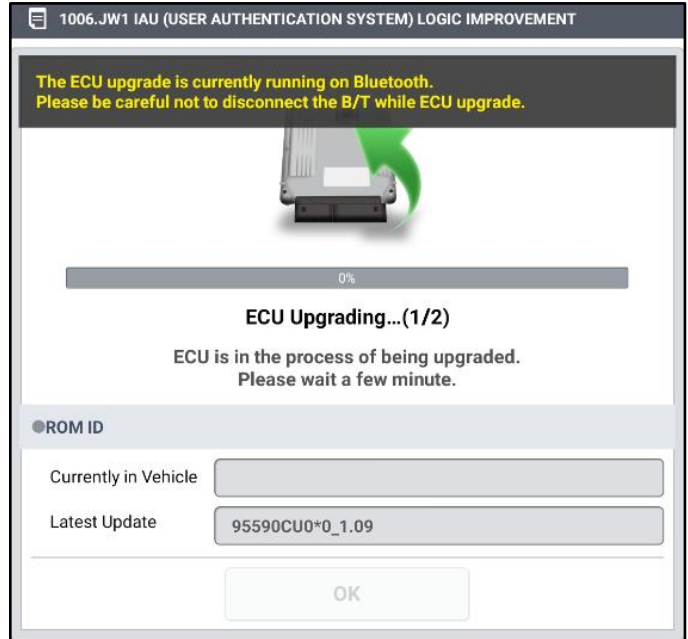
MENU	PASSWORD
JW1 IAU 95590-CU000	3509
JW1 IAU 95590-CU010	3509

- Select **OK** after the CAUTION message.



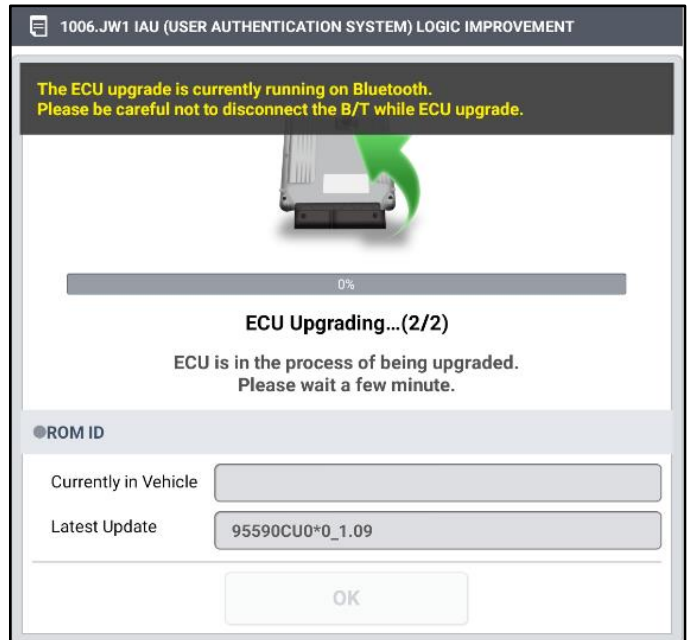
- 6. Upgrade (1/2) will begin and the progress of the upgrade will appear on the bar graph.

Upgrade (1/2) will occur until 100% is reached on the bar graph.



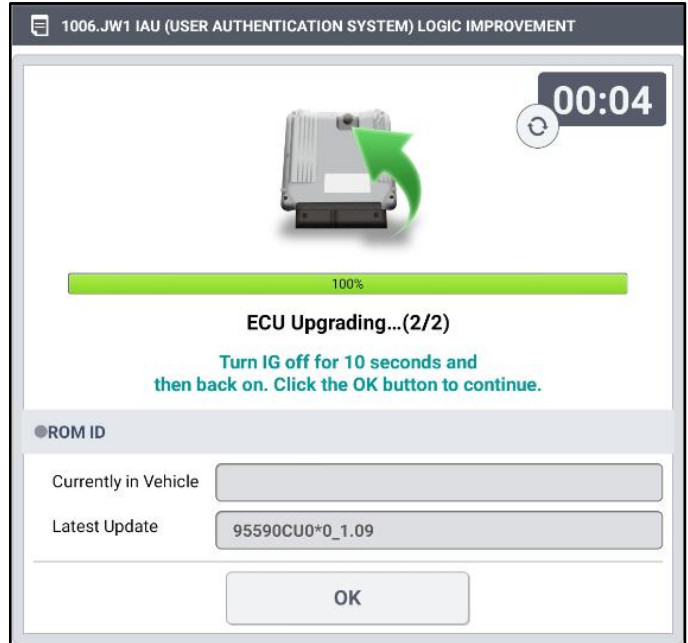
- 7. Upgrade (2/2) will begin and the progress of the upgrade will appear in the bar graph.

Upgrade (2/2) will occur until 100% is reached on the bar graph. Turn the vehicle off for 10 seconds by pressing the Start/Stop button, place it back in the key on position and then tab OK to continue according to information displayed on the screen.

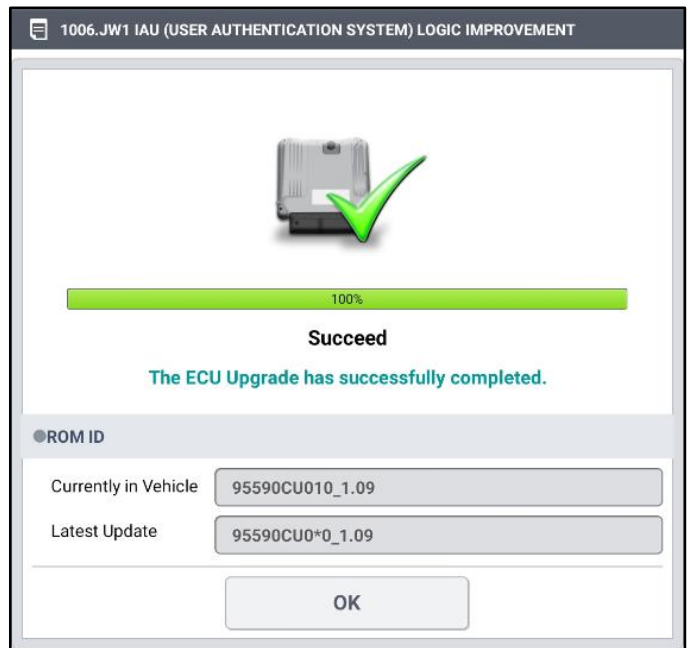


8. Follow the instructions on the screen and turn IG off for 10 seconds.

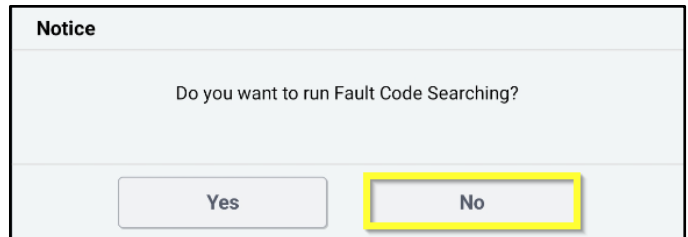
After completing, select OK.



9. After receiving **Succeed**, select OK.



10. Select **No** when Notice is updated.

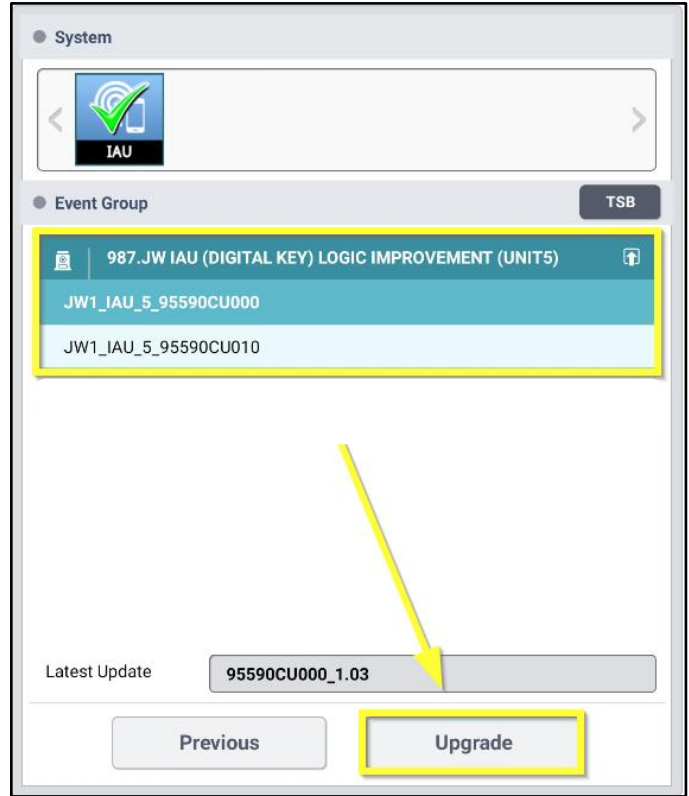


11. Return to the system page and **complete Event #987**.

Select the vehicle’s part number, followed with **Upgrade**.

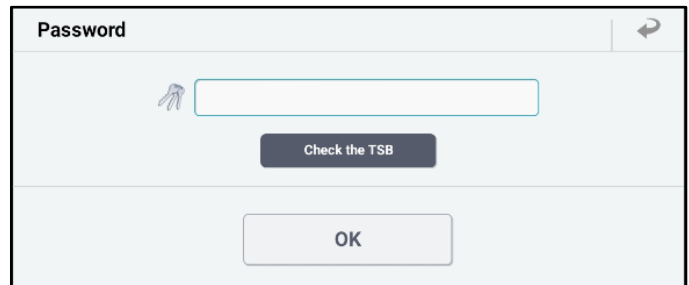
NOTICE

Please note that #987 only needs to be completed for vehicles with Performance Trim.



12. Enter the password from the below table then touch OK.

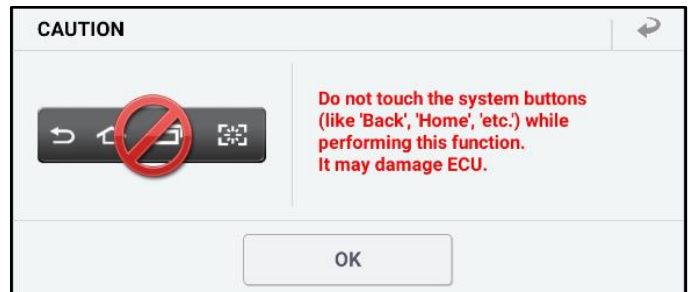
Enter password in respect to the Part Number.



#987.JW1 IAU (DIGITAL KEY) LOGIC IMPROVEMENT (UNIT5)

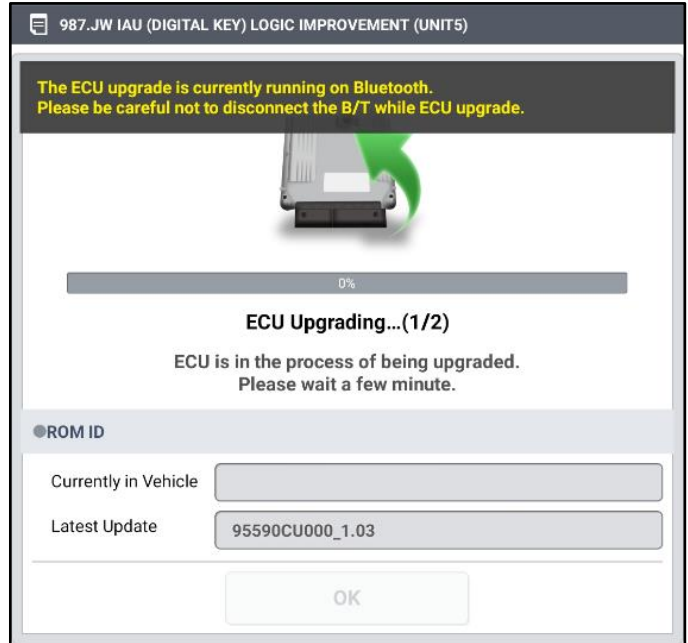
MENU	PASSWORD
JW1_IAU_5_95590CU000	0722
JW1_IAU_5_95590CU010	0489

13. Select **OK** after the CAUTION message.



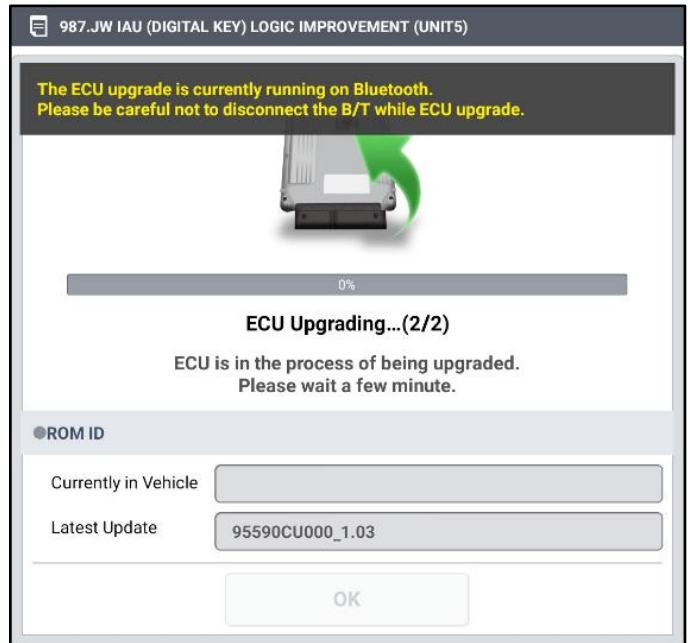
14. Upgrade (1/2) will begin and the progress of the upgrade will appear on the bar graph.

Upgrade (1/2) will occur until 100% is reached on the bar graph.



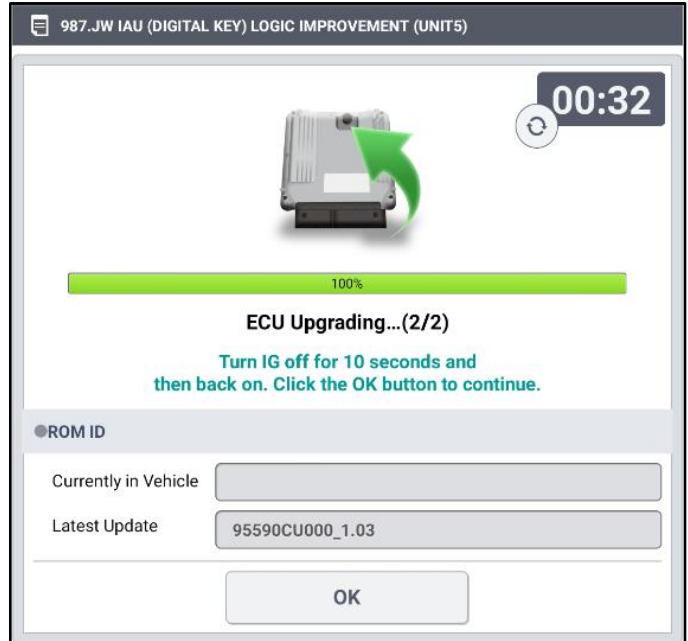
15. Upgrade (2/2) will begin and the progress of the upgrade will appear in the bar graph.

Upgrade (2/2) will occur until 100% is reached on the bar graph. Turn the vehicle off for 10 seconds by pressing the Start/Stop button, place it back in the key on position and then tab OK to continue according to information displayed on the screen.

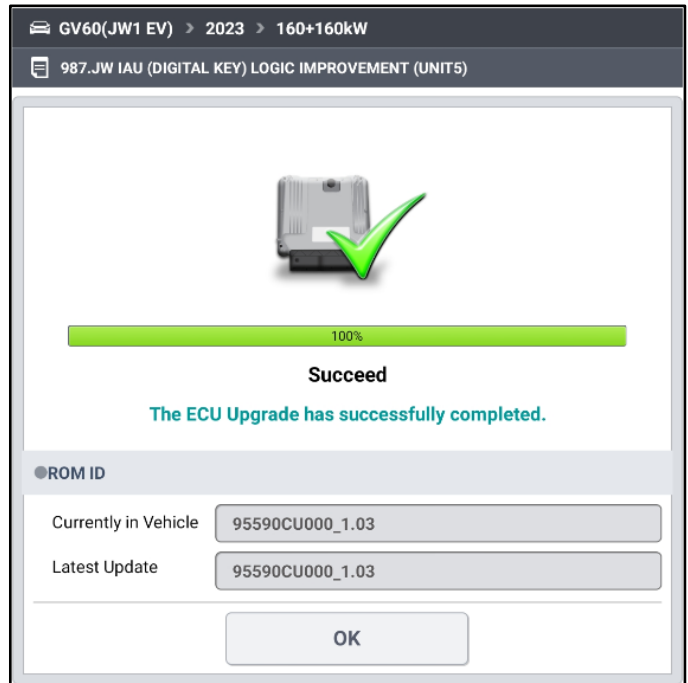


16. Follow the instructions on the screen and turn IG off for 10 seconds.

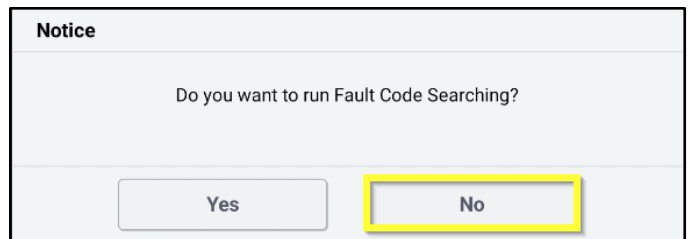
After completing, select OK.



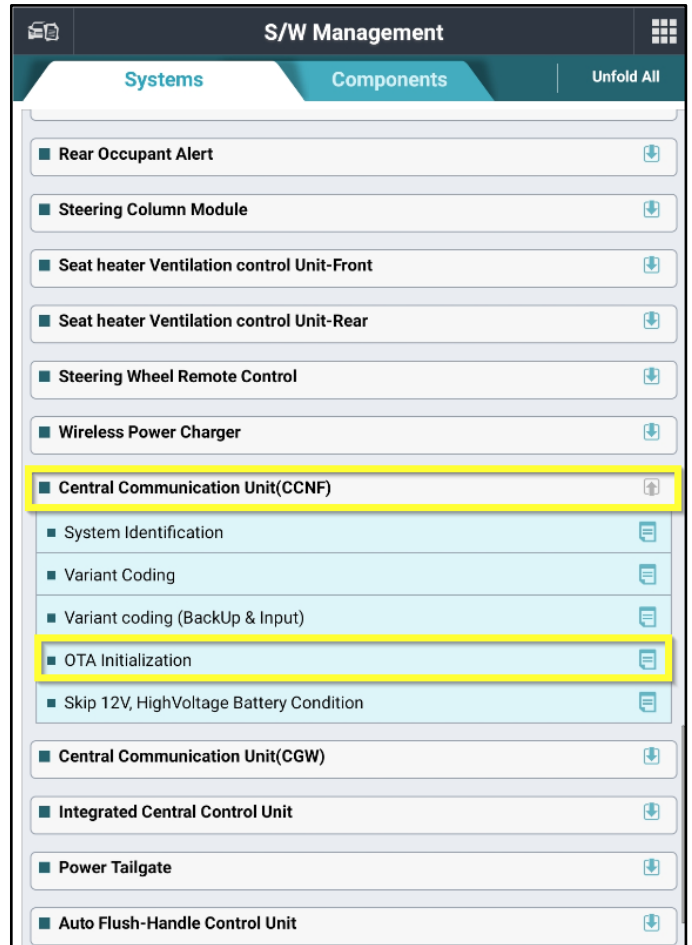
17. After receiving **Succeed**, select OK.



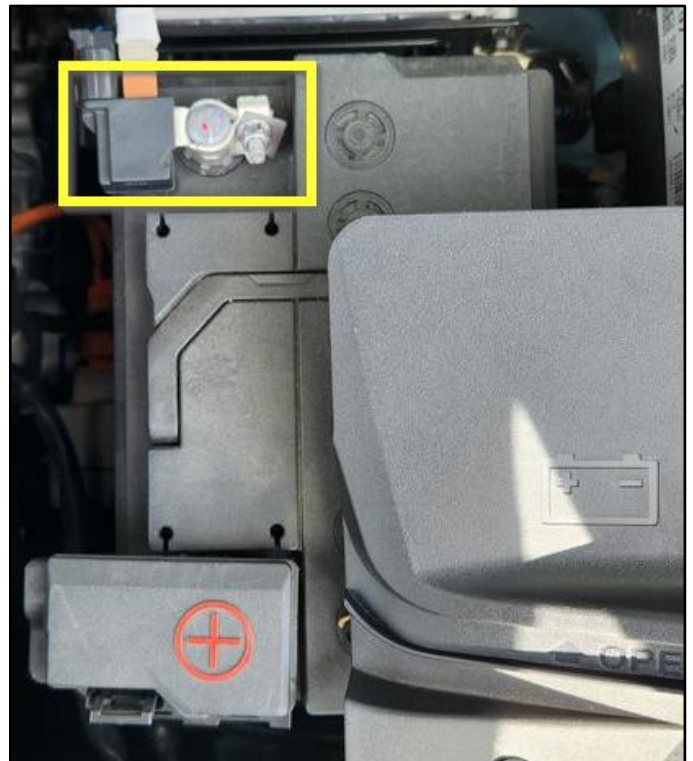
18. Select **No** when Notice is updated.



19. After the upgrade is completed, **the OTA initialization process must be carried out.**
- Connect the GDS-M
 - Select S/W Management
 - Go to Central Communication Unit (CCNF)
 - Select OTA Initialization
 - Follow the instructions on the screen



20. After the OTA Initialization process is complete, disconnect the negative (-) auxiliary battery terminal for at least 30 seconds, then reconnect the terminal.



21. Check if any incidental Diagnostic Trouble Codes (DTC) have been created by the upgrade and clear the DTC(s) present.
 - a. Connect the GDS-M
 - b. Check for Diagnostic Trouble Codes in All Systems
 - c. Erase any DTCs

22. Go to READY mode by depressing the brake pedal and pressing the Start/ Stop button to **confirm proper operation of the vehicle.**