

REFERENCE:	TSB: 23-054-23 GROUP 23 - Body	Date:	May 13, 2023	REVISION:	23-040-22
VEHICLES AFFECTED:	2021 - **2023** (M1) Jeep Compass This bulletin applies to vehicles built on or after March 01, 2022 (MDH 0301XX) and on or before **April 21, 2023 (MDH 0421XX)** equipped with Branco Polar Paint (Sales Code PWA).	MARKET APPLICABILITY:			
CUSTOMER SYMPTOM:	The customers may complain about paint peeling on the front bumper on vehicles with polar white color paint.				
CAUSE:	Peeling paint in specific areas on the front bumper.				

This bulletin supersedes Technical Service Bulletin (TSB) 23-040-22, date of issue October 08, 2022, which should be removed from your files. All revisions are highlighted with ****asterisks**** and include a new Rapid Service Update (RSU) number, model year, build date and LOP.

This Technical Service Bulletin (TSB) has also been released as a Rapid Service Update (RSU) ****23-141, date of issue May 13, 2023****. All applicable RSU VINs have been loaded. To verify this RSU service action is applicable to the vehicle, use VIP or perform a VIN search in DealerCONNECT/Service Library. All repairs are reimbursable within the provisions of warranty. This RSU will expire 18 months after the date of issue.

REPAIR SUMMARY:

This bulletin involves repainting the area of the front bumper that is peeling.

CLAIMS DATA:

Labor Operation No:	Labor Description	Skill Category	Labor Time
**23-60-01-13	Repaint Front bumper - Inspect (1 - Semi Skilled)	6 - Electrical and Body Systems	0.2 Hrs.
23-60-01-14	Repaint Front bumper - Inspect And Repaint (One side) (1 - Semi Skilled)	6 - Electrical and Body Systems	0.9 Hrs.
23-60-01-15	Repaint Front bumper - Inspect And Repaint Both sides) (1 - Semi Skilled)	6 - Electrical and Body Systems	1.5 Hrs.**
	ZZ	Service Action	

RELATED TIME ALLOWANCE:

23-60-01-08	Front Bumper Panel Area- Paint Prep Labor Time	12 - Body Repair	0.9 Hrs.
-------------	--	------------------	----------

SPARE PARTS:

Qty	Part No.	Description	Notes
3	68422151AA	Paint 50 ML	One side
3	68422150AA	Varnish 50 ML	One side
6	68422151AA	Paint 50 ML	Both sides
6	68422150AA	Varnish 50 ML	Both sides

DIAGNOSIS:

Using a Scan Tool (wiTECH) with the appropriate Diagnostic Procedures available in DealerCONNECT/ Service Library, verify all related systems are functioning as designed. If DTCs or symptom conditions, other than the ones listed above are present, record the issues on the repair order and repair as necessary before proceeding further with this bulletin.

If a customer's VIN is listed in VIP or your RSU VIN list, perform the repair. **This bulletin applies to vehicles on the RSU VIN list only.**

1. Check for paint peeling between front bumper and fenders (Fig. 1) .



Fig. 1
Paint Peeling

2. Is there peeling between the front bumper and the fenders (Fig. 1) ?
 - YES>>> Proceed to [Step 1](#) of the Repair Procedure.
 - NO>>> This bulletin has been completed, use inspect LOP (23-60-01-13) to close the active RSU.

REPAIR PROCEDURE:

1. Remove one or both sides of the front bumper (Fig. 2) . Refer to the detailed service procedures available in DealerCONNECT > Service Library under: 13 - Frame and Bumpers / Bumpers / Fascia, Front / Removal.



Fig. 2
Front Fascia to be Repaired

2. Identify the peeling area on the front bumper (Fig. 3) .

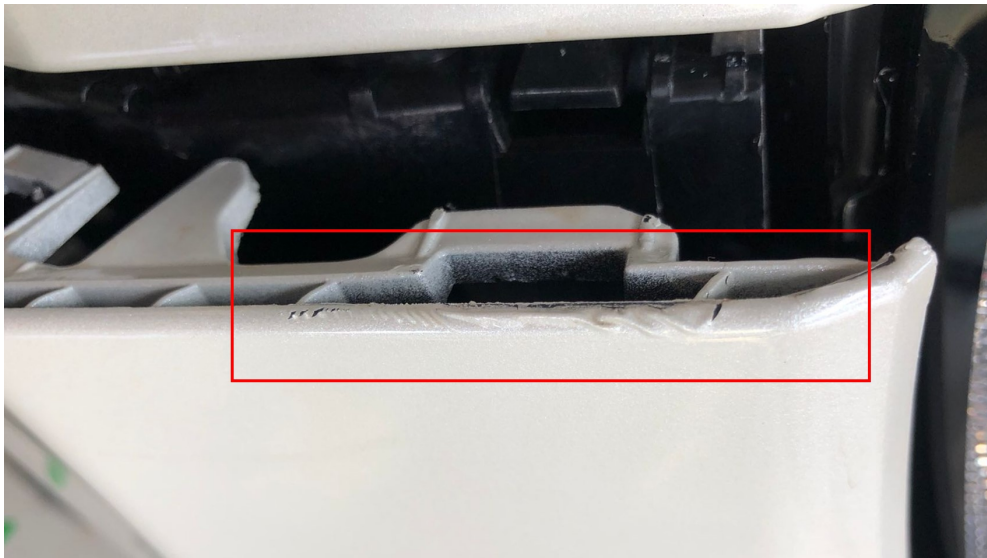


Fig. 3
Peeling Paint to be Sanded

3. Sand the area with the peeling paint until it is completely removed (Fig. 4) .



Fig. 4
Sanded Area

4. Clean the entire surface of the sanded area of the front bumper.
5. Isolate and tape off the whole region protecting the parts that will not be painted in the process (Fig. 5) .



Fig. 5
Taped Off Area to be Painted

6. Apply a thin coat of primer over the sanded area. Respect the curing time according to the product specifications (Fig. 6) .



Fig. 6
Prepped for Paint

7. Prepare the paint and varnish in the ideal proportions according to the manufacturer. Test first in an appropriate place to check the color tone of the paint.
Determine which type of basecoat will be used solvent or waterborne based.

Solvent Basecoat Procedure:

- If using solvent basecoat procedure, paint the repaired area accordingly.
- Refer to the approved refinish paint suppliers (Akzo Nobel, Axalta, BASF, PPG, SherwinWilliams and Valspar) recommended process for cleaning the primed surface area.
- Apply DAS302X sealer or equivalent.
- Apply DBC basecoat with DX57 hardener or equivalent.
- Apply DC4000 clearcoat with SL814 universal flexibilizer or equivalent.

Waterborne Basecoat Procedure:

- If using waterborne basecoat procedure, paint the repaired area accordingly.
- Refer to the approved refinish paint suppliers (Akzo Nobel, Axalta, BASF, PPG, SherwinWilliams and Valspar) recommended process for cleaning the primed surface area.
- Apply ECS2X sealer or equivalent.
- Apply EHP basecoat with T492 and T581 hardener or equivalent.
- Apply DC4000 clearcoat with SL814 universal flexibilizer or equivalent.

8. Apply a thin coat of paint over the surface of the front bumper that has been sanded and primed. Respect the curing time according to the product specifications (Fig. 7) .



Fig. 7
Painted Area

9. Remove the protections from the paint area.
10. Install one or both sides of the front bumper. Refer to the detailed service procedures available in DealerCONNECT > Service Library under: 13 - Frame and Bumpers / Bumpers / Fascia, Front / Installation.

POLICY:

Reimbursable within the provisions of the warranty.

This bulletin is supplied as technical information only and is not an authorization for repair. No part of this publication may be reproduced, stored in a retrieval system, or transmitted, in any form or by any means, electronic, mechanical, photocopying, or otherwise, without written permission of FCA US LLC.