

Technical Service Bulletin (TSB)
Lower Day Light Opening or B-Pillar Moldings Have a Poor Fit or are Loose

| | | | | | |
|---------------------------|---|--------------|--------------|---|---|
| REFERENCE: | TSB: 23-053-23 GROUP 23 - Body | Date: | May 13, 2023 | REVISION: | - |
| VEHICLES AFFECTED: | 2022 - 2023 (WS) Grand Wagoneer/Wagoneer This bulletin applies to vehicles built: <ul style="list-style-type: none"> On or before November 07, 2022 (MDH 1107XX) covering lower day light opening moldings have a poor fit to door glass, On or after March 03, 2023 (MDH 0303XX) and on or before March 06, 2023 (MDH 0306XX) covering loose door trim at the B-pillar, equipped with Window Mldg-Polished Stainless Steel (Sales Code MDR) or UPR And LWR DLO Mldg - Gloss Black (Sales Code MMR). | | | MARKET APPLICABILITY: <input checked="" type="checkbox"/> NA <input type="checkbox"/> CH <input type="checkbox"/> EE <input type="checkbox"/> IAP <input type="checkbox"/> SA <input checked="" type="checkbox"/> MEA | |
| CUSTOMER SYMPTOM: | <ul style="list-style-type: none"> One or more, lower day light opening moldings (lower belt line molding) have a poor fit to door glass and/or a wavy appearance. Minor wind noise coming from one or more doors. Front door trim is loose at the B-pillar. | | | | |
| CAUSE: | Defective moldings. | | | | |

This Technical Service Bulletin (TSB) has also been released as a Rapid Service Update (RSU) 23-140, date of issue May 13, 2023. All applicable RSU VINs have been loaded. To verify this RSU service action is applicable to the vehicle, use VIP or perform a VIN search in DealerCONNECT/ Service Library. All repairs are reimbursable within the provisions of warranty. This RSU will expire 18 months after the date of issue.

REPAIR SUMMARY:

This bulletin involves inspecting all four lower day light opening moldings (lower door belt line) or inspecting the both the left and right front door belt moldings at the B-pillar for looseness and possibly replacing one or more moldings.

CLAIMS DATA:

| Labor Operation No: | Labor Description | Skill Category | Labor Time |
|---------------------|--|---------------------------------|------------|
| 23-51-16-9E | Molding, Lower Day Light Opening - Inspect Four Doors (0 - Introduction) | 6 - Electrical and Body Systems | 0.2 Hrs. |
| 23-51-16-9F | Molding, Lower Day Light Opening - Inspect and Replace One Front Door (0 - Introduction) | 6 - Electrical and Body Systems | 0.5 Hrs. |
| 23-51-16-9G | Molding, Lower Day Light Opening - Inspect and Replace Both Front Doors (0 - Introduction) | 6 - Electrical and Body Systems | 0.8 Hrs. |

| Labor Operation No: | Labor Description | Skill Category | Labor Time |
|---------------------|--|---------------------------------|------------|
| 23-51-16-9H | Molding, Lower Day Light Opening - Inspect and Replace One Rear Door (0 - Introduction) | 6 - Electrical and Body Systems | 0.4 Hrs. |
| 23-51-16-9J | Molding, Lower Day Light Opening - Inspect and Replace Both Rear Doors (0 - Introduction) | 6 - Electrical and Body Systems | 0.6 Hrs. |
| Failure Code | ZZ | Service Action | |

SPARE PARTS:

| Qty | Part No. | Description | Notes |
|--------|------------|---|------------------------------|
| 1 (AR) | 68406308AH | Molding, Day Light Opening - Right Front Door | Bright (Sales Code MDR) |
| 1 (AR) | 68406309AH | Molding, Day Light Opening - Left Front Door | Bright (Sales Code MDR) |
| 1 (AR) | 68406390AG | Molding, Day Light Opening - Right Rear Door | Bright (Sales Code MDR) |
| 1 (AR) | 68406391AG | Molding, Day Light Opening - Left Rear Door | Bright (Sales Code MDR) |
| 1 (AR) | 68534264AH | Molding, Day Light Opening - Right Front Door | Gloss Black (Sales Code MMR) |
| 1 (AR) | 68534265AH | Molding, Day Light Opening - Left Front Door | Gloss Black (Sales Code MMR) |
| 1 (AR) | 68534268AG | Molding, Day Light Opening - Right Rear Door | Gloss Black (Sales Code MMR) |
| 1 (AR) | 68534269AG | Molding, Day Light Opening - Left Rear Door | Gloss Black (Sales Code MMR) |

SPECIAL TOOLS/EQUIPMENT:

| Description | Ref. No. | Notes |
|---|------------|----------------|
| Gauges, Clearance Measurement, Non-Metallic | 2022300230 | Essential Tool |

DIAGNOSIS:

If a customer's VIN is listed in VIP or your RSU VIN list, perform the Inspection Procedure. **This RSU only applies to vehicles on the RSU VIN list.**

NOTE: All four lower day light opening moldings need to be measured using a gap gauge. Do not just visually inspect the moldings.

1. Was the vehicle built on or before November 07, 2022?
 - YES>>> Proceed to [Step 2](#).
 - NO>>> Proceed to [Step 4](#).
2. Using a 4 mm (0.157 in.) gap gauge, measure between the lower day light opening molding top edge and the glass surface ([Fig. 1](#)), on all four doors.

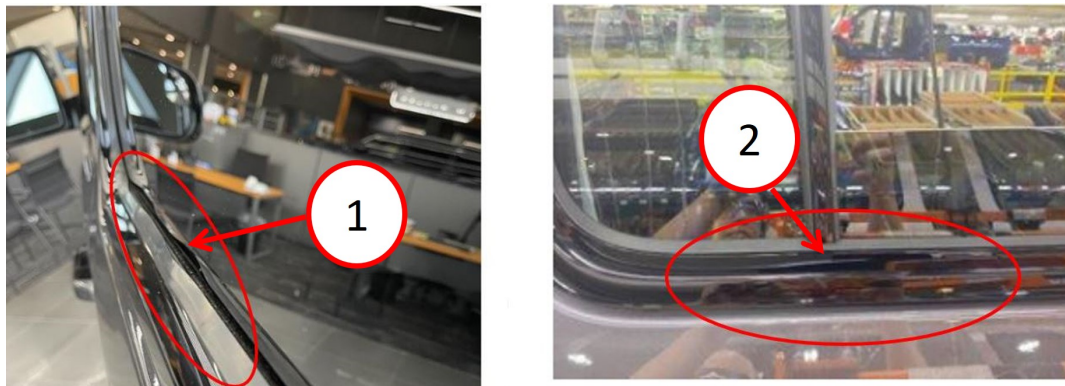


Fig. 1

Lower Day Light Opening Molding Top Edge To Glass Gaps

- 1 - Area To Measure - Front Door Example Gap Shown
- 2 - Area To Measure - Rear Door Example Gap Shown

3. Did one or more, lower day light opening moldings top edge to glass surface, exceed 4 mm (0.157 in.) ([Fig. 1](#)) on any of the four doors?
 - YES>>> Proceed to [Step 1](#) of the Repair Procedure.
 - NO>>> This bulletin has been completed. Use inspect LOP (23-51-16-9E) to close the active RSU.
4. Was the vehicle built on or after March 03, 2023 and on or before March 06, 2023?
 - YES>>> Proceed to [Step 5](#).
 - NO>>> This bulletin does not apply.
5. Lower both front door windows all the way down.

6. Using a 5 mm (0.19 in.) gap gauge, inspect both the left and right front lower day light opening molding at the B-pillar and verify if properly seated to the door frame (Fig. 2) . Moldings should not move away from the door frame at the B-pillar (Fig. 2) more than 5 mm (0.19 in.).



Fig. 2

Molding Area To Measure At B-Pillar

7. Did either the left and right front lower day light opening moldings move away from the door frame (Fig. 2) more than 5 mm (0.19 in.) at the B-pillar?
- YES>>> Push the molding into the door frame to try to re-seat the molding clip. If it will not re-seat, proceed to [Step 1](#) of the Repair Procedure.
 - NO>>> This bulletin has been completed. Use inspect LOP (23-51-16-9E) to close the active RSU.

REPAIR PROCEDURE:

NOTE: Only replace the lower day light opening molding(s) that are required.

1. Replace the lower day light opening molding(s), as required. Refer to the detailed service procedures available in DealerCONNECT> Service Library under: Service Info>23 - Body / Doors - Front / Molding / Removal and Installation **OR** Refer to the detailed service procedures available in DealerCONNECT> Service Library under: Service Info>23 - Body / Doors - Rear / Molding / Removal and Installation.

POLICY:

Reimbursable within the provisions of the warranty.

This bulletin is supplied as technical information only and is not an authorization for repair. No part of this publication may be reproduced, stored in a retrieval system, or transmitted, in any form or by any means, electronic, mechanical, photocopying, or otherwise, without written permission of FCA US LLC.