

MAS003623 RU 23-22

RAPID UPDATE

FROM: Maserati TSO
TO: Maserati Network



PERSONAL SERVICE LAB

MASTERS OF CARE

Rapid Update 631 Granturismo – Eyelet terminal check



DATE: JUNE 7 2023

Certain Maserati Granturismo (M189) MY24 listed in MODISCS+ are involved to check 8 ground points and possibly clean the eyelet terminals.

This action is necessary because of a production drift from the supplier. Some eyelet terminals have excess glue between the wire insulation and terminal preventing a proper clamping of the terminal to the body stud. This can lead to malfunctions in various electrical systems.

We remind you that all Rapid Updates must be performed the first time the vehicle enters the workshop, regardless of the Mandatory setting set in Modis, as required by Maserati policies.

Also, for cars in Stock Dealer/PDI, it is necessary to carry out all campaign operations before delivery to the end customer, as prescribed by the White Book and explicitly reported in the Pre-delivery checklist.

Please read and review this bulletin first before starting the procedure.

Contact your Regional AfterSales Manager (RAM) or the Technical Support Helpdesk if you have any questions. (Maseratitechsupport@maserati.com)

Thank You for your continued support and cooperation.

Maserati Americas
Aftersales Dept.

Overview

 All images shown in this bulletin are for illustrative purposes only

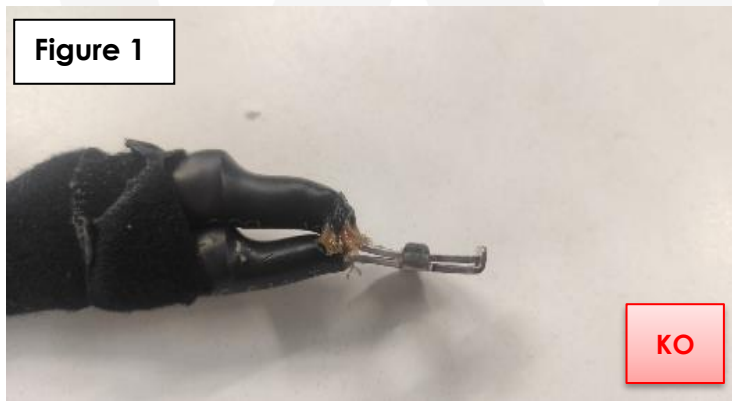
IMPORTANT: On traditional metal terminals, the excess glue used to waterproof the wiring to the terminals is usually eliminated automatically through the applied torque. However, this cannot be achieved with aluminum terminals as they have a lower tightening torque specification (8Nm - Class C). Consequently, it is necessary to manually remove and clean any excess glue on the eyelet terminal. This step is crucial as the excess glue can impede the clamping of the nut and hinder proper contact between the eyelet terminal and the body ground stud surface.

Eyelet terminal configurations:

see below for the 2 possible eyelet configurations

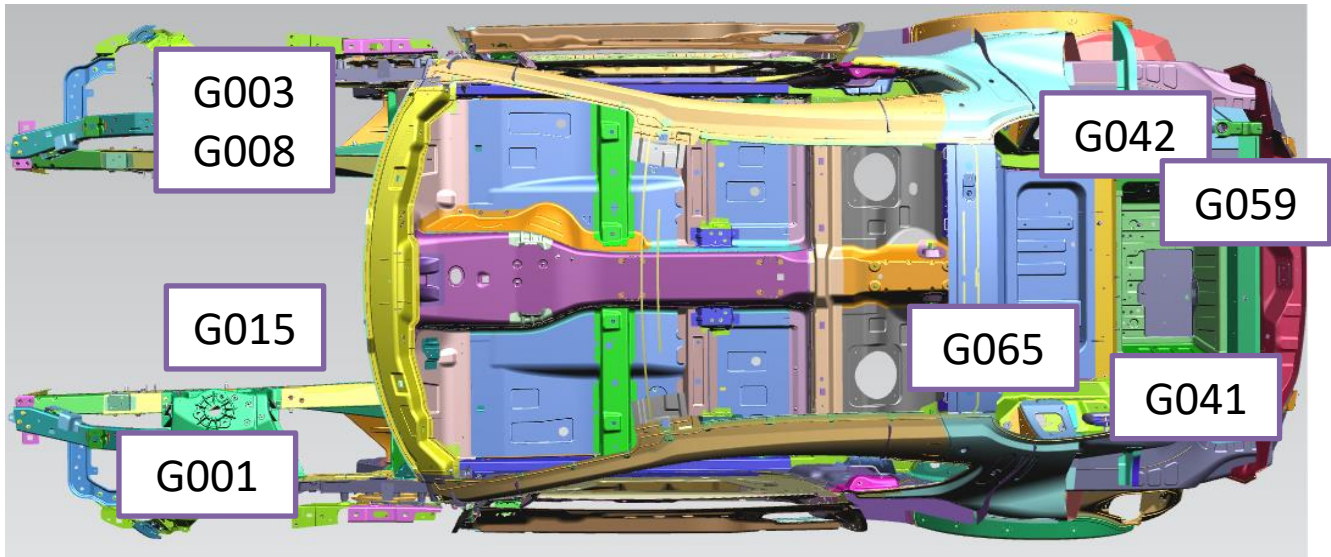
A: Single eyelet terminal: check for the presence of glue covering the eyelet and proceed with the removal according to the cleaning procedure indicated on **page 6** of this bulletin.

B: Double eyelet terminal: in addition to the above check, if excess glue appears between the two eyelets as shown in **Figure 1**, please open a BOL as "SUPPORT REQUEST" attach pictures and await further instructions



Procedure

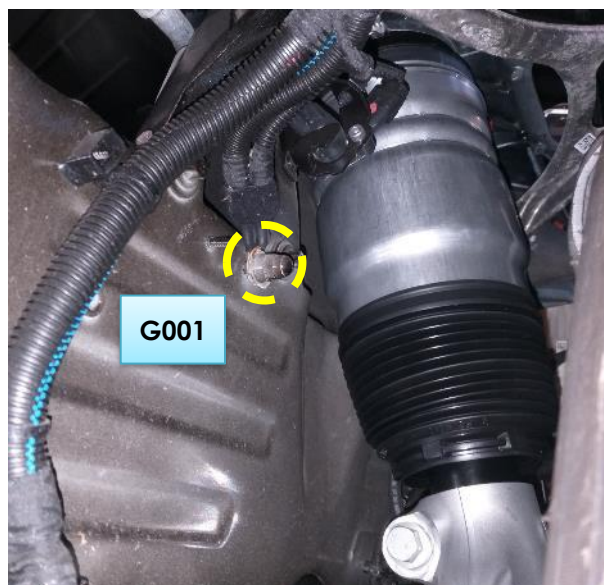
IMPORTANT: The ground points that need to be checked are situated in various areas of the vehicle. The image below provides an overview of all the points affected by the rework. Each individual point will be accompanied by the appropriate procedure to access it effectively.



1. Always check ModisCS+ to see if the vehicle is involved in this action and if it has not been previously performed.
2. Open the rear trunk and remove the battery compartment cover and, if present, the emergency KIT, following the relevant workshop procedures:
 - **9.61.035.0 BATTERY INSPECTION COMPARTMENT LINING Removal/reassembly or replacement**
3. Disconnect the battery by following the relative procedure in the workshop manual:
 - **8.20.001.0 BATTERY Disconnect-Connect Power Supply**

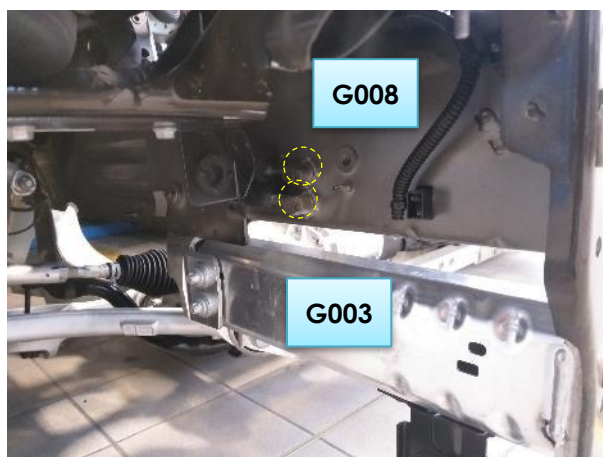
NOTE: Some disassembly is required to prepare the vehicle for the rework. It is advisable to place the vehicle on a lift and remove the various components indicated, via the workshop manual.

- A. **Point G001** → Remove the left front wheel following the procedure indicated:
- **06.00.002 - LEFT FRONT WHEEL RIM - Disassembly and reassembly**



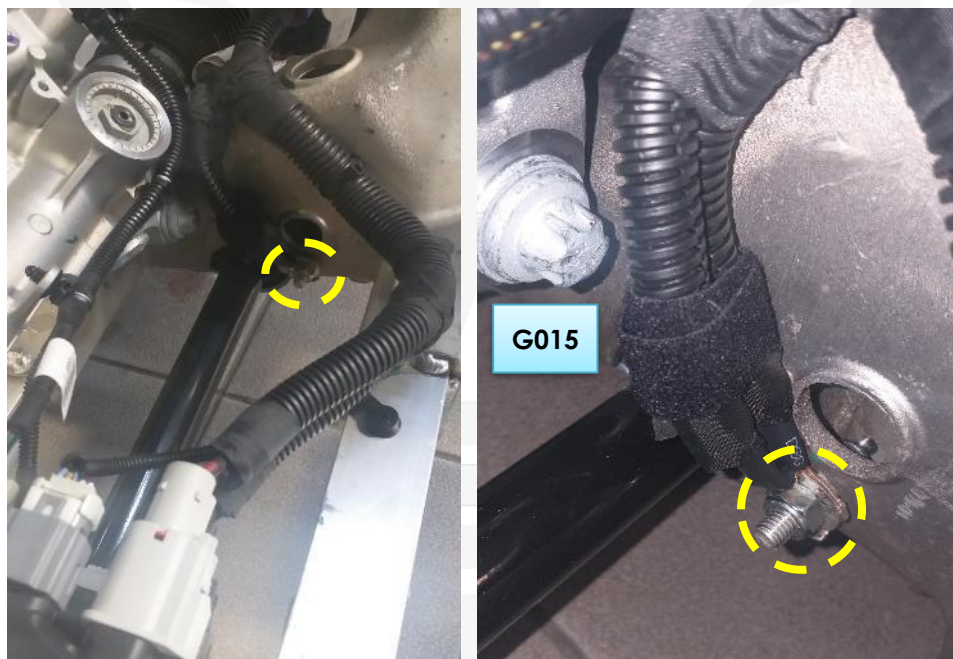
B. **Points G008 and G003** → remove the rear guards in the front wheel compartment area following the procedure indicated:

- 9.14.001 FRONT UNDERBODY GUARD - Removal/refitting or replacement



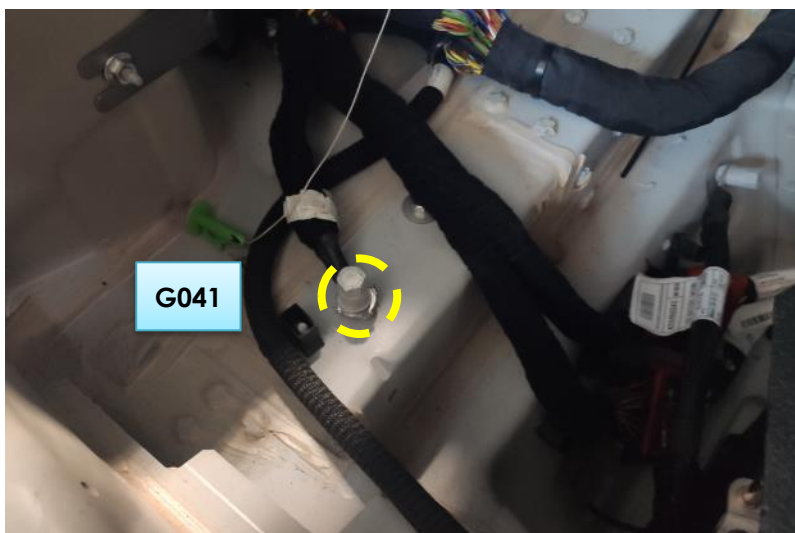
C. **Point G015** → remove the guard under the engine following the procedure indicated:

- 9.14.076 UNDERENGINE GUARD - Removal/refitting or replacement

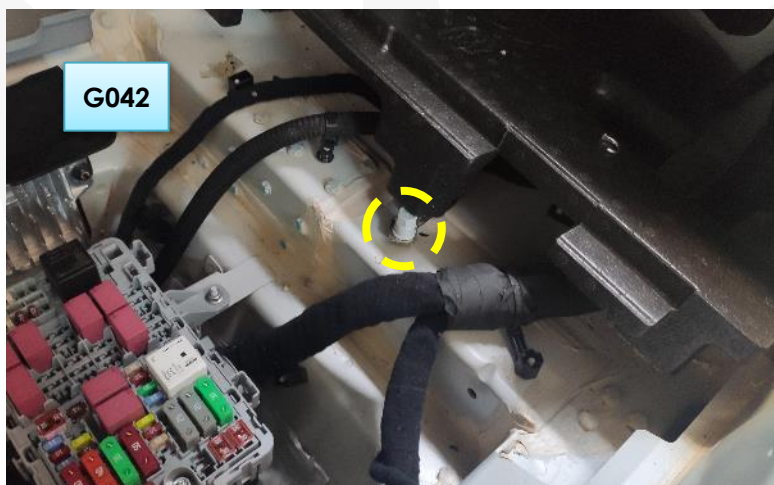


D. **Point G041** → remove the boot compartment left-hand side carpet following the procedure indicated:

- 9.61.006 LEFT SIDE CARPET. TRUNK COMPARTMENT Removal/refitting or replacement



- E. **Point G04 2** → remove the boot compartment right side carpet following the procedure indicated:
- 9.61.005 RIGHT SIDE TRUNK COMPARTMENT CARPET - Removal/refitting or replacement

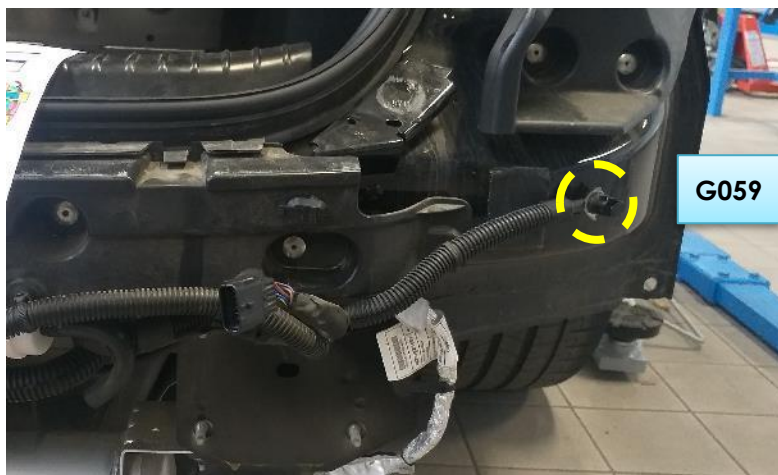


- F. **Point G065** → remove the boot floor covering following the procedure indicated:
- 9.61.034 TRUNK FLOOR COVER - Removal/refitting or replacement



G. **Point G059** → remove the complete rear bumper following the procedure indicated:

- **9.11.001 COMPLETE REAR BUMPER - Removal/refitting or replacement**
-

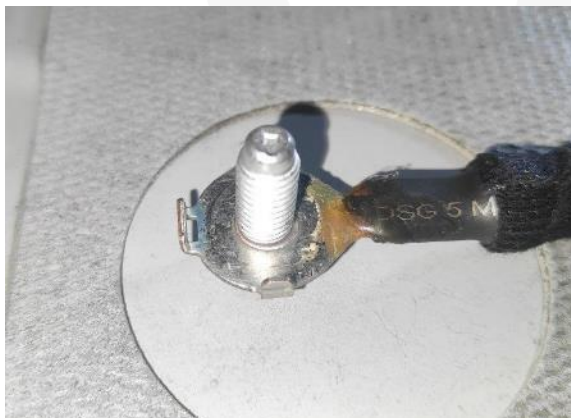


Cleaning procedure

Once every single eyelet terminal has been disassembled, proceed with the cleaning of its surface.

It is advisable to use a clean sharp utility blade to obtain a clean and non-frayed cutting surface.

1. Disengage each individual ground cable from the stud and locate the glue area to be removed.



2. With a utility blade, remove the excess glue covering the eyelet terminal. The cut must be firm, to avoid lifting and tearing of the glue.



3. **IMPORTANT:** Leave a thin line of glue, outside the contact area of the nut, to have protection for the terminal area of the eyelet and to avoid any type of infiltration under the protective sheath.



4. Use a wipe soaked in heptane, such as HEPTANE SOCOSAT 723136811, or a similar cleaner (e.g. isopropyl alcohol) to remove any dirt and proceed with reassembly.

WARNING: Do not torque greater than 8 Nm (eight) to avoid damage to the eyelet terminal.

5. Reassemble all removed components in reverse order following the procedures via the workshop manual.
6. Perform an all-module scan using the EVO to clear any DTCs that may have been set.
7. procedure complete.

Warranty claim

Complete your warranty claim as follows:

Description	Code
Rapid Update Number	631
Guarantee code	23
Error code	063
Component Code	8.60.001
Operation Code <ul style="list-style-type: none"> ▪ Rework 	8.60.001.A (3.00 hours)