



GROUP	MODEL
Voluntary Emissions Service Campaign	2023MY Sportage (NQ5a)
NUMBER	DATE
SC268	July 2023

VOLUNTARY EMISSIONS SERVICE CAMPAIGN

FUEL FILLER NECK VENT COLLAR

SUBJECT:

INSPECTION & REPLACEMENT (SC268)

This bulletin provides information to inspect and, if necessary, replace the fuel filler neck vent collar on certain 2023MY Sportage (NQ5a) vehicles produced from November 17, 2022 through January 18, 2023. The affected vehicles may exhibit a MIL 'ON' with DTC(s) P242200 and/or P242273 due to a partially blocked fuel filler tube vent collar port. Follow the procedure outlined in this publication to inspect and, if necessary, replace the fuel filler neck vent collar. Before conducting the procedure, verify that the vehicle is included in the list of affected VINs.

DTC Description:

P242200 - Evaporative Emission System Vent Valve Stuck Closed

P242273 - Evaporative Emission System Vent Valve Stuck Closed



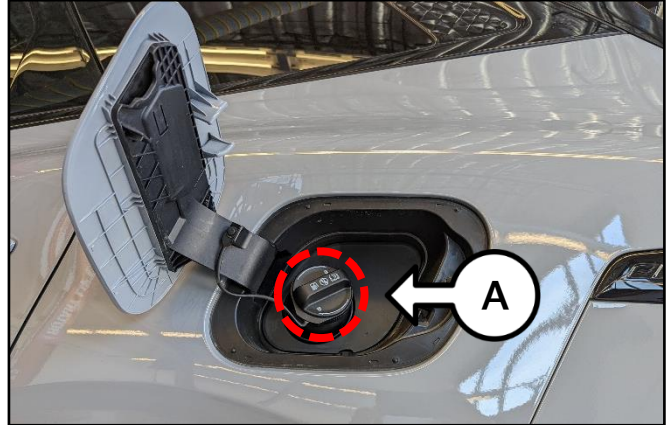
NOTICE

There is no charge to the vehicle owner for this repair. Under applicable law, you may not sell or otherwise deliver any affected vehicle until it has been repaired pursuant to the procedures set forth in this bulletin.

To assure complete customer satisfaction, always remember to refer to KDealer+ Warranty Coverage (validation) Inquiry Screen (Service → Warranty Coverage → Warranty Coverage Inquiry) for a list of any additional campaigns that may need to be performed on the vehicle before returning it to the customer.

Inspection Procedure:

1. Open the fuel filler cap (A).



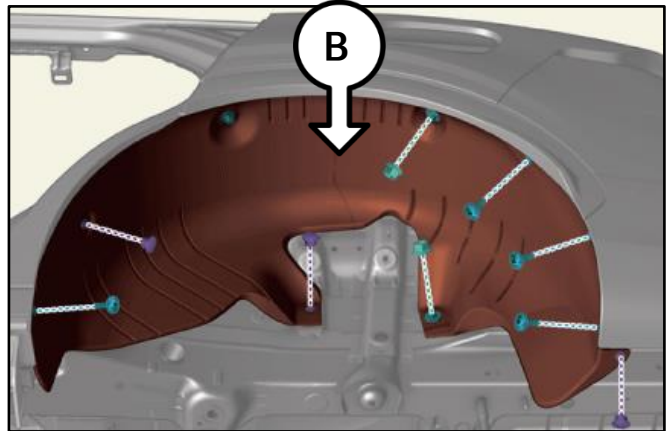
2. Remove the left rear wheel.



Tightening torque for lug nuts:
79.6 - 94.0 lb.ft (107.9 - 127.5 N.m)



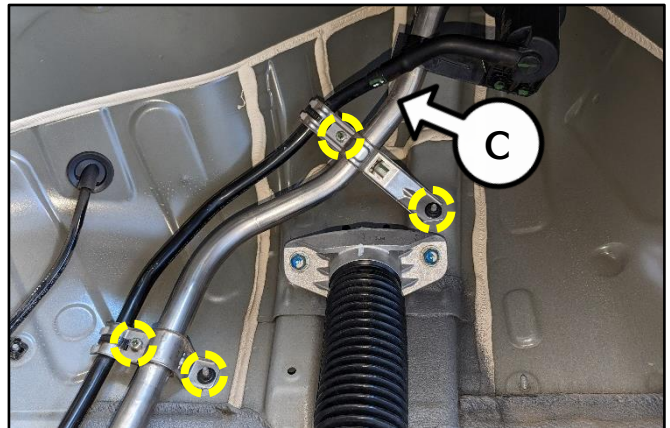
3. Remove the left rear wheel guard (B).



4. Loosen the two (2) bolts and two (2) nuts retaining the fuel filler neck assembly (C).



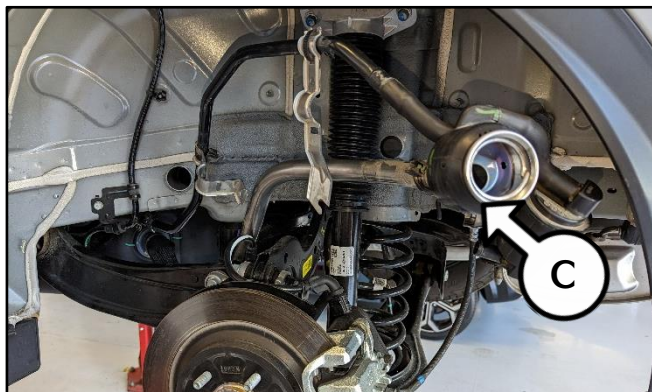
Tightening torque for bolts/nuts:
5.8 - 8.7 lb.ft (7.8 - 11.8 N.m)



SUBJECT:

VENT COLLAR INSPECTION & REPAIR (SC268)

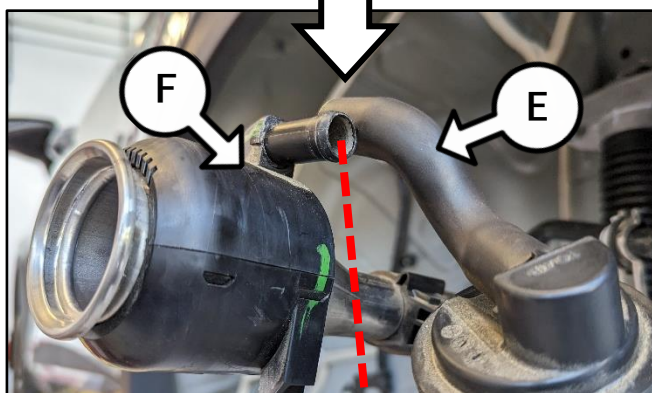
5. Carefully lower the fuel filler neck assembly (C), as shown for access.



6. Detach the fuel tank filter (D) vent hose (E) from the vent collar (F).

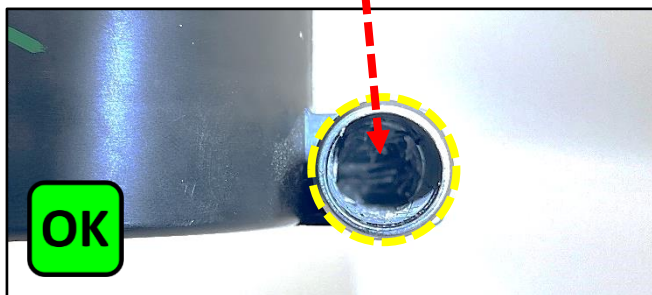
⚠ CAUTION

Do **NOT** twist or rotate the vent collar when removing vent hose (E). Doing so may damage the vent collar.



7. Using a flashlight, inspect the vent collar (F) vent port and confirm the following conditions:

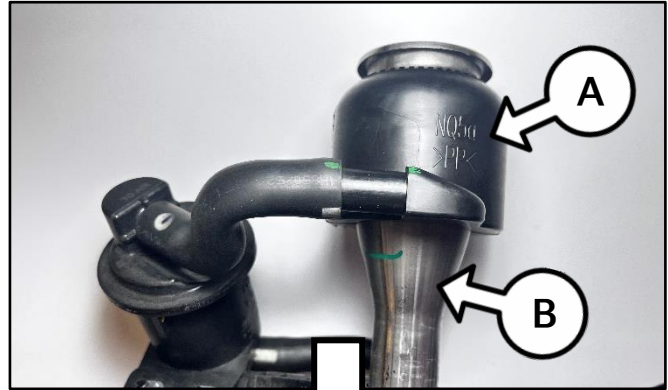
- Vent collar port is **not blocked (OK)**, then reinstall all removed parts in the reverse order of removal to complete this service action.
- Vent collar port is **partially blocked (NG)**, then proceed the 'Repair Procedure' on page 4 to replace the vent collar.



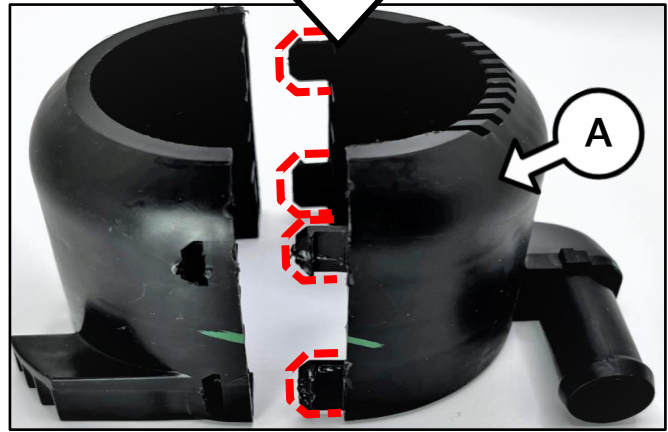
Repair Procedure:

1. Remove the vent collar (A) from the filler neck assembly (B).

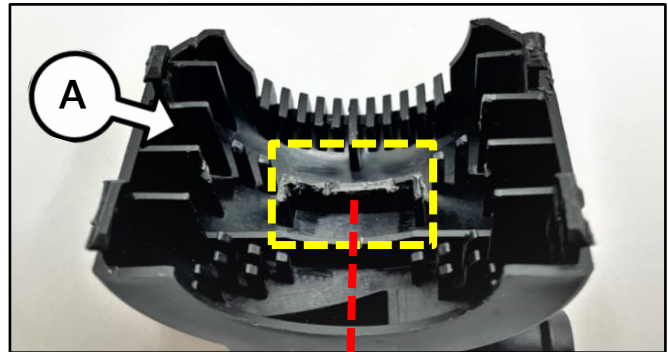
Note: Images of the removed fuel neck assembly are for reference use only.



Note: Depress the four (4) tabs to detach the vent collar (A) from the filler neck.

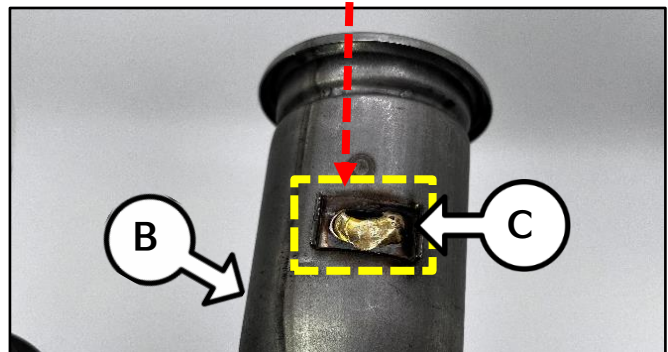


2. Align the **new** vent collar port to the filler neck assembly metal tab (C).



3. Secure the vent collar (A) to filler neck (B) by locking the four (4) tabs from step 1.

4. Install all removed parts in reverse order of removal.



5. Confirm normal vehicle operation.

SUBJECT:

VENT COLLAR INSPECTION & REPAIR (SC268)

ATTENTION: THE PROOF OF CORRECTION CARD AND CAMPAIGN COMPLETION LABEL ARE RESTRICTED ONLY TO DEALERS IN THE FOLLOWING STATES:

California, Connecticut, Delaware, Massachusetts, Maine, Maryland, New Jersey, New York, Oregon, Pennsylvania, Rhode Island, Vermont, and Washington. See Parts Information below to order the Proof of Correction Card and Campaign Completion Label from the PDC.

VEHICLE EMISSION RECALL - PROOF OF CORRECTION CARD

A Vehicle Emission Recall - Proof of Correction card must be filled out for all vehicles registered in California, Connecticut, Delaware, Massachusetts, Maine, Maryland, New Jersey, New York, Oregon, Pennsylvania, Rhode Island, Vermont, and Washington. Residents of these states, who own an affected vehicle, will be required to possess a Vehicle Emission Recall - Proof of Correction card as evidence of voluntary service campaign completion, when they apply for vehicle registration renewal.

WHAT TO DO WITH THE CARD:

The Vehicle Emission Recall - Proof of Correction card must be completed by the Dealership's Service Manager using a permanent ink pen. A fine point pen is recommended. When filling in the information, copy the information directly from the vehicle, not the repair order. **ALL INFORMATION MUST BE PRINTED AND NEAT.**

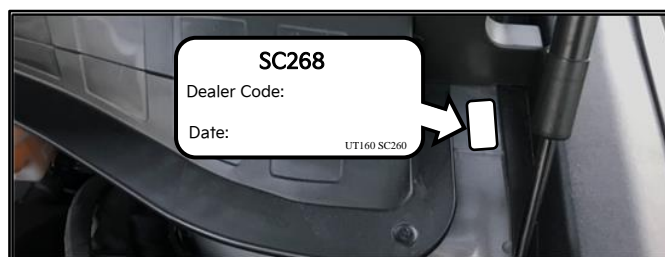
NOTE: DO NOT COMPLETE THE CARD UNLESS THE SERVICE CAMPAIGN WORK IS COMPLETED.

The copy of the card shown below indicates the areas to be filled in. Each area must be filled in. The completed card should be given to the owner of the vehicle upon completion of the Campaign and placement of the Campaign Completion Label outlined below.

FILLING OUT AND APPLYING THE CAMPAIGN COMPLETION LABEL (CA and S.177 STATES ONLY):

The dealer must fill in the Dealer Code and Date information fields on the Campaign Completion Label. Once complete, affix the campaign completion label under the hood of the vehicle, as shown below.

CA and S.177 States Only: Apply SC268 Campaign Completion Label onto the body in the area next to the shock tower, as shown. **NOTE: Be sure to clean the mounting surface to ensure proper label adhesion.**



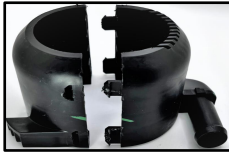
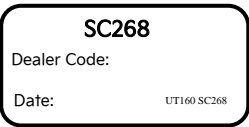

SUBJECT:

VENT COLLAR INSPECTION & REPAIR (SC268)

AFFECTED VEHICLE RANGE:

Model	Production Date Range
Sportage (NQ5a)	November 17, 2022 to January 18, 2023

REQUIRED PART:

Part Name	Part Number	Figure	Qty.
Fuel Filler Neck Vent Collar	31031 P1500QQK		1
Campaign Completion Label	UT160 SC268*		1
Vehicle Emissions Recall Proof of Correction Card	UT161 SC268*		1

WARRANTY INFORMATION:

N Code: N99 C Code: C99

Claim Type	Causal P/N	Qty.	Repair Description	Labor Op Code	Op Time	Replacement P/N	Qty.
R	31030 DW000	0	(SC268) Vent Collar Inspection	230A0510	0.4 M/H	N/A	0
			(SC268) Vent Collar Inspection + Replacement	230A05R0	0.5 M/H	31031 P1500QQK	1

Note: Refer to Warranty Bulletin 2023-17 for claim submission procedures. Manually enter sublet code 'X2' for reimbursement of one roundtrip rideshare expense or up to three (3) days of rental expense, with supporting documentation.

NOTICE

VIN inquiry data for this repair is provided for tracking purposes only. Kia retailers should reference **SC268** when accessing the KDealer+ system.

