

Technical Service Bulletin



66 Door cover trim is loose

66 23 01 2065566/2 July 7, 2023. Supersedes Technical Service Bulletin Group 66 number 21-82 dated December 15, 2021 for reasons listed below.

Model(s)	Year	VIN Range	Vehicle-Specific Equipment
Q7	2019 – 2021	All	Not Applicable
SQ7	2020 - 2021		

Condition

REVISION HISTORY		
Revision	Date	Purpose
2	-	Revised <i>Warranty</i> (Updated claiming structure) Revised <i>Required Parts and Tools</i> (Add materials cost)
1	12/15/2021	Initial publication

Customer states:

- The front door trim cover has a visible gap between the trim and the door panel. The trim cover does not lie flush along the entire length of the trim.

Workshop findings:

- The front door trim cover has come loose from the door panel.

Technical Background

In production, the bonding of the door trim cover was insufficient. This compromised bond may cause the door trim cover to loosen creating a visible gap between the door trim cover and the door panel.

This issue may be discovered on any of the four door trim covers (left front, right front, left rear, and/or right rear).



1. Figure 1 shows a debonded door trim cover.

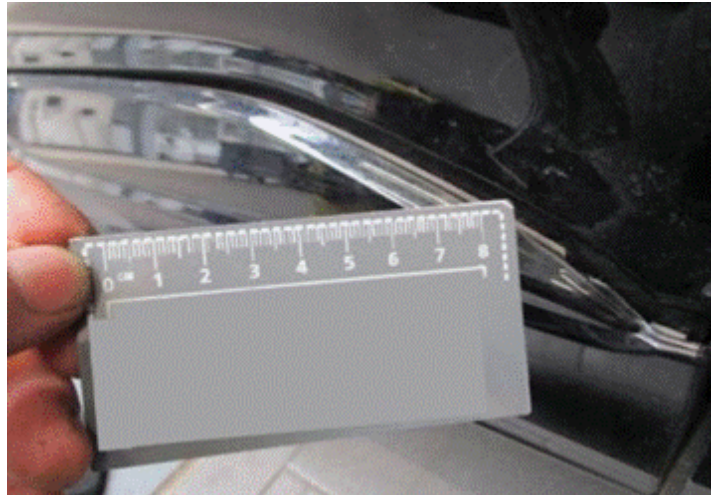


Figure 1. *Debonded door trim cover and extent of detachment.*

2. Figure 2 shows the door trim cover detachment.



Figure 2. *Alternative view of debonded door trim cover.*

Production Solution

The attachment and bonding process of the door trim covers has been optimized in production.

Service

Should the vehicle present with this condition do not make an attempt to reattach the trim. Inspect each of the four door trim covers for detachment. Replace the affected door trim cover in these cases.



Warranty

Claim Type:	<ul style="list-style-type: none"> • 110 up to 6 Months/6,000 Miles. • 1AM over 6 Months/6,000 Miles. • If the vehicle is outside any warranty, this Technical Service Bulletin is informational only. 		
Service Number:	<ul style="list-style-type: none"> • 6622 (Door trim cover front). • 6642 (Door trim cover rear). 		
Damage Code:	0018		
Labor Operations:	Front door trim remove and reinstall	6622 1900	See SRT with associated operations
	Front door trim remove and reinstall – Both right front and left front sides	6622 2000	See SRT with associated operations
	Rear door trim remove and reinstall	6642 1900	See SRT with associated operations
	Rear door trim remove and reinstall – Both right rear and left rear sides	6642 2000	See SRT with associated operations
Sublet Operations	If replacing a door trim cover that requires painting:		
	Replace and paint new part	L0011600 (Solid Paint) L0021600 (Metallic Paint) L0031600 (Pearl Paint)	Max 160 TU
Diagnostic Time:	GFF	No allowance	0 TU
	Road test prior to the service procedure	No allowance	0 TU
	Road test after the service procedure	No allowance	0 TU
Claim Comment:	As per TSB 2065566/2		

All warranty claims submitted for payment must be in accordance with the *Audi Warranty Policies and Procedures Manual*. Claims are subject to review or audit by Audi Warranty.



Required Parts and Tools

Always check with your Parts Department and/or ETKA for the latest information and parts bulletins.		
Part Number	Part Description	Quantity
4M0853959F 4W3	Cover for door – Left front - Anthracite	01
4M0853959G GRU	Cover for door – Left front - Primed	01
4M0853959H GRU	Cover for door – Left front - Primed	01
4M0853959B GRU	Cover for door – Left front - Primed	01
4M0853959J GRU	Cover for door – Left front - Primed	01
4M0853959E GRU	Cover for door – Left front - Primed	01
4M0853960F 4W3	Cover for door – Right front - Anthracite	01
4M0853960G GRU	Cover for door – Right front - Primed	01
4M0853960H GRU	Cover for door – Right front - Primed	01
4M0853960B GRU	Cover for door – Right front - Primed	01
4M0853960J GRU	Cover for door – Right front - Primed	01
4M0853960E GRU	Cover for door – Right front - Primed	01
4M0853969F 4W3	Cover for door – Left rear - Anthracite	01
4M0853969G GRU	Cover for door – Left rear - Primed	01
4M0853969H GRU	Cover for door – Left rear - Primed	01
4M0853969B GRU	Cover for door – Left rear - Primed	01
4M0853969J GRU	Cover for door – Left rear - Primed	01
4M0853969E GRU	Cover for door – Left rear - Primed	01
4M0853970F 4W3	Cover for door – Right rear - Anthracite	01
4M0853970G GRU	Cover for door – Right rear - Primed	01
4M0853970H GRU	Cover for door – Right rear - Primed	01
4M0853970B GRU	Cover for door – Right rear - Primed	01
4M0853970J GRU	Cover for door – Right rear - Primed	01

Technical Service Bulletin



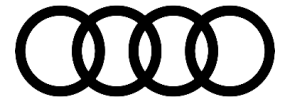
4M0853970E GRU	Cover for door – Right rear - Primed	01
4M0853959M MX3	Cover for door – Left front – Cooler grey	01
4M0853959M GRU	Cover for door – Left front – Primed	01
4M0853959P MX3	Cover for door – Left front – Cooler grey	01
4M0853959P GRU	Cover for door – Left front – Primed	01
4M0853959N GRU	Cover for door – Left front – Primed	01
4M0853959M GRU	Cover for door – Left front – Primed	01
4M0853960M MX3	Cover for door – Right front – Cooler grey	01
4M0853960M GRU	Cover for door – Right front – Primed	01
4M0853960P MX3	Cover for door – Right front – Cooler grey	01
4M0853960P GRU	Cover for door – Right front – Primed	01
4M0853960N GRU	Cover for door – Right front – Primed	01
4M0853960M GRU	Cover for door – Right front – Primed	01
4M0853969M MX3	Cover for door – Left rear – Cooler grey	01
4M0853969M GRU	Cover for door – Left rear – Primed	01
4M0853969P MX3	Cover for door – Left rear – Cooler grey	01
4M0853969P GRU	Cover for door – Left rear – Primed	01
4M0853969N GRU	Cover for door – Left rear – Primed	01
4M0853969M GRU	Cover for door – Left rear – Primed	01
4M0853970M MX3	Cover for door – Right rear – Cooler grey	01
4M0853970M GRU	Cover for door – Right rear – Primed	01
4M0853970P MX3	Cover for door – Right rear – Cooler grey	01
4M0853970P GRU	Cover for door – Right rear – Primed	01
4M0853970N GRU	Cover for door – Right rear – Primed	01
4M0853970M GRU	Cover for door – Right rear – Primed	01
N/A	Paint	Qty 1 Each

Technical Service Bulletin



	Listed as MATERIAL in Outside Material	\$ Cost of Material (Max \$24)
--	--	--------------------------------

Tool Number	Tool Description
3356	 <p>Roller</p>
VAS 1978/14A	 <p>Wiring Harness Repair Set – Hot Air Blower</p>
T10383	 <p>Wedge set</p>



Additional Information

All parts and service references provided in this TSB (2065566) are subject to change and/or removal.

©2023 Audi of America, Inc. All rights reserved. The information contained in this document is based on the latest information available at the time of printing and is subject to the copyright and other intellectual property rights of Audi of America, Inc., its affiliated companies, and its licensors. All rights are reserved to make changes at any time without notice. No part of this document may be reproduced, stored in a retrieval system, or transmitted in any form or by any means, electronic, mechanical, photocopying, recording, or otherwise, nor may these materials be modified or reposted to other sites, without the prior expressed written permission of the publisher.