



# Preliminary Information

## PIP5927 Diagnostic Tip: Possible DTC P0237 P0101 P1101 or p0299 Reduced Power Potential Damage To Charge Air Inlet Hose At Turbocharger

### Models

Brand:	Model:	Model Years:	VIN:		Engine:	Transmissions:
			from	to		
Chevrolet	Equinox	2023	All	All	1.5 LSD	All
GMC	Terrain	2023	All	All	1.5 LSD	All

<b>Involved Region or Country:</b>	<b>North America</b>
<b>Additional RPO/s:</b>	<b>None</b>
<b>Condition:</b>	<b>DTC P0237 P0101 P1101 or P0299 reduced power</b>
<b>Cause:</b>	<b>Potential damage to Charge Air Inlet Pipe at Turbocharger</b>

### Correction

If you encounter one of the above vehicles that has reduced power with DTC p0237, P0101, P1101, or P0299.

Inspect the Charge Air Inlet Pipe at the Turbocharger to see if the anti-abrasion sleeve shows signs of being shredded or split.

If this type of damage has been identified remove the Charge Air Inlet Hose assembly and inspect the Charge Air hose beneath the abrasion sleeve for signs of being split. This type of damage would allow the hose to swell under pressure damaging the abrasion sleeve and altering the readings within the boost control system or create a potential air leak.

Pictures below show damage to abrasion sleeve on Charge Air Inlet Hose.

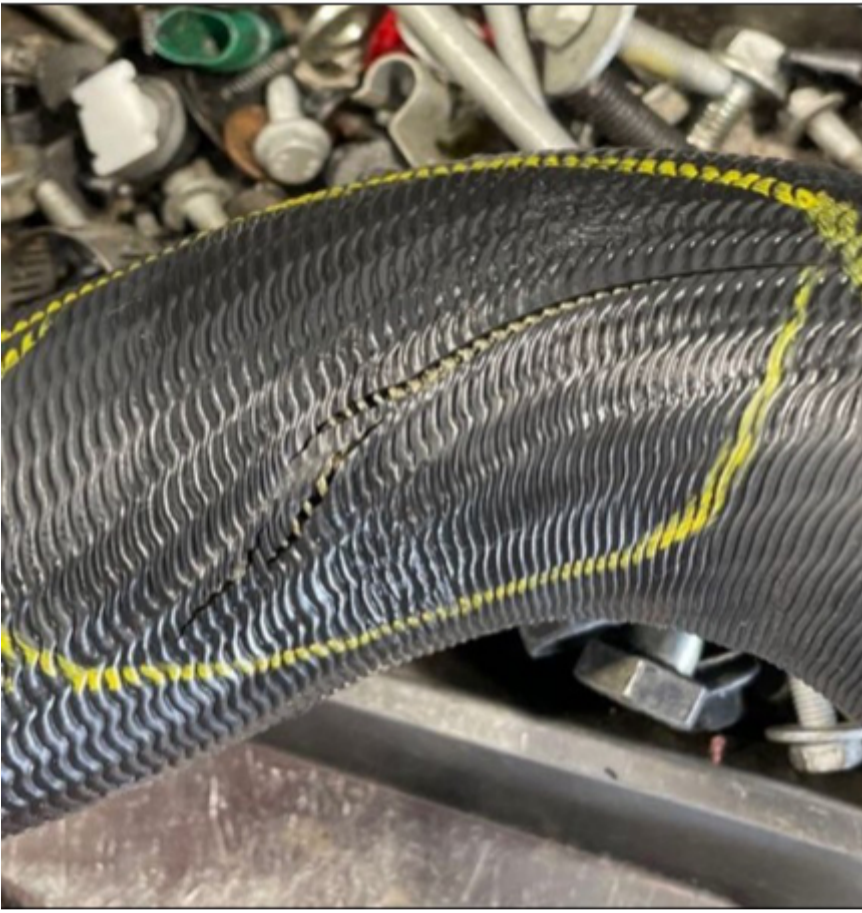
#1



#2



#3 Picture below inside the circled area shows damage to inner hose beneath abrasion sleeve



**Replace Charge Air Inlet Pipe assembly using latest parts listed in EPC.**

Version History

Version	1
Modified	06/13/2023 - Created on.



GENERAL MOTORS

© 2023 General Motors. All Rights Reserved.