



# Service Bulletin

Bulletin No.: 23-NA-073

Date: June, 2023

## TECHNICAL

**Subject: Evaporative DTCs P0442, P0446, P0455 or P0449, Caused by Dust Intrusion into the Evaporative Canister and Canister Vent Solenoid**

Brand:	Model:	Model Year:		VIN:		Engine:	Transmission:
		from	to	from	to		
Chevrolet	Silverado 1500 (New Model - 12th VIN Digit = 7) - 4WD	2019	2019			All	All
	Silverado 1500 (New Model)						
	Silverado 1500	2020	2023				
	Silverado 1500 LTD (RPO J21, VIN Digit 5 = W / Y)	2022	2022				
	Silverado 1500 New (RPO J22, VIN Digit 5 = A / D)	2022	2022				
	Silverado 2500 HD/3500 HD	2020	2024				
GMC	Sierra 1500 (New Model)	2019	2019				
	Sierra 1500	2020	2023				
	Sierra 1500 Limited (RPO J21, VIN Digit 5 = 8 / 9)	2022	2022				
	Sierra 1500 New (RPO J22, VIN Digit 5 = H / U)	2022	2022				
	Sierra 2500 HD/3500 HD	2020	2024				

<b>Involved Region or Country</b>	United States, Canada, Middle East, Israel
<b>Additional Options (RPOs)</b>	
<b>Condition</b>	Some customers, who operate their vehicles in extremely dusty environments, may experience dust intrusion into the EVAP system that can plug the canister and canister vent solenoid and set DTC's P0442, P0446, P0455 or P0449.
<b>Cause</b>	The condition may be caused the by the normal use of these vehicles operating in severe dusty environments.

**Important:** This repair is a customer pay alteration. All repair, and payment authorization must come from the customer.



6325318

**Note:** The retro-fit to add the filter is described in the Service Procedure below. For the retro-fit, the filter assembly P/N (with the 3 parts shown above) will need to be utilized. If a vehicle has already undergone the retro-fit and the vehicle returns after a period of time with the Condition reappearing, the repair can be the filter (1).

**Note:** The filter is meant to be maintenance item that should be checked periodically to prevent the issue from reoccurring and the DTC from setting.

Correction



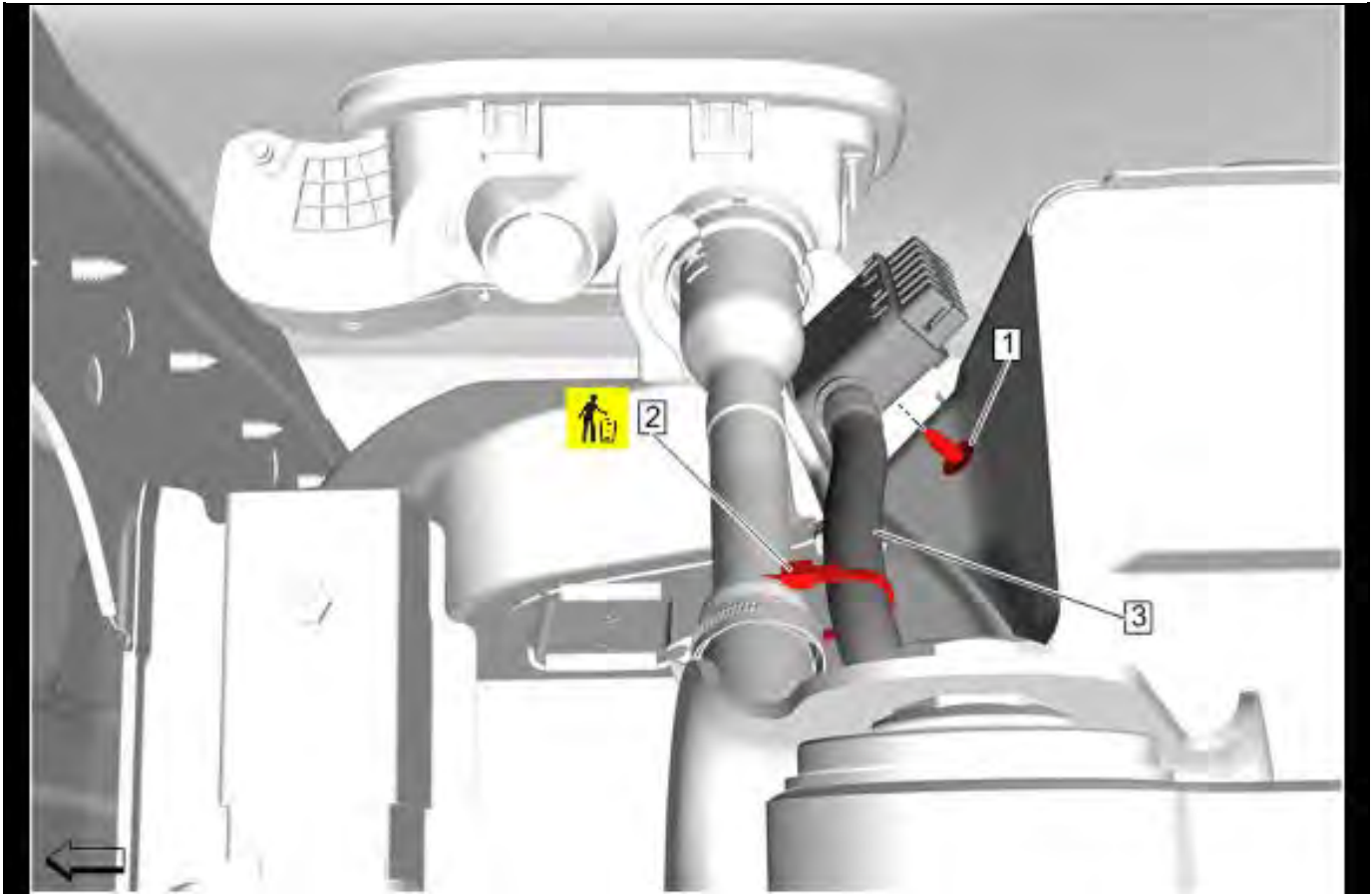
6327015

A filter may be installed between the EVAP canister and air inlet, to correct this Condition. An example of the original, and the retro-fit, evaporative emission canister vent hose are shown in the graphic above.

## Service Procedure

**Important:** Service agents must comply with all International, Federal, State, Provincial, and/or Local laws applicable to the activities it performs under this bulletin, including but not limited to handling, deploying, preparing, classifying, packaging, marking, labeling, and shipping dangerous goods. In the event of a conflict between the procedures set forth in this bulletin and the laws that apply to your dealership, you must follow those applicable laws.

1. Raise and support the vehicle. Refer to *Lifting and Jacking the Vehicle*, in SI.



5041593

2. Remove the evaporative emission canister vent hose (3). Refer to the appropriate *Evaporative Emission Canister Vent Hose Replacement (Filler Pipe to Pipe)*, in SI.



6325322

3. Cut the vent hose at the end of barbed fitting on the pre filter (1).



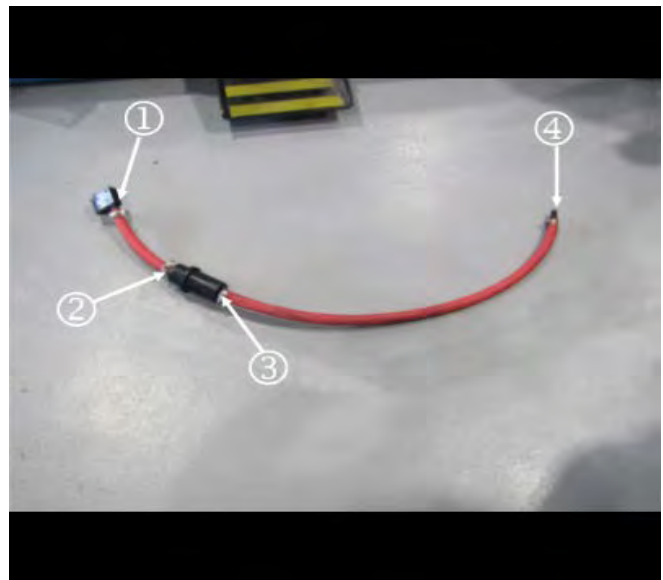
6325324

4. Cut a 12 inch (30.5 cm) length of 3/4 in. diameter heater core hose.



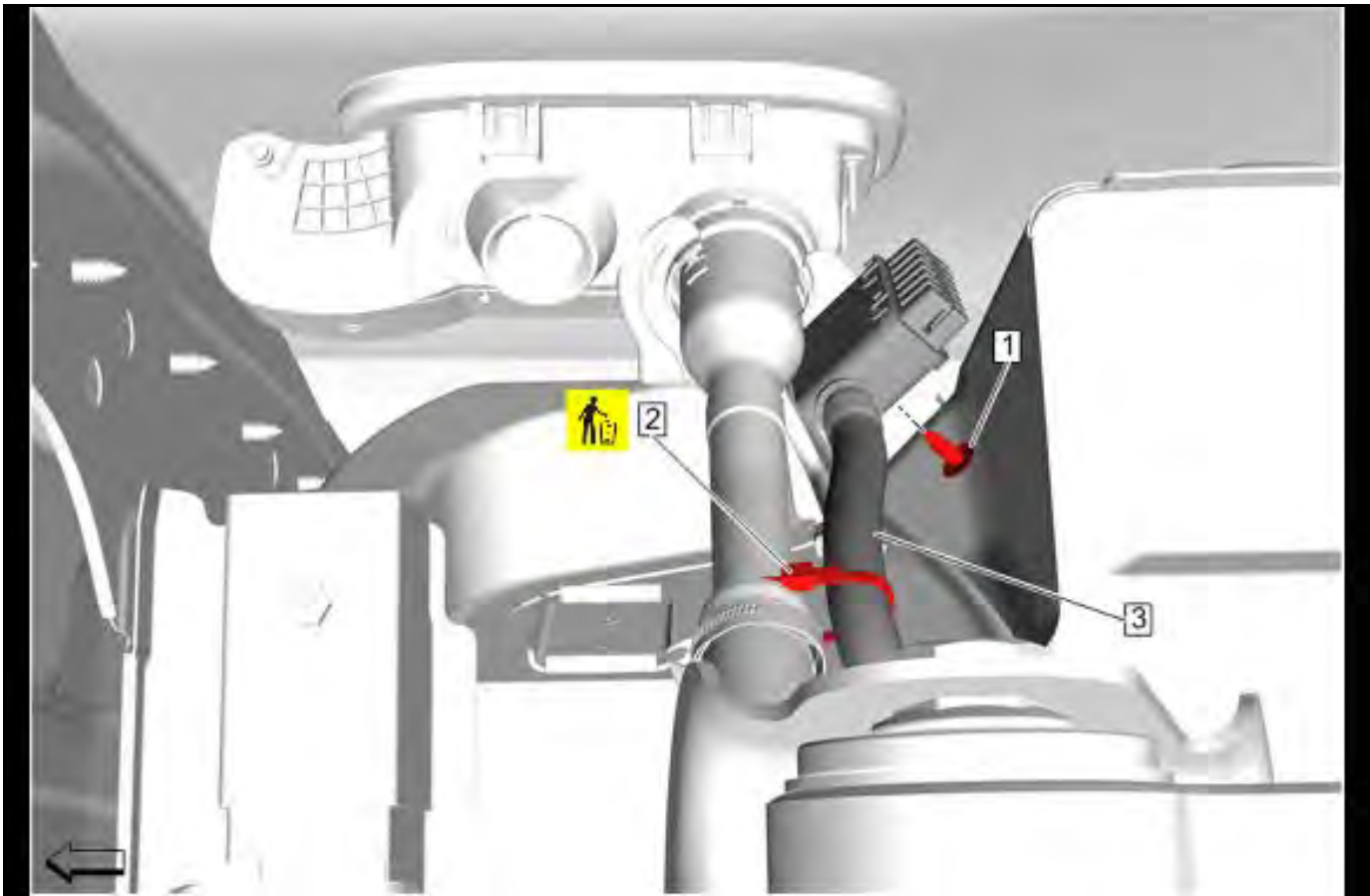
6325326

5. Using the length of the original black corrugated hose as a measurement, cut a length of 3/4 in. diameter heater core hose the same appropriate length.



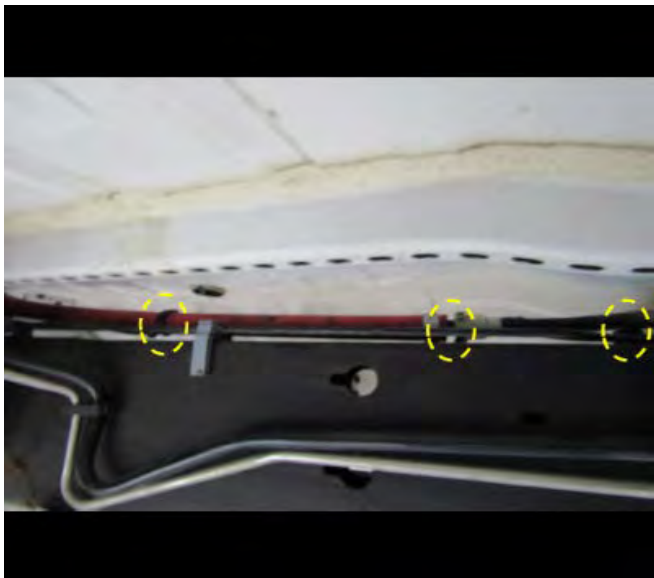
6325328

6. Secure the 12 inch (30.5 cm) length heater core hose to the fitting on the pre filter (1), using a hose clamp.
7. Secure the in-line filter (2) to the other end of 12" (30.5 cm) length hose, using a hose clamp.
8. Secure the longer heater core hose to the fitting at bottom of in-line filter (3), using a hose clamp.
9. Insert 5/8" male to male fitting (4) into heater core hose on CVS side, using a hose clamp to secure.



10. Connect 5/8" end of male fitting to the quick connect on the CVS jumper line and install the evaporative emission canister vent hose (3), to the vehicle. Refer to the appropriate *Evaporative Emission Canister Vent Hose Replacement (Filler Pipe to Pipe)*, in SI.

5041593



6325329



6325331

- 11. Using existing hose clips, and tie straps, clip new hose at same location as previous line.
- 12. Lower the vehicle.

## Parts Information

Causal Part	Description	Part Number	Qty
N/A	FILTER ASM-EVAP EMIS SYS VAC LEAK PUMP (ASSEMBLY)	86792068	1
	FILTER ASM-EVAP EMIS SYS VAC LEAK PUMP (FOAM FILTER)	86792069	1

## Warranty Information

**Important: This repair is not a warranty repair, but a customer pay alteration. All repair, and payment authorization must come from the customer.**

Version	1
Modified	Released June 19, 2023.

