

Technical Bulletin



Bulletin No: TCH-27-005 Rev 000

Initial Release Date: 5/15/23 Revision: N/A

Page: 1 of 4

Subject: **Bendix® EC-80™ Antilock Braking System (ABS) Electronic Control Unit (ECU)
Standalone Update Tool - ID 13351**

DESCRIPTION

The Bendix® EC-80™ Antilock Braking System (ABS) Electronic Control Unit (ECU) may require an update due to a malfunctioning ABS warning lamp. There are instances where the ABS warning lamp *does not illuminate* in situations where it *should* (i.e. when there is an active Diagnostic Trouble Code [DTC] and the vehicle is in motion). The Bendix EC-80 standalone update tool can be used to update the ECU and restore proper functionality.



In certain versions of the EC-80 ABS ECU, a malfunction may not be correctly indicated by the ABS warning lamp. While the ABS warning lamp will function as intended when the vehicle is stationary, it will turn off when the vehicle is in motion. Other dashboard lamps will illuminate to signal the driver to seek service. A malfunctioning warning lamp may potentially confuse the driver. A software update is available for impacted EC-80 ABS ECU versions to help eliminate these concerns.

Refer to Table 1 for a list of impacted and updated part numbers.

| Bendix Part Number | | Navistar Part Number | | Software Z Number | |
|--------------------|--------------|----------------------|------------|-------------------|------------|
| Impacted PN | Updated PN | Impacted PN | Updated PN | Impacted PN | Updated PN |
| K210927R000 | K210927R001 | 4045853C4 | 4045853C5 | Z251843 | Z286098 |
| K210928R000 | K210928R001 | 4055091C4 | 4055091C5 | Z251843 | Z286098 |
| K210929R000 | K210929R001 | 4104387C3 | 4104387C4 | Z251843 | Z286098 |
| K212564SC000 | K212564SC001 | - | - | Z251843 | Z286098 |
| K212565SC000 | K212565SC001 | - | - | Z251843 | Z286098 |
| K212566SC000 | K212566SC001 | - | - | Z251843 | Z286098 |
| K219871R000 | K219871R001 | 4288644C1 | 4288644C2 | Z281032 | Z285654 |
| K219872R000 | K219872R001 | 4288638C1 | 4288638C2 | Z281032 | Z285654 |
| K219874R000 | K219874R001 | 4288643C1 | 4288643C2 | Z281032 | Z285654 |
| K219876SC000 | K219876SC001 | - | - | Z281032 | Z285654 |
| K219877SC000 | K219877SC001 | - | - | Z281032 | Z285654 |
| K219878SC000 | K219878SC001 | - | - | Z281032 | Z285654 |
| K227744T000 | K227744T001 | - | - | Z251843 | Z286098 |
| K227745T000 | K227745T001 | - | - | Z251843 | Z286098 |

Table 1 – Impacted and Updated Part Numbers

ELECTRONIC CONTROL UNIT (ECU) UPDATE PROCEDURE

To perform the update, a Windows® laptop (Windows 10 or 11 is recommended) with the standalone update tool downloaded, a compatible RP1210C adapter (i.e. Noregon®, Nexiq™, etc.), and the manufacturer's Windows drivers for the RP1210C device are required.

1. Key on the vehicle with the engine off.
2. Select the *EC80 Update Tool-ID 13551* shortcut. Select the installed diagnostic interface and channel. See Figure 1.

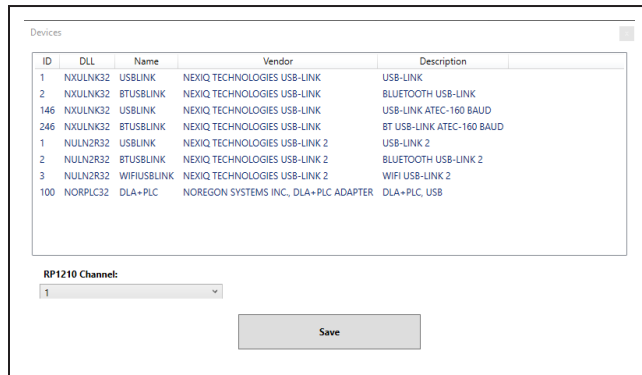


Figure 1 – Interface and Channel Selection

3. Select *Update*. See Figure 2.

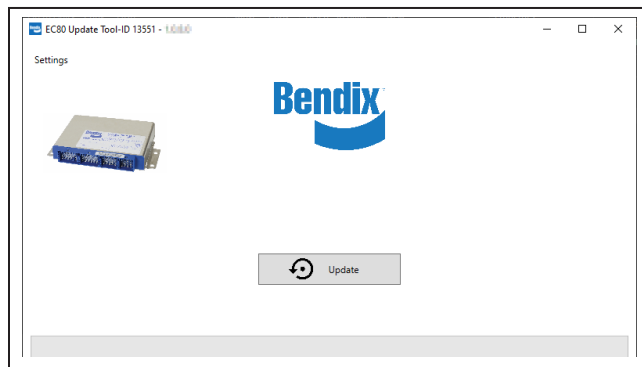


Figure 2 – Update Icon

4. Figure 3 shows the update is in process. The update time is approximately two (2) minutes.

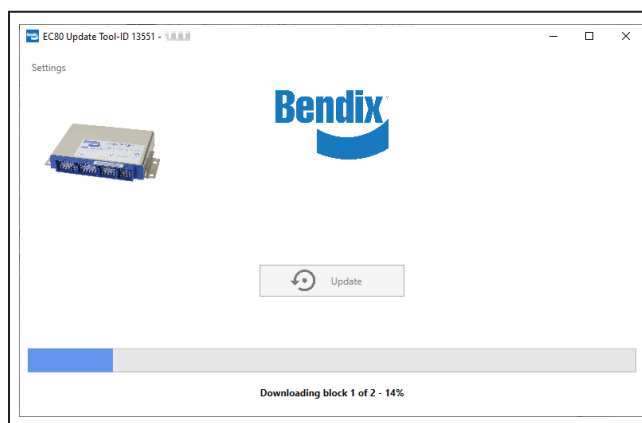


Figure 3 – Update in Process

5. Figure 4 shows the update completed successfully.

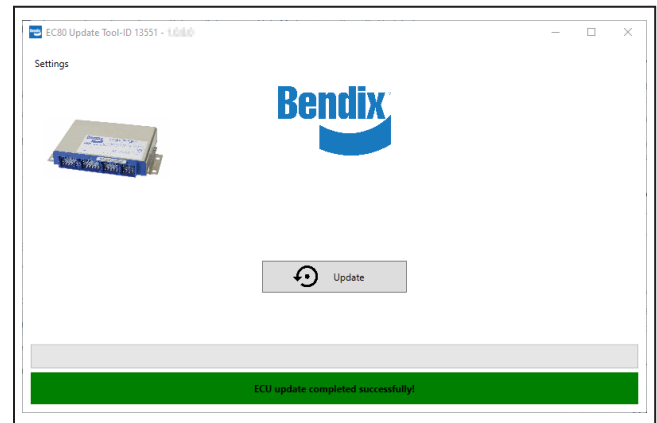


Figure 4 – Update Completed Successfully

6. Figure 5 shows the update failed. Power cycle and restart the update procedure from Step 1.

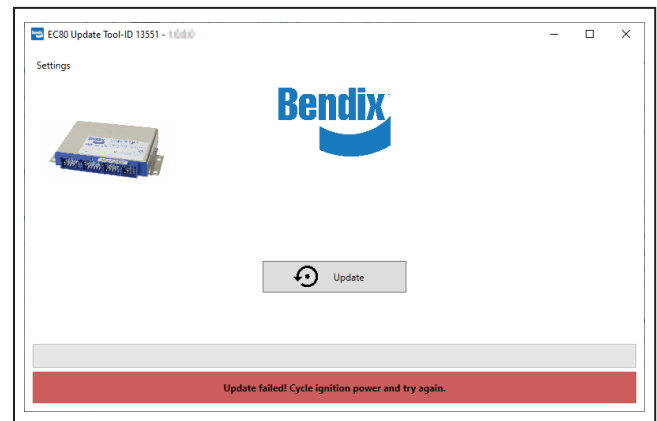


Figure 5 – Download Failed

7. Figure 6 shows the update has already been performed. No further action is required.

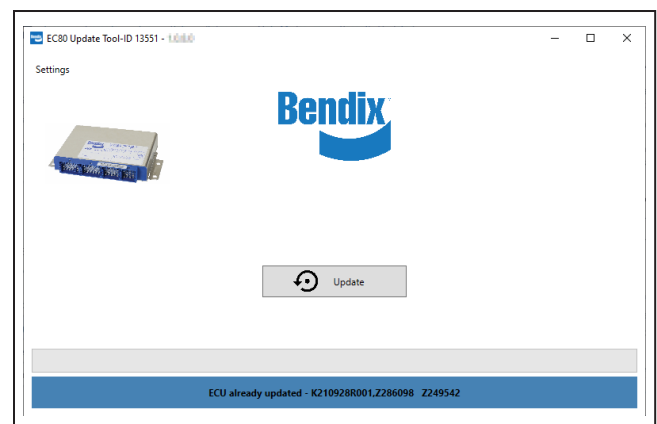


Figure 6 – Update Already Performed

8. *Figure 7* shows the Electronic Control Unit (ECU) is not eligible for the update. No further action is required.

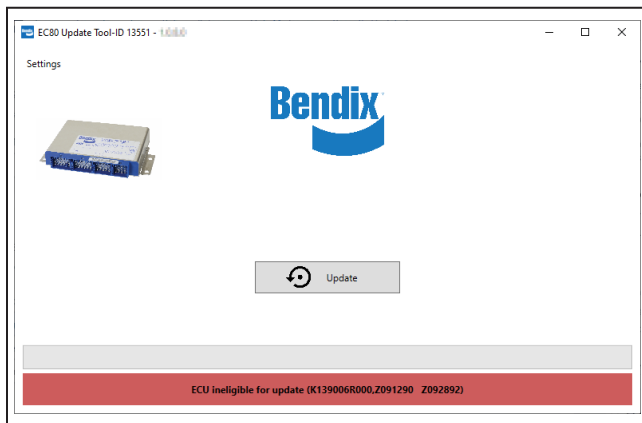


Figure 7 – ECU Ineligible for Update

9. *Figure 8* shows the engine RPM has been detected. Power cycle to ignition only and restart the update procedure from Step 1.



Figure 8 – Engine RPM Detected

10. *Figure 9* shows the ECU is not detected. Verify the ignition power is ON and/or ensure the correct RP1210C channel is selected. Restart the update procedure from Step 1.

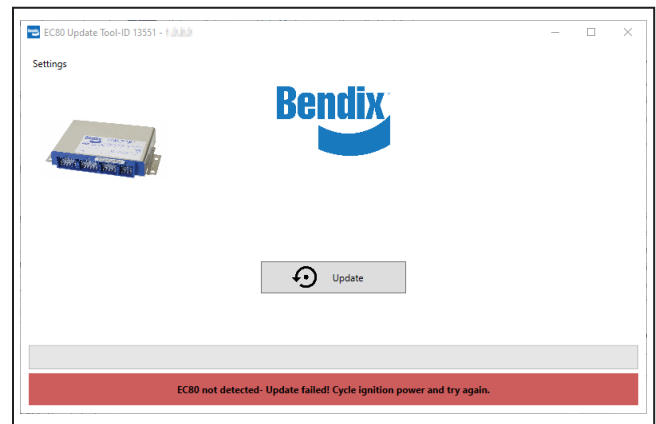


Figure 9 – ECU Not Detected

ADDITIONAL SUPPORT

Phone Bendix technical support at 1-800-AIR-BRAKE (1-800-247-2725), option 2, Monday through Thursday, 8:00 a.m. to 6:00 p.m., and Friday, 8:00 a.m. to 5:00 p.m. ET, or by email at techteam@bendix.com.

