



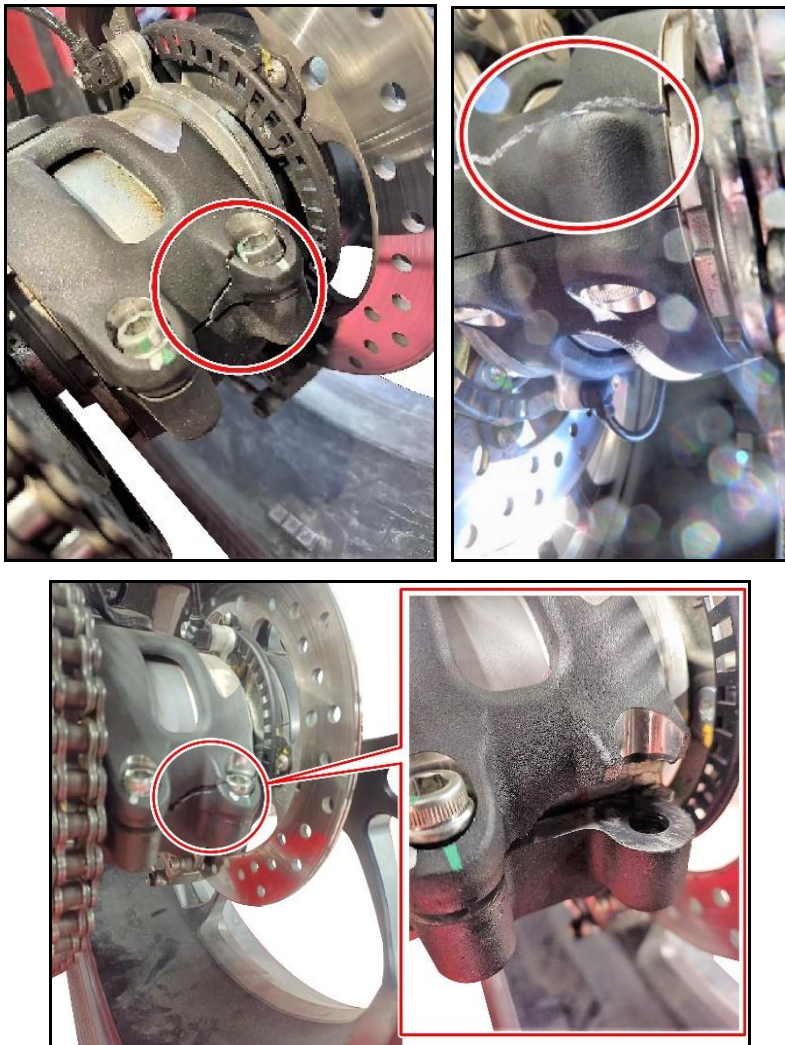
## Swing Arm Rear Hub Tightening Indications Panigale V4 Model Year 2018-2023 (all versions) Service Repair Bulletin SRV-SRB-23-034

Date: June 22, 2023  
To: Dealer Principal, General Manager, Service Manager, North American Dealer Network  
From: Richard Kenton, Technical Director  
Dan Schwartz, Service Area Manager

---

Dear Dealers,

We would like to inform you that we have received several reports concerning the breakage of the swing arm at the wheel hub tightening screws area.



After analyzing some of these cases, we were able to determine that the cause was due to over-tightening of the two concerned screws (the specified torque is **20Nm ± 5%**).



## Swing Arm Rear Hub Tightening Indications

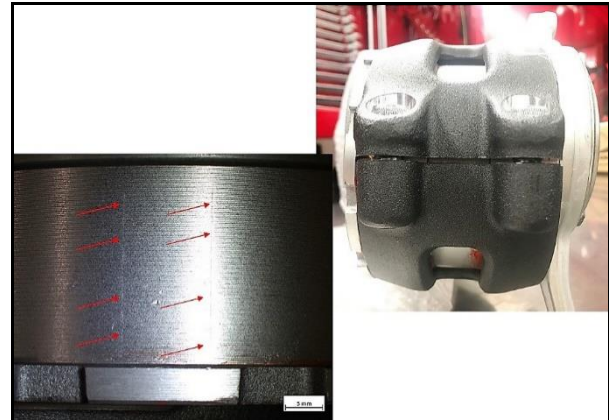
Panigale V4 Model Year 2018-2023 (all versions)  
Service Repair Bulletin SRV-SRB-23-034

We are able to determine when a hub has been over-tightened in the following ways:

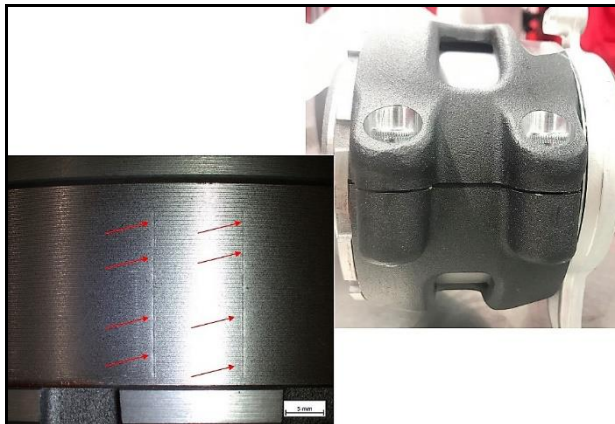
- The incorrect distance between the two swing arm edges
- Indentation marks on the hub can be easily noted in the hub tightening area (visible after removal). If the tightening torque is correct, the hub is NOT indented.



*Eccentric hub after tightening the screws to 20Nm*



*Eccentric hub after tightening the screws to 30Nm*



*Eccentric hub after tightening the screws to 40Nm*



### WARNING

Non-observance of tightening torques can lead to breakage or functional problems, with safety risks. Therefore, it is your responsibility to scrupulously follow the procedures and torques provided for each specific application.

In such cases, you have all the elements to find out who did the previous tightening of the hub and decline any warranty support and related liability.

These cases will not be considered in warranty claims and will be rejected.

Finally, we kindly ask you to make clients aware of the importance of always contacting the official Ducati Dealers for maintenance and repair, even for final drive chain adjustment.

For questions about this Service Bulletin,  
please contact your Service Area Manager.