

ATTENTION:

GENERAL MANAGER ☐
 PARTS MANAGER ☐
 CLAIMS PERSONNEL ☐
 SERVICE MANAGER ☐

IMPORTANT - All
 Service Personnel
 Should Read and
 Initial in the boxes
 provided, right.

© 2022 Subaru of America, Inc. All rights reserved.



SUBARU.

QUALITY DRIVEN® SERVICE

SERVICE INFORMATION BULLETIN

APPLICABILITY: 2019-22MY Ascent
 2020-22MY Legacy & Outback 2.4L

NUMBER: 02-190-22R

DATE: 03/29/22

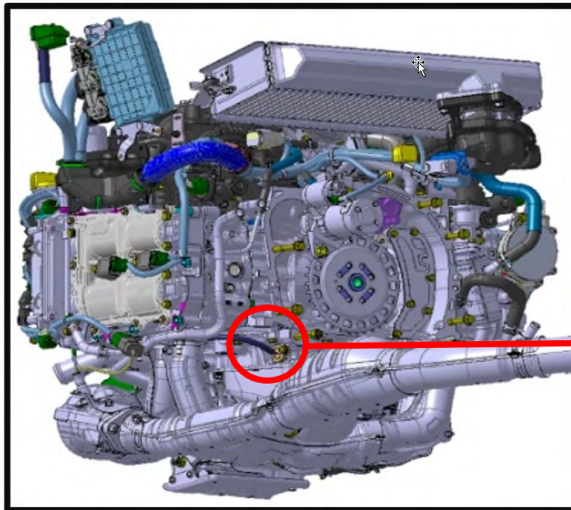
SUBJECT: Proper Diagnosis of Oil Level Switch Leaks

REVISED: 06/29/23

INTRODUCTION:

This Service Information Bulletin announces the proper diagnostic procedures regarding oil leakage from the oil level switch area. There is a slight clearance between the center epoxy portion of the oil level switch and its exterior. Engine oil flows through the switch and can cause the clearance to become saturated in oil. During engine operation, the switch temperature increases and the clearance between the epoxy and the exterior shrinks due to thermal expansion. As this clearance shrinks, the previously saturated oil is forced out and gives the appearance of a leaking oil level switch.

PART INFORMATION:



Pictured above is an example of an oil level switch **NOT** leaking oil but can be perceived to have a leak.

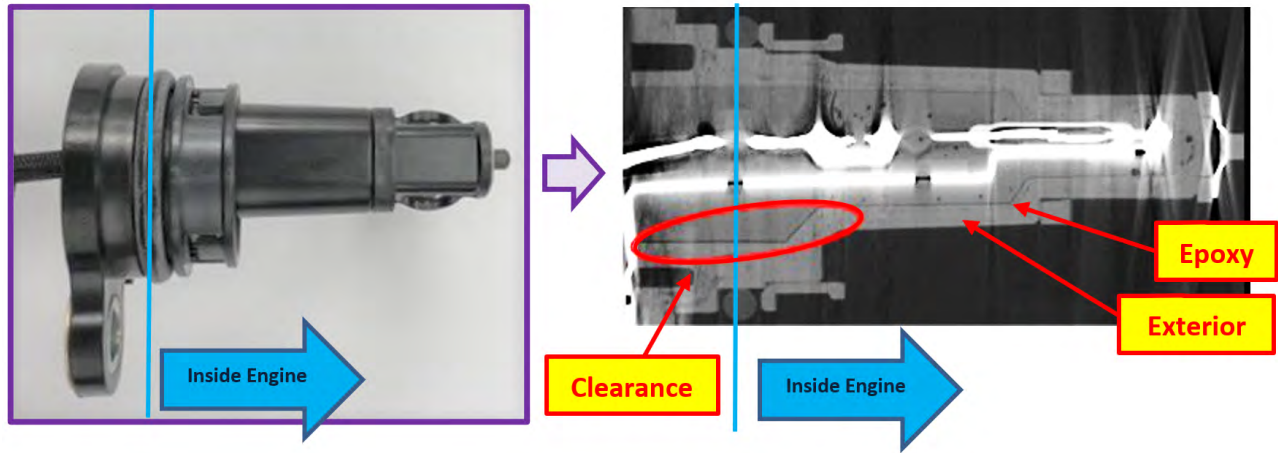
CAUTION: VEHICLE SERVICING PERFORMED BY UNTRAINED PERSONS COULD RESULT IN SERIOUS INJURY TO THOSE PERSONS OR TO OTHERS.

Subaru Service Bulletins are intended for use by professional technicians ONLY. They are written to inform those technicians of conditions that may occur in some vehicles, or to provide information that could assist in the proper servicing of the vehicle. Properly trained technicians have the equipment, tools, safety instructions, and know-how to do the job correctly and safely. If a condition is described, DO NOT assume that this Service Bulletin applies to your vehicle, or that your vehicle will have that condition.

Subaru of America, Inc. is ISO 14001 Compliant

ISO 14001 is the international standard for excellence in Environmental Management Systems. Please recycle or dispose of automotive products in a manner that is friendly to our environment and in accordance with all local, state and federal laws and regulations.

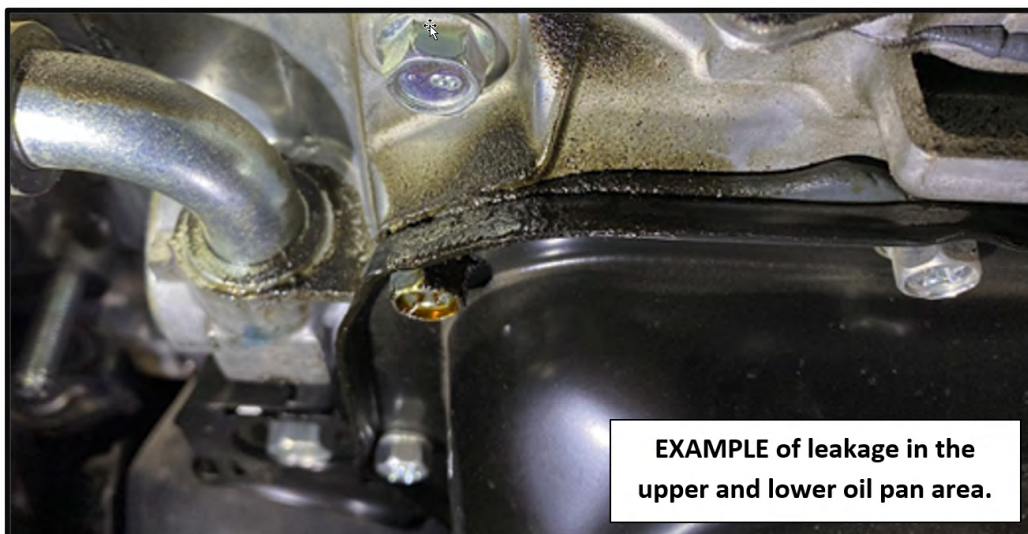
Continued...



SERVICE PROCEDURE / INFORMATION:

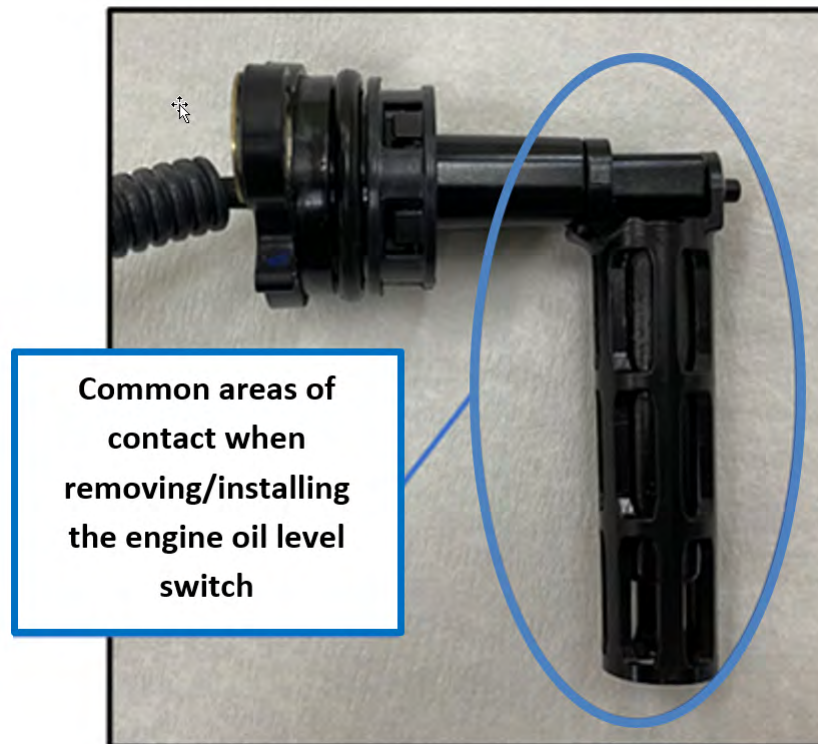
Please follow the procedure below if you find any engine oil on the level switch when an oil leak is being detected. First clean the area and apply a leak seeking powder for easier observation.

1. Observe contact surfaces of the following:
2. Oil Level Switch, Lower Oil Pan, Upper Oil Pan, Engine Block, Cylinder Heads, and Transmission.
3. Confirm if engine oil is leaking from anywhere other than the oil level switch.
4. If any leaks are found, drain the engine oil, and replace and/or reseal the leaking part(s) as necessary.
5. When replacing the leaking component, take special care not to damage the oil level switch by contacting it with other parts while removing and installing, as the float may become damaged. As for the oil level switch, if there's no cracks or damage found during visual inspection, clean and reinstall the switch.
6. Correct the engine oil level. Perform a road test. Re-inspect for any leaks.



Continued...

IMPORTANT: The oil level switch o-ring is a one time use part and should be replaced when the switch is removed, replaced, or when the upper oil pan is resealed.



WARRANTY / CLAIM INFORMATION:

There have been no changes to the labor time for the procedures listed above. Always refer to the applicable Labor Time Guide for claim information.

IMPORTANT REMINDERS:

- SOA strongly discourages the printing and/or local storage of service information as previously released information and electronic publications may be updated at any time.
- Always check for any open recalls or campaigns anytime a vehicle is in for servicing.
- Always refer to STIS for the latest service information before performing any repairs.