

Technical Service Bulletin



66 Rear license plate - decorative frame cannot be installed

66 23 00 2055713/4 June 15, 2023. Supersedes Technical Service Bulletin Group 66 number 22-87 dated May 6, 2022, for reasons listed below.

Model(s)	Year	VIN Range	Vehicle-Specific Equipment
Q3	2019 – 2024	All	Not Applicable

Condition

REVISION HISTORY		
Revision	Date	Purpose
4	-	Revised header (Added MY 2024)
3	05/06/2022	Revised header (Added MY 2023)
2	06/15/2021	Revised header (Added model years)

When attempting to install a rear license plate with a novelty or decorative license plate frame the installation cannot be completed.

Technical Background

1. Installation of the license plate together with the novelty or decorative plate frame is not possible due to interference between the frame and the rearview camera.

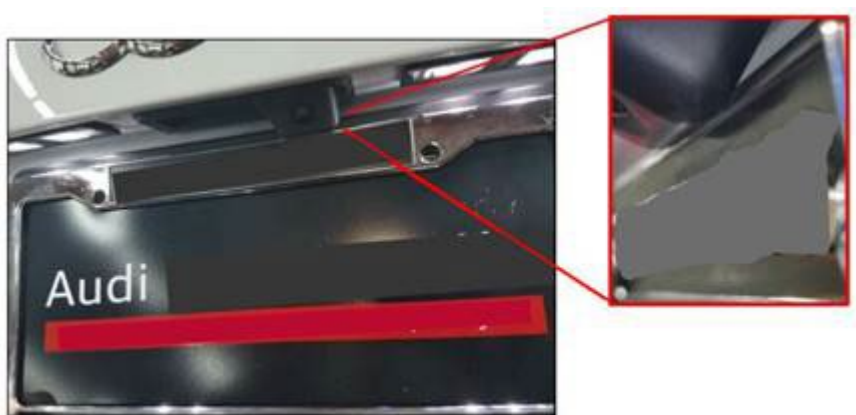
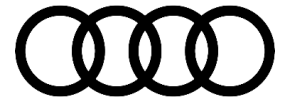


Figure 1. Interference between the decorative license plate frame and the rearview camera.



2. The license plate without the frame will be successfully installed on the rear license plate holder without any interference.



Figure 2. The rear license plate successfully installed on the new Q3.

Production Solution

Not Applicable

Service

Do not attempt to install a rear license plate with a novelty or decorative license plate frame on the new Q3. Damage to the rearview camera may occur. Additionally, do not eliminate or make any modification to the rear license plate holder in an attempt to facilitate the installation of the license plate with the frame to the vehicle. Any contact with the rearview camera is to be avoided.

Warranty

This TSB is informational only and not applicable to any Audi warranty.

Additional Information

All part and service references provided in this TSB (**2055713**) are subject to change and/or removal. Always check with your Parts Department and/or ETKA for the latest information and parts bulletins. Please check the Repair Manual for fasteners, bolts, nuts, and screws that require replacement during the repair.

©2023 Audi of America, Inc. All rights reserved. The information contained in this document is based on the latest information available at the time of printing and is subject to the copyright and other intellectual property rights of Audi of America, Inc., its affiliated companies, and its licensors. All rights are reserved to make changes



at any time without notice. No part of this document may be reproduced, stored in a retrieval system, or transmitted in any form or by any means, electronic, mechanical, photocopying, recording, or otherwise, nor may these materials be modified or reposted to other sites, without the prior expressed written permission of the publisher.