



TECHNICAL SERVICE BULLETIN

| | | |
|------------------------------|--------------------------|------------------------|
| Classification: EC19-004B | Reference: NTB19-036B | Date: June 13, 2023 |
|------------------------------|--------------------------|------------------------|

MIL ON WITH DTC P26DE STORED IN THE ECM

This bulletin has been amended. See **AMENDMENT HISTORY** on the last page.
Please discard previous versions of this bulletin.

APPLIED VEHICLES: 2017-2020 GT-R (R35)

IF YOU CONFIRM

The MIL is ON with DTC P26DE (ENGINE SOUND CONTROL “A” CIRCUIT PERFORMANCE) stored in the ECM,

AND

The cause is determined to be the Electric Control Valve.

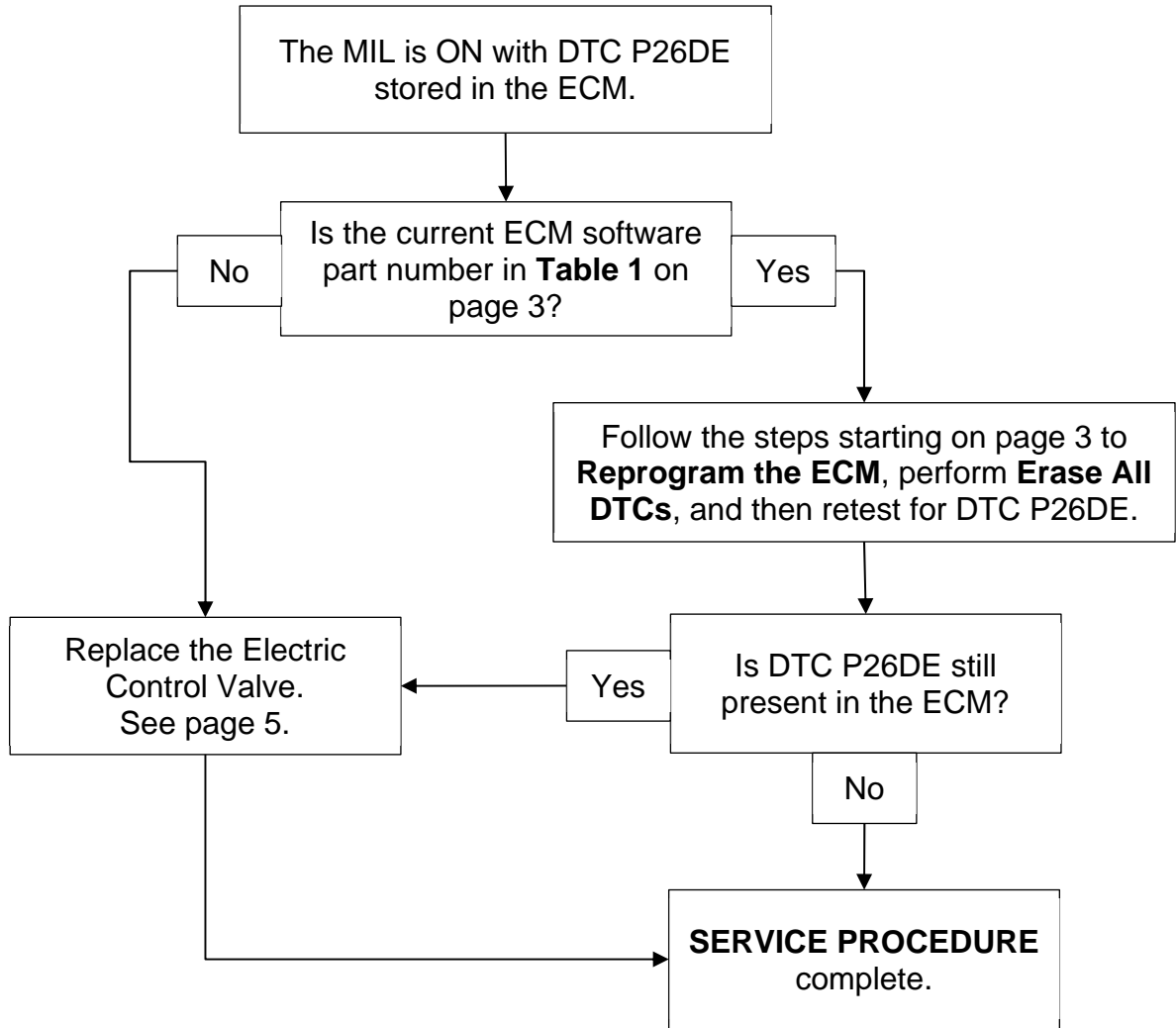
ACTION

Refer to the **Repair Overview** on page 2 to determine appropriate **SERVICE PROCEDURE**.

IMPORTANT: The purpose of **ACTION** (above) is to give you a quick idea of the work you will be performing. You **MUST** closely follow the entire **SERVICE PROCEDURE** as it contains information that is essential to successfully completing this repair.

Nissan Bulletins are intended for use by qualified technicians, not 'do-it-yourselfers'. Qualified technicians are properly trained individuals who have the equipment, tools, safety instruction, and know-how to do a job properly and safely. **HINT:** If you believe that a described condition may apply to a particular vehicle, **DO NOT** assume that it does. See your Nissan dealer to determine if this applies to your vehicle.

Repair Overview



SERVICE PROCEDURE

Reprogram the ECM

1. Using CONSULT-III plus, confirm the current ECM part number and write it on the repair order.
 - If it matches one of the part numbers in **Table 1**, continue to step 2 on page 4.
 - If it does not match one of the part numbers in **Table 1**, skip to step 5 on page 5 to replace the Electric Control Valve.

Table 1

| MODEL | CURRENT ECM PART NUMBER: 23710- |
|-------|--|
| GT-R | 45S1A, 6AV0A, 6AW0A, 6HR0A, 6HR2A, 6HR6A, 6HR6B, 6HS0A 6HT2B, 6HT2C |

NOTICE

Perform the following before starting the reprogramming procedure to prevent damage to the control unit.

- Connect the AC Adapter to the CONSULT PC.
- Connect the CONSULT PC to the Internet via Wi-Fi.
- Ensure ASIST on the CONSULT PC has been synchronized (updated) to the current date and all CONSULT software updates (if any) have been installed.

HINT:

- Take the vehicle for a 10 minute drive in order to meet the following Idle Air Volume Learning conditions:
 - Engine coolant temperature: 70 - 100°C (**158 - 212°F**)
 - Battery voltage: More than 12.9 V (At idle)
 - Transmission: Warmed up
- When reprogramming is complete, you will be required to perform **Throttle Valve Closed Position, Idle Air Volume Learning, Accelerator Closed Position, and DTC Erase**.
- Turn OFF all external Bluetooth® devices (e.g., cell phones, printers, etc.) within range of the CONSULT PC and the VI. If Bluetooth® signal waves are within range of the CONSULT PC or VI during reprogramming, the reprogramming may be interrupted.
- Turn the hazard warning lamps ON.
- Turn OFF all other vehicle electrical loads such as exterior lights, interior lights, HVAC, blower, rear defogger, audio, NAVI, seat heater, steering wheel heater, etc. If electrical loads remain ON, the ECM may be damaged.
- Connect a battery maintainer or smart charger, set to reflash mode or a similar setting, to ensure the battery voltage stays between 12.0 V and 15.5 V.

2. Reprogram the ECM.

HINT: If you are not familiar with the reprogramming procedure, *click here*. This will link you to the "**CONSULT-III PLUS REPROGRAMMING FOR ENGINE OR TRANSMISSION CONTROL MODULE (ECM OR TCM)**" general procedure.

3. After completing **Erase All DTCs**, print a copy of the CONSULT screen showing the before and after part numbers of the control unit and attach it to the repair order.

4. Retest for DTC P26DE.

- Does DTC P26DE reoccur in the ECM?

No: The **SERVICE PROCEDURE** is complete, skip to the **CLAIMS INFORMATION** on the last page.

Yes: Continue to step 5 on page 5 to **Replace the Electric Control Valve**.

Replace the Electric Control Valve

5. Remove the main muffler assembly (Figure 1).
 - For main muffler assembly removal, refer to the Electronic Service Manual (ESM). Type “exhaust system” in the **Title Search** box, and then select the [Removal and Installation \(GT-R certified NISSAN dealer\)](#) link to the right of **TITANIUM MUFFLER**.

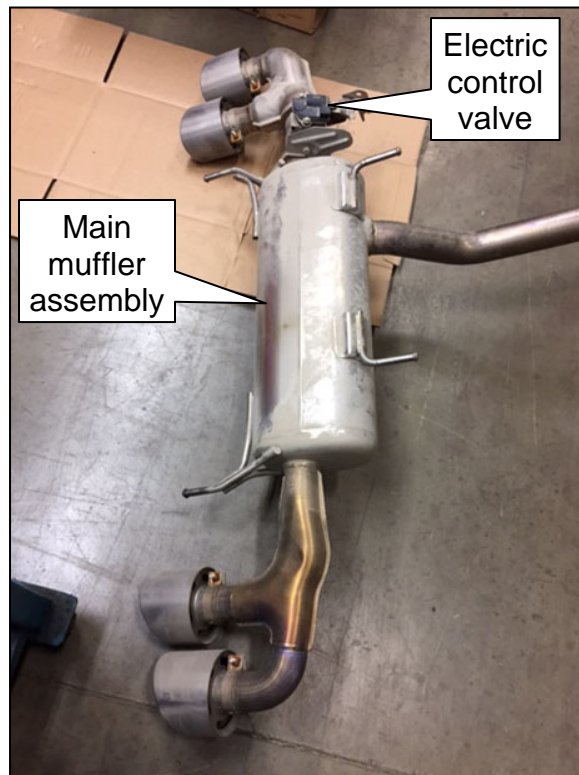


Figure 1

6. Remove the four (4) nuts and bolts, and then remove the electric control valve.

HINT:

- Two of the nuts and bolts are hidden in Figure 2.
- The electric control valve is also called “electric control muffler” in the ESM.

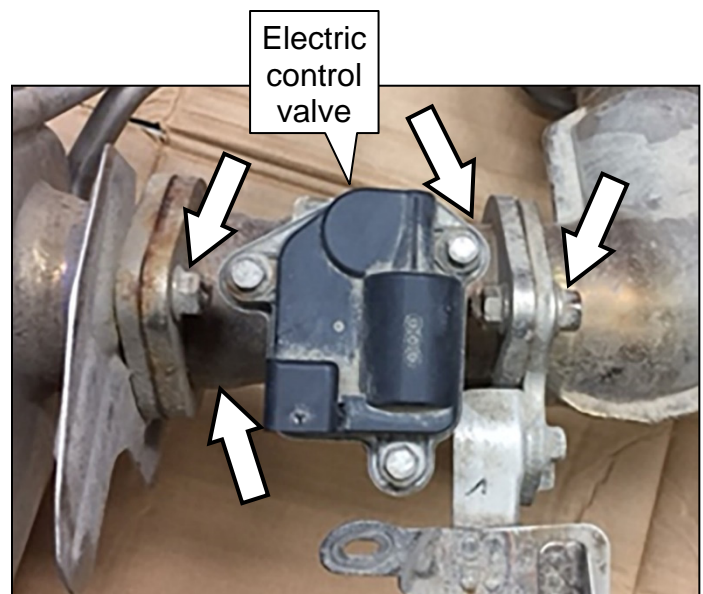


Figure 2

HINT: The nuts and bolts are secured by a small weld. Twist off the nuts to break the welds (Figure 3).



Figure 3

7. Install the new electric control valve to the main muffler assembly with new nuts and bolts.
 - Use new gaskets (see **PARTS INFORMATION** on page 7). Do not reuse the old gaskets.
 - For electric control valve installation, refer to the ESM. Type “exhaust system” in the **Title Search** box, and then select the [Exploded View](#) link to the right of **TITANIUM MUFFLER**.

HINT: The nuts and bolts need only to be torqued. They do not need to be welded after torquing. Torque values are in the ESM where outlined above.

8. Reinstall the main muffler assembly.
 - Use new gaskets (see **PARTS INFORMATION** on page 7). Do not reuse old gaskets.
 - For main muffler assembly installation, refer to the ESM. Type “exhaust system” in the **Title Search** box, and then select the [Removal and Installation \(GT-R certified NISSAN dealer\)](#) link to the right of **TITANIUM MUFFLER**.

PARTS INFORMATION

| DESCRIPTION | PART NUMBER | QUANTITY |
|--|-------------|----------|
| VALVE ASSEMBLY-EXHAUST (electric control valve) | 20150-6AV0A | 1 |
| GASKET (both ends of electric control valve) | 20692-JF00B | 2 |
| BOLT (both ends of electric control valve) | 20606-6AV0A | 4 |
| NUT-FIX, EXHAUST TUBE (both ends of electric control valve) | 20602-6AV0A | 4 |
| GASKET-EXHAUST (main muffler to sub muffler) | 20692-JF00A | 1 |
| NUT-FLANGE, HEX (main muffler to sub muffler) | 08918-3401A | 2 |
| GASKET-EXHAUST (three way catalyst to sub muffler gasket) | 20692-24U00 | 2 |
| NUT-FIX, EXHAUST TUBE (three way catalyst to sub muffler) | 20602-41G0A | 4 |

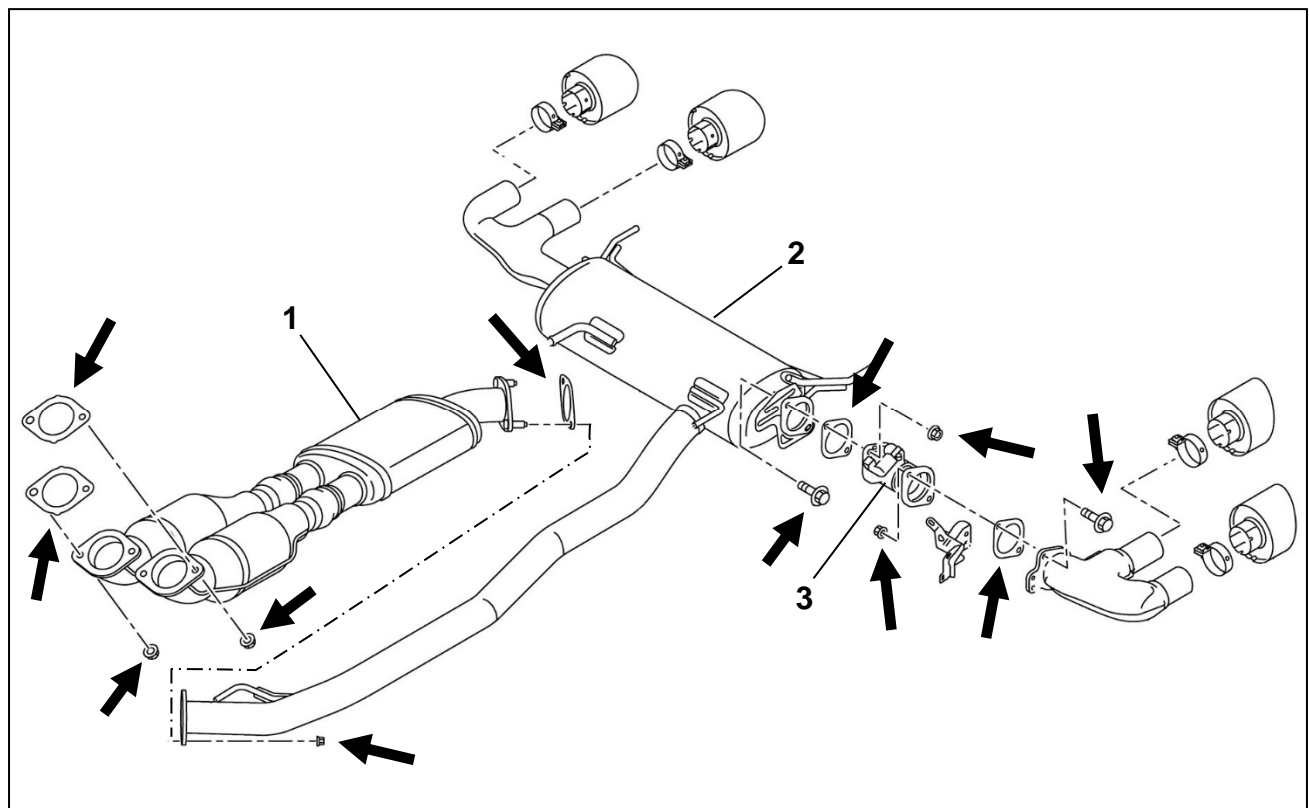


Figure 4

1. Sub muffler 2. Main muffler assembly 3. Electric control muffler

CLAIMS INFORMATION

Submit a Primary Part (PP) type line claim using the following claims coding:

If the ECM Software Is Not Current

| DESCRIPTION | PFP | OP CODE | SYM | DIA | FRT |
|----------------------------|-----|---------|-----|-----|---------|
| RPL Electric Control Valve | (1) | FD94AA | HC | 32 | (2) (3) |

OR

ECM Software is Current

| DESCRIPTION | PFP | OP CODE | SYM | DIA | FRT |
|---------------|-----|---------|-----|-----|---------|
| Reprogram ECM | (1) | DE97AA | HC | 32 | (2) (3) |

And if needed on the same line

| DESCRIPTION | PFP | OP CODE | SYM | DIA | FRT |
|----------------------------|-----|---------|-----|-----|---------|
| RPL Electric Control Valve | (1) | FD94AA | HC | 32 | (2) (3) |

- (1) Reference the Electronic Parts Catalog and use the Electric Control Valve (20150-*****) as the Primary Failed Part (PFP).
- (2) Reference the current Nissan Warranty Flat Rate Manual and use the indicated Flat Rate Time (FRT).
- (3) FRT allows adequate time to access DTC codes. No other diagnostic procedures subsequently required. Do NOT claim any Diagnostic Op Codes with this claim.

AMENDMENT HISTORY

| PUBLISHED DATE | REFERENCE | DESCRIPTION |
|------------------|------------|--|
| April 24, 2019 | NTB19-036 | Original bulletin published |
| February 3, 2021 | NTB19-036a | CLAIMS INFORMATION revised |
| June 13, 2023 | NTB19-036B | Title changed. Updated APPLIED VEHICLES and CLAIMS INFORMATION , and made changes in the body of the bulletin. Changed all occurrences of "NOTE" to "HINT" |