



QUALITY ACTION

CAMPAIGN BULLETIN

Rear Seatbelt Lower Anchor

Reference: PC936

Date: May 4, 2023

Attention: Dealer Principal, Sales, Service & Parts Managers

Affected Models/Years:	Affected Population:	Dealer Inventory:	SERVICE COMM Activation date:	Stop Sale In Effect:
MY2023 Rogue (T33)	NA	10	May 4, 2023	YES

*******Dealer Announcement*******

Nissan is updating the temporary Quality Assurance hold (PC936) on specific model year 2023 Rogue vehicles identified in Service Comm to a dealer inventory quality action to inspect and apply warning labels to the rear outboard seatbelt retractor assembly(ies) and at the lower seatbelt anchor bolt(s) as needed. These warning labels instruct on use of a special part kit for future service needs.

Affected vehicles are subject to stop sale and are either currently in dealer inventory or assigned and in transit to the dealer.

*******What Dealers Should Do*******

PLEASE FOLLOW THE ATTACHED INSTRUCTIONS:

1. Verify if vehicles are affected by this quality hold using Service Comm or DBS National Service History – Open Campaigns I.D. **PC936**
 - New vehicles in dealer inventory can also be identified using DBS (Sales-> Vehicle Inventory, and filter by Open Campaign).
 - Refer to NPSB 15-460 for additional information
 - **Some vehicles may still be in transit. Please continue to check newly arriving inventory for Quality Action applicability.**
2. Please **do not drive, loan, rent, sell or trade** the specific vehicles in dealer inventory subject to this quality action.
3. Use the attached procedure to remedy any vehicles affected by this quality action prior to sale.
4. Once remedied, dealers should submit the applicable warranty claim for the action performed so it can be closed in Service Comm and release the vehicle for sale.

NISSAN NORTH AMERICA, INC.

Total Customer Satisfaction



PC936 – ROGUE REAR SEATBELT LOWER ANCHOR

Service Procedure

1. Remove the rear seat bottom cushion.
 - Refer to Step 1 of the ESM: *BODY INTERIOR > SEAT > REMOVAL AND INSTALLATION > REAR SEAT > Removal and Installation*

2. Locate and inspect **BOTH** outboard lower seat belt anchor bolts.
 - For the bolt that is **SILVER** with a 18mm head, complete steps 3-17 for installing the seat belt labels and replacing the lower anchor bolt washer.
 - For the bolt that is **BLACK** with a 14mm head, **DO NOT install labels or replace the washer for that seat belt.**

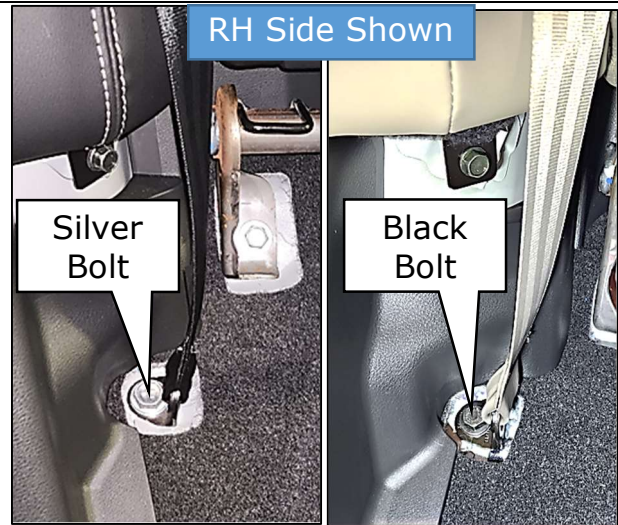


Figure 1

3. Remove the rear Side air bag (bolster) bolt shown in Figure 2.

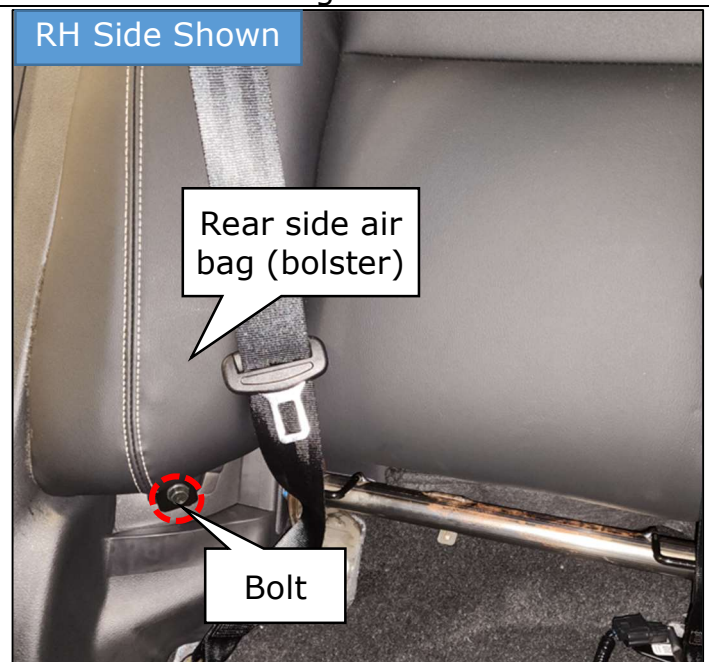


Figure 2

4. Lower the rear seat back assembly.



Figure 3

5. Remove the rear side air bag (bolster).
- Push the rear side air bag upward to disengage the upper retainer (Figure 4)
 - Do **NOT** disconnect the rear side air bag connector
 - Remove the rear side air bag and place next to the folded seatback as shown in Figure 5

CAUTION

Be careful to not damage the Rear side air bag harness and connector when performing repairs.



Figure 4



Figure 5

6. Partially remove the rear door body side welt (weather strip) as shown in Figure 6.



Figure 6

7. Lift the edge of the luggage side lower finisher to separate the retainers from the body as shown in Figure 7.



Figure 7

8. Carefully separate the luggage side lower finisher from the upper finisher as shown in Figure 8.



Figure 8

9. Remove one of the labels from the paper backing and apply one it to the seat belt retractor assembly as shown in Figure 9.

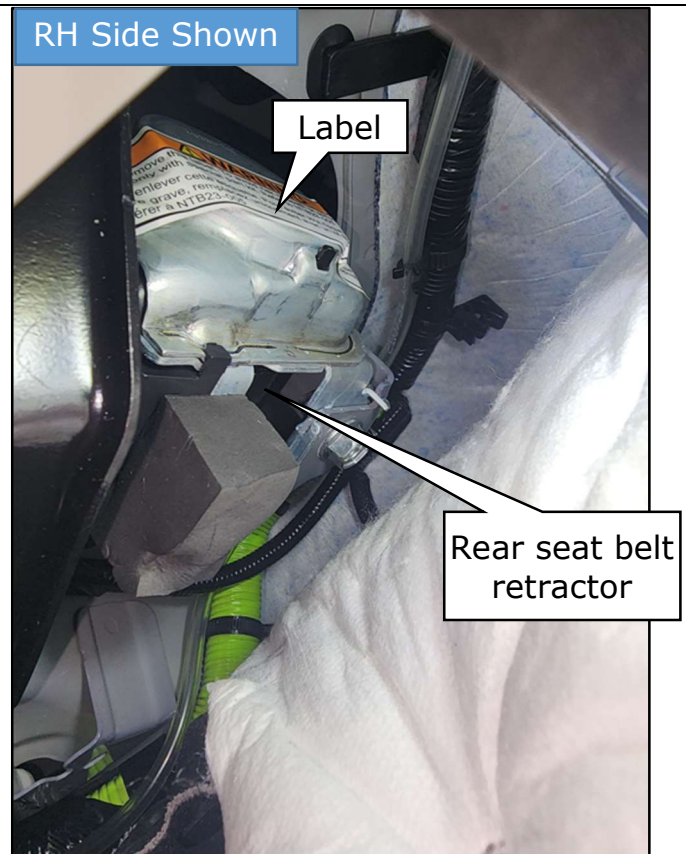


Figure 9

10. Reinstall the luggage side lower finisher.

11. Reinstall the rear door welt (weather strip).

12. Reinstall the rear side air bag (bolster).

- **IMPORTANT:** When reinstalling the rear side air bag (bolster), be sure the upper retainer is locked into place by pulling the upper side of the bolster inboard (toward the center of the vehicle).
- Raise the rear seat back
- Torque the bolt to 25 N•m (2.6kg-m, **18 ft-lb**)

13. Remove the Silver lower seat belt anchor bolt.

- Remove the anchor bolt and washer from the retainer bracket
- Discard the original washer

IMPORTANT:
Do NOT remove black anchor bolts.



Figure 10

14. Install new washer onto seat belt anchor bolt and install the bolt and washer onto the seat belt anchor plate.

- Remove the label paper backing
- Place the label hole around the anchor bolt hole as shown in Figure 11.
- Press the label down to adhere it to the body and carpet

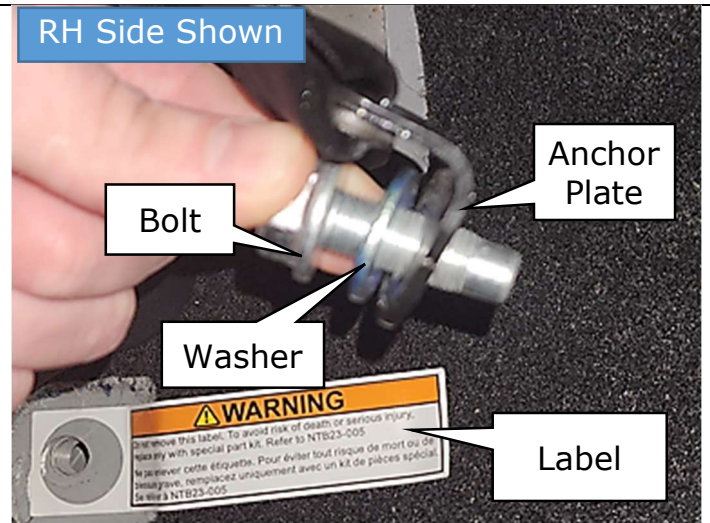


Figure 11

15. Reinstall the lower seat belt anchor.

- Make sure the Seat belt webbing is not twisted
- Make sure the Anchor plate is positioned parallel to the door opening as shown in Figure 12
- Torque to 85N•m (8.6kg-m, **63ft-lb**)



Figure 12

16. Reinstall the rear seat bottom cushion.

- Refer to Step 1 of the ESM: *BODY INTERIOR > SEAT > REMOVAL AND INSTALLATION > REAR SEAT > Removal and Installation*

Parts Information

Part Number	Description	Qty
98590-6RR0A	LABEL - SEAT BELT	2
08915-4421A	WASHER	1

Claims Information

Submit a "CM" line claim using the following claims coding:

Campaign ("CM") ID	Description	Op code	FRT
PC936	Install labels and replace washer	PC9360	0.3

