

## Field campaign

<b>Topic</b>	Software update to diagnostic address 0006 - Front passenger seat recline angle update (SC23/15)
<b>Market area</b>	Australia E04 Bentley rest Asia and Australia (6E04),China 796 VW Import Comp. Ltd (Vico), Beijing (6796),Germany E02 Bentley rest Europe (6E02),Japan E03 Bentley Japan (6E03),United Arab Emirates E06 Bentley Middle East and Africa (6E06),United Kingdom E01 Bentley UK (6E01),United States E05 Bentley USA and rest America (6E05)
<b>Brand</b>	Bentley
<b>Transaction No.</b>	2070443/1
<b>Campaign number</b>	EC80
<b>Note</b>	
<b>Type</b>	
<b>US code</b>	

## Vehicle data

### Bentayga extended wheel base

#### Sales types

Type	MY	Brand	Designation	Engine code	Gearbox code	Final drive code
ZV1*	2023	E		*	*	*

#### Chassis numbers

Manufacturer	Filler	Type	Filler	MY	Factory	From	To	Prod from	Prod to
SJA	*	*	*	P	*	017075	021961		

## Documents

Document name
<a href="#">master.xml</a>
<a href="#">sc2315vinlist.pdf</a>

## Notes

[Repair instructions](#)

### Technical background

A software update is available for diagnostic address 0006 - Front passenger seat control unit

The update relates to the reclining angle of the passenger front seat, currently the front passenger seat with footrest has a recline angle of 33 degrees.

Once the software update has been conducted the reclining angle of the passenger front seat will be 41 degrees

The driver seat will remain the same with a recline angle of 60 degrees

#### NOTICE

The passenger seat recline angle of 41 degrees is the maximum permissible travel which can be achieved due to the front passenger seat having the airline style footrest integrated into the passenger front seat assembly

### Remedy

The software update is required to be applied to diagnostic address 0006 - Front passenger seat control unit

### Customer notification

Please ensure the instructions within the procedure are conducted at the nearest opportunity, make a note of the required action on the workshop order before it is signed by the customer

If it is omitted to perform the work required during a workshop visit, the customer should be notified immediately

You should also pass on this information to your new and used car sales departments so that affected vehicles are checked and repaired immediately

### Warranty accounting instructions

Warranty type 710 or 790

Damage service number EC80

Damage code 00 66

Criterion ID 01

### Time to conduct the Software Version Management (SVM) updates

Labour operation code 01 51 00 00

Time As per ODIS log Must not exceed 30 Time units

### Genuine parts

Not applicable

### Parts supply

Not applicable

### Parts despatch control

Not applicable

---

## Repair instructions

[Notes](#)

### Technical background

A software update is available for diagnostic address 0006 - Front passenger seat control unit

The update relates to the reclining angle of the passenger front seat, currently the front passenger seat with footrest has a recline angle of 33 degrees.

Once the software update has been conducted the reclining angle of the passenger front seat will be 41 degrees

## NOTICE

The driver seat will remain the same with a recline angle of 60 degrees

The passenger seat recline angle of 41 degrees is the maximum permissible travel which can be achieved due to the front passenger seat having the airline style footrest integrated into the passenger front seat assembly

## Check

If the vehicle is not already listed as repaired in "Repair history" (in Elsa pro), check for the presence of the yellow paint completion mark as shown within the Identification section

If neither are evident please conduct the instructions within the Work section to completion

## Genuine parts

Not applicable

## Work

- The closed-circuit voltage of the vehicle must be at least 12.5 V during the update. Connect a suitable battery charger to the vehicle. For further information refer to the Repair manual
- During the update switch off all unnecessary consumers (ventilation, seat heater, interior illumination etc) ensure the main light switch is set to 'off' and leave the driver's door open
- Because of the highest transmission stability you **MUST** use the diagnosis interface VAS 6154 (WiFi diagnostic tool) **ONLY** in USB operation or the cable-connected VAS 5055 for the reprogramming (updating) of control units. If these units are not available, the diagnosis interface VAS 5054 (A) can also be used in USB mode
- Do Not under any circumstances use a Bluetooth connection to conduct the reprogramming (updating) of any control units
- The operative must ensure the ODIS version is 11.0.1 or later

## Software Version Management

1. Select and run Guided fault finding

- Referring to Figure 1 - Within the Special functions tab select SVM - Code Input (A) then select Perform test (B)

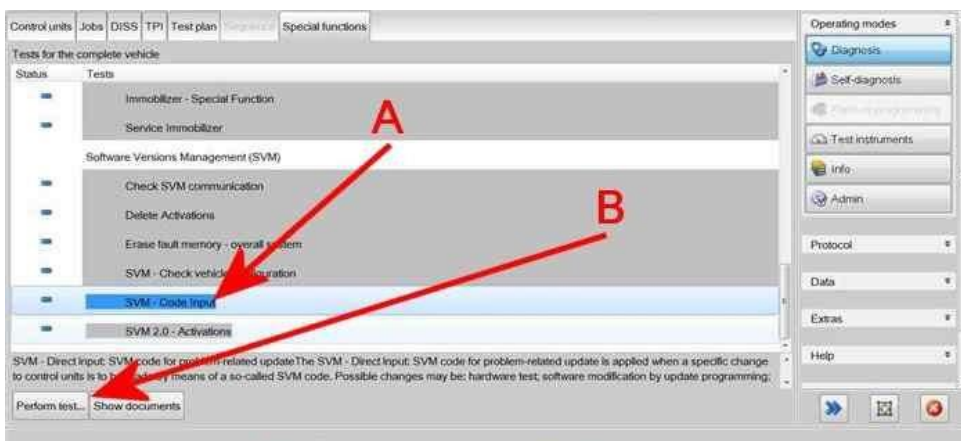


Figure 1

2. On the next screen enter the SVM code **4V10006FR02** and select Adopt (Figure 2)

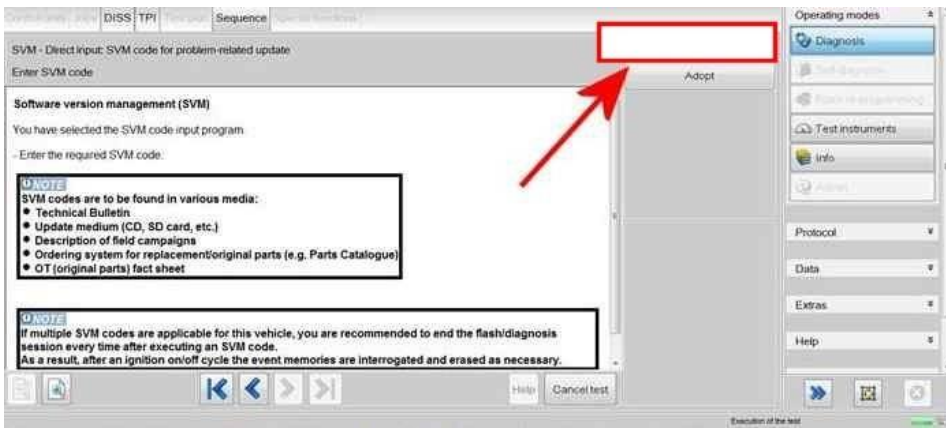


Figure 2

3. On the following screen, confirm the code - Then select Yes

- All control modules will be interrogated
- The SVM action will then take place

4. Follow all on screen prompts until program end

5. On completion - Switch off the ignition

- Remove the diagnostic interface from the OBD port
- Switch off and remove the battery charger from the vehicle
- Close the bonnet, boot and all doors
- Lock the vehicle
- Wait 5 minutes to allow the vehicle to go into bus silence
- When 5 minutes has elapsed, unlock the vehicle and open the driver's door
- Switch on the ignition

6. Following successful application of the SVM procedure - Run Basic settings to completion from 0006 guided functions

- Erase all applicable DTC's

7. Check to confirm the passenger seat is operational/reclining

8. Apply a yellow paint completion mark on the underside of the left hand rear door arrestor bracket (Figure 3)

## Identification

Yellow paint completion mark on the underside of the right hand rear door arrestor bracket (Figure 3)



Figure 3

## INTERNAL

SJAHT2ZV6PC017075	SJAH514V7PC017520	SJAH514V2PC017747	SJAHY14V2PC018081	SJAHL14V3PC018332
SJAHT2ZV3PC017079	SJAHT2ZV8PC017529	SJAHY14V3PC017750	SJAHY14V7PC018089	SJAHY14V7PC018335
SJAHT2ZV7PC017084	SJAHT2ZV3PC017535	SJAH514V8PC017753	SJAHY14V2PC018095	SJAHT2ZV8PC018339
SJAHT2ZV6PC017089	SJAHT2ZV9PC017538	SJAHL14V6PC017756	SJAHY14V0PC018113	SJAHT2ZVXPC018343
SJAHT2ZVXPC017094	SJAH514V4PC017541	SJAH514V9PC017759	SJAHY14V1PC018119	SJAHY14V2PC018355
SJAHT2ZV2PC017123	SJAHT2ZV6PC017545	SJAHT2ZVXPC017760	SJAHY14VXPC018121	SJAHT2ZV1PC018358
SJAHT2ZV7PC017134	SJAHT2ZV1PC017548	SJAHT2ZV6PC017769	SJAHY14V2PC018128	SJAH514V5PC018360
SJAHT2ZV6PC017142	SJAHT2ZV2PC017560	SJAHY14V0PC017771	SJAHY14VXPC018135	SJAHY14V7PC018366
SJAHT2ZV7PC017148	SJAH514V5PC017564	SJAH514V0PC017777	SJAHY14V3PC018137	SJAHT2ZV4PC018368
SJAHT2ZV8PC017160	SJAH514V0PC017570	SJAHT2ZV7PC017781	SJAHY14V7PC018139	SJAHT2ZV8PC018373
SJAHT2ZV5PC017164	SJAHT2ZV2PC017574	SJAH514V8PC017784	SJAHY14V7PC018142	SJAH514V7PC018375
SJAHT2ZV4PC017172	SJAH514V3PC017577	SJAH514V7PC017792	SJAHY14V0PC018144	SJAHY14V3PC018381
SJAHT2ZV2PC017185	SJAHT2ZV1PC017579	SJAHY14V3PC017795	SJAHY14V4PC018146	SJAH514V6PC018383
SJAHT2ZVXPC017189	SJAH514V3PC017580	SJAH514V4PC017801	SJAHY14V8PC018148	SJAHY14V2PC018386
SJAHT2ZV9PC017197	SJAH514V0PC017584	SJAH514VXPC017804	SJAHY14V3PC018154	SJAHT2ZV8PC018390
SJAHT2ZV7PC017201	SJAH514V6PC017587	SJAH514V4PC017815	SJAHT2ZV2PC018160	SJAHY14V8PC018392
SJAHT2ZV4PC017205	SJAH514V6PC017590	SJAH514V3PC017823	SJAHT2ZV1PC018165	SJAHT2ZV0PC018397
SJAHT2ZV1PC017209	SJAHT2ZV4PC017592	SJAH514V9PC017826	SJAHY14V1PC018170	SJAH514VXPC018399
SJAHT2ZV9PC017233	SJAHT2ZV8PC017594	SJAH514V4PC017832	SJAHY14V0PC018175	SJAHY14V9PC018403
SJAHT2ZV9PC017250	SJAHT2ZV3PC017597	SJAH514V1PC017836	SJAH514V3PC018177	SJAH514V1PC018405
SJAHT2ZV6PC017254	SJAHT2ZV7PC017599	SJAHT2ZV3PC017843	SJAHY14VXPC018183	SJAHY14VXPC018409
SJAHT2ZV9PC017264	SJAH514V7PC017601	SJAH514V6PC017850	SJAHT2ZV0PC018187	SJAHT2ZV1PC018411
SJAHT2ZV8PC017269	SJAHL14V5PC017604	SJAH514V3PC017854	SJAHT2ZV0PC018190	SJAHL14V7PC018415
SJAHT2ZVXPC017273	SJAH514V6PC017606	SJAH514V0PC017858	SJAHY14V0PC018192	SJAHY14V0PC018418
SJAHT2ZV7PC017277	SJAH514V1PC017609	SJAHY14V3PC017859	SJAHY14VXPC018197	SJAH514V1PC018422
SJAHT2ZV6PC017285	SJAH514V5PC017614	SJAH514V8PC017865	SJAHT2ZV3PC018202	SJAH514V7PC018425
SJAHT2ZV2PC017347	SJAH514V9PC017616	SJAHY14V8PC017873	SJAHY14V3PC018204	SJAHY14V3PC018428
SJAHT2ZV4PC017351	SJAH514V4PC017619	SJAHT2ZV9PC017877	SJAHT2ZV0PC018206	SJAHY14V7PC018433
SJAHT2ZV1PC017355	SJAH514V8PC017624	SJAHY14V7PC017881	SJAHY14V0PC018208	SJAH514V1PC018436
SJAHT2ZV9PC017359	SJAH514V0PC017634	SJAHY14V0PC017902	SJAH514VXPC018211	SJAH514V5PC018438
SJAHT2ZV0PC017363	SJAH514V4PC017636	SJAH514V9PC017910	SJAHY14V8PC018215	SJAHY14V6PC018441
SJAHT2ZV8PC017367	SJAHT2ZV8PC017644	SJAHY14V4PC017918	SJAHY14V1PC018217	SJAHL14V1PC018443
SJAH514VXPC017379	SJAHT2ZV1PC017646	SJAHY14VXPC017924	SJAHY14V1PC018220	SJAHT2ZV9PC018446
SJAHT2ZV4PC017382	SJAH514V3PC017658	SJAHT2ZV9PC017927	SJAHT2ZV0PC018223	SJAHY14V9PC018448
SJAHT2ZV8PC017384	SJAHL14V9PC017668	SJAHT2ZV2PC017929	SJAHY14V4PC018227	SJAH514V6PC018450
SJAHT2ZV3PC017387	SJAH514V6PC017671	SJAHY14V7PC017931	SJAHY14VXPC018233	SJAH514V1PC018453
SJAHT2ZV3PC017390	SJAH514V8PC017672	SJAHY14V8PC017937	SJAHY14V0PC018239	SJAHT2ZV3PC018457
SJAHL14V7PC017393	SJAHT2ZV8PC017675	SJAHY14V2PC017948	SJAHY14V0PC018242	SJAHT2ZV7PC018459
SJAHT2ZV7PC017408	SJAHT2ZV1PC017677	SJAHY14V8PC017954	SJAHY14V6PC018245	SJAHY14V1PC018461
SJAHT2ZV2PC017414	SJAH514V9PC017678	SJAHY14V5PC017961	SJAHY14VXPC018250	SJAH514V4PC018463
SJAHT2ZV1PC017422	SJAH514V9PC017681	SJAH514V5PC017967	SJAHT2ZV9PC018253	SJAH514V5PC018469
SJAH514V8PC017428	SJAHT2ZV9PC017684	SJAHY14V0PC017978	SJAHY14V0PC018256	SJAHT2ZV8PC018471
SJAHT2ZV2PC017431	SJAHT2ZV2PC017686	SJAHY14V6PC017984	SJAHY14V6PC018259	SJAHY14V8PC018473
SJAH514V3PC017434	SJAHT2ZV6PC017688	SJAHY14V1PC017990	SJAHT2ZV8PC018261	SJAHY14V5PC018477
SJAHT2ZV3PC017437	SJAH514V3PC017692	SJAH514V6PC017993	SJAHY14V5PC018267	SJAH514V6PC018481
SJAH514V2PC017439	SJAHT2ZV3PC017700	SJAH514VXPC018001	SJAHY14V9PC018269	SJAHY14V2PC018484
SJAH514V8PC017445	SJAHT2ZV7PC017702	SJAHY14V3PC018008	SJAHY14V9PC018272	SJAHY14VXPC018488
SJAH514V5PC017449	SJAHT2ZV2PC017705	SJAHY14V9PC018014	SJAHY14V4PC018275	SJAH514V0PC018492
SJAHT2ZV0PC017461	SJAH514V5PC017709	SJAHY14V6PC018018	SJAHY14V1PC018279	SJAHY14V9PC018496
SJAH514V2PC017473	SJAH514V1PC017710	SJAHY14V8PC018022	SJAHY14V0PC018287	SJAHT2ZV8PC018499
SJAHT2ZV4PC017477	SJAHT2ZV1PC017713	SJAHY14V3PC018025	SJAHY14V4PC018289	SJAHY14V2PC018503
SJAH514VXPC017480	SJAHT2ZV5PC017715	SJAHY14V7PC018027	SJAHY14V4PC018292	SJAHY14V1PC018511
SJAH514V0PC017486	SJAHT2ZV2PC017719	SJAHY14V0PC018029	SJAHY14VXPC018295	SJAHY14V7PC018514
SJAH514V6PC017489	SJAH514V8PC017722	SJAHY14V2PC018033	SJAHY14V1PC018301	SJAHT2ZV6PC018517
SJAHT2ZV0PC017492	SJAH514V7PC017727	SJAHY14V1PC018038	SJAHY14V7PC018304	SJAHY14V8PC018523
SJAH514V1PC017495	SJAHY14VXPC017728	SJAHY14VXPC018040	SJAHY14V0PC018306	SJAHL14V5PC018526
SJAHT2ZV1PC017498	SJAHT2ZV9PC017734	SJAHY14V0PC018046	SJAHY14V4PC018308	SJAHY14V9PC018529
SJAHT2ZV8PC017501	SJAH514V3PC017739	SJAHY14V2PC018050	SJAHY14V6PC018312	SJAHY14V2PC018534
SJAH514V9PC017504	SJAH514V1PC017741	SJAHY14V6PC018052	SJAHY14V5PC018317	SJAHT2ZV3PC018538
SJAH514V4PC017507	SJAH514V7PC017744	SJAHY14VXPC018054	SJAHT2ZV0PC018321	SJAHY14V5PC018544
SJAH514V7PC017517	SJAH514V9PC017745	SJAHY14V2PC018064	SJAH514V1PC018324	SJAH514V1PC018548

## INTERNAL

SJAHT2ZV8PC018552	SJAH514V2PC018767	SJAHT2ZV1PC018988	SJAHL1ZV9PC019221	SJAHL1ZVXPC019535
SJAHT2ZV3PC018555	SJAH514V4PC018771	SJAHY14VXPC018992	SJAHL1ZV7PC019234	SJAHL1ZV7PC019542
SJAHY14V3PC018557	SJAHT2ZV4PC018774	SJAHY14V5PC018995	SJAH514V2PC019238	SJAHY14V9PC019552
SJAHT2ZV7PC018560	SJAHT2ZVXPC018777	SJAHY14V9PC018997	SJAHY14V5PC019242	SJAHT2ZV8PC019555
SJAH514V4PC018561	SJAHY14V6PC018780	SJAHT2ZV6PC018999	SJAH514VXPC019245	SJAH514V9PC019558
SJAH514V8PC018563	SJAHT2ZVXPC018794	SJAH514V4PC019001	SJAHY14V6PC019248	SJAHT2ZV1PC019560
SJAH514V3PC018566	SJAHL14V5PC018798	SJAHT2ZV2PC019003	SJAH514V0PC019254	SJAH514V2PC019563
SJAHY14V6PC018567	SJAH514V9PC018801	SJAH514V1PC019005	SJAH514V8PC019258	SJAHL1ZV8PC019565
SJAHT2ZV3PC018569	SJAHY14V9PC018806	SJAHY14V6PC019007	SJAH514VXPC019262	SJAHT2ZV4PC019567
SJAHY14VXPC018572	SJAHT2ZV8PC018809	SJAHY14VXPC019009	SJAH514V5PC019282	SJAHL1ZV8PC019579
SJAH514V4PC018575	SJAHY14V6PC018813	SJAHT2ZV1PC019011	SJAHL14V3PC019285	SJAHL1ZV8PC019582
SJAH514VXPC018578	SJAHT24V8PC018817	SJAHY14V1PC019013	SJAHT2ZV2PC019289	SJAH514V1PC019585
SJAHY14V9PC018580	SJAH514V6PC018819	SJAHT2ZV4PC019021	SJAHY14V7PC019291	SJAH514V5PC019587
SJAHY14V2PC018582	SJAHT2ZV0PC018822	SJAHT2ZVXPC019024	SJAHY14V0PC019293	SJAHL1ZV9PC019588
SJAH514V7PC018585	SJAHT2ZV1PC018828	SJAHY14V3PC019028	SJAHY14V6PC019296	SJAHL1ZV7PC019590
SJAHY14V1PC018587	SJAHY14V8PC018831	SJAHL14V9PC019033	SJAHT2ZV1PC019302	SJAHT2ZV3PC019592
SJAHY14V5PC018589	SJAHT2ZV9PC018835	SJAH514V1PC019036	SJAHY14V1PC019304	SJAHY14V5PC019595
SJAH514V6PC018593	SJAHT2ZV4PC018838	SJAHY14V4PC019040	SJAHY14V5PC019306	SJAHL1ZV3PC019599
SJAHY14V4PC018597	SJAHY14V0PC018841	SJAHL1ZV1PC019049	SJAHY14V0PC019309	SJAH514V6PC019601
SJAHY14V0PC018600	SJAHT2ZV5PC018847	SJAHY14V5PC019063	SJAHY14V6PC019315	SJAH514VXPC019603
SJAH514V1PC018601	SJAHY14V5PC018849	SJAH514V1PC019067	SJAHY14V0PC019326	SJAHL1ZV7PC019606
SJAHY14V7PC018609	SJAHY14V5PC018852	SJAHL1ZV5PC019071	SJAHL1ZV9PC019333	SJAHT2ZV5PC019609
SJAH514VXPC018614	SJAHL14V4PC018856	SJAHY14VXPC019074	SJAHY14V1PC019335	SJAHL1ZV2PC019612
SJAHY14V4PC018616	SJAHY14V8PC018859	SJAHY14V3PC019076	SJAHT2ZV0PC019338	SJAHL1ZV5PC019619
SJAHY14V7PC018626	SJAH514V7PC018862	SJAHY14V7PC019081	SJAHT2ZV0PC019341	SJAHL1ZV3PC019621
SJAHT2ZV3PC018636	SJAHY14V1PC018864	SJAH514VXPC019083	SJAHY14V2PC019344	SJAH514V9PC019625
SJAHT2ZV8PC018647	SJAHT2ZV0PC018867	SJAHY14V1PC019089	SJAH514V5PC019346	SJAHL1ZV8PC019632
SJAHY14V4PC018650	SJAHY14V0PC018869	SJAH514V0PC019092	SJAH514V4PC019354	SJAH514V1PC019635
SJAH514V0PC018654	SJAHY14V0PC018872	SJAHY14V2PC019098	SJAHL1ZV1PC019357	SJAHY14V8PC019638
SJAH514V8PC018658	SJAHY14V6PC018875	SJAH514V8PC019101	SJAHY14V4PC019359	SJAH514V2PC019644
SJAHT2ZV8PC018664	SJAHL1ZV0PC018877	SJAHT2ZV3PC019110	SJAHY14V4PC019362	SJAHY14V0PC019665
SJAHT2ZV1PC018666	SJAHY14V7PC018884	SJAHT2ZV0PC019114	SJAHY14VXPC019365	SJAH514V9PC019673
SJAH514V2PC018672	SJAHY14V4PC018888	SJAHY14V4PC019118	SJAHL1ZV4PC019367	SJAHY14V0PC019679
SJAHT2ZV9PC018673	SJAHY14V6PC018892	SJAHT2ZV6PC019120	SJAHT2ZV7PC019370	SJAH514V0PC019688
SJAHY14V9PC018675	SJAH514V9PC018894	SJAHY14V6PC019122	SJAHL1ZV8PC019372	SJAH514V4PC019693
SJAHY14V6PC018679	SJAHK14V5PC018898	SJAH514V2PC019126	SJAHL1ZV3PC019375	SJAH514VXPC019696
SJAH514V7PC018683	SJAHT2ZV0PC018903	SJAH514V5PC019136	SJAH514V9PC019379	SJAHT2ZV7PC019708
SJAHY14V5PC018687	SJAHY14V0PC018905	SJAHY14V1PC019142	SJAHT2ZV5PC019402	SJAHT2ZV9PC019712
SJAHY14V9PC018689	SJAH514V5PC018908	SJAHY14V7PC019145	SJAHY14V9PC019406	SJAHL14V2PC019715
SJAHY14V7PC018691	SJAHY14V6PC018911	SJAHY14V2PC019148	SJAHL1ZV4PC019420	SJAHL1ZV6PC019726
SJAHT2ZV1PC018697	SJAH514V0PC018914	SJAHT2ZV4PC019150	SJAH514VXPC019424	SJAHK14V9PC019729
SJAHT2ZVXPC018701	SJAHT2ZV2PC018918	SJAHY14V2PC019151	SJAHL1ZV0PC019429	SJAH514VXPC019732
SJAH514V9PC018703	SJAH514V8PC018921	SJAHY14V8PC019154	SJAHL1ZV2PC019433	SJAHT2ZV0PC019744
SJAHT2ZV7PC018705	SJAH514V9PC018927	SJAHL14V5PC019157	SJAHL1ZVXPC019440	SJAHT2ZV6PC019747
SJAH514V6PC018707	SJAHY14V3PC018929	SJAHY14V3PC019160	SJAHY14V4PC019443	SJAHY14V2PC019750
SJAH514VXPC018709	SJAH514V4PC018933	SJAH514V6PC019162	SJAHY14V5PC019449	SJAHY14V3PC019756
SJAH514VXPC018712	SJAHY14V9PC018935	SJAHY14V2PC019165	SJAHL1ZV7PC019458	SJAH514V8PC019759
SJAHY14VXPC018717	SJAHT2ZV6PC018937	SJAHY14V8PC019168	SJAHL1ZV9PC019462	SJAHT2ZV2PC019762
SJAH514V0PC018721	SJAHT2ZV6PC018940	SJAHY14V8PC019171	SJAH514V0PC019464	SJAHY14V4PC019765
SJAH514V8PC018725	SJAHT2ZVXPC018942	SJAH514V0PC019173	SJAHT2ZV0PC019470	SJAH514V8PC019776
SJAHT2ZV8PC018728	SJAH514V0PC018945	SJAHY14V9PC019177	SJAHT2ZV4PC019486	SJAH514V3PC019779
SJAHY14V6PC018732	SJAHY14V5PC018947	SJAHT2ZV4PC019181	SJAHY14V6PC019489	SJAHY14VXPC019785
SJAHT24V6PC018735	SJAHY14V9PC018949	SJAHY14V4PC019183	SJAH514V7PC019493	SJAH514V4PC019788
SJAHT24V1PC018738	SJAHT2ZV3PC018958	SJAH514V2PC019188	SJAHL1ZV2PC019495	SJAH514V4PC019791
SJAH514V8PC018742	SJAHT2ZV5PC018962	SJAHY14V0PC019195	SJAH514V5PC019508	SJAHY14V0PC019794
SJAHT2ZV8PC018745	SJAHT2ZV0PC018965	SJAHY14V4PC019202	SJAH514V8PC019518	SJAH514V5PC019797
SJAHL14V1PC018748	SJAHT2ZV8PC018969	SJAHL14V5PC019207	SJAHT2ZV0PC019520	SJAH514V9PC019804
SJAHY14V5PC018754	SJAH514V5PC018973	SJAHY14V3PC019210	SJAH514VXPC019522	SJAH514V4PC019807
SJAH514VXPC018757	SJAHT2ZV3PC018975	SJAHY14V9PC019213	SJAH514V5PC019525	SJAHL1ZV6PC019810
SJAH514V1PC018761	SJAHL14V7PC018978	SJAHY14V4PC019216	SJAH514V9PC019527	SJAHY14V6PC019816
SJAH514V7PC018764	SJAHY14V0PC018984	SJAHY14VXPC019219	SJAHT2ZV3PC019530	SJAHT2ZV8PC019829

## INTERNAL

SJAHL1ZV9PC019834	SJAH514V7PC020188	SJAH514V4PC020648	SJAH514V2PC021166	SJAHY14V6PC021498
SJAHL14V5PC019837	SJAHT2ZV1PC020191	SJAH514VXPC020654	SJAH514V0PC021179	SJAH514V9PC021505
SJAHY14V3PC019840	SJAH514VXPC020198	SJAH514V7PC020658	SJAHT2ZV2PC021186	SJAHT2ZV9PC021508
SJAHY14V9PC019843	SJAHT2ZV0PC020201	SJAHT2ZV1PC020661	SJAH514V3PC021192	SJAH514V0PC021523
SJAH514V9PC019852	SJAHL1ZV3PC020204	SJAH514V8PC020667	SJAH514V7PC021194	SJAH514V1PC021532
SJAHY14V5PC019855	SJAHL1ZV9PC020207	SJAHT2ZV8PC020673	SJAHT2ZV0PC021199	SJAH514V5PC021534
SJAH514VXPC019858	SJAHT2ZV1PC020210	SJAH514V4PC020679	SJAH514V0PC021201	SJAHL1ZV4PC021538
SJAH514V4PC019869	SJAHL1ZV1PC020217	SJAH514VXPC020685	SJAHT2ZV9PC021203	SJAHY14V3PC021541
SJAHY14V7PC019873	SJAHY14V0PC020220	SJAHT2ZV4PC020699	SJAH514VXPC021206	SJAH514V6PC021543
SJAHL14V2PC019875	SJAHL1ZV2PC020226	SJAH514VXPC020704	SJAH514V1PC021210	SJAHL14V6PC021550
SJAH514V5PC019878	SJAHT2ZV0PC020229	SJAHT2ZV3PC020709	SJAHT2ZV1PC021213	SJAH514V7PC021552
SJAH514V3PC019880	SJAH514V6PC020232	SJAHT2ZV1PC020711	SJAHL1ZV8PC021218	SJAH514V4PC021556
SJAHL14VXPC019882	SJAHL1ZV5PC020236	SJAHT2ZV5PC020730	SJAHL1ZVXPC021222	SJAHL14V3PC021568
SJAH514V2PC019885	SJAHY14VXPC020239	SJAHY14V7PC020733	SJAHL1ZV3PC021224	SJAHL1ZV6PC021573
SJAHL14V9PC019887	SJAHL1ZV0PC020242	SJAH514V1PC020736	SJAH514VXPC021237	SJAH514V1PC021580
SJAHT2ZV2PC019891	SJAH514V4PC020245	SJAHY14V8PC020739	SJAHT2ZV4PC021240	SJAH514V7PC021583
SJAHY14V4PC019894	SJAHL1ZV1PC020248	SJAH514V8PC020751	SJAH514V7PC021244	SJAHL14V3PC021585
SJAHL1ZV0PC019897	SJAH514VXPC020251	SJAH514V8PC020765	SJAHY14V5PC021251	SJAH514V6PC021588
SJAHY14V3PC019899	SJAH514V5PC020254	SJAHY14V4PC020768	SJAH514V7PC021258	SJAH514V6PC021610
SJAHY14V1PC019903	SJAHL14V5PC020258	SJAH514V8PC020779	SJAH514V2PC021264	SJAHL14V8PC021615
SJAH514V6PC019906	SJAHT2ZV4PC020265	SJAH514V8PC020782	SJAH514V8PC021267	SJAHT2ZV0PC021624
SJAHL14V0PC019910	SJAHL1ZV4PC020289	SJAH514V9PC020791	SJAH514V3PC021273	SJAH514V5PC021632
SJAH514V1PC019912	SJAH514V0PC020307	SJAHY14V3PC020793	SJAH514V9PC021276	SJAHL14V3PC021635
SJAHL14VXPC019915	SJAH514VXPC020315	SJAHY14V9PC020796	SJAH514V4PC021279	SJAH514V6PC021638
SJAHL1ZV4PC019918	SJAH514V5PC020318	SJAHT2ZV8PC020799	SJAH514V3PC021290	SJAHY14V7PC021641
SJAHT2ZV2PC019924	SJAH514V9PC020323	SJAH514VXPC020802	SJAHT2ZV3PC021293	SJAHL1ZV2PC021649
SJAHL1ZV5PC019927	SJAHL14V7PC020326	SJAH514VXPC020816	SJAH514V4PC021296	SJAH514V5PC021677
SJAH514V3PC019930	SJAH514V3PC020348	SJAH514V5PC020819	SJAHY14V9PC021303	SJAH514V8PC021690
SJAH514V7PC019932	SJAHY14V6PC020352	SJAHT2ZV9PC020830	SJAHY14V2PC021305	SJAHT2ZV1PC021695
SJAH514V4PC019936	SJAHY14V4PC020365	SJAHL1ZV1PC020833	SJAH514V7PC021308	SJAHT2ZV2PC021706
SJAHT2ZV2PC019938	SJAHY14V3PC020373	SJAHL1ZV7PC020836	SJAHL14VXPC021311	SJAHL14V6PC021709
SJAHL1ZV1PC019942	SJAHY14V4PC020382	SJAH514V1PC020848	SJAH514V2PC021314	SJAH514V0PC021716
SJAHL1ZV7PC019945	SJAHT2ZV4PC020394	SJAHL14V2PC020878	SJAHT2ZV2PC021317	SJAH514V5PC021727
SJAH514V0PC019951	SJAHT2ZV1PC020451	SJAHL1ZV9PC020885	SJAHY14V3PC021328	SJAHT2ZV3PC021729
SJAHY14V7PC019954	SJAHY14V3PC020454	SJAHT2ZV0PC020909	SJAH514V8PC021334	SJAH514V9PC021732
SJAH514V3PC019958	SJAH514V7PC020465	SJAH514V6PC020912	SJAH514V9PC021343	SJAHL1ZV6PC021735
SJAH514V2PC019983	SJAHL1ZV1PC020475	SJAHL1ZV9PC020918	SJAH514V6PC021347	SJAH514V8PC021740
SJAHL1ZV5PC019992	SJAHY14V6PC020478	SJAHL1ZV5PC020933	SJAHY14VXPC021357	SJAH514V3PC021743
SJAHL1ZV5PC020009	SJAHT2ZV5PC020484	SJAHL1ZV6PC020942	SJAH514V5PC021369	SJAHY14VXPC021746
SJAHT2ZV8PC020012	SJAHY14V2PC020493	SJAHL1ZV7PC020948	SJAH514V2PC021376	SJAHT2ZV9PC021749
SJAH514V2PC020020	SJAHT2ZV1PC020496	SJAH514V6PC020957	SJAH514V3PC021385	SJAHT2ZV4PC021755
SJAH514V8PC020023	SJAH514V2PC020504	SJAHT2ZV0PC020960	SJAH514V9PC021388	SJAH514V5PC021758
SJAH514V5PC020027	SJAH514V1PC020512	SJAHT2ZV7PC020969	SJAHY14V7PC021395	SJAH514VXPC021772
SJAHT2ZV3PC020032	SJAHT2ZV7PC020518	SJAH514V3PC020981	SJAHT2ZV4PC021402	SJAHY14V8PC021776
SJAH514V4PC020035	SJAHT2ZVXPC020528	SJAHL1ZV3PC021000	SJAH514V5PC021405	SJAHY14V6PC021792
SJAHL1ZV3PC020056	SJAH514V0PC020534	SJAHY14V8PC021003	SJAHL14V3PC021408	SJAHT2ZV7PC021801
SJAH514V7PC020059	SJAH514V8PC020541	SJAHT2ZV2PC021009	SJAHT2ZV1PC021423	SJAHT2ZV8PC021807
SJAH514V2PC020065	SJAHT2ZV8PC020544	SJAH514V8PC021026	SJAHL14V9PC021428	SJAHT2ZV8PC021810
SJAH514V6PC020067	SJAH514V6PC020554	SJAH514V0PC021036	SJAHY14V0PC021433	SJAHL1ZV6PC021816
SJAHL1ZV1PC020069	SJAH514V1PC020560	SJAH514V7PC021082	SJAH514V2PC021443	SJAHY14V2PC021823
SJAHL1ZV2PC020081	SJAHT2ZV3PC020578	SJAH514V8PC021110	SJAHT2ZV0PC021445	SJAHY14V8PC021826
SJAH514V6PC020084	SJAH514V2PC020583	SJAH514V0PC021117	SJAHY14V0PC021450	SJAHT2ZV3PC021830
SJAHL1ZV0PC020094	SJAHT2ZV2PC020586	SJAH514V4PC021122	SJAHT2ZV5PC021456	SJAHT2ZV9PC021833
SJAHL14V5PC020115	SJAH514V3PC020589	SJAH514V5PC021128	SJAHK14V5PC021462	SJAH514VXPC021836
SJAHY14V4PC020124	SJAHL14V5PC020602	SJAH514V6PC021137	SJAH514V1PC021465	SJAHT2ZVXPC021842
SJAHL1ZV0PC020130	SJAH514VXPC020606	SJAH514V6PC021140	SJAH514V7PC021468	SJAHY14V5PC021847
SJAHL1ZV7PC020142	SJAH514V1PC020610	SJAH514V7PC021146	SJAH514V7PC021471	SJAHY14V5PC021850
SJAHT2ZV5PC020145	SJAH514V6PC020621	SJAH514V9PC021150	SJAH514V4PC021475	SJAH514V9PC021858
SJAH514V8PC020166	SJAH514V2PC020633	SJAHT2ZV9PC021153	SJAH514V1PC021482	SJAHT2ZV3PC021861
SJAHL1ZV5PC020169	SJAH514V8PC020636	SJAH514VXPC021156	SJAH514V2PC021491	SJAHT2ZV6PC021868
SJAH514V3PC020172	SJAH514V3PC020639	SJAH514V5PC021162	SJAH514V8PC021494	SJAHY14V5PC021878

INTERNAL

SJAH514V6PC021896	SJAH514V9PC021911	SJAHT2ZV7PC021927	SJAHT2ZV1PC021938	SJAHT2ZVXPC021954
SJAHT2ZV6PC021899	SJAH514V2PC021913	SJAHY14V9PC021933	SJAH514V0PC021943	SJAHY14V1PC021957
SJAH514V0PC021909	SJAHY14V8PC021924	SJ AHL14V4PC021935	SJAH514V1PC021949	SJAH514V2PC021961