



Countries: CANADA, UNITED STATES Document ID: IK2200153
 Availability: ISIS, Bus ISIS, FleetISIS, IsSIR Revision: 0
 Major System: BUS BODY Created: 5/10/2023
 Current Language: English Last Modified: 5/15/2023
 Other Languages: NONE Author: Brandon Akridge
 Viewed: 988

[Less Info](#)

Hide Details

Coding Information

Copy Link 	Copy Relative Link 	Bookmark View My Bookmarks	Add to Favorites 	Print 	Provide Feedback 	Helpful 5	Not Helpful 1
---------------	------------------------	---	----------------------	-----------	----------------------	------------------	----------------------

Title: Bus Roof Leaks

Applies To: Buses in Roof Recalls 23501 and 23502, and/or buses with an Advantage Roof Hatches built from 9/1/2021 to 1/23/23

CHANGE LOG

Please refer to the change log text box below for recent changes to this article:

05/12/2023 - Initial Article Release

DESCRIPTION

This document will guide the user through repairing potential roof water leaks caused by a defective roof joint as shown in Roof Joint Recall 23501 and 23502 (see the service portal to know if your bus is included in recall). It will also include repairs to potential roof hatch leaks on buses built between 9/1/21 and 1/23/23 with Advantage Roof Hatches (features 48UZT, 48UZW, 48UZN, 48UZP, 48UZR, 48UZS, 48UZU, 48UZV).

SYMPTOM(s)

Customer Observations or Concerns:

Water leaks on the interior roof panels at roof bow and/or roof hatch locations.

SPECIAL TOOL(s) / SOFTWARE

N/A

Tool Description	Tool Number	Comments	Instructions

SERVICE PARTS INFORMATION

Kit Description	Part Number	Quantity Required	Notes
Sealant, White, 11 oz. Tube (Purchase Online)	Dicor 501LSW	as needed	for rivets and roof hatches
Sealant, Yellow, 11 oz. Tube (Direct Ship)	810000KK	as needed	for rivets and roof hatches
Screw, washer head self tap 1/4" x 1 1/4"	443569001	20 per hatch	roof hatch only

DIAGNOSTIC STEP(s)

Step	Action	Decision
#1	DIAGNOSTIC: Is your bus part of recall 23501 or 23502, see example in Figure 1, and have joints that have been found to be non-compliant?	Yes. Go to repair instructions for roof joint repair and proceed to step 2.
		No. Proceed to step 2.

Step	Action	Decision
#2	DIAGNOSTIC: Does your bus have an Advantage Roof Hatch and built prior to 1/23/23 and experiencing water leaks, see Figure 2?	Yes. Proceed to repair section on roof hatch repairs.
		No. This iKnow article does not apply.

--	--	--


Managed Repair Information 	
Open Recalls:	1. 23501 SCHOOL BUS NONCOMPLIANCE TO FMVSS 221 (Open)

Figure #1: Roof Joint Recall

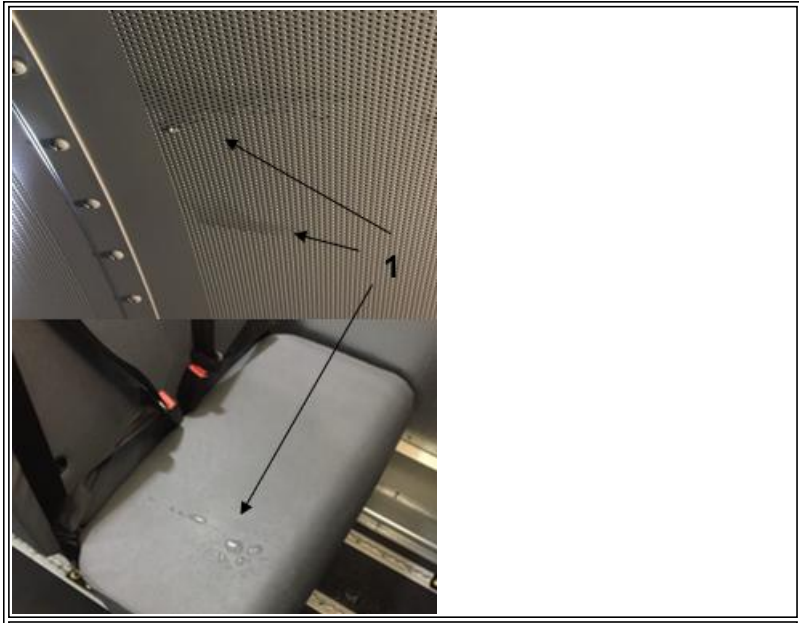




Figure #2: Roof Hatch Leak

Item 1: Water starts on ceiling in hatch area and ends on seats or floor

REPAIR STEP(s)

 WARNING:
To prevent personal injury and / or death, or property damage, park vehicle on hard flat surface, turn the engine off, set the parking brake and install wheel chocks to prevent the vehicle from moving in both directions.

 WARNING:
To prevent personal injury and / or death, always wear safe eye protection when performing vehicle maintenance.

! WARNING:

To prevent personal injury and / or death, or property damage, keep flames or sparks away from vehicle and do not smoke while servicing the vehicle's batteries. Batteries expel explosive gases.

! WARNING:

To prevent personal injury and / or death, or damage to property, work on a level scaffold of appropriate size and / or wear a safety harness in good working condition. IC Bus[®], LLC recommends the use of a fall protection system and / or scaffolding to perform this service procedure. Consult your OSHA representative for guidance.

ROOF JOINT REPAIR PROCEDURE:

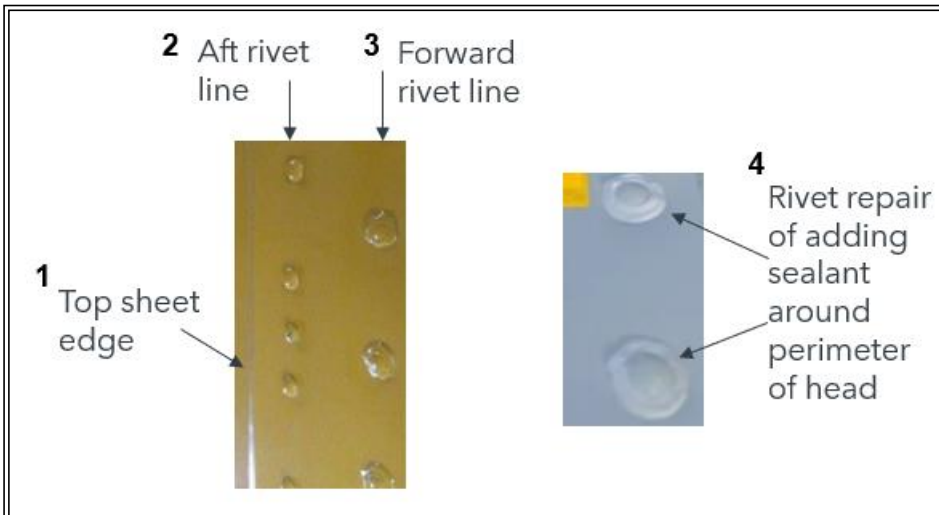


Figure #3: Roof Joint Leak Repair

- Item 1: Top Sheet Edge
- Item 2: Aft Rivet Line
- Item 3: Forward Rivet Line
- Item 4: Rivet Repair

1. Locate forward rivet line as shown in Figure 3.
2. Add matching roof color sealant to perimeter of rivet head as shown in Figure 3 Item 4.
3. Repeat step 2 for each rivet in forward rivet line of non-compliant joint area.
4. Repeat Steps 2 and 3 for each non-compliant joint.

ROOF HATCH REPAIR PROCEDURE:

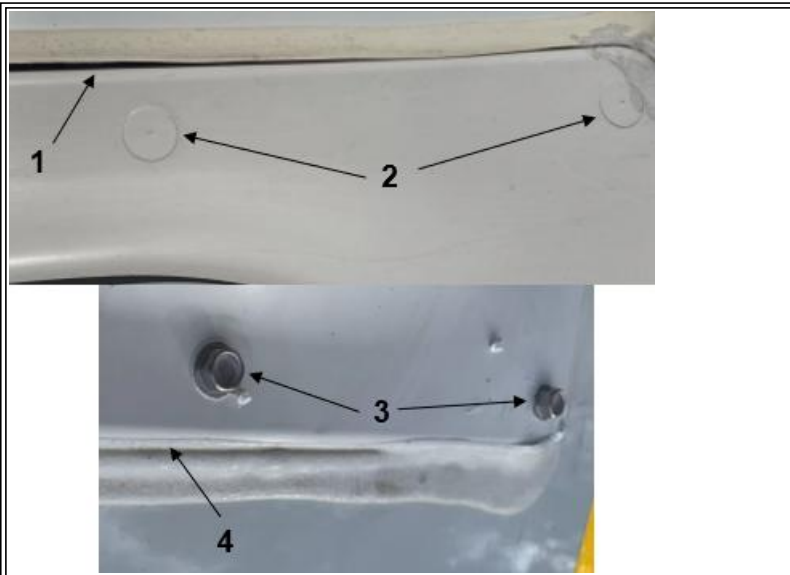


Figure #4: Roof Hatch Repair

- Item 1: Sealant gap or void
- Item 2: Mounting screw location circles
- Item 3: Mounting screws installed
- Item 4: Sealant installed in previous gap

1. Locate mounting circles around the perimeter of the hatch, see Figure 4 item 2. There will be 20 locations.
2. Drill a .213 (#3) hole and then install screws, see Figure 4 item 3, tighten to 5 to 7 ft lbs. Be careful not to strip screws or deform the mounting flange of the hatch.
3. Inspect roof hatch for sealant voids or gaps, see Figure 4 item 1.
4. Add matching color sealant to void or gap.

WARRANTY INFORMATION

Warranty Claim Coding:

Refer to the [Warranty Coding Manual](#) for Group and Noun Codes.

Standard Repair Time(s):

Refer to the [SRT Manual](#) for Repair Times

OTHER RESOURCES

[Master Service Information Site](#)

 Hide Details

Feedback Information

Viewed: 987
Helpful: 5
Not Helpful: 1

No Feedback Found