

**ATTENTION:**

GENERAL MANAGER ☐  
 PARTS MANAGER ☐  
 CLAIMS PERSONNEL ☐  
 SERVICE MANAGER ☐

IMPORTANT - All  
 Service Personnel  
 Should Read and  
 Initial in the boxes  
 provided, right.

© 2022 Subaru of America, Inc. All rights reserved.




**SUBARU.**

**QUALITY DRIVEN® SERVICE**

## SERVICE BULLETIN

**APPLICABILITY:** 2020-23MY Legacy & Outback  
 2023MY Ascent

**NUMBER:** 07-213-22R

**DATE:** 11/16/22

**SUBJECT:** Genuine Battery Replacement

**REVISED:** 05/16/23

### INTRODUCTION:

This bulletin announces a new Genuine Subaru Replacement battery for use in applications where the current SOA821B700 battery is specified. The new replacement battery (**SOA821B900**) has higher capacity but is also slightly larger dimensionally. When replacing an original equipped battery (**SOA821B700**) with the new SOA821B900, additional parts and slight modification will be required to ensure proper positioning and secure retention. Please refer to work procedures outlined below.

### PART INFORMATION:

**REMINDER:** Always order the most up-to-date replacement parts based on the specific VIN being repaired.

Part Description	Part Number
Battery	SOA821B900

Part Description	Part Number
TRAY-BATTERY	82122CA000
ROD-BATTERY FIX	82161SJ000*
HOLDER-BATTERY FIX	82184SG000
<b>GROMMET SHEET</b>	<b>909230046</b>
* The original rod nut must be retained for reuse.	

**IMPORTANT NOTE:** All the parts listed above must be ordered through PRIME.

### SERVICE PROCEDURE / INFORMATION:

Please review the battery identification, charging, and testing information provided in Service Bulletin **07-178-21** prior to performing any battery testing and/or charging. **ALWAYS** confirm the Midtronics equipment being used has the latest software available.

**IMPORTANT:** The original battery holder, battery tray, and rear holding rod are to be returned to the customer.

**CAUTION: VEHICLE SERVICING PERFORMED BY UNTRAINED PERSONS COULD RESULT IN SERIOUS INJURY TO THOSE PERSONS OR TO OTHERS.**

Subaru Service Bulletins are intended for use by professional technicians ONLY. They are written to inform those technicians of conditions that may occur in some vehicles, or to provide information that could assist in the proper servicing of the vehicle. Properly trained technicians have the equipment, tools, safety instructions, and know-how to do the job correctly and safely. If a condition is described, DO NOT assume that this Service Bulletin applies to your vehicle, or that your vehicle will have that condition.

**Subaru of America, Inc. is  
 ISO 14001 Compliant**

ISO 14001 is the international standard for excellence in Environmental Management Systems. Please recycle or dispose of automotive products in a manner that is friendly to our environment and in accordance with all local, state and federal laws and regulations.

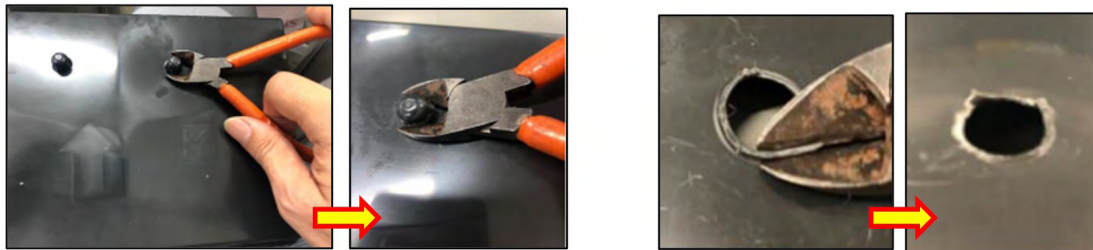
*Continued...*

**STEP 1:** Refer to the applicable Service Manual and review: General Description > Repair Contents > Action required before & after Battery Disconnect. Additionally, record any stored seat position(s) before proceeding. Relearn any seat position memory after work is complete. If the power rear gate (PRG) height has been customized, that position must also be noted and relearned.

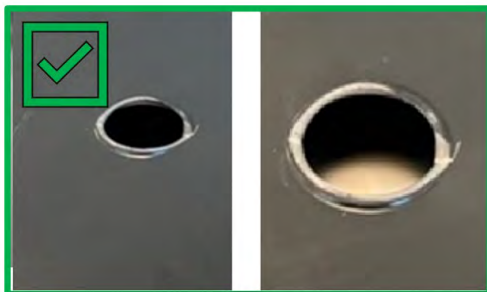
**STEP 2:** Remove the battery as per the applicable Service Manual: Engine > STARTING/CHARGING SYSTEMS > Battery > Removal.

**STEP 3:** Prepare the replacement battery tray (p.n. 82122CA000) for installation:

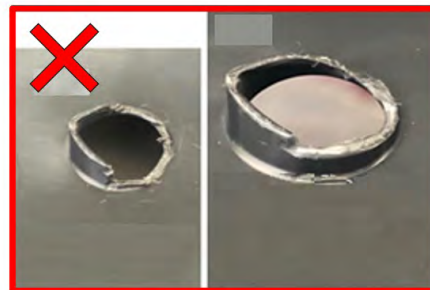
- A. CAREFULLY** cut off and trim the two protrusions on the bottom of the battery tray. This will allow a proper fit when installed. Try to make the cut as flush as possible.



**CAUTION:** Be sure the protrusions are trimmed flush. The remaining protrusion height **MUST** be less than 2mm to provide proper fitment.



Remaining Height Is Less Than 2mm



Remaining Height Is More Than 2mm

- B.** Remove the original battery tray. **DO NOT** discard as this must be returned to the customer.



*Continued...*

**C.** Cover the newly made holes with the grommet sheets (p.n. 909230046).



**D.** Securely fit the replacement battery tray to the vehicle.



**STEP 4:** Install the original battery cover to the new replacement battery. Confirm the bottom of the cover is aligned flush with the bottom of the battery.



*Continued...*

**STEP 5:** Assemble the new battery holder (p.n. 82184SG000), NEW rear holding rod (p.n. 82161SJ000), and the **ORIGINAL** front holding rod as shown below. The original rod nut can be transferred to the new rear holding rod.



**IMPORTANT:** DO NOT discard the original holder and rear rod. These parts are to be returned to the customer.

**STEP 6:** Install the battery as per the applicable Service Manual: Engine > STARTING/CHARGING SYSTEMS > Battery > Installation

**STEP 7:** Install the battery holder and holding rods on to the battery.

- A. Torque the two holding rod mounting nuts to **3.5 N·m (2.6ft-lbs. or 31inch-lbs.)**.
- B. Torque the positive terminal to **6 N·m (4.4ft-lbs. or 53inch-lbs.)**.
- C. Torque the negative terminal to **7.5Nm (5.5ft.-lbs. or 66inch-lbs.)**.
- D. If the battery sensor is removed or disconnected torque to 7.5Nm (5.5ft.-lbs. or 66inch-lbs.) while supporting the sensor with the other hand as outlined in the applicable Service Manual under: STARTING/CHARGING SYSTEMS > Battery Sensor.

**CRITICAL:** Confirm the battery holder is center mounted with the battery cables secured and routed correctly.



*Continued...*



## WARRANTY / CLAIM INFORMATION:

For vehicles within the Basic New Car Limited Warranty period, this repair may be submitted using the following claim information:

Legacy & Outback Labor Description	Labor Operation #	Labor Time	Fail Code
START-STOP BATTERY TEST & REPLACE	B800-002	0.5	FFF-42
ADD TIME; MOUNTING HARDWARE R&R	C800-055	0.2	

Ascent Labor Description	Labor Operation #	Labor Time	Fail Code
ENHANCED FLOODED BATTERY TEST & REPLACE	B800-103	0.5	FFI-42
ADD TIME; MOUNTING HARDWARE R&R	C800-055	0.2	

**NOTE: A valid battery test code or an authorization with reason Leaking/cracked battery will be required for Claim submission.**

## IMPORTANT REMINDERS:

- SOA strongly discourages the printing and/or local storage of service information as previously released information and electronic publications may be updated at any time.
- Always check for any open recalls or campaigns anytime a vehicle is in for servicing.
- Always refer to STIS for the latest service information before performing any repairs.