

REFERENCE:	TSB: 09-003-23 REV. A GROUP 09 - Engine	Date:	April 14, 2023	REVISION:	09-003-23
VEHICLES AFFECTED:	<p>2013 - 2016 (PF) Dodge Dart 2014 - 2019 (KL) Jeep Cherokee 2015 - 2018 (VM) RAM ProMaster City 2015 - 2018 (BU) Jeep Renegade 2015 - 2017 (UF) Chrysler 200 2016 - 2018 (FB) FIAT 500X 2017 - 2018 (MP) Jeep Compass</p> <p>This bulletin applies to the following vehicles below equipped with a 2.4L I4 Multiair Engine (Sales Code ED6), 2.4L I4 PZEV Multiair Engine (Sales Code ED8), 2.4L I4 PZEV Multiair Engine W/ESS (Sales Code EDE) or a 2.4L I4 Multiair Engine W/ ESS (Sales Code EDD).</p> <ul style="list-style-type: none"> • KL vehicles built on or before August 25, 2018 (MDH 0825XX). • MP vehicles built on or before August 04, 2018 (MDH 0804XX). • VM vehicles built on or before August 08, 2018 (MDH 0808XX). • BU vehicles built on or before December 07, 2018 (MDH 1207XX). 	MARKET APPLICABILITY:			
CUSTOMER SYMPTOM:	<p>The customer may describe one or more of the following:</p> <ul style="list-style-type: none"> • Oil pressure low indicator lamp illumination between oil changes. • Excessive oil consumption. 				
CAUSE:	Interactive deceleration fuel shut off calibration.				
		<input checked="" type="checkbox"/> NA <input type="checkbox"/> MEA <input type="checkbox"/> SA <input type="checkbox"/> IAP <input type="checkbox"/> EE <input type="checkbox"/> CH NOTE: This TSB does not cover Canada and Mexico.			

This bulletin supersedes Technical Service Bulletin (TSB) 09-003-23, date of issue January 25, 2023, which should be removed from your files. All revisions are highlighted with ****asterisks**** and include updated parts table, Test Procedure step and Repair Procedure Note.

Customer Symptoms that are related to this Technical Service Bulletin are included within the W20, W84 or W80 Customer Satisfaction Notifications. Please confirm W20 or W84 or W80 have been performed prior to proceeding with this Warranty Extension.

REPAIR SUMMARY:

This bulletin involves performing an oil consumption verification test and possibly replacing the long block.

CLAIMS DATA:

Labor Operation No:	Labor Description	Skill Category	Labor Time
09-00-00-9A	Oil Consumption Test (0 - Introduction)	1 - Engine Repair and Performance	0.5 Hrs.
09-01-70-9A	Long Block, 2.4-Liter Multiair Engine - Replace (VM Models Only) (3 - Highly Skilled)	1 - Engine Repair and Performance	9.3 Hrs.
09-01-70-9B	Long Block, 2.4-Liter Multiair Engine - Replace (BU/FB Models Only) (3 - Highly Skilled)	1 - Engine Repair and Performance	7.6 Hrs.

Labor Operation No:	Labor Description	Skill Category	Labor Time
09-01-70-9C	Long Block, 2.4-Liter Multiair Engine - Replace (KL Models Only) (3 - Highly Skilled)	1 - Engine Repair and Performance	9.4 Hrs.
09-01-70-9D	Long Block, 2.4-Liter Multiair Engine - Replace (PF Models Only) (3 - Highly Skilled)	1 - Engine Repair and Performance	10.1 Hrs.
09-01-70-9E	Long Block, 2.4-Liter Multiair Engine - Replace (UF Models Only) (3 - Highly Skilled)	1 - Engine Repair and Performance	12.2 Hrs.
09-01-70-9F	Long Block, 2.4-Liter Multiair Engine - Replace (MP Models Only) (3 - Highly Skilled)	1 - Engine Repair and Performance	10.0 Hrs.
Failure Code	ZZ	Service Action	

RELATED LOPS:

Labor Operation No:	Labor Description	Skill Category	Labor Time
09-01-70-60	4x4/AWD Equipped BU Vehicles (3 - Highly Skilled)	1 - Engine Repair and Performance	0.3 Hrs.
09-01-70-60	4x4/AWD Equipped KL Vehicles (3 - Highly Skilled)	1 - Engine Repair and Performance	1.2 Hrs.
09-01-70-62	4x4/AWD Equipped MP Vehicles (3 - Highly Skilled)	1 - Engine Repair and Performance	0.7 Hrs.
07-FF-01-50	Drain and Fill BU Vehicles (3 - Highly Skilled)	1 - Engine Repair and Performance	0.7 Hrs.
09-01-70-60	4x4/AWD Equipped FB Vehicles (3 - Highly Skilled)	4 - Chassis Systems	0.4 Hrs.
02-00-03-50	Toe Adjustment/Steering Wheel Center KL Vehicles (3 - Highly Skilled)	4 - Chassis Systems	0.5 Hrs.
09-01-70-64	Manual Transmission Equipped PF Vehicles (3 - Highly Skilled)	1 - Engine Repair and Performance	0.6 Hrs.
02-00-01-50	Front End Align MP Vehicles (3 - Highly Skilled)	1 - Engine Repair and Performance	0.7 Hrs.

09-FF-03-50	Drain and Fill MP Vehicles (3 - Highly Skilled)	1 - Engine Repair and Performance	0.1 Hrs.
-------------	---	--------------------------------------	----------

SPARE PARTS:

Qty	Part No.	Description	Notes
1 (AR)	05048356AB	Engine, Long Block (MP) 2.4L Aisin FWD	
1 (AR)	CCSKW801AA	2.4L Long Block (Kit)	
1 (AR)	CCSKW802AA	2.4L Long Block Miscel- laneous Parts (Kit)	
1 (AR)	CCSKW803AA	Drive Shaft Bearing Kit AWD (Kit)	
(AR)	68163848AB	1 Gallon Bottle, Anti- freeze (MSQ 4), MS-12106, MS-90032	
(AR)	68088485AB	1 Pint Bottle, Fluid, Power Steering (MSQ 6) MS-11655	
(AR)	68523994AA	1 Quart Bottle, Oil, Engine SAE 0W-20 (MSQ 6) MS-6395	

DIAGNOSIS:

Using a Scan Tool (wiTECH) with the appropriate Diagnostic Procedures available in DealerCONNECT/ Service Library, verify all related systems are functioning as designed. If Diagnostic Trouble Codes (DTCs) or symptom conditions, other than the ones listed above are present, record the issues on the repair order and repair as necessary before proceeding further with this bulletin.

If the customer describes the symptom/condition listed above, perform the 2.4L Engine Oil Consumption Test Procedure.

The following Engine Oil Consumption Test is used to determine the source of excessive internal oil consumption.

NOTE: A few drops of external oil leakage per km/mi, can quickly account for the loss of one quart of oil in a few hundred km/mi. Ensure no external engine oil leaks are present. Oil leakage is not the same as oil consumption and all external leakage must be eliminated before any action can be taken to verify and/or correct oil consumption complaints.

1. Verify no external engine oil leaks are present.
2. Are any external engine oil leaks present?
 - YES>>> This bulletin does not apply. Normal diagnosis should be performed and all external oil leaks should be repaired before performing the oil consumption test.
 - NO>>> Proceed to [Step 3](#).

3. Ensure the test vehicle has a minimum of 2,400 km (1,500 mi) until the next oil change is required. If the vehicle does not have 2,400 km (1,500 mi) wait until the scheduled oil change to start the test.
4. Check the oil level at least five minutes after a hot shutdown with the vehicle on a level surface.
5. Ensure the oil level is at the "FULL" mark, if necessary top off the oil to the "FULL" mark on the dipstick (Fig. 1) .

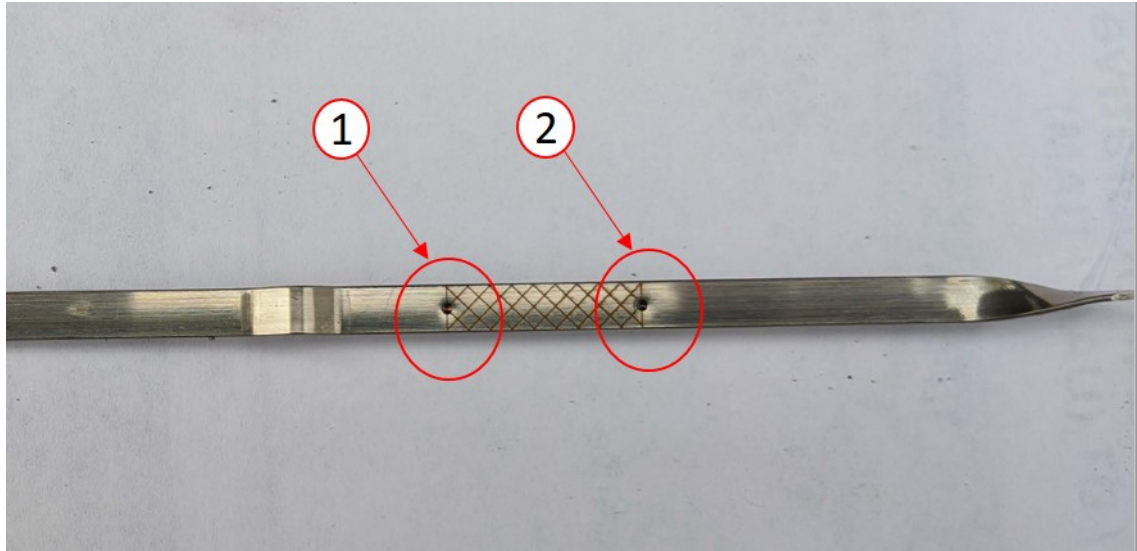


Fig. 1
Oil Dipstick Levels

1 - "FULL" Level Mark

2 - "ADD" Level Mark

NOTE: The use of a black light marking device is recommended so the marks can only be seen with a ultraviolet light.

6. Tamper proof the oil pan drain plug, oil filter, dipstick and oil fill cap with a black light marking device (pen), paint pen or touch-up paint.
7. Record the vehicle mileage. Note the oil level is at the 'full' mark (Fig. 1) five minutes after hot shutdown and date.
8. Instruct the customer to drive the vehicle as usual.

NOTE: Failure to confirm the oil level between 2,400 - 2,700 km (1,500 - 1,700 mi) voids the test and requires a new test to be performed.

9. Require the customer to return to the servicing dealer after accumulating between 2,400 - 2,700 km (1,500 -1,700 mi).
10. Return the vehicle back to the customer for the 2,400 - 2,700 km (1,500 - 1,700 mi) test drive. This bulletin has been completed, use the LOP (09-00-00-9A) to close the bulletin. No further action is needed at this time.
11. When the vehicle returns for the remaining steps, verify that no evidence of tampering has happened.
12. Check the oil level at least five minutes after a hot shutdown on a level surface. If the oil level is at or above the "ADD" mark, the engine is in an acceptable condition and no further service action required (Fig. 1) .
13. ****If the oil level is below the "ADD" mark (Fig. 1) , please submit a digital imaging request to Powertrain Service Center with a copy of the repair order, maintenance records, oil consumption documentation, serial number and Repair/Replace Worksheet for authorization for a long block replacement approval.****

REPAIR PROCEDURE:

NOTE: **Perform this Repair Procedure only after long block replacement approval has been obtained from Powertrain Service Center, in [Step 13](#).**

1. Did the vehicle fail the **2.4L Engine Oil Consumption Test**?
 - YES>>> Proceed to [Step 2](#).
 - NO>>> This bulletin has been completed.
2. Replace the long block. Refer to the detailed service procedures available in DealerCONNECT/Service Library under: Service Info>09 - Engine, 2.4L Multiair / Removal and Installation.

POLICY:

Vehicles included in this Technical Service Bulletin have a Warranty Extension to seven years or 160,934 km (100,000 mi) (whichever occurs first) from the In Service Date of the Class Vehicle. See Warranty Bulletins: U.S. D-23-01 and Puerto Rico/Virgin Islands ID-23-01 for details associated with the Warranty Extension.

This bulletin is supplied as technical information only and is not an authorization for repair. No part of this publication may be reproduced, stored in a retrieval system, or transmitted, in any form or by any means, electronic, mechanical, photocopying, or otherwise, without written permission of FCA US LLC.