



# TECHNICAL SERVICE BULLETIN

## Door(s) Do Not Open From The Exterior Handle

**23-2156**

18 May 2023

This bulletin supersedes 22-2246.

### Model:

<b>Ford</b> 2021-2023 Bronco Sport
2020-2023 Escape
2022-2023 Maverick
<b>Lincoln</b> 2020-2023 Corsair

### Summary

This article supersedes TSB 22-2246 to update the vehicle model years affected.

**Issue:** Some 2020-2023 Escape/Corsair, 2021-2023 Bronco Sport and 2022-2023 Maverick vehicles may exhibit a condition where the door(s) do not open using the exterior door handle(s). This may be due to an enabled permanent engagement inertia lock within the exterior door handle; this condition occurs when the doors are closed or opened with excessive force. To correct this condition, follow the Service Procedure to properly disengage the permanent engagement inertia lock clip to allow the exterior door handle(s) to fully extend and open the door(s) from the exterior.

**Action:** Follow the Service Procedure to correct the condition on vehicles that meet all the following criteria:

- One of the following vehicles:
  - 2020-2023 Escape/Corsair
  - 2021-2023 Bronco Sport
  - 2022-2023 Maverick
- Door(s) do not open using the exterior door handle(s)

### Parts

Service Part Number	Quantity	Description	Unit of Issue	Piece Quantity
W721069-S300	4	Front And Rear Door Trim Panel Pins (2020-2023 Escape)	4	13
W713297-S300	3	Front And Rear Door Trim Panel Pins (2020-2023 Corsair)	4	10

**Warranty Status:** Eligible under provisions of New Vehicle Limited Warranty (NVLW)/Service Part Warranty (SPW)/Special Service Part (SSP)/Extended Service Plan (ESP) coverage. Limits/policies/prior approvals are not altered by a TSB. NVLW/SPW/SSP/ESP coverage limits are determined by the identified causal part and verified using the OASIS part coverage tool.

### Labor Times

Description	Operation No.	Time
2020-2023 Escape: Disengage The Permanent Engagement Inertia Lock Clip Following The Service Procedure One (1) Front Door (Do Not Use With Any Other Labor Operations Out Side Of This Article) (Can Be claimed With Operation C Or D)	232156A	0.9 Hrs.
2020-2023 Escape: Disengage The Permanent Engagement Inertia Lock Clip Following The Service Procedure Both (2) Front Doors (Do Not Use With Any Other Labor Operations Out Side Of This Article) (Can Be claimed With Operation C Or D)	232156B	1.6 Hrs.

2020-2023 Escape: Disengage The Permanent Engagement Inertia Lock Clip Following The Service Procedure One (1) Rear Door (Do Not Use With Any Other Labor Operations Out Side Of This Article) (Can Be claimed With Operation A Or B)	232156C	0.7 Hrs.
2020-2023 Escape: Disengage The Permanent Engagement Inertia Lock Clip Following The Service Procedure Both (2) Rear Doors (Do Not Use With Any Other Labor Operations Out Side Of This Article) (Can Be claimed With Operation A Or B)	232156D	1.2 Hrs.
2020-2023 Corsair: Disengage The Permanent Engagement Inertia Lock Clip Following The Service Procedure One (1) Front Door (Do Not Use With Any Other Labor Operations Out Side Of This Article) (Can Be claimed With Operation G Or H)	232156E	0.9 Hrs.
2020-2023 Corsair: Disengage The Permanent Engagement Inertia Lock Clip Following The Service Procedure Both (2) Front Doors (Do Not Use With Any Other Labor Operations Out Side Of This Article) (Can Be claimed With Operation G Or H)	232156F	1.6 Hrs.
2020-2023 Corsair: Disengage The Permanent Engagement Inertia Lock Clip Following The Service Procedure One (1) Rear Door (Do Not Use With Any Other Labor Operations Out Side Of This Article) (Can Be claimed With Operation E Or F)	232156G	0.7 Hrs.
2020-2023 Corsair: Disengage The Permanent Engagement Inertia Lock Clip Following The Service Procedure Both (2) Rear Doors (Do Not Use With Any Other Labor Operations Out Side Of This Article) (Can Be claimed With Operation E Or F)	232156H	1.2 Hrs.
2021-2023 Bronco Sport: Disengage The Permanent Engagement Inertia Lock Clip Following The Service Procedure One (1) Front Door (Do Not Use With Any Other Labor Operations Out Side Of This Article) (Can Be claimed With Operation L Or M)	232156J	0.9 Hrs.
2021-2023 Bronco Sport: Disengage The Permanent Engagement Inertia Lock Clip Following The Service Procedure Both (2) Front Doors (Do Not Use With Any Other Labor Operations Out Side Of This Article) (Can Be claimed With Operation L Or M)	232156K	1.6 Hrs.
2021-2023 Bronco Sport: Disengage The Permanent Engagement Inertia Lock Clip Following The Service Procedure One (1) Rear Door (Do Not Use With Any Other Labor Operations Out Side Of This Article) (Can Be claimed With Operation J Or K)	232156L	0.7 Hrs.
2021-2023 Bronco Sport: Disengage The Permanent Engagement Inertia Lock Clip Following The Service Procedure Both (2) Rear Doors (Do Not Use With Any Other Labor Operations Out Side Of This Article) (Can Be claimed With Operation J Or K)	232156M	1.2 Hrs.
2022-2023 Maverick: Disengage The Permanent Engagement Inertia Lock Clip Following The Service Procedure One (1) Front Door (Do Not Use With Any Other Labor Operations Out Side Of This Article) (Can Be claimed With Operation Q Or R)	232156N	0.9 Hrs.
2022-2023 Maverick: Disengage The Permanent Engagement Inertia Lock Clip Following The Service Procedure Both (2) Front Doors (Do Not Use With Any Other Labor Operations Out Side Of This Article) (Can Be claimed With Operation Q Or R)	232156P	1.6 Hrs.
2022-2023 Maverick: Disengage The Permanent Engagement Inertia Lock Clip Following The Service Procedure One (1) Rear Door (Do Not Use With Any Other Labor Operations Out Side Of This Article) (Can Be claimed With Operation N Or P)	232156Q	0.7 Hrs.
2022-2023 Maverick: Disengage The Permanent Engagement Inertia Lock Clip Following The Service Procedure Both (2) Rear Doors (Do Not Use With Any Other Labor Operations Out Side Of This Article) (Can Be claimed With Operation N Or P)	232156R	1.4 Hrs.

### Repair/Claim Coding

Causal Part:	78219A64
Condition Code:	42

### Service Procedure

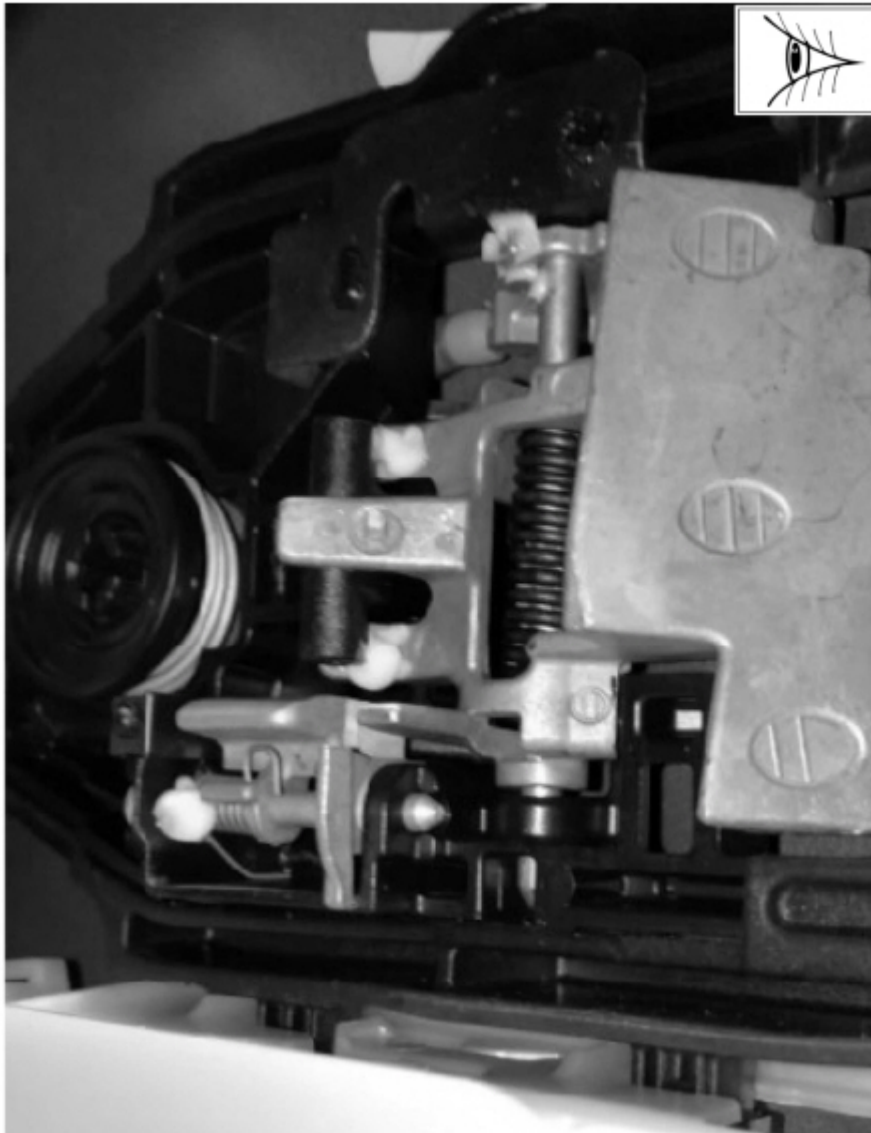
1. Remove the front and/or rear door trim panel(s) on the affected door(s). Refer to Workshop Manual (WSM), Section 501-05 > Interior Trim and Ornamentation > Removal and Installation.

**NOTE: If a rear door cannot be opened from inside, the child lock may need to be disengaged.**

2. Remove the front/rear window regulator and motor. Refer to WSM, Section 501-11 Frames and Mechanisms > Removal and Installation.

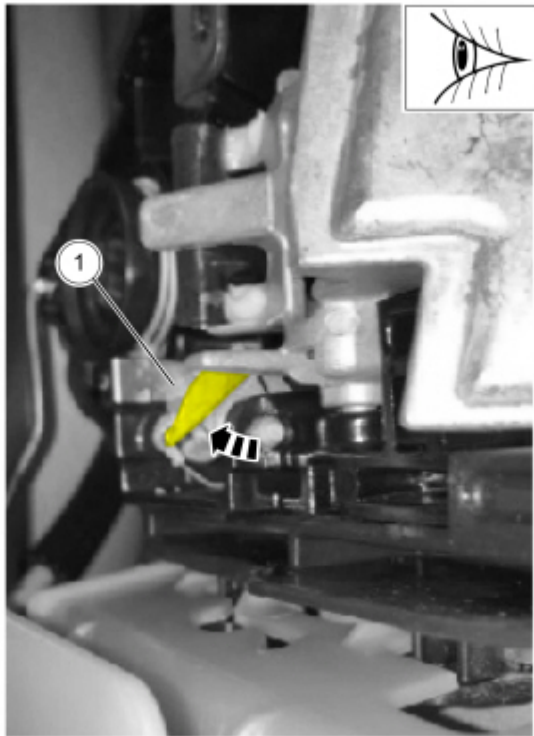
3. Inspect the exterior door handle reinforcement for permanent engagement inertia lock clip engaged and the inertia lock rotated outboard (Figures 1-2). Is the inertia lock rotated outboard and the permanent engagement inertia lock clip engaged?

Figure 1



E389047

Figure 2



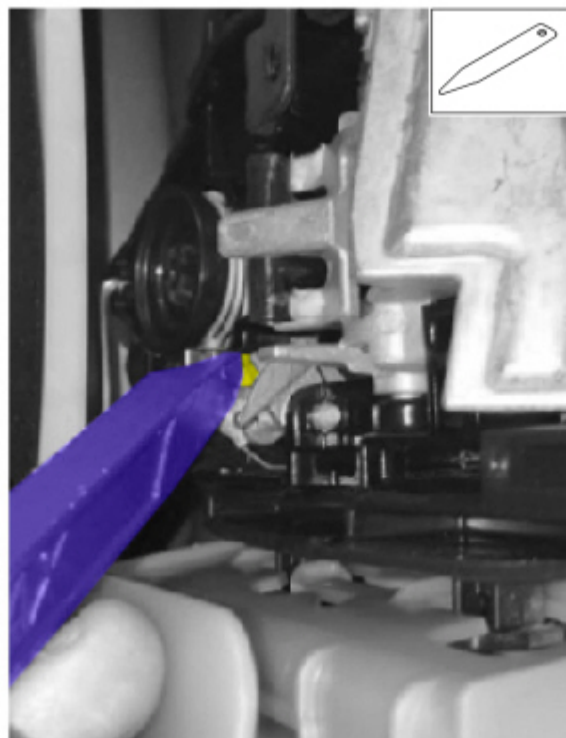
E389048

(1). Yes - proceed to Step 4.

(2). No - this article does not apply. Refer to WSM, Section 501-14 > Handles, Locks, Latches and Entry Systems > Diagnosis and Testing > Pinpoint Test B.

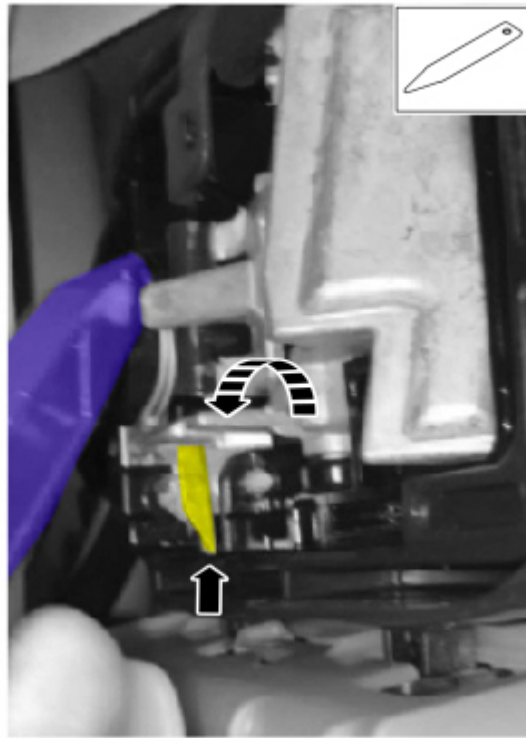
4. Use a small flat head screwdriver to depress the permanent engagement inertia lock clip and allow the inertia lock to rotate inboard to the rest position. (Figures 3-4).

Figure 3



E389049

Figure 4



E389050

5. Verify that the exterior door handle now fully extends when pulled and the door opens from the outside.
6. Reinstall the window regulator and motor. Refer to WSM, Section 501-11 > Glass, Frames and Mechanisms > Removal and Installation.
7. Reinstall the front/rear door trim panel(s). Refer to WSM, Section 501-05 > Interior Trim and Ornamentation > Removal and Installation.

---

© 2023 Ford Motor Company

All rights reserved.

NOTE: The information in Technical Service Bulletins is intended for use by trained, professional technicians with the knowledge, tools, and equipment to do the job properly and safely. It informs these technicians of conditions that may occur on some vehicles, or provides information that could assist in proper vehicle service. The procedures should not be performed by "do-it-yourselfers". Do not assume that a condition described affects your car or truck. Contact a Ford or Lincoln dealership to determine whether the Bulletin applies to your vehicle. Warranty Policy and Extended Service Plan documentation determine Warranty and/or Extended Service Plan coverage unless stated otherwise in the TSB article. The information in this Technical Service Bulletin (TSB) was current at the time of printing. Ford Motor Company reserves the right to supersede this information with updates. The most recent information is available through Ford Motor Company's on-line technical resources.