



TECHNICAL SERVICE BULLETIN

Classification: AT23-001	Reference: NTB23-030	Date: April 4, 2023
-----------------------------	-------------------------	------------------------

CVT SHIFT SELECTOR LEVER KNOB REMOVAL AND INSTALLATION

APPLIED VEHICLES: 2019-2023 Altima (L34)
2020-2023 Sentra (B18)

APPLIED TRANSMISSIONS: CVT

SERVICE INFORMATION

If the CVT Shift Selector Lever Knob needs to be removed or installed for any reason, refer to the **SERVICE PROCEDURE** in this bulletin, beginning on page 2.

Bulletins are intended for use by qualified technicians, not 'do-it-yourselfers'. Qualified technicians are properly trained individuals who have the equipment, tools, safety instruction, and know-how to do a job properly and safely. **NOTE:** If you believe that a described condition may apply to a particular vehicle, DO NOT assume that it does. See your Nissan dealer to determine if this applies to your vehicle.

EXPLODED VIEW

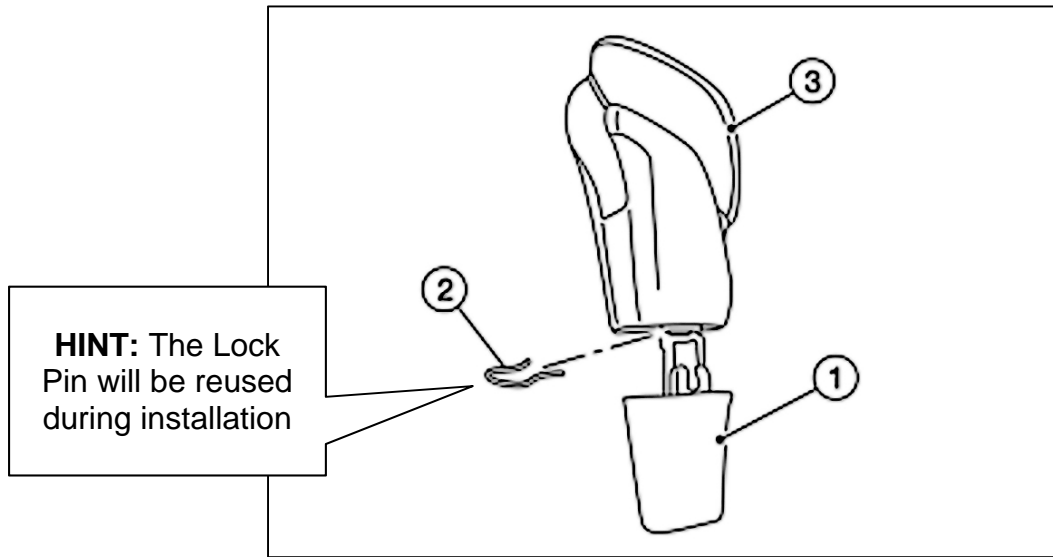


Figure 1

1	Shift Selector Lever Finisher Boot	2	Lock Pin	3	CVT Shift Selector Lever Knob
----------	------------------------------------	----------	----------	----------	-------------------------------

SERVICE PROCEDURE

CVT Shift Selector Lever Knob Removal

1. Slide the Shift Selector Lever Finisher Boot down.

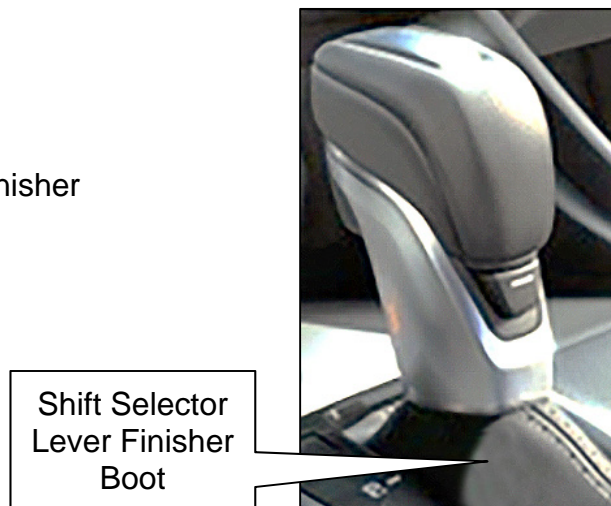


Figure 2

- Using a suitable tool, pull the Lock Pin forward and remove it.

HINT: The Lock Pin will be reused during the installation process. Do not damage or lose the Lock Pin.

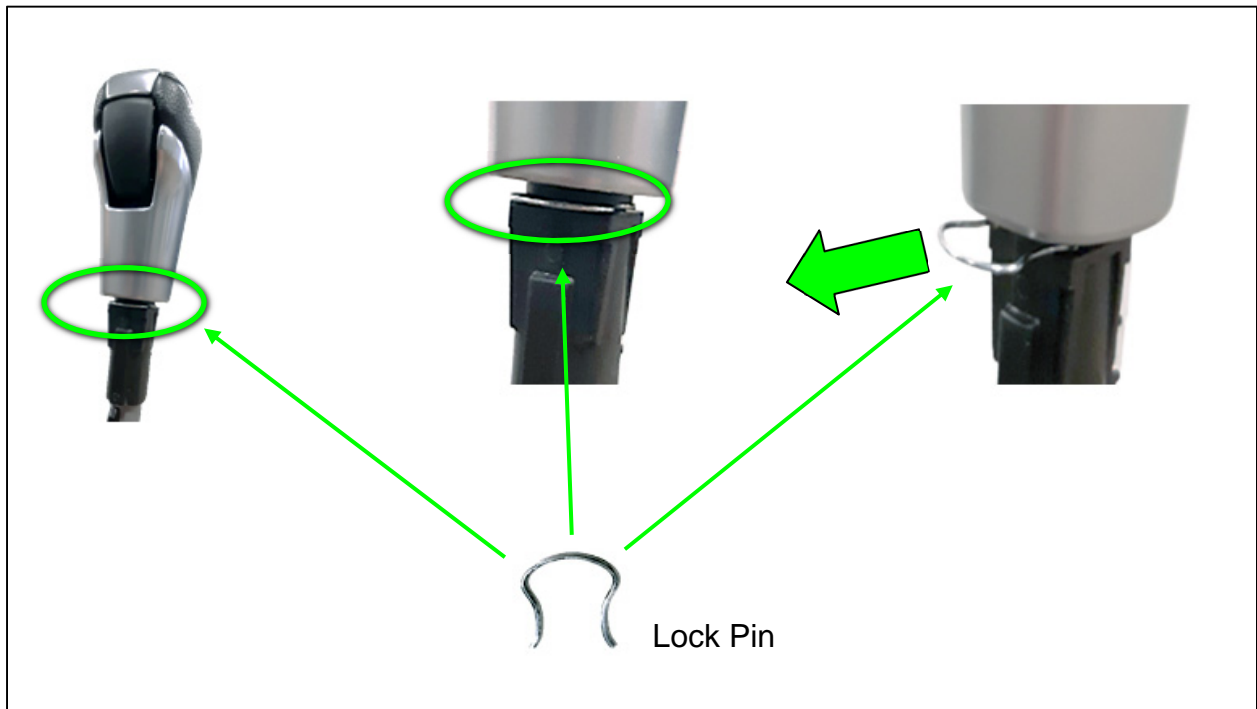


Figure 3

- Pull the CVT Shift Selector Lever Knob upward to remove it.



Figure 4

CVT Shift Selector Knob Installation

4. In the upper shaft area of the CVT Shift Selector Lever Knob, locate the Lock Pin slot.

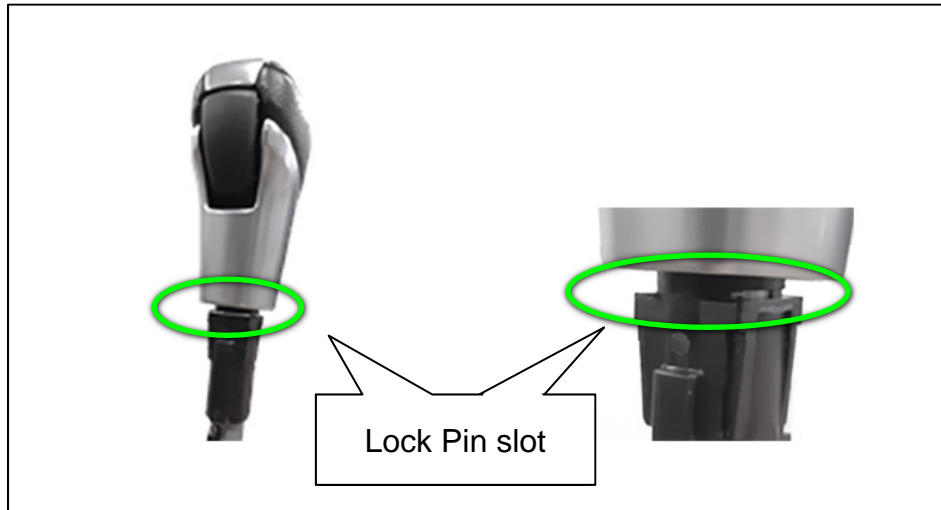


Figure 5

5. Insert the Lock Pin into the slot from the front of the CVT Shift Selector Lever Knob backwards, until it clicks.
 - If the Lock Pin is lost or damaged, replace it with the one listed in **PARTS INFORMATION**.

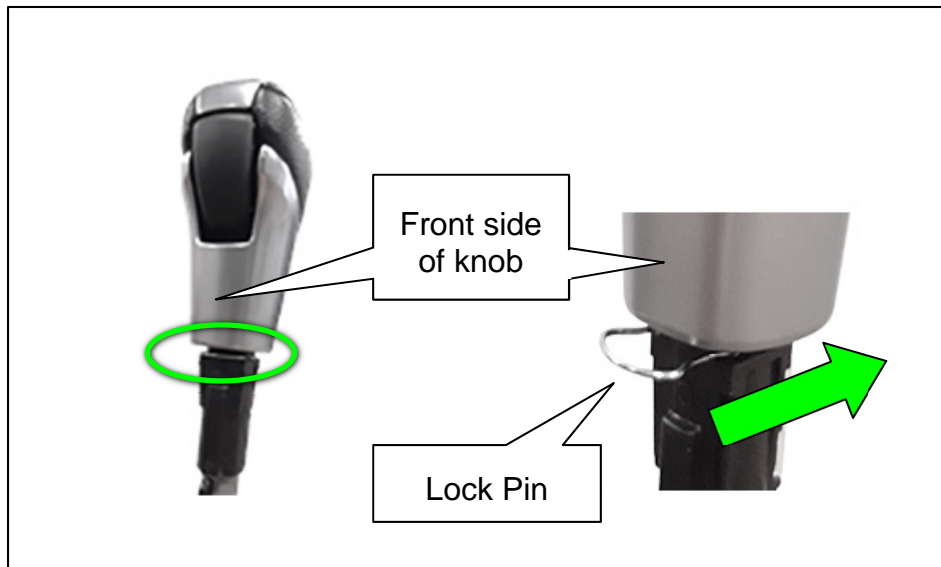


Figure 6

IMPORTANT:

- Do not place the Lock Pin in any area other than the Lock Pin slot.
- Do not insert the Lock Pin from the back of the CVT Shift Selector Lever Knob.
- Confirm that the Lock Pin is placed correctly before installing the CVT Shift Selector Lever Knob onto the Selector Lever.

6. Install the CVT Shift Selector Lever Knob onto the Selector Lever and push it downward until it clicks.



Figure 7

7. Pull the CVT Shift Selector Lever Knob upward and confirm it does not come off.
 - Perform steps 4-7 again if the CVT Shift Selector Lever Knob does come off.
8. Slide the Shift Selector Lever Finisher Boot upward until it clicks.

PARTS INFORMATION

DESCRIPTION	PART NUMBER	QUANTITY
KNOB ASSY – CONTROL LEVER, AUTO	34910-6CB2A	1 As needed
SPRING – RETURN, BUTTON (Lock Pin)	34922-6CA0A	1 As needed

CLAIMS INFORMATION

Submit a Primary Part (PP) type line claim using the following claims coding:

DESCRIPTION	PFP	OP CODE	SYM	DIA	FRT
Replace Control Lever Knob	(1)	JE12AA	(2)		(3)

- (1) Reference the electronic parts catalog and use the Control Lever Knob (34910-*****) as the Primary Failed Part (**PFP**).
- (2) Use Symptom and Diagnosis code appropriate for the repair performed.
- (3) Reference the current Nissan Warranty Flat Rate Manual and use the indicated Flat Rate Time (**FRT**).

AMENDMENT HISTORY

PUBLISHED DATE	REFERENCE	DESCRIPTION
April 4, 2023	NTB23-030	Original bulletin published