



# TECHNICAL SERVICE BULLETIN

Classification: DA22-008A	Reference: NTB23-011A	Date: April 19, 2023
------------------------------	--------------------------	-------------------------

## "FORWARD DRIVING AIDS BLOCKED" MESSAGE ON INSTRUMENT PANEL WITH DTC C2582-97 STORED IN LASER/RADAR CONTROL UNIT

This bulletin has been amended. See AMENDMENT HISTORY on the last page.  
Please discard previous versions of this bulletin.

**APPLIED VEHICLES:** 2021-2023 Rogue (T33)

### IF YOU CONFIRM

The message "Forward Driving Aids Blocked" is displayed on the Instrument Panel with DTC C2582-97 (Distance sensor) stored in the LASER/RADAR control unit,

### AND

Contamination, salt residue, foreign matter or snow is present between the inside surface of the Front Bumper Fascia and front surface of the Distance Sensor.

### ACTION

Install the Distance Sensor Bracket & Grill Tape Service Kit following the **SERVICE PROCEDURE** starting on page 2.

**IMPORTANT:** The purpose of **ACTION** (above) is to give you a quick idea of the work you will be performing. You **MUST** closely follow the entire **SERVICE PROCEDURE** as it contains information that is essential to successfully completing this repair.

Bulletins are intended for use by qualified technicians, not 'do-it-yourselfers'. Qualified technicians are properly trained individuals who have the equipment, tools, safety instruction, and know-how to do a job properly and safely. **NOTE:** If you believe that a described condition may apply to a particular vehicle, **DO NOT** assume that it does. See your Nissan dealer to determine if this applies to your vehicle.

## SERVICE PROCEDURE

1. Remove the Front Grille.
  - Refer to the ESM: **BODY EXTERIOR, DOORS, ROOF & VEHICLE SECURITY > EXTERIOR > REMOVAL AND INSTALLATION > FRONT GRILLE > Removal and Installation**
2. If present, wipe off any contamination, salt residue, foreign matter or snow from the surfaces of the Distance Sensor and the back side of the Nissan emblem.
3. Snap the Distance Sensor Bracket (Figure 1) onto the Distance Sensor.
  - See **PARTS INFORMATION**.

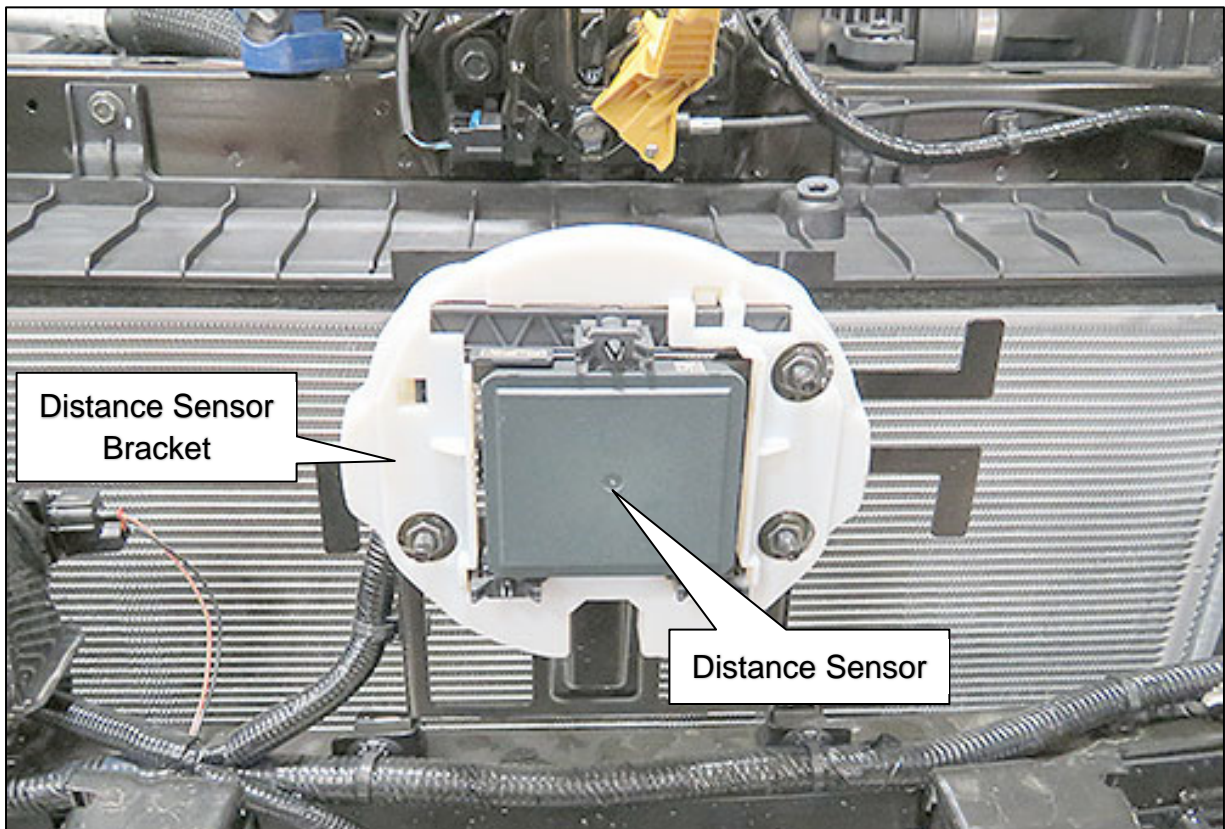


Figure 1

Refer to steps 4-7 to attach two (2) Foam Seals (Figure 2) to the inside of the Nissan emblem, on the Grille, to close the Grille spaces (Figure 3).

**HINT:** The Foam Seals are left and right, and are shown in Figure 2 on the sides and orientation that they will be installed.

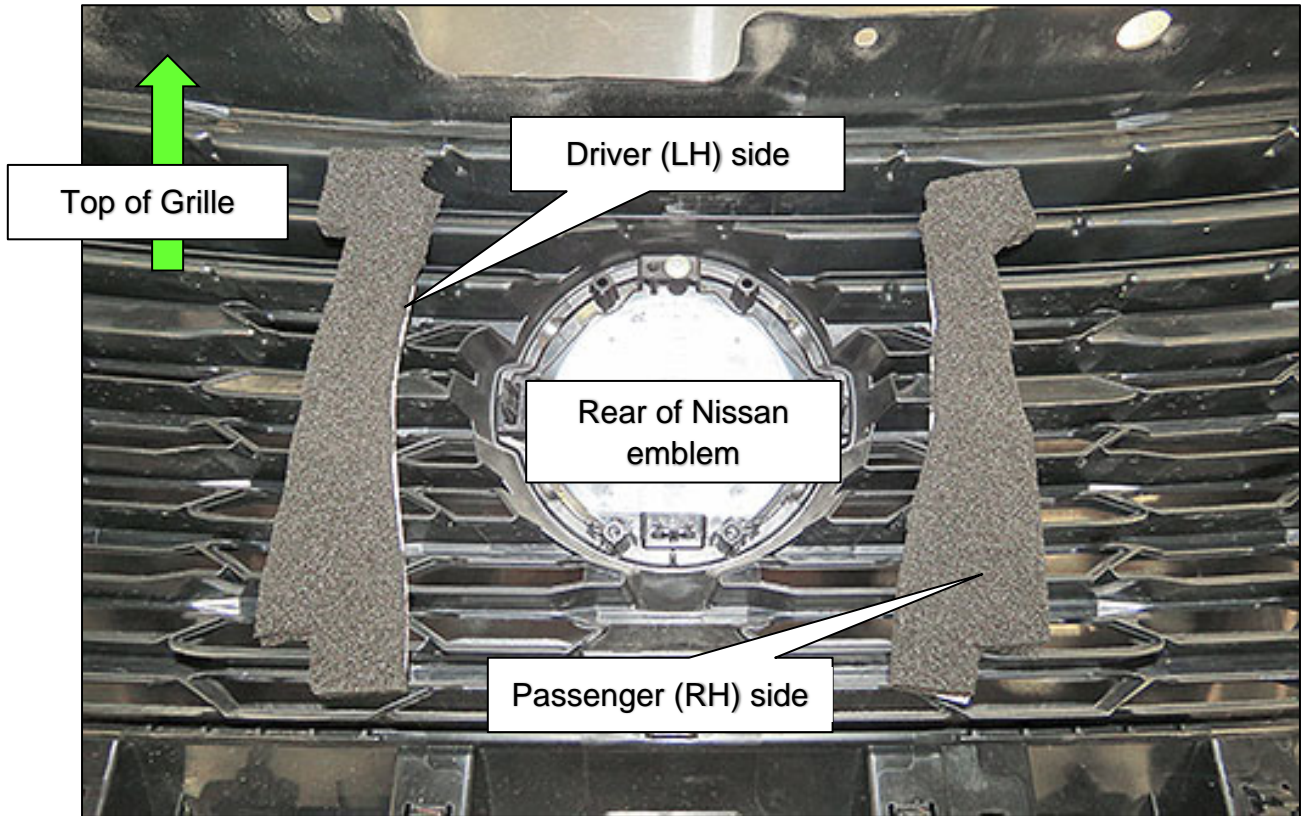


Figure 2

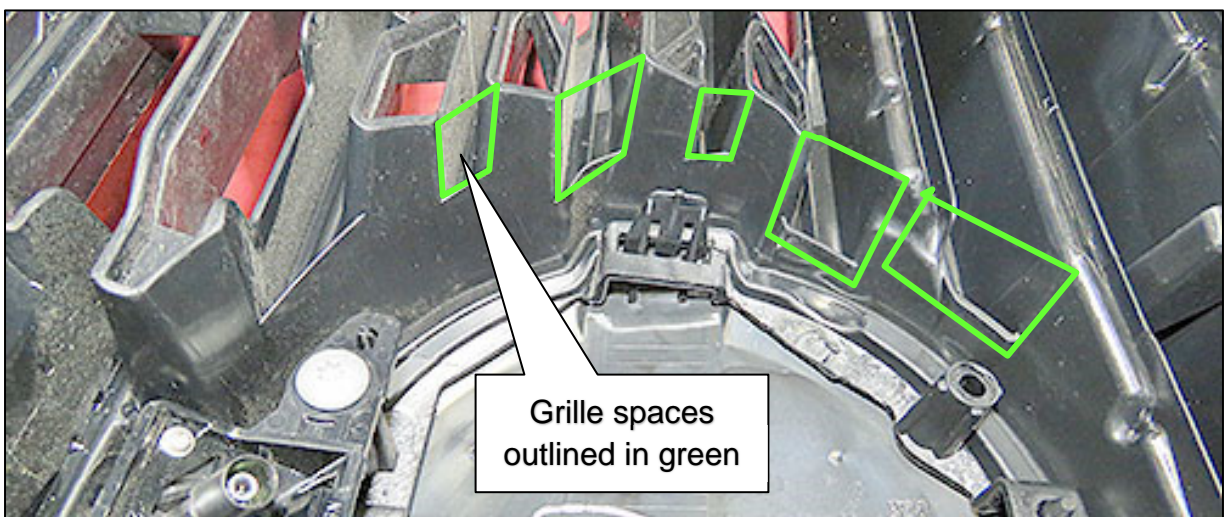


Figure 3

**HINT:** The left side is shown in the following Figures. The right side is similar.

4. Remove the self-adhesive backing from the left side Foam Seal.
  - Install the Foam Seals one at a time.

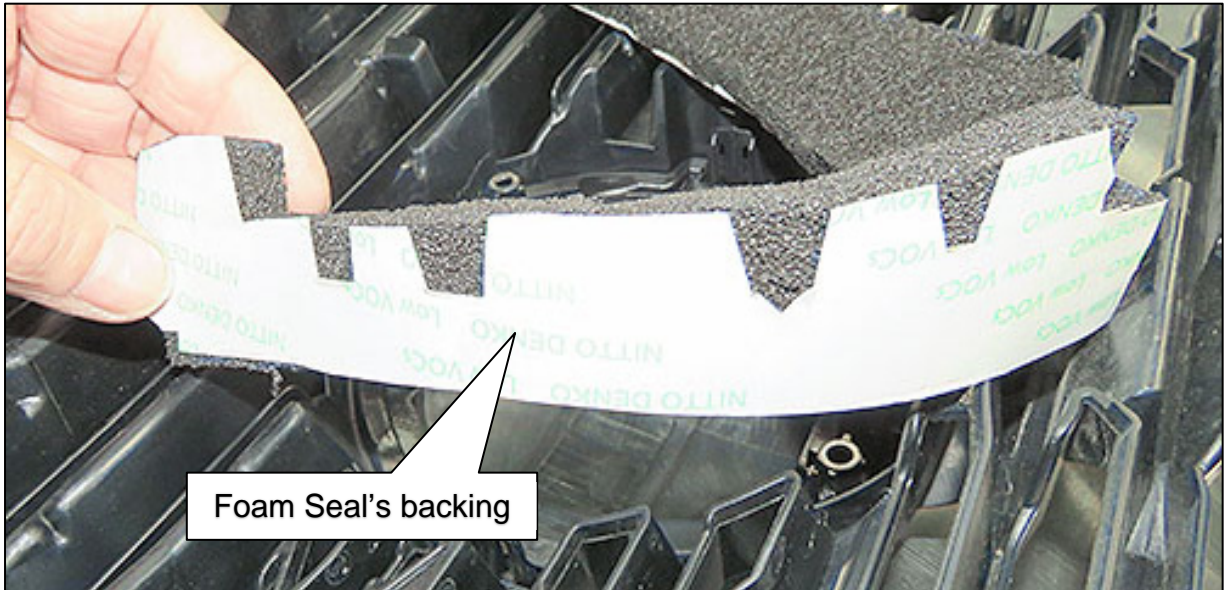


Figure 4

5. Start attaching the Foam Seal at the top of the Nissan emblem.

**IMPORTANT:** The top of both the left and right Foam Seals must be touching each other when installed.

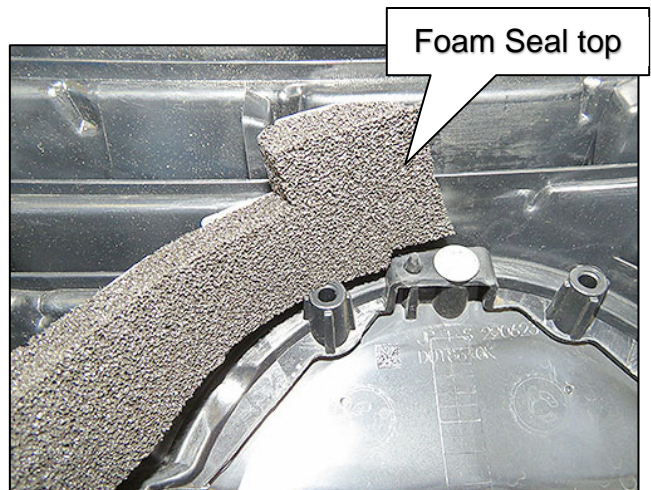


Figure 5

6. Continue attaching the foam as shown in Figure 6 and Figure 7 on page 5.

**HINT:** Use the self-adhesive cut-outs to help align the Foam Seal.

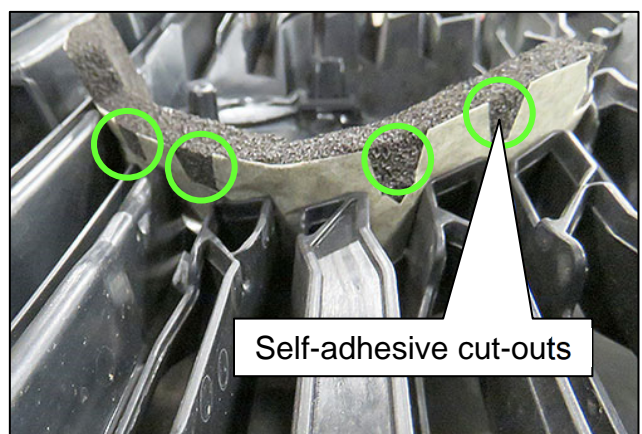


Figure 6

- Foam Seal notch should be level with the end of the last grille space.

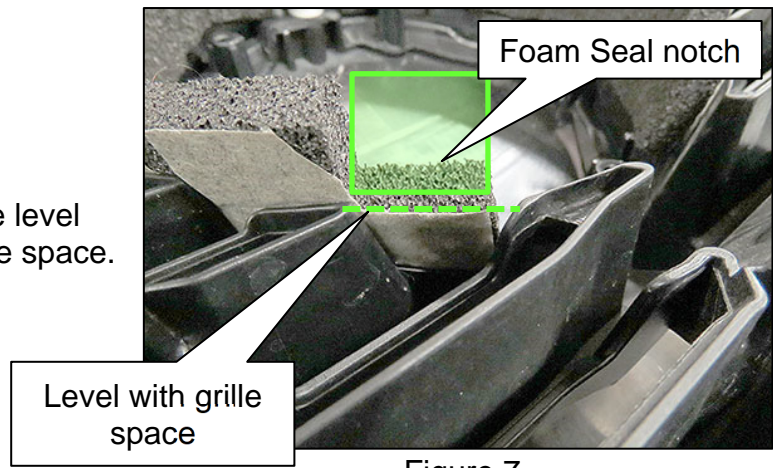


Figure 7

7. Refer to steps 4-6 on page 4 to install the right side Foam Seal.
  - Both Foam Seals must seal against each other at the top.**HINT:** Figure 8 shows both Foam Seals installed.

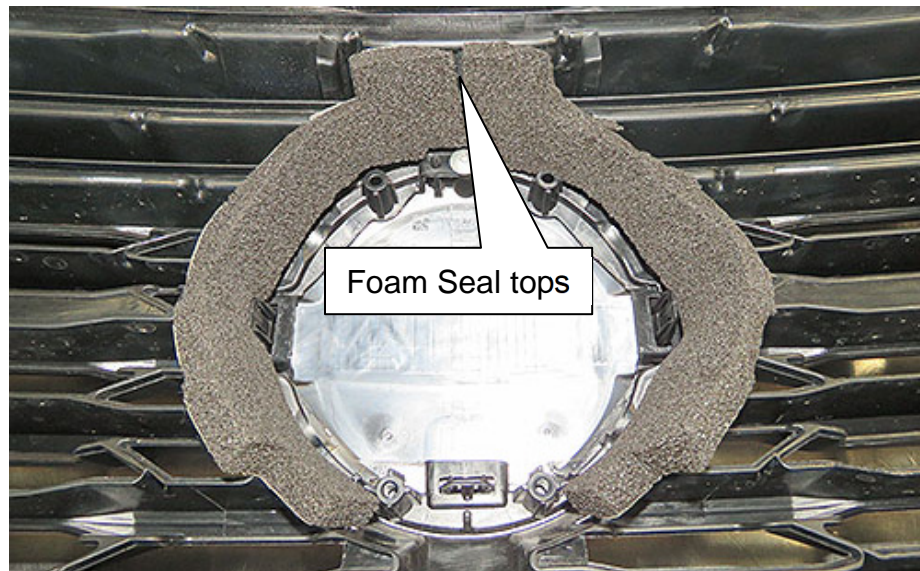


Figure 8

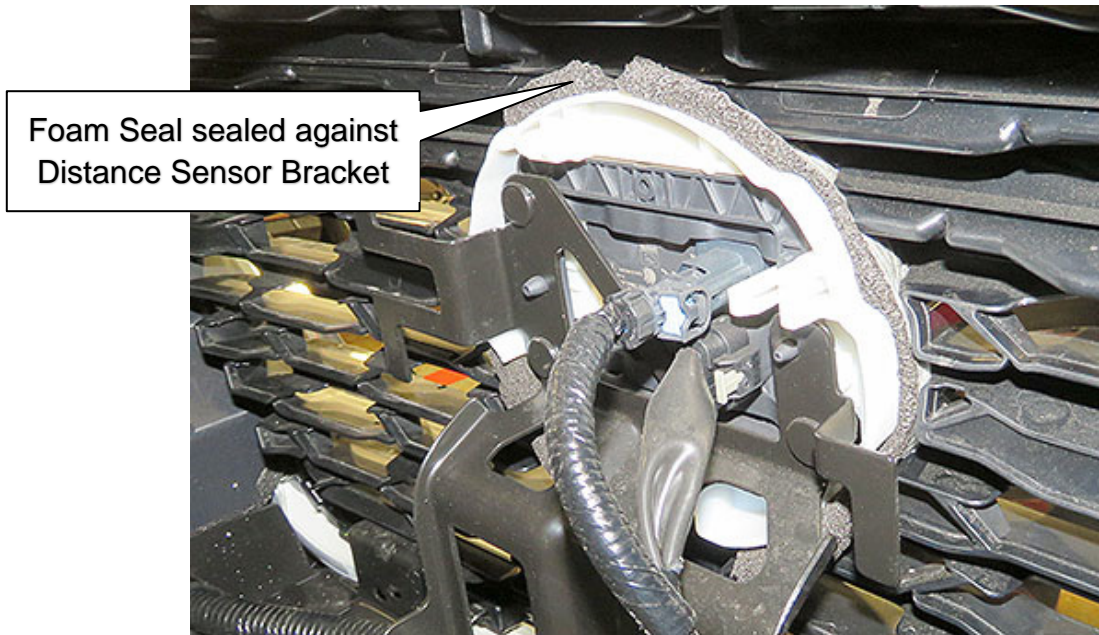
8. Fold the tops of the two Foam Seals over together, as shown in Figure 9.



Figure 9

9. Reinstall the Front Grille.

- Refer to the ESM: **BODY EXTERIOR, DOORS, ROOF & VEHICLE SECURITY > EXTERIOR > REMOVAL AND INSTALLATION > FRONT GRILLE > Removal and Installation**



Foam Seal sealed against  
Distance Sensor Bracket

Figure 10

10. With C-III plus, Perform **Erase All DTCs**.

11. Confirm that DTC C2582-97 no longer stores in the LASER/RADAR control unit.

- If DTC C2582-97 continues to store in the LASER/RADAR control unit, refer to the ESM for diagnostic information not supported by this bulletin.

## PARTS INFORMATION

DESCRIPTION	PART NUMBER	QUANTITY
BRKT-FR RADAR, MAIN (Distance Sensor Bracket)	285U2-6RF0A	1
BRKT-FR RADAR, TAPE, RH (Foam Seal)	285U2-6RF0C	1
BRKT-FR RADAR, TAPE, LH (Foam Seal)	285U2-6RF0D	1

## CLAIMS INFORMATION

Submit a Primary Part (PP) type line claim using the following claims coding:

DESCRIPTION	PFP	OP CODE	SYM	DIA	FRT
Install Bracket and Grille Tape Kit	(1)	BX8CAA	ZE	32	0.4

OR

DESCRIPTION	PFP	OP CODE	SYM	DIA	FRT
Install Bracket and Grille Tape Kit With AVM	(1)	BX8DAA	ZE	32	0.8

- (1) Reference the electronic parts catalog and use the Distance Sensor (28437-\*\*\*\*\*) as the Primary Failed Part (PFP).

## AMENDMENT HISTORY

PUBLISHED DATE	REFERENCE	DESCRIPTION
January 26, 2023	NTB23-011	Original bulletin published
April 19, 2023	NTB23-011A	Republished to include NNA