



# Service Bulletin

Bulletin No.: 23-NA-027

Date: April, 2023

## TECHNICAL

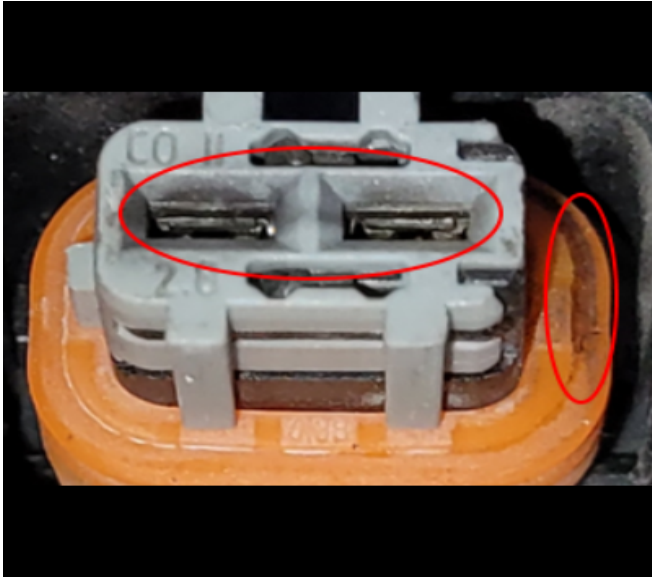
**Subject: Poor Engine Performance, Engine Misfires, Malfunction Indicator Lamp (MIL) Illuminated - DTC P0201, P0202, P0203, P0204, P0205, P0206, P0207, P0208, P0300, P0301, P0302, P0303, P0304, P0305, P0306, P0307, and/or P0308 Set**

Brand:	Model:	Model Year:		VIN:		Engine:	Transmission:
		from	to	from	to		
Chevrolet	Silverado 2500HD/3500HD	2017	2023	-	-	L5P	-
	Silverado 4500HD, 5500HD and 6500HD	2019				L5D	
GMC	Sierra 2500HD/3500HD	2017				L5P	

<b>Involved Region or Country</b>	North America, Middle East, Iraq, Israel, Palestine, Australia/New Zealand
<b>Condition</b>	<p>Some customers may comment on one or more of the following:</p> <ul style="list-style-type: none"> <li>• Poor engine performance</li> <li>• Engine misfires</li> </ul> <p>Some technicians may find one or more of the following codes set in the Engine Control Nodule (ECM):</p> <ul style="list-style-type: none"> <li>• P0201</li> <li>• P0202</li> <li>• P0203</li> <li>• P0204</li> <li>• P0205</li> <li>• P0206</li> <li>• P0207</li> <li>• P0208</li> <li>• P0300</li> <li>• P0301</li> <li>• P0302</li> <li>• P0303</li> <li>• P0304</li> <li>• P0305</li> <li>• P0306</li> <li>• P0307</li> <li>• P0308</li> </ul>
<b>Cause</b>	This condition may be caused by the engine vibration creating wear between the injector connector terminal and the high pressure diesel fuel injector.
<b>Correction</b>	Whenever a high pressure diesel fuel injector is diagnosed as needing to be replaced, follow the Service Procedure below to verify if the electrical connector is the cause.

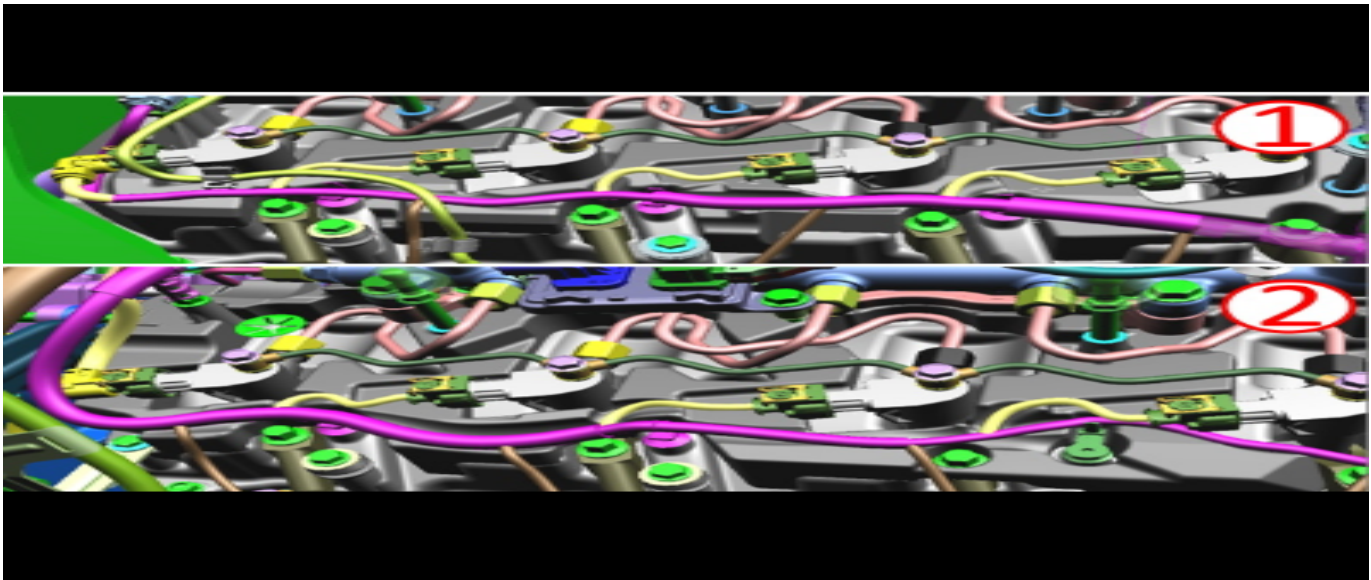
**Important:** Service agents must comply with all International, Federal, State, Provincial, and/or Local laws applicable to the activities it performs under this bulletin, including but not limited to handling, deploying, preparing, classifying, packaging, marking, labeling, and shipping dangerous goods. In the event of a conflict between the procedures set forth in this bulletin and the laws that apply to your dealership, you must follow those applicable laws.

## Service Procedure



6279590

1. Using Diagnostic Test Probe J-35616-35 (VT), test all the electrical connectors. Refer to *Probing Electrical Connectors in SI*.
  - ⇒ While testing these connectors, examine the connector for indications of fretting or black powder on the connector or connector seal as shown in the graphic above.
2. If any connectors fail the probe test or the visual inspection, replace that connector. Refer to *Wire to Wire Repair in SI*.



6279591

3. When replacing the connector:
  - Odd Bank (1)
  - Even Bank (2)

⇒ Verify that the wires will be able to be routed as shown in the graphic above.

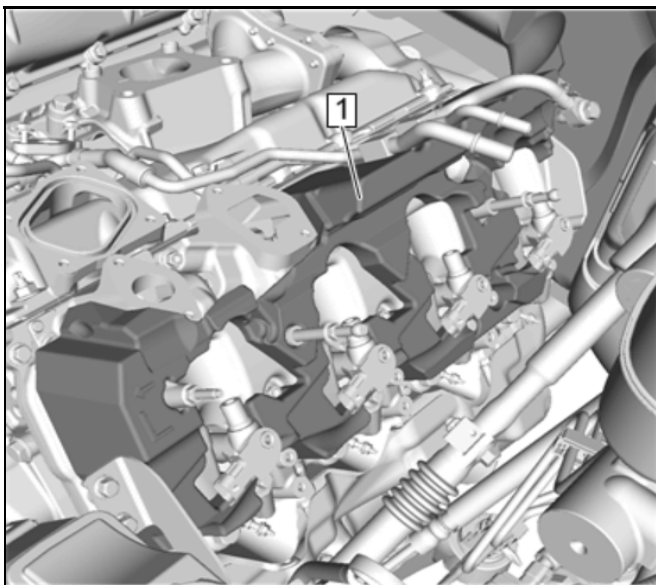
⇒ Verify that the wires are not being stressed where the connection is made.
4. Prior to installing the electrical connectors to the injectors, apply di-electric grease to each connector.

### Parts Information

The Dupont MOLYKOTE 4 Electrical Insulating Compound listed below can be sourced locally from the Dow Chemicals/Dupont distributor in your area.

Causal Part	Description	Part Number	Qty
X	CONNECTOR KIT, ENG WRG HARN	19368140	As Required
N/A	AC Delco Dielectric Lubricant*	12345579 (U.S.)	1
N/A	Dupont MOLYKOTE 4 Electrical Insulating Compound* (Or Equivalent)	In Canada — Obtain Locally	1

\*There is enough material to do additional vehicles. Store the remaining material for future use.



4599048

**Note:** Examine the underside of the deadener (1) for evidence of wire contact.

5. Prior to installing the deadener, verify that the wire routing doesn't come into contact with said deadener.

## Warranty Information

**Important:** Only use the Labor Operation number that coincides with the repair performed.

For vehicles repaired under the Bumper-to-Bumper coverage (Canada Base Warranty coverage), use the following labor operation. Reference the Applicable Warranties section of Investigate Vehicle History (IVH) for coverage information.

**Note:** Emission Warranty Coverage Code E applies to Labor Operation 4088918.

Labor Operation	Description	Labor Time
4088918*	Diagnosis and Testing for Fuel Injector Electrical Connectors	0.5 hr
Add	L5P Injector Electrical Connector Repair (#3) Right Side	2.6 hr**
Add	L5P Injector Electrical Connector Repair (#1, 5, 7) Right Side	1.7 hr**
Add	L5P Injector Electrical Connector Repair Left Side	1.7 hr**
Add	L5P Each Electrical Connector Replacement	0.4 hr
Add	L5D Injector Electrical Connector Repair Bank 1	2.0 hr**
Add	L5D Injector Electrical Connector Repair Bank 2	1.7 hr**
Add	L5D Each Electrical Connector Replacement	0.4 hr

\*This is a unique Labor Operation for Bulletin use only.  
 \*\* For add times, refer to appropriate injector replacement time.

<b>Version</b>	3
<b>Modified</b>	Released March 16, 2023 Revised March 31, 2023 - Changed Emissions Coverage to Powertrain Coverage under Warranty Information section. Revised April 20, 2023 - Changed Powertrain Coverage to Bumper to Bumper Coverage under Warranty Information section.

