

Technical product information

Topic	EPB Warning light in DIP - Front door/s power latch system intermittent - DTC U112300 within Address 03 and Address 46
Market area	Bentley: worldwide (2WBE)
Brand	Bentley
Transaction No.	2055883/3
Level	EH
Status	Approval
Release date	

Event memory entries

Diagnostic address	Event memory entry	Fault type	Fault status
0003 - Brake Electronics	U112300: Databus error value received		Intermittent
0003 - Brake Electronics	U112300: Databus error value received		static
0046 - Comfort System Central Control Module	U112300: Databus error value received		Intermittent
0046 - Comfort System Central Control Module	U112300: Databus error value received		static

New customer code

Object of complaint	Complaint type	Position
driver assist systems, convenience features -> parking aid, park assist system, rear traffic alert -> overhead view camera picture	functionality -> faulty display	
driver assist systems, convenience features -> parking aid, park assist system, rear traffic alert -> reversing camera picture	functionality -> faulty	
driver assist systems, convenience features -> parking aid, park assist system, rear traffic alert -> reversing camera picture	functionality -> too late	
driver assist systems, convenience features -> parking aid, park assist system, rear traffic alert -> reversing camera picture	functionality -> too slow	
driver assist systems, convenience features -> parking aid, park assist system, rear traffic alert -> reversing camera picture	functionality -> faulty display	
information, navigation, communication, entertainment -> TV mode -> display TV image	functionality -> faulty	
information, navigation, communication, entertainment -> TV mode -> display TV image	functionality -> without function / defect	
information, navigation, communication, entertainment -> TV mode -> TV channel tracking	functionality -> without function / defect	
information, navigation, communication, entertainment -> TV mode -> TV reception -> digital TV reception	functionality -> faulty	
information, navigation, communication, entertainment -> TV mode -> TV reception -> digital TV reception	functionality -> without function / defect	
information, navigation, communication, entertainment -> TV mode -> automatic TV channel seek	functionality -> without function / defect	
information, navigation, communication, entertainment -> navigation mode -> route navigation	functionality -> faulty display	
information, navigation, communication, entertainment -> navigation mode -> manage destination memory -> destination in destination memory	functionality -> deletes itself independently	
information, navigation, communication, entertainment -> radio, navigation, MMI, hard drive device functions -> monitor display	functionality -> faulty	front
information, navigation, communication, entertainment -> radio, navigation, MMI, hard drive device functions -> monitor display	functionality -> faulty display	front
information, navigation, communication, entertainment -> radio, navigation, MMI, hard drive device functions -> switch device/MMI on/off -> start screen	functionality -> without function / defect	

Vehicle data

Bentayga

Sales types

Type	MY	Brand	Designation	Engine code	Gearbox code	Final drive code
4V1*	2017	E		*	*	*
4V1*	2018	E		*	*	*
4V1*	2019	E		*	*	*
4V1*	2020	E		*	*	*

4V1*	2021	E		*	*	*
4V1*	2022	E		*	*	*
4V1*	2023	E		*	*	*

Documents

Document name
master.xml



EPB Warning light in DIP - Front door/s power latch system intermittent - DTC U112300 within Address 03 and Address 46

Customer statement / workshop findings

Electronic Parking Brake warning evident within the DIP

The front door/s power latching system sporadically does not work. The door remains in the first latch of the door lock and is not closed by the power latching system

DTC U112300: Databus error value received Symptom 450560 evident within the ESP control unit (electronic stabilisation program) (J104)

And/or

DTC U112300 symptom code 65759 evident within the Onboard supply control unit 2 (J393)

Technical background

The micro switch signal of the door lock is not recognised or too briefly

A counter-pressure of the door is required to clearly recognise the signal

Check whether there are other TPIs for the complaint, for example the software of the door control units are up to date

NOTE: Only adjust the required front door striker, you must only adjust both strikers if both sides are affected by the issue

Production change

Not applicable

Measure

- 1) Check whether the striker runs into the centre of the rotary latch of the door lock and correct it if necessary - Refer to Rep.Gr 57 - Door striker
- To remove and fit

In addition, adjust the striker as far as possible (at least 0.5 mm) further inwards (Figure 1)



Figure 1

If required adjust the door to the inside so that the front door is flush with the rear door - Refer to Rep.Gr 57. A small gap from front to rear door is possible and will not normally cause wind noises (Figure 2)

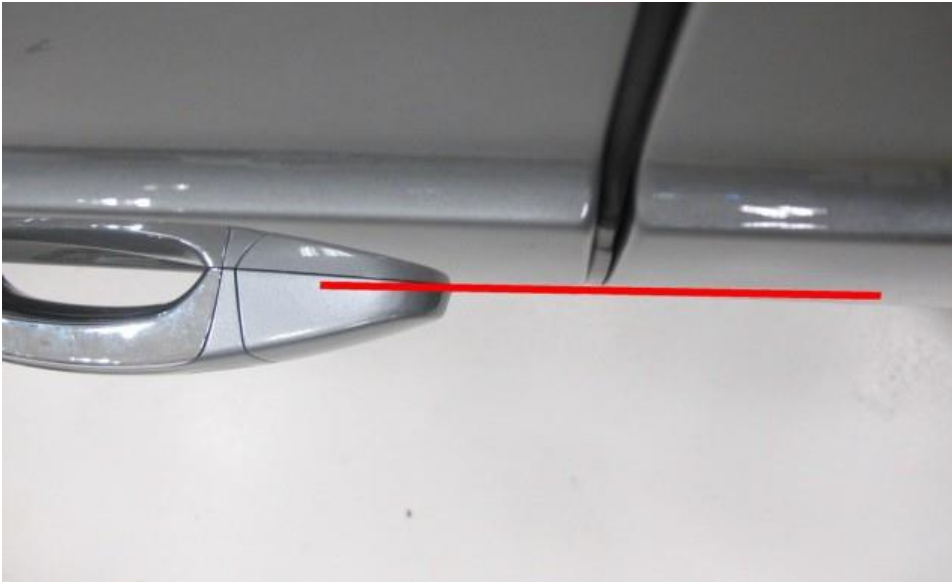


Figure 2

Check the function of the power latching system.

IMPORTANT: If it works correctly, the work can be completed at this point

2) In individual cases it may be necessary to replace the outer door seal of the affected door

Refer to Rep.Gr 57

Then glue the new seal in the area of the door lock about 1 mm further inwards (Figure 3)

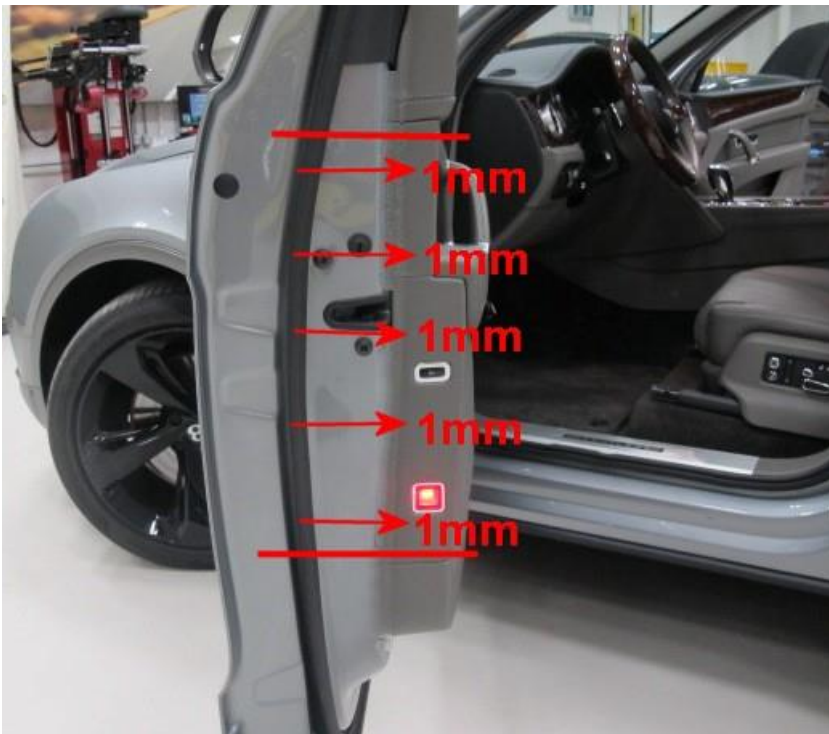


Figure 3

The power latching system should permanently work correctly.

Warranty accounting instructions

Time to conduct procedure 1 - Time to adjust the front door striker (one door)

Warranty Type 110 or 910
Labour Operation Code 57 25 15 00
Damage Service Number 57 25
Damage Code 00 11
Time 20 Time units

Time to adjust door striker (Both front doors)

Warranty Type 110 or 910
Labour Operation Code 57 25 16 00
Damage Service Number 57 25
Damage Code 00 11
Time 30 Time units

Time to conduct procedure 2 - Replace x1 outer front door seal

Warranty Type 110 or 910
Labour Operation Code 57 65 19 00
Damage Service Number 57 65
Damage Code 00 10
Time 90 Time units

Parts information

If required: Outer door seal (self-adhesive) according to the ETKA parts catalogue