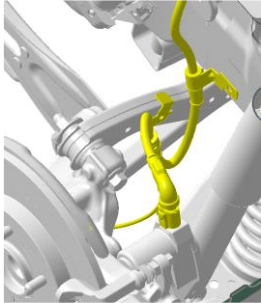
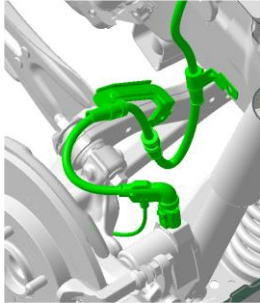
 HYUNDAI Technical Service Bulletin	GROUP BRAKE	NUMBER 23-BR-001H
	DATE APRIL 2023	MODEL(S) IONIQ HYBRID (AE HEV) IONIQ PLUG-IN (AE PHEV)
SUBJECT: ELECTRIC PARKING BRAKE (EPB) DTC C2416 OR C2417 DIAGNOSIS		

Description: When servicing any of the specified vehicles below with the corresponding DTCs, C2416, “Motor Short or Open – LH (EPB)” or C2417 “Motor Short or Open – RH (EPB)”, follow the step-by-step procedures in this bulletin.

PREVIOUS 59795/96-G2000 and 59795/96-G2100	NEW 59795/96-G2010 and 59795/96-G2110
 <p>Showing Left Side</p>	 <p>Showing Left Side</p>

STUI



This TSB includes STUI pictures as a requirement. Where indicated, please include the last 6 digits of the VIN and date of repair on a piece of paper. Ensure the VIN and date of repair are clearly visible. Finally, please ensure all captured pictures are completed according to the steps in this TSB and uploaded to STUI. **All claims submitted that have illegible, incomplete, missing, or incorrect picture(s) are subject to debit.**

APPLICABLE VEHICLES: All 2019-2022MY Ioniq Hybrid (AE HEV) and Plug-in Hybrid (AE PHEV) vehicles equipped with an Electronic Parking Brake (EPB)

Part Information:

MODEL	MODEL YEARS	PART NAME	PREVIOUS PART	NEW PART
IONIQ HYBRID (AE HEV) equipped with EPB	2019 to 2020	WIRING-E.P.B. CONN EXTN, LH	59795-G2000	59795-G2010
	Produced from 10/17/2018 to 01/24/2020	WIRING-E.P.B. CONN EXTN, RH	59796-G2000	59796-G2010
	2020 to 2022	WIRING-E.P.B. CONN EXTN, LH	59795-G2100	59795-G2110
	Produced 01/25/2020 and after	WIRING-E.P.B. CONN EXTN, RH	59796-G2100	59796-G2110
IONIQ PLUG-IN (AE PHEV) equipped with EPB	2019 to 2022	WIRING-E.P.B. CONN EXTN, LH	59795-G2000	59795-G2010
	Produced 10/17/2018 and after	WIRING-E.P.B. CONN EXTN, RH	59796-G2000	59796-G2010

i Information

- Both the previous and new parts can be installed at the same time (PREVIOUS on one side and NEW on the other).

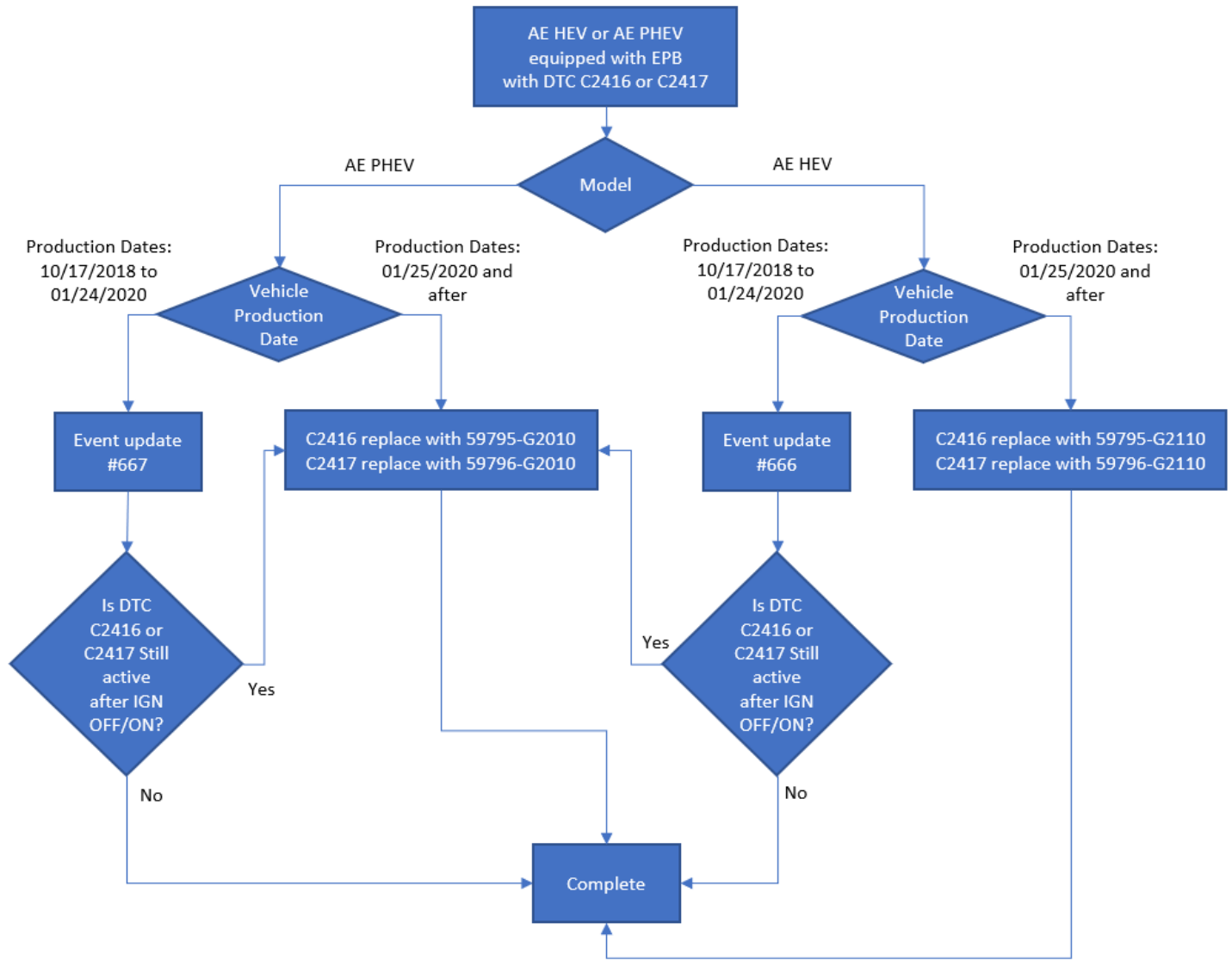
Warranty Information:

MODEL	OP CODE	OPERATION	OP TIME	CAUSAL PART	NATURE CODE	CAUSE CODE
IONIQ HYBRID (AE HEV)/PLUG-IN (AE PHEV)	59797R00	E.P.B. EXTENSION WIRING (LH)	0.8 M/H	59795*	I3T	ZZ3
	59797R0R	E.P.B. EXTENSION WIRING (RH)	0.8 M/H	59796*		
	59797R0B	E.P.B. EXTENSION WIRING (BOTH)	1.1 M/H	59795* 59796*		

NOTE 1: Normal Warranty Applies

NOTE 2: Refer to the above Parts Information table to select the applicable Causal Part number.

FLOW CHART:




i Information

- The DTCs stored within the vehicle may show more than the base 5-digit code. Please use the first 5-digits to determine the appropriate repair.
- Either Active or History DTC.

Service Procedure:

1. Follow the above Flow Chart for repairs.
2. If Event Update #666 or #667 is necessary, refer to TSB# 21-BR-004H or latest version, EPB ECU UPDATE FOR DTC C2416 OR C2417.

 HYUNDAI Technical Service Bulletin	GROUP CHASSIS	NUMBER 21-BR-004H
	DATE APRIL 2021	MODEL(S) IONIQ HEV (AE HEV) and PHEV (AE PHEV)
SUBJECT: EPB ECU UPDATE FOR DTC C2416 OR C2417		
Description: This bulletin describes the procedure to update the EPB (Electronic Parking Brake) ECU to revise the logic of setting DTC C2416, "Motor Short or Open – LH (EPB)" or C2417 "Motor Short or Open – RH (EPB)" from vibrations while driving on certain roads.		
Applicable Vehicles: <ul style="list-style-type: none"> • Certain 2019 and 2020MY IONIQ HEV (AE HEV) and PHEV (AE PHEV) vehicles equipped with an EPB, produced from October 17, 2018 to January 24, 2020. 		

3. If EPB extension harness replacement is necessary, continue with the following procedures.

Only replace the side(s) as directed by the DTC.

4. Disconnect the Auxiliary 12V Battery according to the applicable shop manual.

Engine Electrical System → Charging System → Auxiliary 12V Battery

⚠ CAUTION

Risk of injury may occur due to electric shock if the auxiliary 12V battery is not disconnected before harness replacement.

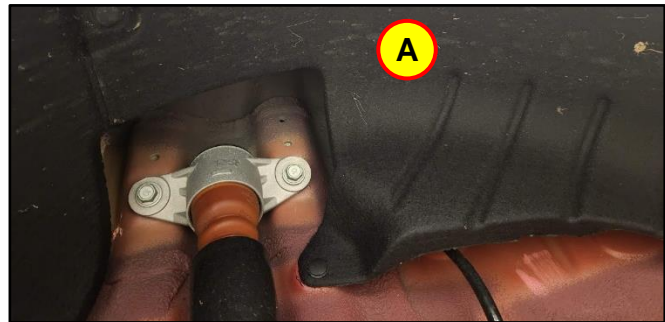
5. Lift the vehicle on a hoist and remove the wheel

Wheel Lug Nut Torque

lb-ft	• 79.6-94.0
kgf.m	• 11.0-13
N.m	• 107.9-127.5



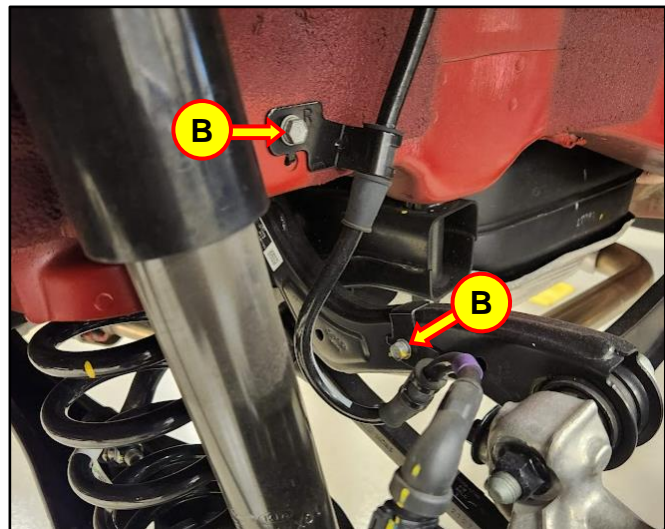
6. Remove the inner fender liner (A).



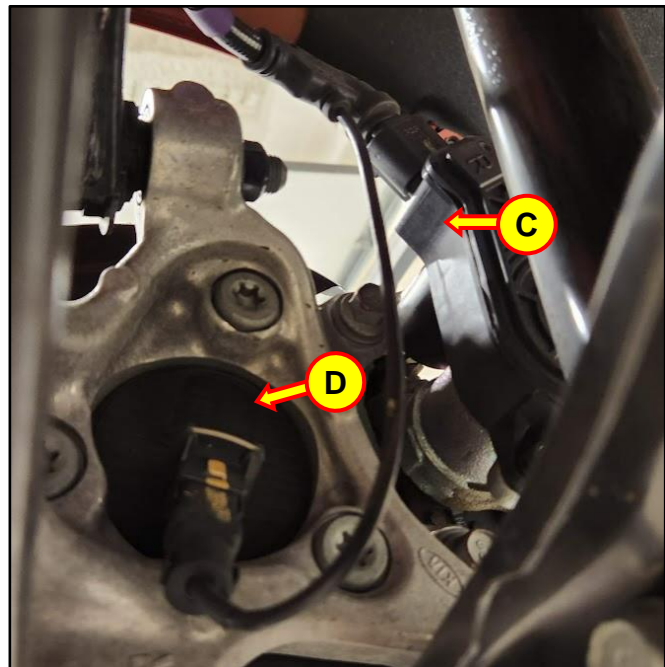
7. Remove the bolts (B) holding the harness brackets.

Harness Bracket Bolts Tightening Torque

lb-ft	• 2.9-4.3
kgf.m	• 0.4-0.6
N.m	• 3.9-5.9

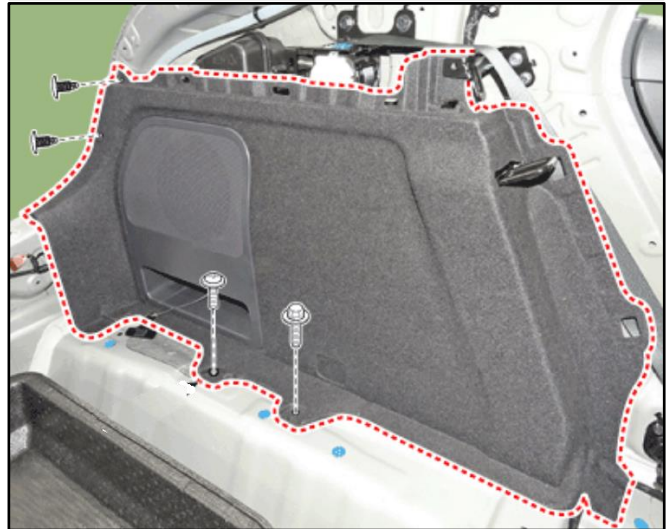


8. Disconnect the harness from the EPB actuator (C) and wheel speed sensor (D).

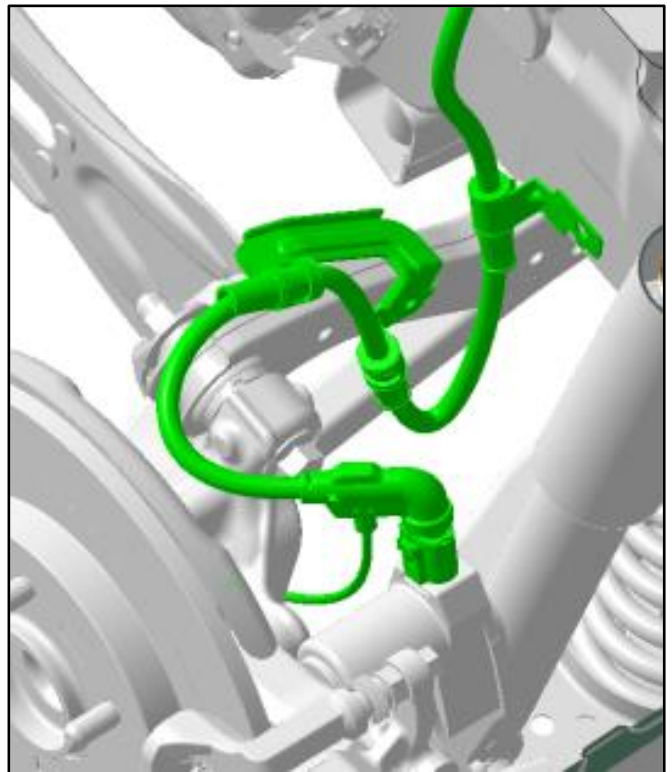


9. To access the connector in the vehicle, remove rear luggage side trim according to the shop manual.

Body (Interior and Exterior) → Interior Trim
→ Luggage Side Trim



10. Install the new harness.
Ensure the harness is routed correctly.

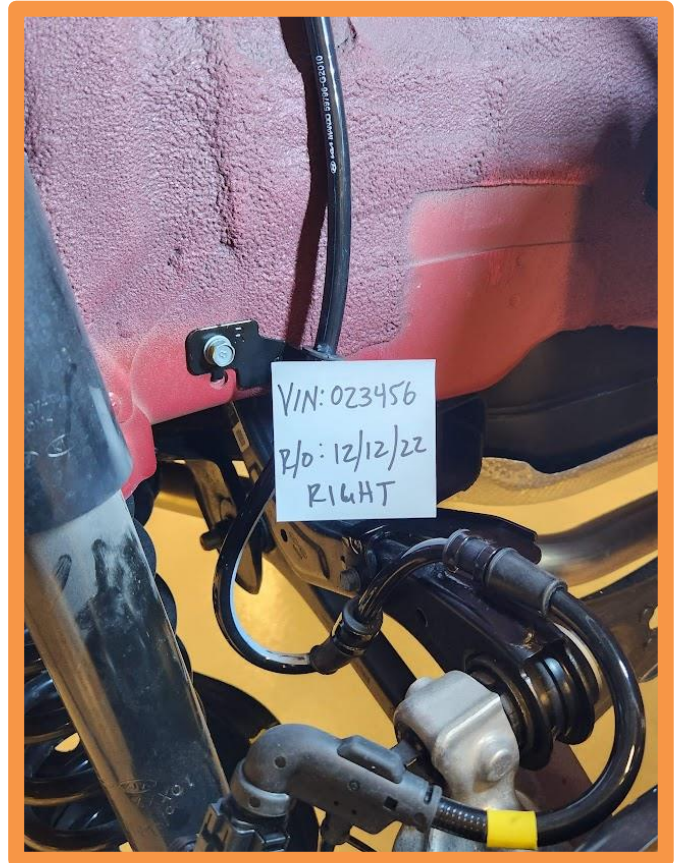


11. After the EPB extension harness replacement, use STUI to take a photo of the newly installed harness.

STUI

Using STUI, photograph the newly installed EPB extension harness, along with the last 6 digits of the VIN, the date of the repair on a piece of paper, and the side of replacement, "Left" or "Right"

Upload the photo to STUI. If both sides require replacement, the left and right photos must be uploaded to STUI.



Example Photo

12. Reinstall parts in reverse order of removal.
13. The service procedure is complete.