



Volvo On-Highway Vehicles - Bendix ABS Fault SPN 807 FMI 13 Blink code 19-4

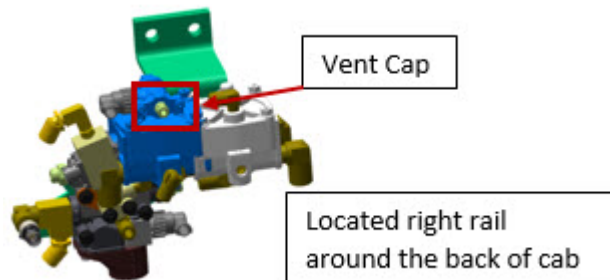


The new Central Pressure Control (CPC) system has changed the way that the ABS chuff test is performed. On initial key on the ABS goes through a pneumatic chuff test where it activates the ABS modulators. The second portion of the test activates once the driver applies the service brake. The system then performs a pneumatic and electrical test that monitors system response while activating modulators such as Trailer Pressure Modulator Valve (TPMV). This test is to verify electrical components along with the pneumatic system pressures and exhaust are working correctly.

There have been a few trucks that have not passed the chuff test due to hose configuration and the software monitors not allowing for system or driver variables. This ABS software and hardware change will address both.

Volvo Trucks without Hill Start Assist (HSA)

Relocate the vent by removing the mushroom vent from ATR6 valve control port and run 3/8 line from the valve to any open port in the pass through air manifold mounted on the bulkhead.



Live UI

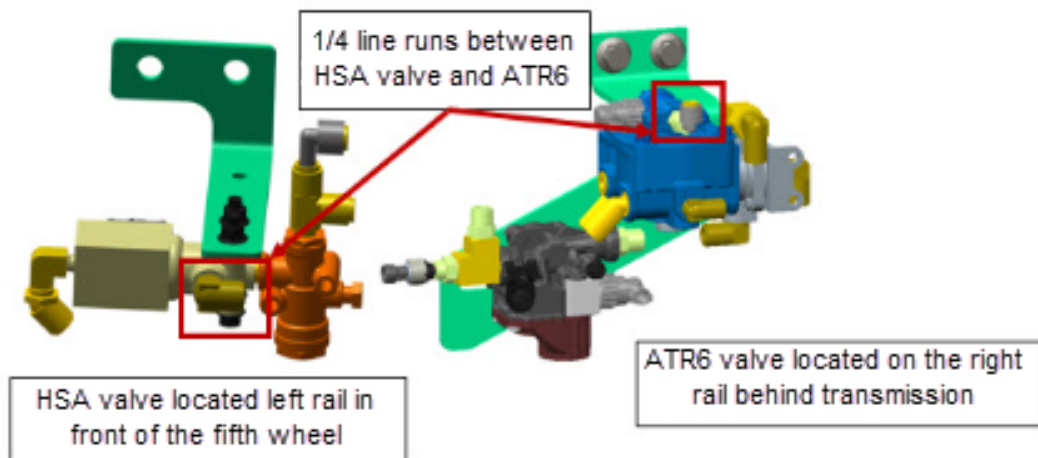
Air Line Fitting Part Number Reference	
Fitting Size	P/N

1/4 -18 NTF X 3/8

8397700

Volvo Trucks with Hill Start Assist (HSA)

Remove 1/4" airline that runs from ATR6 control port to Hill-start assist valve. See Figures 3 and 4.
Replace 1/4" line with 3/8".



Air Line Fitting Part Number Reference

Fitting Size	P/N
1/8 - 27 NTF X 3/8	8397698
1/4 -18 NTF X 3/8	8397700

Program ABS controller

Configuration operation found in Tech Tool. The operation will download a configuration file for the connected vehicle and initiate configuration of the ESP feature via the Bendix® Vendor Configuration Program (VCP).

Live UI fic Bendix® VCP package for Tech Tool must be installed on the PC prior to performing an ESP configuration. This software is not installed as part of Tech Tool and therefore must be

downloaded and installed separately.

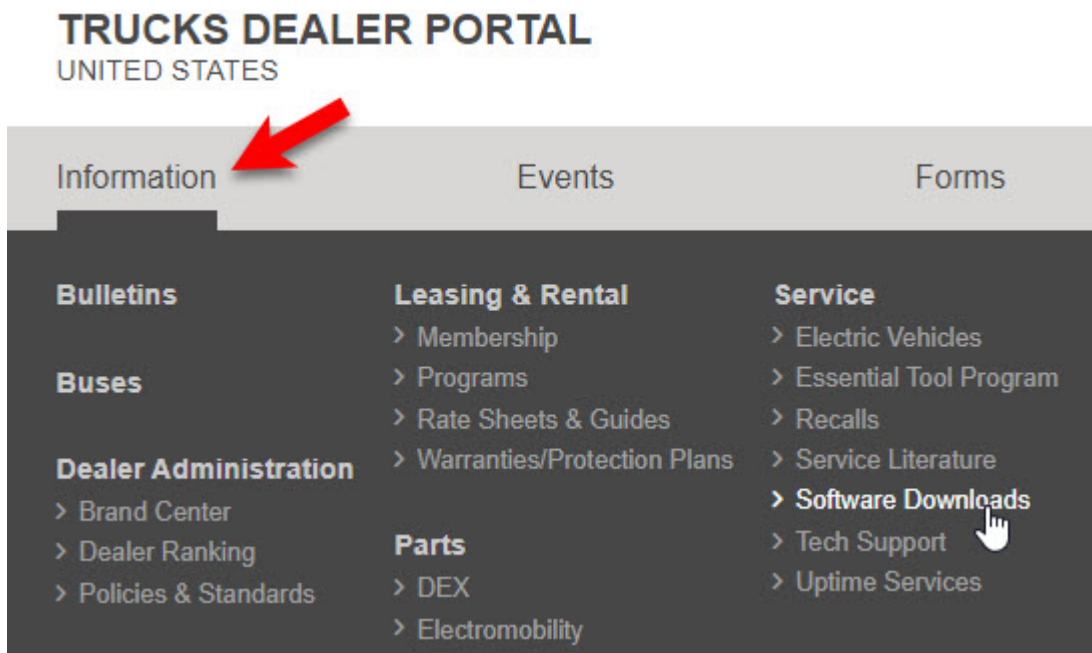
The Bendix® VCP installation can be found on the Trucks Dealer Portal website.

- This installation file may be updated at any time and should be downloaded only from the **Trucks Dealer Portal** website.

Download Instructions:

1. Login to Trucks Dealer Portal (TDP)

2. In the Information tab, select **Software Downloads** from the Service section.



3. Select Bendix VCP link to download the latest installation

 Live UI

Software Downloads

Downloads & Links:

[TeamViewer - Remote Connection](#) - allow your retail support agent to connect to your desktop in order to assist you

[RollTek Seat Service Software](#)

[Sun Java Runtime Environment](#) - used for Java applications

PTT Downloads:

[Premium Tech Tool Website](#)

[Bendix VCP \(v.3.0.43\) - December 20, 2022](#)

(VCP Installation Instructions are included in the zipped file that you will download.)



4. Save the .zip file in a location on the PC that is easy to find - for example, "C:\Temp" or the Desktop.

Software Installation

CAUTION

If the **Bendix® Vendor Configuration Program** or **ABS6 Vendor Configuration Program** is already installed on PC - it must be removed prior to installing a new version.

Removal Instructions:

1. Go to the 'Control Panel' in Windows – double click on 'Add or Remove Programs'.
2. In the list of currently-installed programs find **Bendix® ABS6 Vendor Configuration Program** or **Bendix® vendor configuration Program** - right click and select 'Remove/Uninstall'.

Live UI w the prompts through the uninstall process.- Once the old version has been removed – the new version can be installed.

Bendix (VCP) Installation:

1. Go to the location where the .zip was saved
2. Open the zip file and double - click the **Bendix Software.exe** file.
 - **Note:** It may be necessary to extract the file to a temporary location before running the .exe file.
3. Right lick on the .zip file and "extract" it to a temporary location.
4. Go to the temp location, find the Bendix Vendor Configuration Program VM.exe file and double- click it.
5. Follow the installation instructions used in the default settings. (Additional components used by **Bendix® VCP** will be installed if they are not on the PC)
 - **Note:** A message will be shown if an additional required component is not installed on the PC.
[see figure 2]

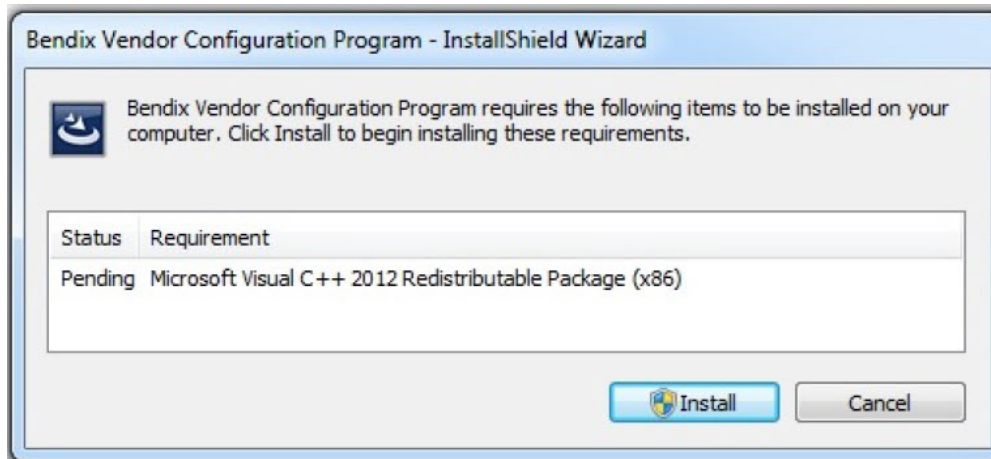


Figure 2

6. Click 'Install' to **install** the component; selecting '**Cancel**' will abort the installation.

7. When the component installation finishes, the installation will continue. Click **'Next'** to proceed. [see figure 3]

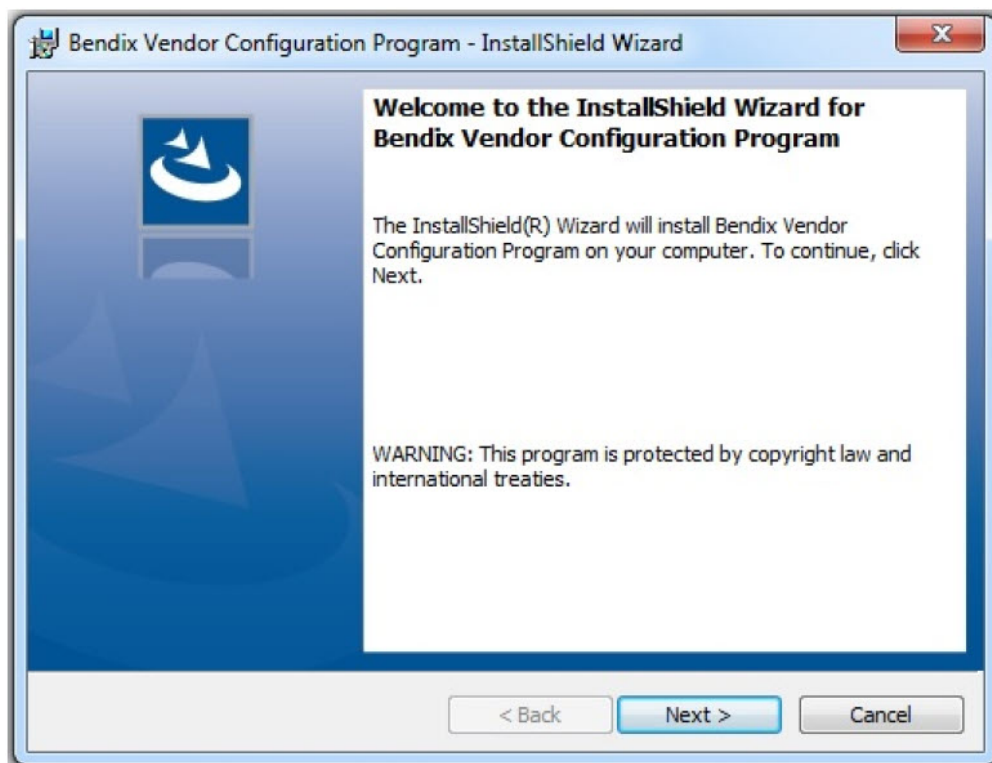


Figure 3

Network Connection at the Vehicle

In order to perform the ESP Control Unit Configuration operation, it must be possible to connect to the vehicle and the Central Systems at the same time. Therefore, it must be possible for the PC to have a network (LAN or Wi-Fi) connection while also connected to the vehicle's diagnostic connector.

Performing ESP Control Unit Configuration

☐ Live UI Performing the actions outlined in the Preparation section above, connect the PC to the vehicle's diagnostic connector and complete the vehicle identification process displayed in Tech Tool's

'PRODUCT' tab.

- Make sure that the PC is able to connect to Central Systems via a network/internet connection.

Select the "Calibrate" tab and expand group '5 – Brakes' and open the 'ESP Control Unit Configuration' operation. [see figure 4]

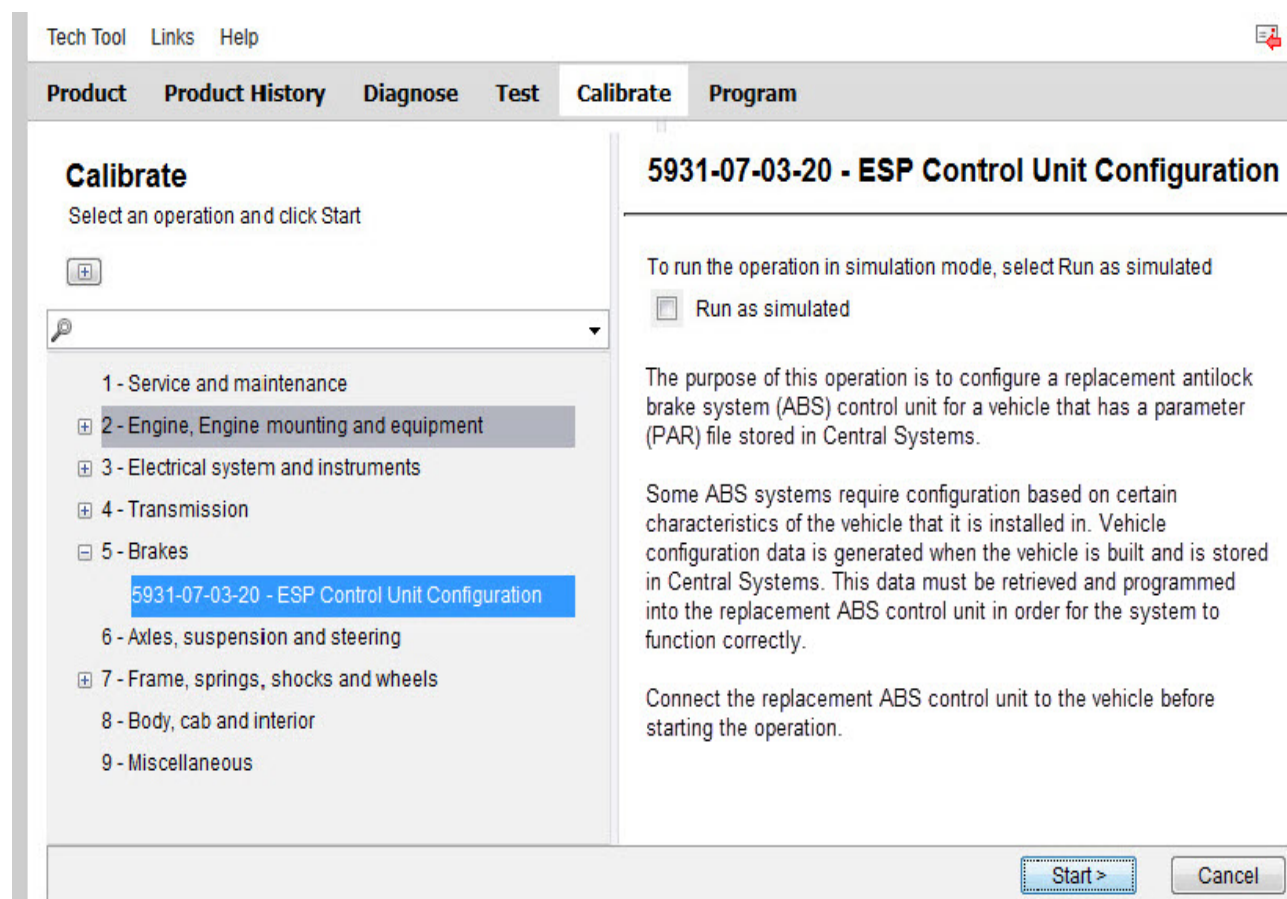


Figure 4

The ESP Control Unit Configuration operation is structured as a checklist of actions, similar to control unit software programming operations. [see figure 5]



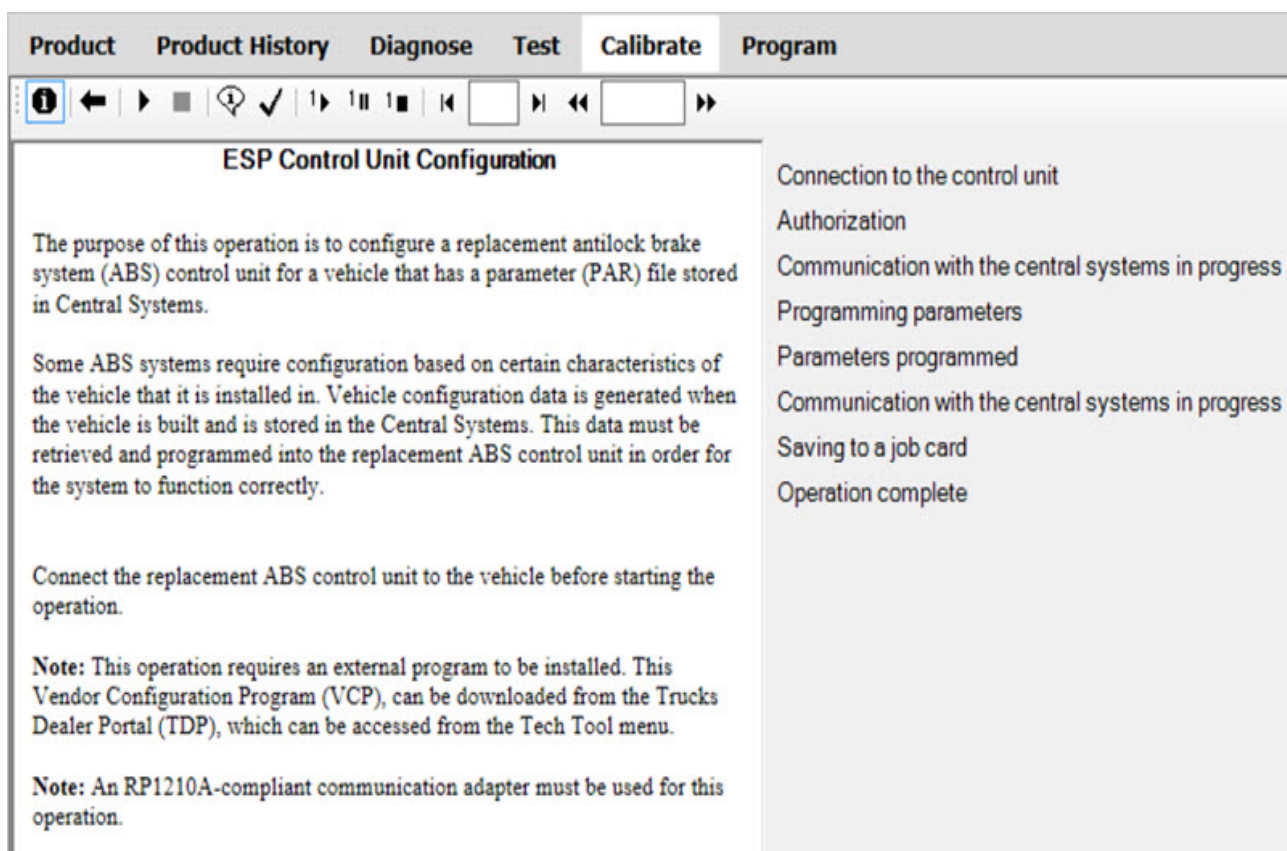
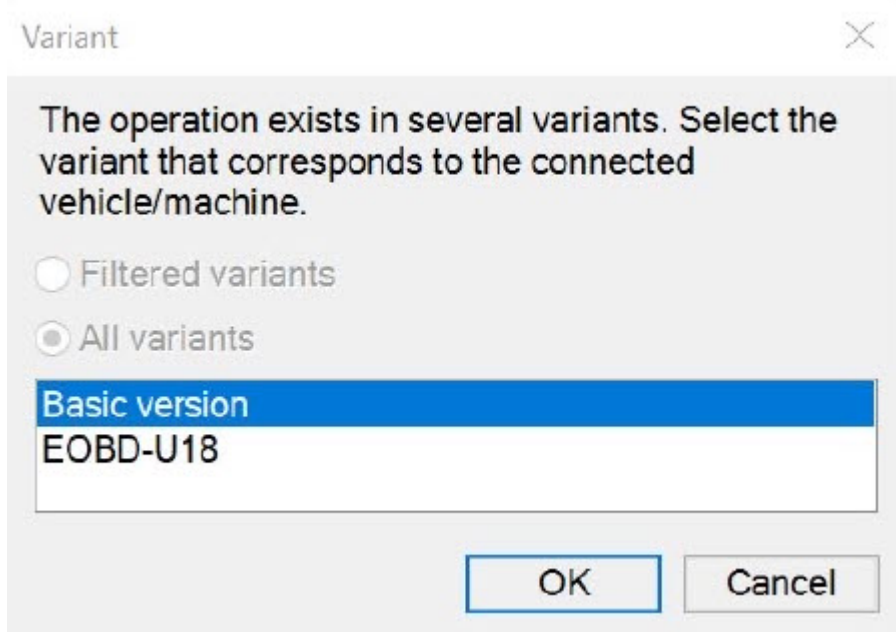


Figure 5

Start the operation by clicking the start button in the toolbar. After the conditions are confirmed, the operation will read data from the vehicle. A connection to Central Systems will be made in order to download the ESP system configuration file for the connected vehicle.

A window may open depending on what version of Tech Tool is being used. Select either option and hit OK.



After the ESP system configuration file is downloaded, a configuration window containing a status bar will appear while the ESP control unit is configured. [see figure 6]

- **Note:** On some occasions, the status bar window may appear blank. Although it appears that no action is occurring, the process is proceeding. In this case, allow the process to continue. The ABS ECU will be restarted and the configuration window will disappear when its task is complete and the process will continue in the main operation window.

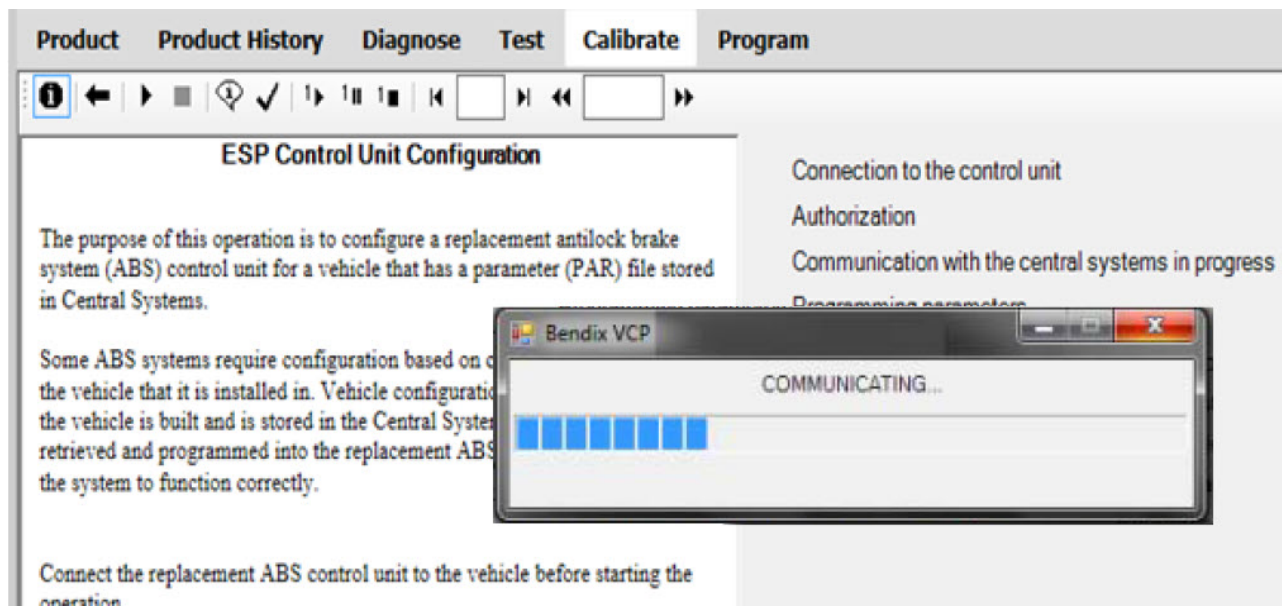


Figure 6

After the configuration is complete, the configuration window will be closed and another connection to Central Systems will be made in order to send a confirmation that the configuration has been completed successfully.

Once the configuration has been completed verify that the system air is fully charged. Apply ignition power and wait 30 seconds.

1. Use Bendix ACom Pro Diagnostic Software or ACom Diagnostic Software V6.7.2.5 (or higher) to clear the active pressure sensor DTC.
2. Carrying out the demand pressure sensor initialization procedure which involves applying service brakes of 90 psi or greater for three (3) seconds (while stationary).

Once this procedure is carried out successfully, if there are no other active DTCs, the ATC/ESP indicator lamp will no longer be illuminated.

 Tags [19-4](#) [vcp](#) [spn 807 fmi 13](#) [bendix](#) [volvo](#)

Categories 

[Make and Model > Volvo > VNL](#)

[Make and Model > Volvo > VNR](#)

[Make and Model > Volvo > VNM](#)

[Make and Model > Volvo > VNX](#)

[Make and Model > Volvo > VAH](#)

[Vehicle System > Brakes](#)

Related links and attachments

No content available



Feedback

[Give feedback](#) to help improve the content of this article