

# PREVOST

## Instruction Sheet

## IS-22050

### MOTION SENSOR RELOCATION

First Release




04-18-2023


### MATERIAL

Kit #341436 includes the following parts:

Part No.	Description	Qty
341435	SUPPORT SENSOR LOW PROFILE	1
685426	PLUG HOLE NYL BK .875 X .125	1
0600185	EXTENSION MOTION SENSOR HARNESS	1
504637	CABLE TIE, NYLON BLK (STD)	6
5001750	WSH FL N500 .16X.55X.039 (M4,#6)	4
7771955	DECAL	1
685427	GLUE LOCTITE 430 3GR.	1
IS-22050	INSTRUCTION SHEET	1

Other tools & material required:

Prevost Part No.		Description	Qty
38163		Jig - Drilling	1
N/A		5/32" Drill Bit	1
N/A		15/16 Hole saw	1

N/A		Cutting Oil – drilling (optional)	1
N/A		Phillips Screwdriver #3	1
N/A		Deburring Tool	1
N/A		Cutting Pliers	1
N/A		Drill 3/8 shank – Electric (cordless recommended)	1
N/A		Residue free degreaser	As req.

**NOTE**

*Material can be obtained through regular channels.*

## SAFETY PRECAUTIONS

- Eye protection should always be worn when working in a shop.
- Rules for Personal Protection Equipment should always be respected. Wear your PPE including but not limited to the following:



# Safety First!



## PROCEDURE



### DANGER

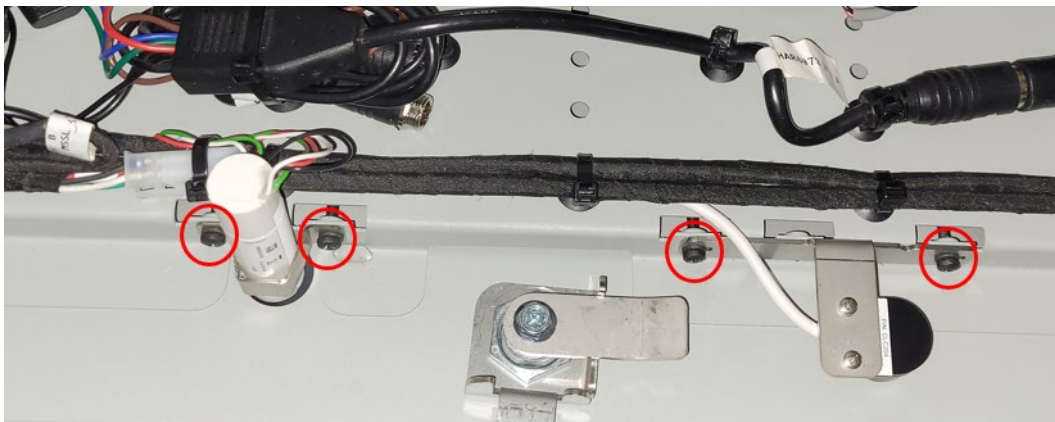
Park vehicle safely, apply parking brake, stop engine. Prior to working on the vehicle, set the ignition switch to the OFF position and trip the main circuit breakers equipped with a trip button. On Commuter type vehicles, set the battery master switch (master cut-out) to the OFF position.

Lock out & Tag out (LOTO) must be performed during set-up, maintenance or repair activities. Refer to your local procedure for detailed information regarding the control of hazardous energy.

1. Remove the decal and clean using a residue free degreaser (make sure there is no remaining glue).



2. Remove the motion sensor and the camera brackets.
  - Remove the four screws & lock washers shown (do not discard).

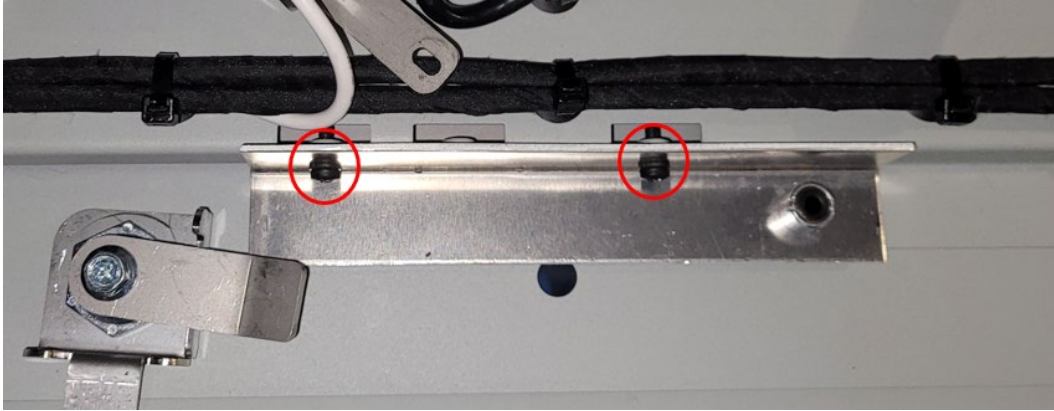


3. Move the sensor and the camera out of the work area.
  - Unplug the motion sensor and bracket (keep in a safe location).
  - Move the camera out of the way (do not unplug or remove from bracket).



4. Install the drilling jig.

- Using 2 of the previously removed screws, secure the drilling jig **38163** where the camera bracket was located (use 1<sup>st</sup> and 3<sup>rd</sup> screw position as shown)



5. Drill a pilot hole using the jig as a guide pilot hole.

- Using the 5/32" drill bit, drill a pilot hole through the panel.



6. Remove the drilling jig.

- Unscrew the drilling jig but do not discard the screws.



7. Drill a 15/16" hole through the inside layer of the panel.

- The panel in this area is made of 2 layers of sheet metal: from the inside of the compartment, drill a hole using a 15/16" hole saw (use the previously drilled pilot hole to guide the hole saw).

**NOTE**

*Do not drill through the second layer of metal from the inside as to minimize sharp edges and burrs as well as metal distortion inside the compartment.*



8. Drill a 15/16" hole through the exterior layer of the panel.

- Drill the second layer of steel from the front (outside), use the 15/16" hole saw and the same pilot hole used on the exterior side.



9. Debur both sides of the hole.

- Using a deburring tool, carefully debur both side of the hole (also slightly round the sharp edges).



10. Cap-off the old motion sensor hole in the panel.

- Use the supplied **685426** plug to cap the hole (gently bend tabs on the cap & insert both tabs in place with a few dabs of Loctite 430 super glue provided in the kit).



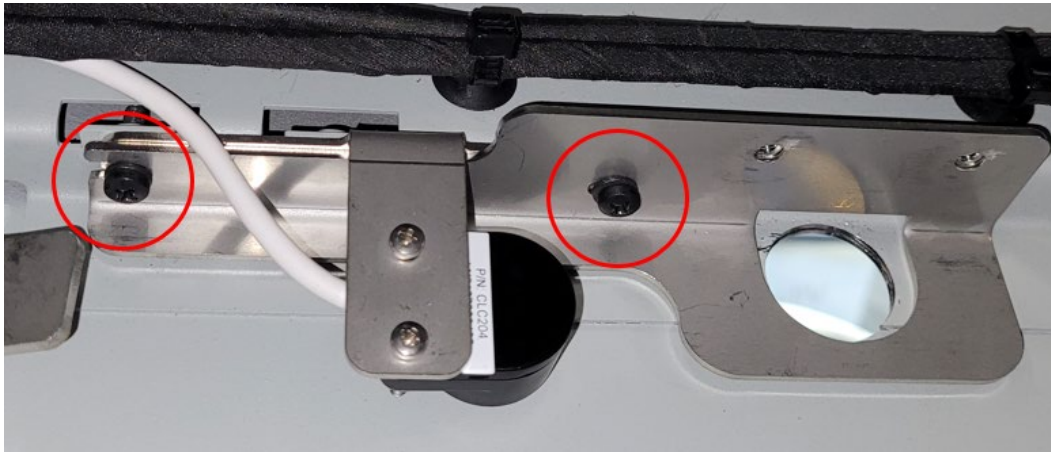
11. Put the camera back in position.

- Install the camera bracket using only 1 loose (half way) screw at the longest tab.



12. Position the new motion sensor bracket.

- Insert the open end (“U” shaped) tab of the supplied **341435** bracket *between the camera support and the screw lock washer* as shown.
- Add the second screw passing through both brackets and *hand tight* both screws.



13. Install the motion sensor on the new bracket.

- Using the two remaining screws and the original bracket, secure (hand tight) the motion sensor to the new bracket as shown.



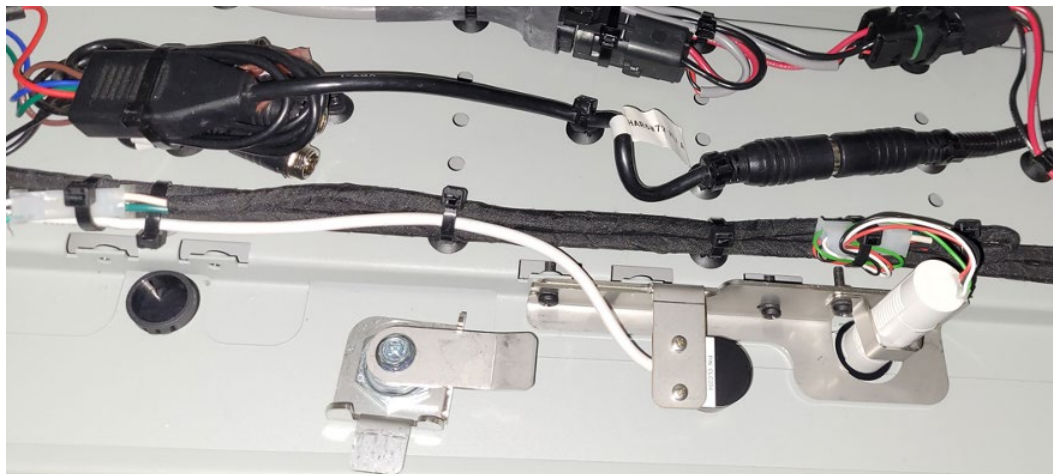
#### 14. Adjust the position of the motion sensor.

- Center the motion sensor as much as possible in the hole (with the left to right slotted holes in the new bracket).
- **NOTE:** for up and down adjustment (as required) refer to the appendix 1 at the end of the document).
- Tighten all four screws ;**TORQUE:** Firmly hand tight each screw (enough to compress the lock washer) then tighten half a turn more.



#### 15. Reconnect the motion sensor.

- Cut and remove old zip ties.
- Using the supplied **0600185** harness extension, reconnect the motion sensor to the vehicle harness.
- Secure the extension to the vehicle harness using the supplied **504637** cable ties.



16. Install a new decal.

- Stick the supplied **7771955** decal between the relocated motion sensor and the no smoking decal (below the trunk lock at about 2 3/4" from the top edge).



**APPENDIX 1 :MOTION SENSOR UP & DOWN ADJUSTMENT**  
**Sensor is touching the opening edge or is not centered**

1. If the sensor is rubbing against the metal or needs to be centered (moved up).



2. Insert the supplied **5001750** flat washers between the camera bracket and the motion sensor bracket (use one or two washers on each side as required).



3. This will move the sensor away from the edge (sensor must not touch the edge and be centered as much as possible).



## **PARTS / WASTE DISPOSAL**

Discard waste according to applicable environmental regulations (Municipal/State[Prov.]/ Federal)