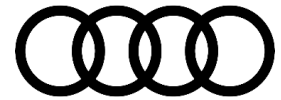


Technical Service Bulletin



00 Manual hood release procedure when 12 volt battery is depleted

00 23 65 2064296/2 April 13, 2023. Supersedes Technical Service Bulletin Group 00 number 21-50 dated August 17, 2021, for reasons listed below.

Model(s)	Year	VIN Range	Vehicle-Specific Equipment
e-tron GT, and RS e-tron GT	2022 – 2024	All	Not Applicable

Condition

REVISION HISTORY		
Revision	Date	Purpose
2	-	Revised header (Added new Model Years)
1	08/17/2021	Initial publication

The hood cannot be opened if the 12-volt battery has been depleted.

Technical Background

The service procedure described in the Self-Study Program (SSP) 684 – Audi e-tron GT (type F8), using the emergency power supply is not applicable to the US market.

Production Solution

Revised instructions for manual release of the hood.

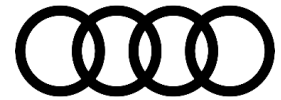
Service

If the 12-volt battery has been depleted the hood will need to be released manually.



Note:

Since the wheels will be blocked by the parking pawl or the parking brake, wheel dollies will be needed to maneuver the vehicle onto a hoist.



1. Raise the vehicle and remove the underbody panel (Figure 1).

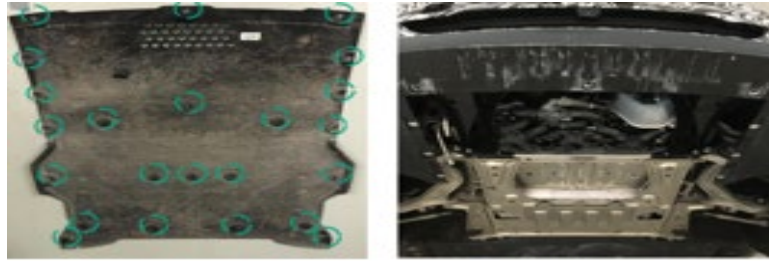


Figure 1. Underbody panel removed.

2. From underneath the vehicle, locate the front hood latch release actuator, F573, shown (Figure 2). F573 is connected to the hood latch via a Bowden cable.



Figure 2. Hood latch release actuator location.

3. Using a long hook tool or similar, slide only the Bowden cable end towards the actuator (Figure 3).



Figure 3. Slide only Bowden cable toward actuator.

4. Once the hood latch is released, continue with normal charging and diagnosis.

Warranty

This TSB is informational only and not applicable to any Audi warranty.



Additional Information

All part and service references provided in this TSB (**2064296**) are subject to change and/or removal. Always check with your Parts Department and/or ETKA for the latest information and parts bulletins. Please check the Repair Manual for fasteners, bolts, nuts, and screws that require replacement during the repair.

©2023 Audi of America, Inc. All rights reserved. The information contained in this document is based on the latest information available at the time of printing and is subject to the copyright and other intellectual property rights of Audi of America, Inc., its affiliated companies, and its licensors. All rights are reserved to make changes at any time without notice. No part of this document may be reproduced, stored in a retrieval system, or transmitted in any form or by any means, electronic, mechanical, photocopying, recording, or otherwise, nor may these materials be modified or reposted to other sites, without the prior expressed written permission of the publisher.