



April 11, 2023

Technical Service Bulletin: TSB #23-01

Subject: Guide for Proper Sealing of the Overland Series

Dear Valued Dealer:

Ember has determined that some Overland series units require additional waterproofing and repair or replacement of existing seals. This is to ensure the unit is suitably resistant to water intrusion.

This document is intended to serve as a technical resource to facilitate Dealer inspection and repair.

TSB Scope: VIN's 7RVTV1225NA000011 to 7RVTV1205PA001046

If a unit is in scope and is currently part of the inventory at your dealership, this repair is required *prior to retail sale*.

This technical service bulletin supersedes TSB #22-001.

All pertinent information regarding this Bulletin is on file on the Ember dealer portal or available through an Ember Ownership Experience representative. If you have questions, please contact Ember Ownership Experience at warranty@emberrv.com.

We apologize for any inconvenience or concern this Bulletin may cause and want to assure you that Ember is taking all necessary steps to ensure our product quality meets your expectations.

Sincerely,

Ember Recreational Vehicles

Ember Technical Service Bulletin 23-01

Guide for Proper Sealing of the Overland Series



Document Title:	Guide for Proper Sealing of the Overland Series		
Document Type:	Technical Service Bulletin	Publication Date:	April 11, 2023
Bulletin #:	23-01	Make and Model:	Ember Overland
Flat Rate Code:	50000139	Model Year:	2022 and 2023
Time Allowed:	Overland Micro Series: 1.5 hours Overland Series: 3 hours		

Material List		
Item Index	Ember Part Number	Description/Material Type
1	40000209	Black 3" Eternabond Tape
2	95000040	Black Silicone Sealant with Biocide
3	45000092	Self-leveling compound
4	40000350	Clear Silicone Sealant with Biocide

Purpose of this Document

- This document is a technical resource to properly seal the Overland series units.
- If a prior claim has been submitted for the sealing of an Overland series, please contact Ember ownership experience for guidance.
- Ownership Experience Team: warranty@emberrv.com

General Guidance

- Using the material 'type' identified in the materials list is required. It is not mandatory to purchase these materials directly from Ember.
- It is critical to clean surfaces according to the sealant application instructions. Failure to complete this step will result in premature sealant failure and will not be warranted by Ember.
- Use the minimum amount of sealant necessary as the excess sealant can result in an incomplete cure and voids.
- Use a sealant appropriate for the application. For external use, use a sealant with a biocide as it inhibits mold growth and slows degradation over time.
- Tool gunnable sealants to completely cover joints; allow time to cure per material manufacturer instructions.
- To validate the unit is properly sealed, rain bay or pressure testing is required.

Common Leak Locations

- *Baggage Doors*
- *Slide-out*
- *Fenders*
- *Entry Door*
- *Exoskeleton Trim*
- *Tail Lamps and Rear Clearance Reflectors*

Legend

Red = Common Leak Location

Yellow = Occasional Leak Location

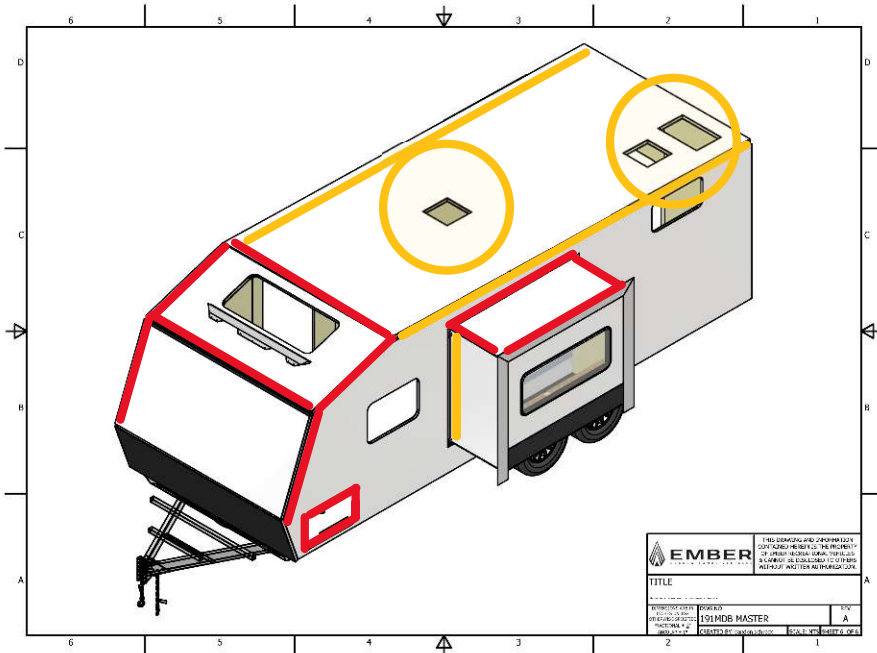
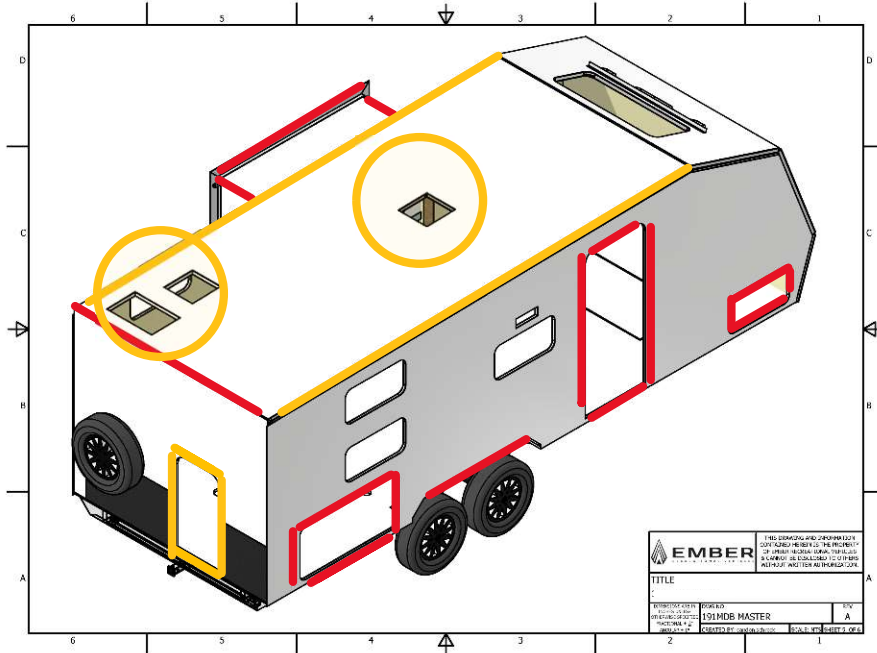


Figure 1

Baggage Doors

1. Inspect the rubber seal for damage and snug fitment to the frame of the door.
2. Inspect installation screws and apply gunnable sealant if needed.
3. Shut the door and check for light leaks. If light is visible, apply gunnable sealant around the exterior flange. A warranty claim may be necessary if this fails to block the light.

Interior of the Slide-Out

1. Ensure that wipes are flat against the slide-out roof.
2. Use Item 1 from the material list to seal at the junction of the fascia and the slide out as shown in Figure 2.
3. Overlap the corners as shown in Figure 2.
4. Use item 1 to seal the length of the slide out as shown in Figure 3.



Figure 2



Figure 3

Exterior of the Slide-Out (1 of 2)

These instructions apply to both slide out end walls and assumes no tape or other sealant is present. If this is not the case, contact Ember.

1. Seal the areas in red with gunnable sealant as shown in Figure 4.
2. Once the sealant has cured, use tape (item 1) to seal the junction of the external fascia and the slide out. Ensure tape overlaps the corners of the slide as shown in Figure 4.



Figure 4

Exterior of the Slide-Out (2 of 2)

Check around the fender area (figure 5) and confirm:

1. The wipes are flat, facing outward.
2. The bulb seal is fitted correctly.
3. No visible gaps are present in the fender structure.

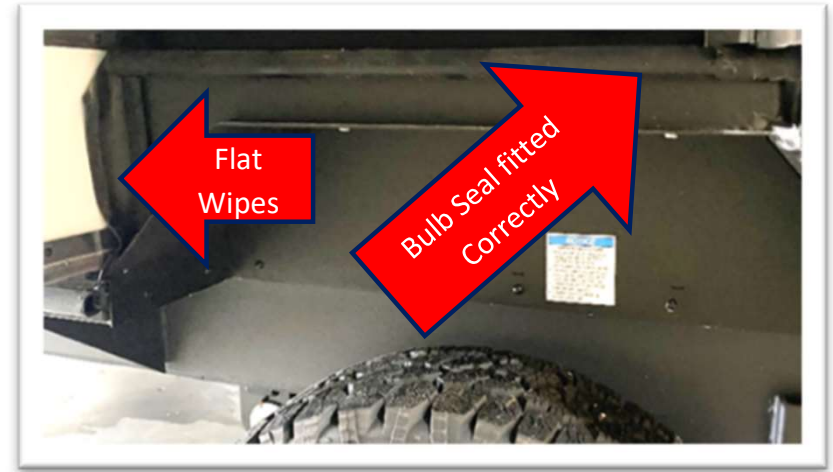
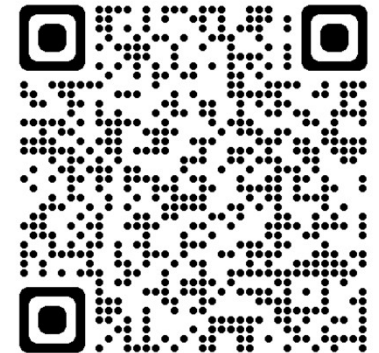


Figure 5

Additional Information for Schwintek Slide Outs

Lippert Components has created a guide for mitigating water intrusion on Schwintek model slides.

To access the document, scan the QR code, to the right, with your appropriate device or paste the following link into your browser;
<https://lci-supportdoc.s3.amazonaws.com/quickreferences/ccd-0003529.pdf>.



- Key Takeaways:
 - Clean the main seal and drain channels to remove dirt, debris, and foreign objects.
 - Inspect the main seal for proper contact with the slide box.
 - Inspect the bearing blocks and the end plugs on the gear racks.

Fenders (1 of 2)

This page applies to both fenders on units without a slide-out and the curbside fender on units with a slide-out

1. To prep the surface for sealant application, clean both fenders using a mild detergent. Permit the surface to dry.
2. Seal the fenders using gunnable sealant.
3. Run beads as shown in Figures 6 and 7.
4. Tool the sealant until it is smooth and completely covers the joint.
5. Allow the sealant to cure per the manufacturer's instructions.



Figure 6



Figure 7

Fenders (2 of 2)

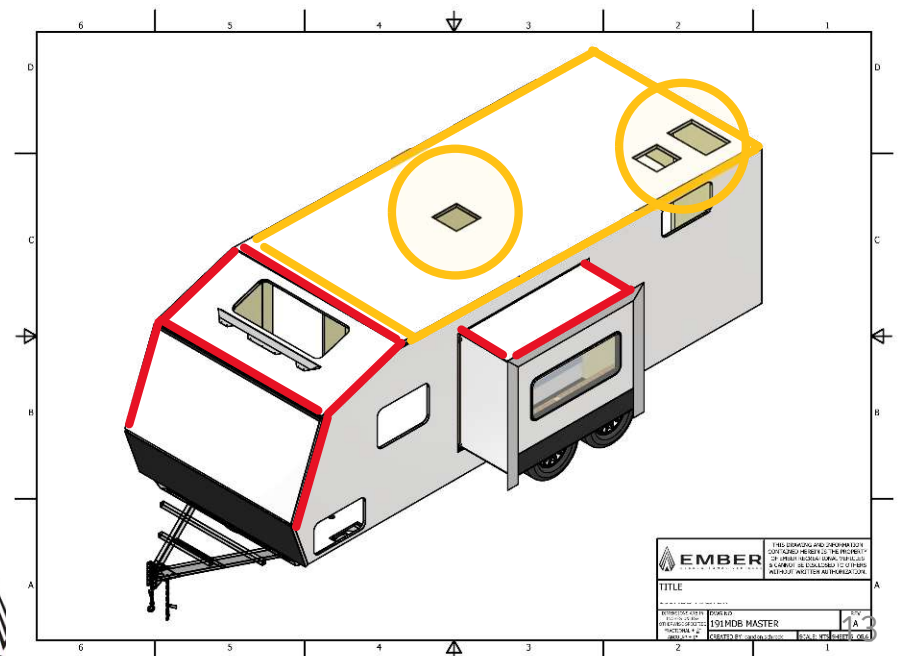
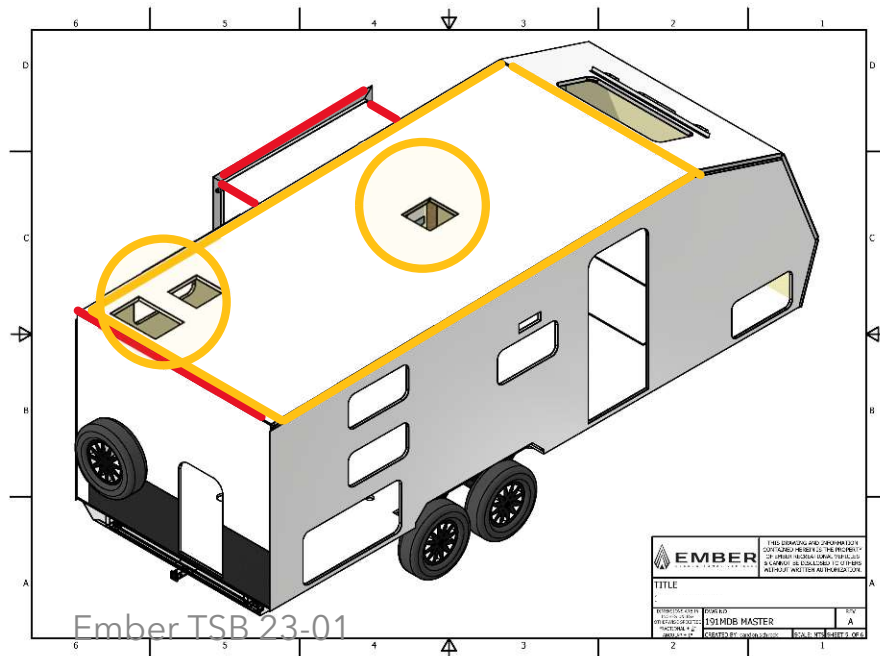
This page applies to the fender on slide-out units

- Seal in the areas shown to the right using gunnable sealant.
- Tool the sealant until it is smooth and completely covers the joint
- Allow the sealant to cure per the manufacturer's instructions.



Exoskeleton and Roof Accessories

- The black metal trim pieces are referred to as the exoskeleton.
- Exoskeleton leaks commonly occur at the junction of the trim pieces.
- Use self-level to seal the trim identified in yellow below. Use gunnable sealant to for items in red.
- IMPORTANT: completely seal the screw heads on the roof trim, front-facing trim, and junction pieces.
- Seal along both sides of the exoskeleton trim and junction pieces. Tool the beads so that there are no bubbles or gaps.
- Do not remove exoskeleton pieces unless approved by Ember; this breaks the waterproof seal and voids the warranty.

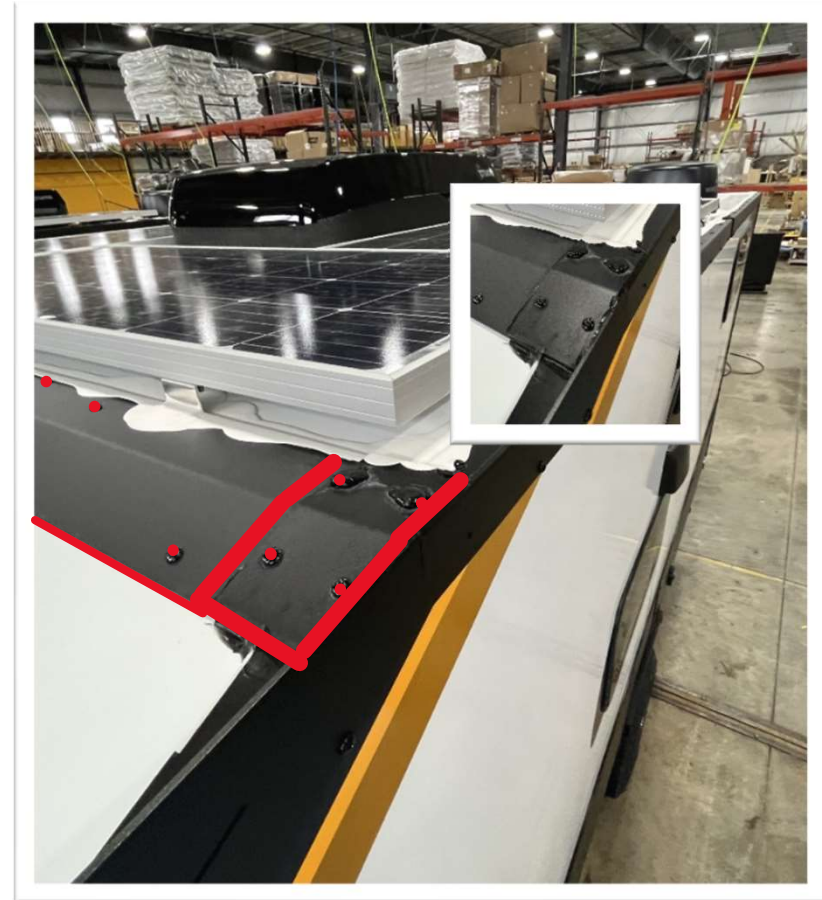


Exoskeleton Top Front Junction Piece

These instructions apply to the junction pieces on both sides.

1. Prep the surface per the sealant manufacturer's instructions.
2. Seal the areas in red as shown to the right.
3. Tool the sealant until it is smooth and completely covers any gap.
4. Allow the sealant to cure per the manufacturer's instructions.

Note: Self-leveling will be applied at a later step.



Exoskeleton Middle Front Junction Piece

These instructions apply to the junction pieces on both sides.

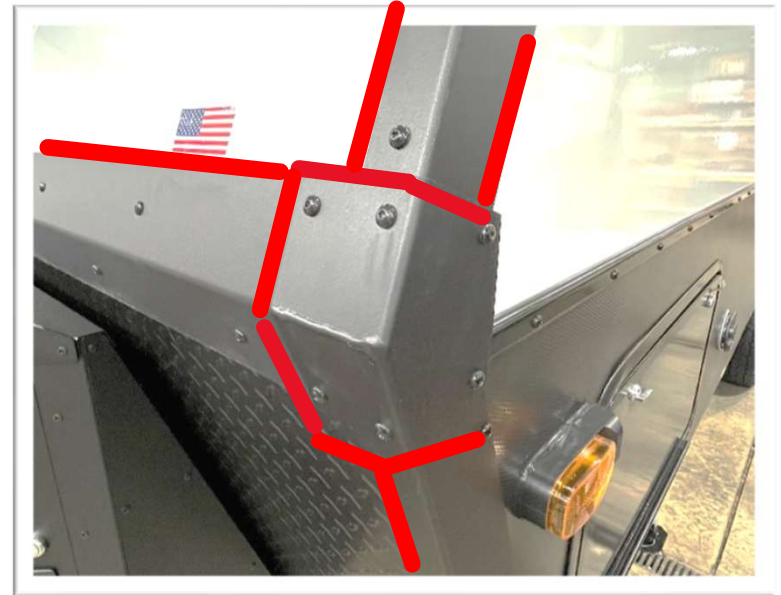
1. Prep the surface per the sealant manufacturer's instructions.
2. Seal the areas in red as shown to the right.
3. Tool the sealant until it is smooth and completely covers any gap.
4. Allow the sealant to cure per the manufacturer's instructions.



Exoskeleton Bottom Front Junction Piece

These instructions apply to the junction pieces on both sides.

1. Prep the surface per the sealant manufacturer's instructions.
2. Seal the areas in red as shown to the right.
3. Tool the sealant until it is smooth and completely covers any gap
4. Allow the sealant to cure per the manufacturer's instructions.



Exoskeleton Top Rear Junction Piece

These instructions apply to the junction pieces on both sides.

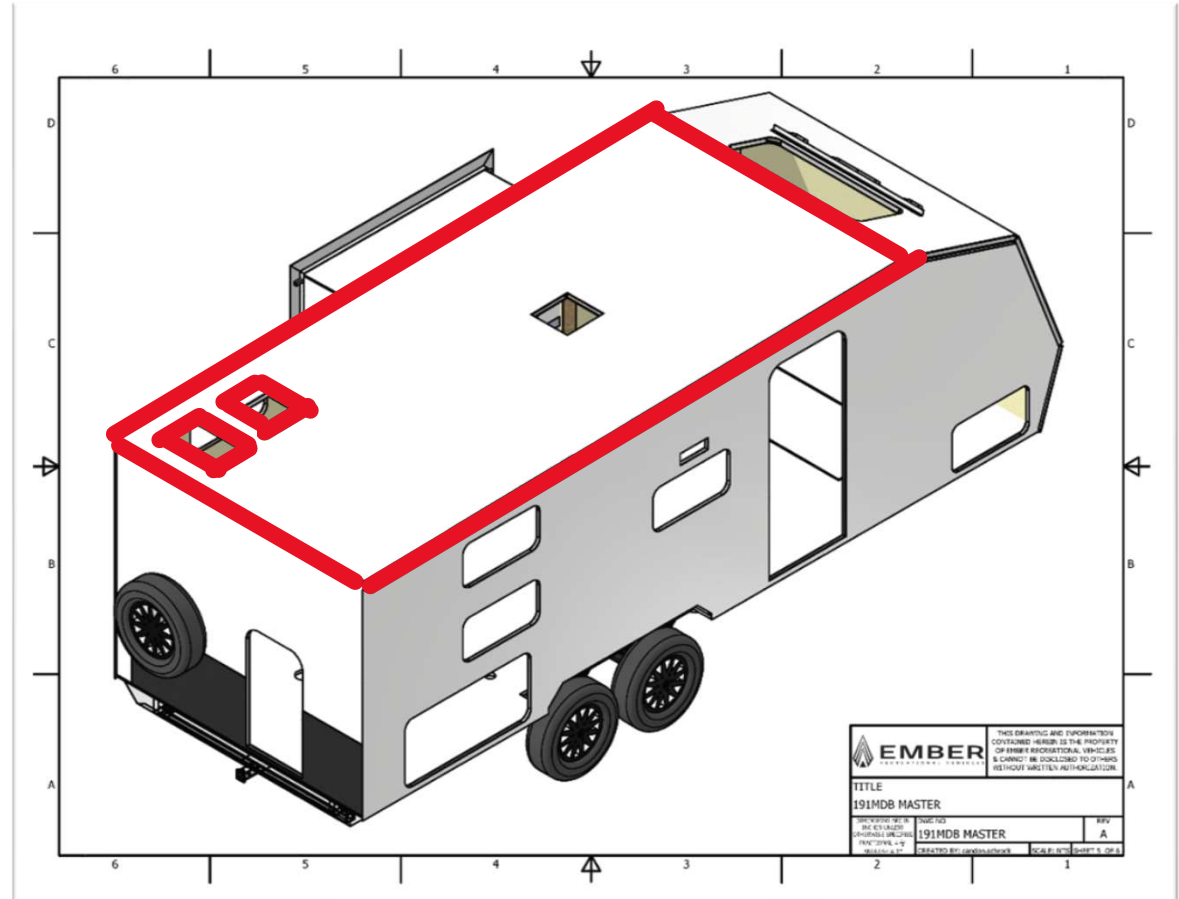
1. Prep the surface per the sealant manufacturer's instructions.
2. Seal the areas in red as shown to the right.
3. Tool the sealant until it is smooth and completely covers any gap.
4. Allow the sealant to cure per the manufacturer's instructions.

Note: Self-leveling will be applied at a later step.



Exoskeleton Roof Trim and Vents - self leveling application

1. Use self-leveling compound for the areas in red as shown to the right.
2. Use self-level or gunnable sealant to seal all screw heads.
3. Allow the sealant to cure per the manufacturer's instructions.



Entry Door

1. Ensure the threshold piece is installed at a slight angle away from the coach to permit water to drain away.
2. Ensure the door frame is compressed against the sidewall of the unit and sealant tape is applied to the back side of the screw track.
3. Ensure that the drip cap is installed correctly.
4. Run a bead of gunnable sealant on the bottom of the threshold (Fig. 8) and along the entire width of the door. Do not leave any seal voids at the corners (Fig. 8A and B).



Figure 8

5. Run a bead of gunnable sealant around the edges of the door frame.
6. Check the seal on the outer frame, replace it if pinched or torn.
7. Ensure screw covers are installed on doors.

Tail Lamps and Rear Side Reflectors

These instructions apply to tail lamps and rear side reflectors on both sides.

1. Remove the chrome bezel.
2. Seal around the entire lamp or reflector using a clear silicone sealant.
3. Clean away excess material immediately.
4. Allow the sealant to cure before reinstalling the bezel.

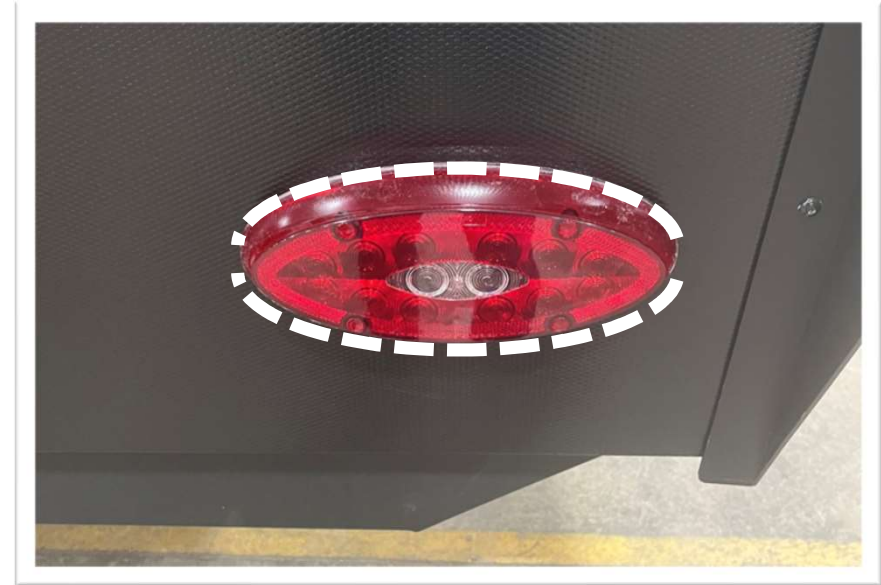


Figure 10: Tail Lamp



Figure 11: Rear Side Reflectors