



## STAR ONLINE PUBLICATION



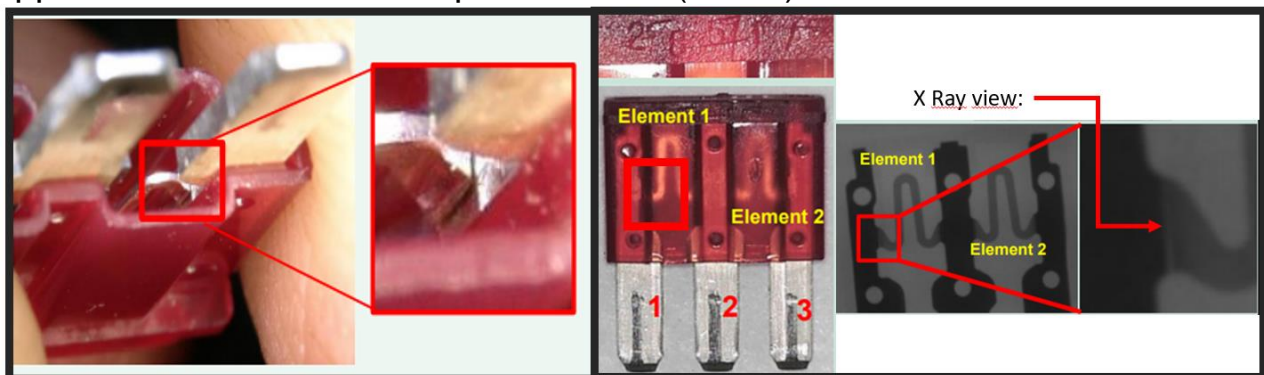
**Case Number:** S2208000174 Rev. A

**Release Date:** February 2023

**Symptom/Vehicle Issue:** No Crank, No Start. Service Air Suspension Message Displayed In The Cluster

**Discussion:** The customer may find that the Service Air Suspension message is displayed in the Cluster. The vehicle may also exhibit a no crank, no start. Upon scanning the vehicle, you may find one or more of the following DTC's: U0100-00 Lost Communication With ECM/PCM, B2204-87 ECU Configuration Mismatch-Missing Message, U0422-00 Implausible Data Received From the Body Control Module.

This may be caused by a broken leg on Fuse F23 in the Underhood Power Distribution Center (PDC). One leg provides ignition run feeds to the Powertrain Control Module (PCM), Brake System Control Module (BSCM), and Front Lamp Assemblies. While the other leg provides ignition run feeds to the Air Suspension Control Module (ASCM) and if equipped Electronic Limited Slip Differential (ELSD).



### Broken Leg On F23

This document does not authorize warranty repairs. This communication documents a record of past experiences. STAR Online does not provide any conclusions about what is wrong with the vehicle. Rather, it captures all previous cases known that appear to be similar or related to the vehicle symptom / condition. You are the expert, and you are responsible for deciding on the appropriate course of action.

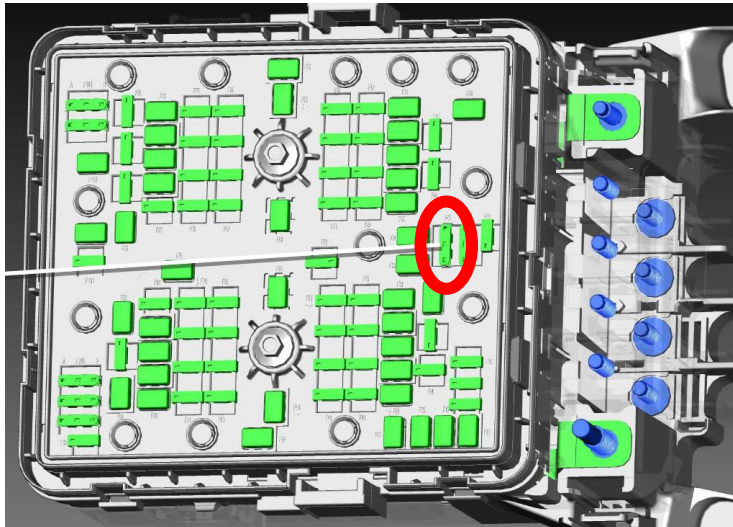
**Contact STAR Center, or your Technical Assistance Center Via TechConnect, eCONTACT or Service Library entry if no solution is found.**



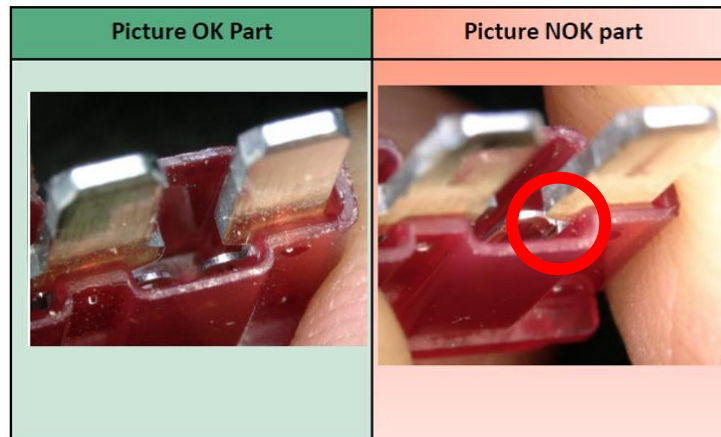
## STAR ONLINE PUBLICATION



**Diagnosis:** Inspect Fuse 23 in the Underhood PDC. Because visually identifying the broken fuse may be difficult. You should perform a voltage drop across the fuse test points and/or replace the fuse to verify root cause.



**Underhood PDC F23 Location**



**OK VS Not OK F23**

**Repair Procedure:** If it is verified that F23 is the root cause, replace the fuse.

This document does not authorize warranty repairs. This communication documents a record of past experiences. STAR Online does not provide any conclusions about what is wrong with the vehicle. Rather, it captures all previous cases known that appear to be similar or related to the vehicle symptom / condition. You are the expert, and you are responsible for deciding on the appropriate course of action.

**Contact STAR Center, or your Technical Assistance Center Via TechConnect, eCONTACT or Service Library entry if no solution is found.**