

2024 NX 250, NX 350, NX 350h, NX 450h+ Pre-Delivery Service (PDS)

Service Category General

Section Pre-Delivery Service

Market USA and Mexico

Toyota Supports
ASE Certification 

Applicability

YEAR(S)	MODEL(S)	ADDITIONAL INFORMATION
2024	NX250, NX350, NX350H, NX450H+	

Introduction

This bulletin contains the vehicle specific pre-delivery services for 2023 model year NX 250, NX 350, NX 350h, and NX 450h+ vehicles. Additionally, refer to the applicable Pre-Delivery Service (PDS) Check Sheet for services to be performed.

2024 NX 250, NX 350, NX 350h, NX 450h+ Pre-Delivery Service (PDS)

Table of Contents

- [Warranty Information](#)..... 3
 - [For USA Market](#)..... 3
 - [For Mexico Market](#)..... 3
- [Required Tools & Equipment](#) 3
- [D/C Cut Fuse Installation](#) 4
- [Head Unit System Reset](#)..... 5
- [Seating Position Control ECU Initialization](#)..... 5
- [Power Back Door Initialization](#)..... 5
- [Memorize Steering Angle Neutral Point*](#) 6
 - [Hybrid Engine](#) 6
 - [Gasoline Engine](#) 6
- [Parking Support Brake System Calibration*](#) 7
- [Customize ACC Function](#)..... 7
- [Tire Pressure Warning System \(TPWS\) Initialization](#)..... 7
- [Front License Plate and Mounting Bracket Installation*](#)..... 8
- [Enable Hybrid Battery Thermal Keep Control Mode*](#) 10
 - [Confirm Hybrid Battery Thermal Control Mode State](#) 10
 - [Set Hybrid Battery Thermal Keep Control Mode](#) 11
- [Navigation — Set Date & Time by GPS](#) 12
- [Set Remote Park Feature to OFF*](#) 12
- [Installation of Rubber Body Plugs](#) 13

*If applicable.

2024 NX 250, NX 350, NX 350h, NX 450h+ Pre-Delivery Service (PDS)

Warranty Information

For USA Market

OP CODE	DESCRIPTION	TIME	OFFP	T1	T2
N/A	Not Applicable to Warranty	-	-	-	-

For Mexico Market

OP CODE	DESCRIPTION	TIME	OFFP	T1	T2
N/A	Not Applicable to Warranty	-	-	-	-

Required Tools & Equipment

REQUIRED EQUIPMENT	SUPPLIER	PART NUMBER	QTY
Techstream ADVi*	ADE	TSADVUNIT	1
Techstream 2.0		TS2UNIT	
Techstream Lite		TSLITEPDLR01	
Techstream Lite (Green Cable)		TSLP2DLR01	

*Essential SST.

NOTE

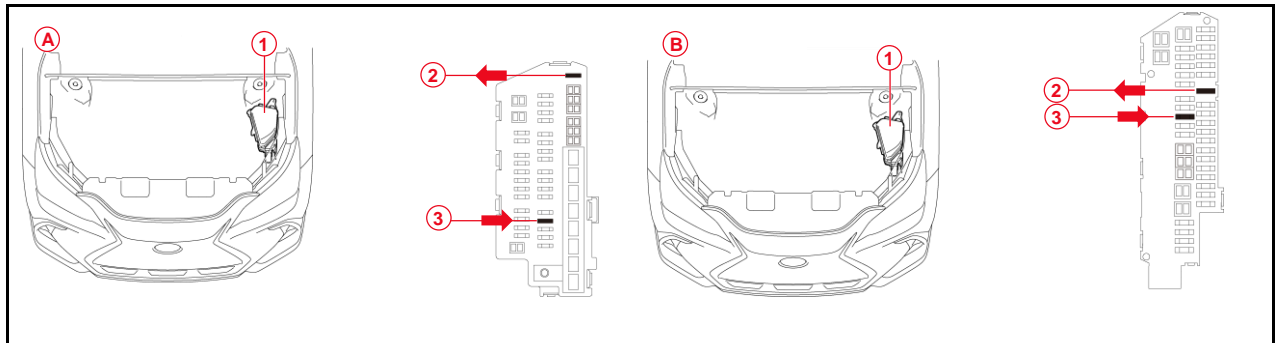
- Only ONE of the Techstream units listed above is required.
- GTS+ software version 2022.04.004.02 or later is required.
- Additional Techstream units may be ordered by calling Approved Dealer Equipment (ADE) at 1-800-368-6787 (USA) or 01-55-50103041 (Mexico).

2024 NX 250, NX 350, NX 350h, NX 450h+ Pre-Delivery Service (PDS)

D/C Cut Fuse Installation

To minimize battery discharge during transportation and storage, the D/C cut fuse (20A) has been removed at the assembly plant and temporarily stored in the blank space of the relay block in the engine compartment. During PDS, reinstall the D/C cut fuse (20A) into its original location and clear ALL related Diagnostic Trouble Codes (DTCs).

Figure 1.



A	NX 250, NX 350, and NX 350h (USA, Mexico)
B	NX 450h+ (USA)
1	Relay Block
2	Remove D/C Cut Fuse (20A)
3	Install D/C Cut Fuse (20A) (Original Location)

NOTE

While the vehicle is stored at the dealership, disconnect the negative (-) battery terminal to prevent battery discharge. Refer to [L-SB-0016-23](#) (USA) or [L-SB-0017-23](#) (Mexico) *Battery Maintenance During PDS*, for battery maintenance information.

2024 NX 250, NX 350, NX 350h, NX 450h+ Pre-Delivery Service (PDS)

Head Unit System Reset

Before vehicle delivery, please confirm that the welcome screen with language options appears on the head unit display when the ignition is switched to the ON position. There may be instances where the welcome screen with language options may not properly appear on the head unit display.

If the welcome screen showing language options is not displayed, complete the following steps:

1. Select the Settings option (gear icon).
2. Scroll down and select the Info & Security option.
3. The System Reset dialogue box will appear. Select Reset to confirm the resetting of the system.

Confirm that the welcome screen with language options is now displayed.

Seating Position Control ECU Initialization

Refer to the applicable Repair Manual for the seating position control ECU initialization procedure ([NX 250](#) / [NX 350](#) / [NX 350h](#) / [NX 450h+](#)). (procedure 2).

Power Back Door Initialization

Initialize the power back door system AFTER installing the D/C cut fuse during PDS by fully closing the back door manually.

2024 NX 250, NX 350, NX 350h, NX 450h+ Pre-Delivery Service (PDS)

Memorize Steering Angle Neutral Point

As a result of the removal of the D/C cut fuse, the power source to the steering angle sensor is cut off. When the D/C cut fuse is reinstalled, the parking assist monitor system/panoramic view monitor will be operative, but it cannot display guidelines to assist parking operation because the center position recognized by the steering angle sensor may not be in an initial position. Therefore, perform steering angle neutral point initialization AFTER installing the D/C cut fuse during PDS.

Hybrid Engine

1. Start the engine.
2. Ensure the panoramic view monitor is operative.
3. Place the shifter in the (R) Reverse position.
4. Ensure the estimated course lines are displayed.

NOTE

Initialization of the panoramic view monitor system has been completed when the estimated course lines are displayed.

Gasoline Engine

1. Start the engine.
2. Turn the steering wheel lock to the locked position.
3. Place the shifter in the (R) Reverse position.
4. Ensure the estimated course lines are displayed.

NOTE

Initialization of the panoramic view monitor system has been completed when the estimated course lines are displayed.

2024 NX 250, NX 350, NX 350h, NX 450h+ Pre-Delivery Service (PDS)

Parking Support Brake System Calibration

As a result of the removal of the D/C cut fuse, the steering angle sensor power source is cut off. When the D/C cut fuse is reinstalled, the center position recognized by the steering angle sensor may not be the appropriate position. Therefore, it is necessary to perform intelligent clearance sonar system calibration AFTER installing the D/C cut fuse during PDS.

Refer to the applicable Repair Manual for the intelligent clearance sonar system calibration procedure:

- Driving Method: ([NX 250](#) / [NX 350](#) / [NX 350h](#) / [NX 450h+](#)).
- Techstream Method (procedure 4): ([NX 250](#) / [NX 350](#) / [NX 350h](#) / [NX 450h+](#)).

Customize ACC Function

The pre-startup function detects when a user enters the vehicle and energizes the audio head unit (+BA) so that the multimedia system can quickly be used. This function is not enabled at the factory to reduce parasitic current draw in transit and storage. To enable this function, it is necessary to set the ACC customization function in the navigation display to OFF within the GTS+ software.

1. Turn the engine switch (power switch) to the ON position (ON mode).
2. Enter the following menus: *Settings – Vehicle Customization – Utility – ACC Customize*.
3. Change the setting to OFF (toggle at left with gray background).

Tire Pressure Warning System (TPWS) Initialization

Refer to the applicable Repair Manual for the TPWS initialization procedure ([NX 250](#) / [NX 350](#) / [NX 350h](#) / [NX 450h+](#)). Note the spare tire does NOT have a TPWS sensor.

NOTE

To adjust the tire pressure correctly when the outside temperature is significantly colder than the shop temperature, perform a Health Check using Techstream and select the compensation tire pressure checkbox. Compensation pressures will display on the Health Check results screen. Adjust the tire pressure when the tires are cold.

2024 NX 250, NX 350, NX 350h, NX 450h+ Pre-Delivery Service (PDS)

Front License Plate and Mounting Bracket Installation

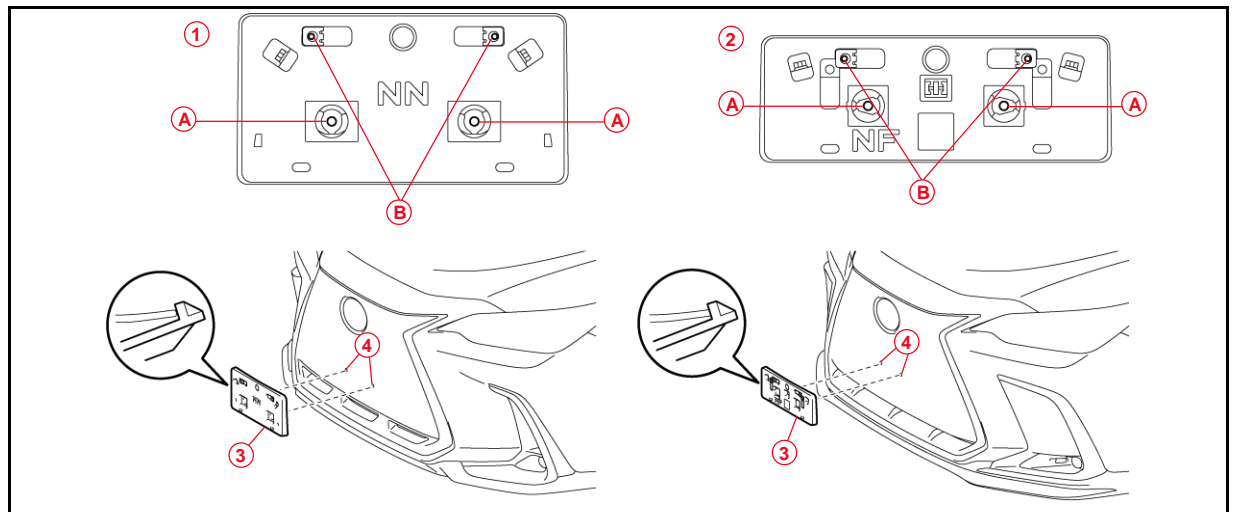
The front license plate mounting bracket and two self-tapping screws are stored in the vehicle. For states that require a front license plate, install the front license plate and mounting bracket during PDS.

- Align holes "A" of the mounting bracket with the dimples on the radiator lower grille.

NOTE

- Holes "A" are used for installation of the front license plate mounting bracket to the radiator lower grille.
- Holes "B" are used to install the license plate onto the mounting bracket.

Figure 2.



1	Type A
2	Type B
3	Mounting Bracket
4	Dimple

- Install the mounting bracket to the radiator lower grille by installing the two self-tapping screws directly into the dimples.

NOTICE

Do NOT overtighten the self-tapping screws.

2024 NX 250, NX 350, NX 350h, NX 450h+ Pre-Delivery Service (PDS)

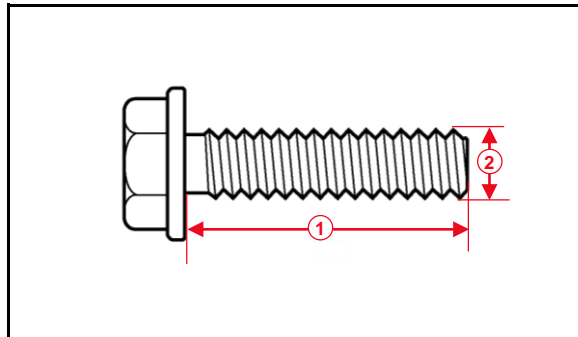
Front License Plate and Mounting Bracket Installation (continued)

- Install the front license plate onto the mounting bracket using two noncorroding bolts with the following dimensions:

Nominal Length: 15.0 mm (0.59 in.)

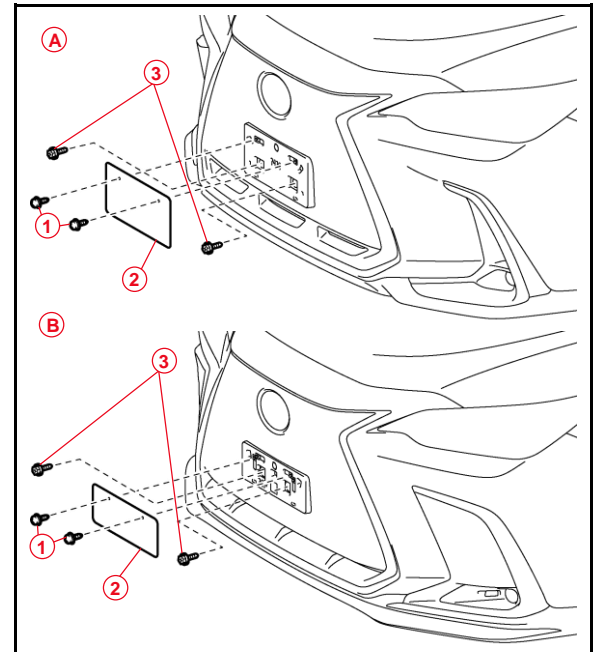
Diameter: 6.0 mm (0.24 in.)

Figure 3.



1	Nominal Length
2	Diameter

Figure 4.



A	Type A
B	Type B
1	Bolt
2	Front License Plate
3	Self-tapping Screw

2024 NX 250, NX 350, NX 350h, NX 450h+ Pre-Delivery Service (PDS)

Enable Hybrid Battery Thermal Keep Control Mode

HV/BEV battery may be frozen in extremely cold areas. As a result, the HV/BEV battery may become excessively weak, and the system may NOT be able to be started. By enabling HV/BEV Battery Thermal Keep Control Mode, it is possible to warm the HV/BEV battery and maintain its current temperature in order to prevent it from becoming excessively weak.

When this mode is set to ON, the timer charging settings are canceled at temperatures of 14°F (-10°C) or lower. Charging will begin immediately when the charging cable is connected to the vehicle.

Table 1. HV/BEV Battery Thermal Keep Control Mode

PURPOSE	CONDITION	OPERATION
Prevent HV/BEV battery from freezing	<ul style="list-style-type: none"> Ambient temperature is 14°F (-10°C) or lower 	<ul style="list-style-type: none"> Begins to warm the HV/BEV battery to maintain its current temperature when the ambient temperature drops to 14°F (-10°C) or lower when the charging cable is connected to the vehicle.
	<ul style="list-style-type: none"> Charging cable is connected to vehicle 	<ul style="list-style-type: none"> To prevent the HV/BEV battery from freezing when a charging start time is set, when the HV/BEV Battery Thermal Keep Mode is enabled, the charging timer will be disabled, and charging will begin immediately when the charging cable is connected to the vehicle.

To enable HV/BEV Battery Thermal Keep Control Mode, it is necessary to use GTS+ during PDS at the dealership.

Confirm Hybrid Battery Thermal Keep Control Mode State

1. Connect the Techstream to the DLC3.
2. Turn the power switch IG-ON.
3. According to the display on Techstream, read the Data List. Read the Data List on GTS+ software by entering the following menus: *Powertrain – HV Battery – Data List – Hybrid Battery Thermal Keep Control Mode Status*.
4. Check the results by referring to the following table:

Table 2.

TESTER DISPLAY	MEASUREMENT ITEM	RANGE	NORMAL CONDITION
Hybrid Battery Thermal Keep Control Mode Status	Hybrid Battery Thermal Keep Control Mode State	ON or OFF	ON: Enabled OFF: Disabled

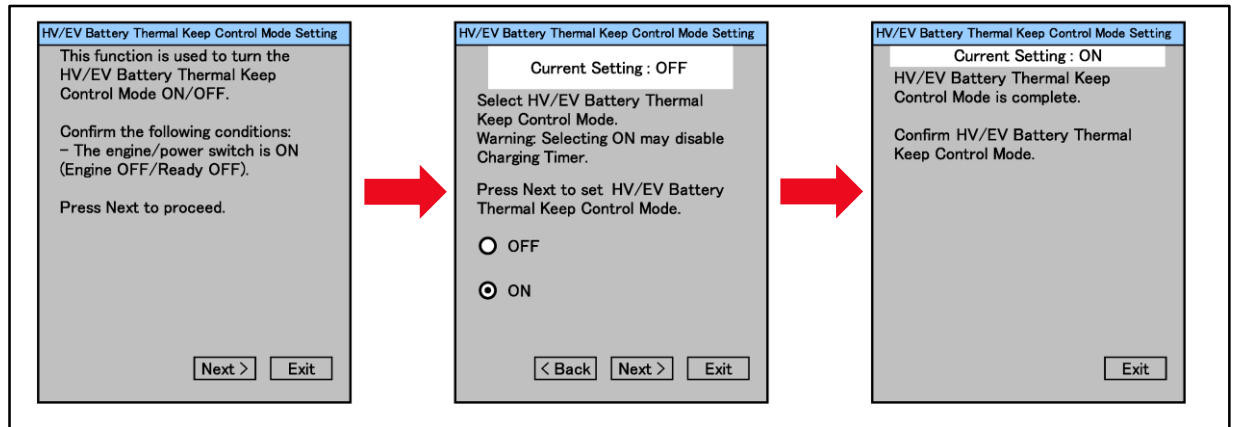
2024 NX 250, NX 350, NX 350h, NX 450h+ Pre-Delivery Service (PDS)

Enable Hybrid Battery Thermal Keep Control Mode (continued)

Set Hybrid Battery Thermal Keep Control Mode

1. Connect the Techstream to the DLC3.
2. Turn the power switch to IG-ON.
3. Turn the Techstream ON.
4. Enter the following menus: *Powertrain – HV Battery – Utility – Hybrid Battery Thermal Keep Control Mode.*

Figure 5.



5. Confirm the following message is displayed:
"This function is used to turn the Hybrid Battery Thermal Keep Control Mode ON / OFF."
6. Confirm that the conditions displayed on the screen are met, and then press Next.

NOTE

The power switch is ON (Ready OFF).

7. Confirm the following message is displayed:
"Select Hybrid Battery Thermal Keep Control Mode."
8. Select ON and press Next.

NOTICE

Selecting ON may disable the charging timer.

9. Confirm the following message is displayed:
"Hybrid Battery Thermal Keep Control Mode is complete."

2024 NX 250, NX 350, NX 350h, NX 450h+ Pre-Delivery Service (PDS)

Navigation — Set Date & Time by GPS

Before vehicle delivery, we are asking that dealers please confirm that they have turned the “Set time by GPS” functionality on in each vehicle. Therefore, it is necessary to turn the Set Time by GPS setting to the ON position.

1. Turn the engine switch (power switch) to the ON position (ON mode).
2. Navigate the following menus in the head unit: *Settings – General – Date & Time – Set date & time by GPS.*
3. Ensure the Set date & time by GPS function is set to the ON position.

Set Remote Park Feature to OFF

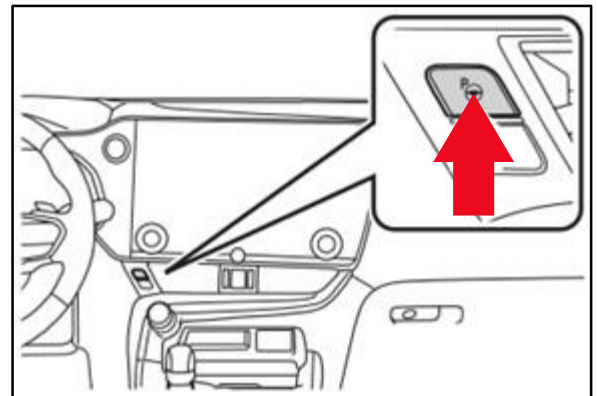
Some NX model vehicles may be equipped with the Advanced Park feature. The Advanced Park system assists in safe and smooth parking in a target parking space by displaying the blind spots around the vehicle, displaying the parking spot through a bird’s eye view, delivering operation guidance through displays and buzzer operation, changing the shift position, operating the steering wheel, operating the accelerator pedal, and operating brake pedal. The Lexus smartphone app Remote Park feature will NOT be available for NX model vehicles equipped with Advanced Park. To minimize guest dissatisfaction, follow the procedure below to disable the Remote Park feature on the vehicle:

1. Start the vehicle or set to ACC ON.
2. Press the Advanced Park switch.
3. Press the Advanced Park settings button.
4. Toggle the Remote Park indicator to OFF (blue is ON, gray is OFF).
5. Exit by pressing “X” at the top left of the screen.
6. Press the Advanced Park button.
7. Confirm the Remote Park button is no longer present.

NOTE

The Remote Park feature is factory preset to the ON position.

Figure 6. Advanced Park Switch

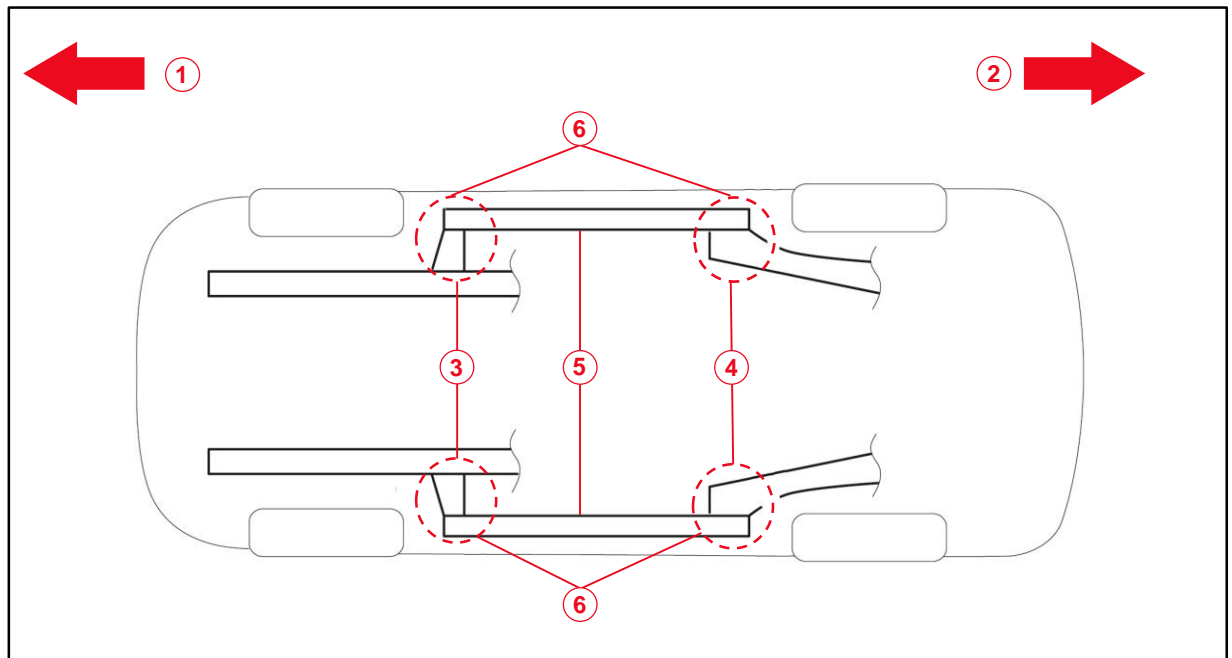


2024 NX 250, NX 350, NX 350h, NX 450h+ Pre-Delivery Service (PDS)

Installation of Rubber Body Plugs

1. Confirm the number of plugs in the glove box. If two plugs are present, perform substep 2A ONLY. If four plugs are present, perform substep 2A AND substep 2B.
2. Install plugs according to the following instructions by confirming the number of plugs in the glove box.
 - A. Install two plugs in the rear side member hole or rocker inner hole.
 - B. Install two plugs in the torque box hole or rocker inner hole.

Figure 7.



1	Front Side
2	Rear Side
3	Torque Box Hole or Rocker Inner Hole
4	Rear Side Member Hole or Rocker Inner Hole
5	Rocker Inner
6	Install Plug Here (if Applicable)

NOTICE

- The installation of these plugs is required to prevent rust.
- These plugs are stored in the glove box.
- The number of plugs may vary according to production locations in the same vehicle model.