



VOLUNTARY SERVICE CAMPAIGN

Classification: EC18-020A	Reference: NTB18-050A	Date: March 9, 2023
------------------------------	--------------------------	------------------------

VOLUNTARY SERVICE CAMPAIGN 2014-2017 ROGUE; ECM REPROGRAM

This bulletin has been amended. See **AMENDMENT HISTORY** on the last page.
Please discard previous versions of this bulletin.

CAMPAIGN ID #: PC633 and P8325
APPLIED VEHICLES: 2014-2017 Rogue (T32)
APPLIED ENGINES QR25DE

**Check Service COMM or Dealer Business Systems (DBS)
National Service History to confirm campaign eligibility.**

INTRODUCTION

Nissan is conducting this voluntary service campaign on certain specific model year 2014-2017 Rogue vehicles that were registered in the states of Arizona or Nevada in July 2018. The Engine Control Module (ECM) software will be reprogrammed. This service will be performed at no charge to the customer for parts or labor.

IDENTIFICATION NUMBER

Nissan has assigned identification numbers PC633 and P8325 to this campaign. This number must appear on all communication and documentation of any nature dealing with this campaign.

DEALER RESPONSIBILITY

Dealers are to repair vehicles falling within range of this campaign that enter the service department. This includes vehicles purchased from private parties, vehicles presented by transient (tourists) owners, and vehicles in a dealer's inventory.

Nissan Bulletins are intended for use by qualified technicians, not 'do-it-yourselfers'. Qualified technicians are properly trained individuals who have the equipment, tools, safety instruction, and know-how to do a job properly and safely. NOTE: If you believe that a described condition may apply to a particular vehicle, DO NOT assume that it does. See your Nissan dealer to determine if this applies to your vehicle.

SERVICE PROCEDURE

IMPORTANT: Before starting, make sure:

- ASIST on the CONSULT PC has been synchronized (updated) to the current date.
- All CONSULT-III plus (C-III plus) software updates (if any) have been installed.
- The CONSULT PC is connected to the Internet (Wi-Fi or cable).

HINT:

- Most instructions for reprogramming with C-III plus are displayed on the CONSULT PC screen.
- If you are not familiar with the reprogramming procedure, [click here](#). This will link you to the "**CONSULT- III plus Reprogramming for Engine or Transmission Control Module (ECM or TCM)**" general procedure.

Preparation for Reprogramming

- Take the vehicle for a 10 minute drive in order to meet the following Idle Air Volume Learn (IAVL) conditions:
 - Engine coolant temperature: 70-100°C (158-212°F)
 - Battery voltage: More than 12.9V (At idle)
 - Transmission: Warmed up



Figure 1

HINT:

- After ECM reprogramming is complete, you will be required to perform Throttle Valve Closed Position, Idle Air Volume Learn (IAVL), and Accelerator Closed Position.
- The above conditions are required for the IAVL to complete.

NOTICE

- Connect a battery maintainer or smart charger to the 12V battery. If the vehicle battery voltage drops below 12.0V or above 15.5V during reprogramming, the ECM may be damaged.
 - Turn the hazard warning lamps ON.
 - Turn OFF all other vehicle electrical loads, such as exterior lights, interior lights, HVAC, blower, rear defogger, audio, NAVI, seat heater, steering wheel heater, etc. If a vehicle electrical load remains ON, the ECM may be damaged.
 - Be sure to connect the AC Adapter. If the CONSULT PC battery voltage drops during reprogramming, the process will be interrupted and the ECM may be damaged.
 - Turn OFF all external Bluetooth® devices (e.g., cell phones, printers, etc.) within range of the CONSULT PC and the VI. If Bluetooth® signal waves are within range of the CONSULT PC and the VI during reprogramming, reprogramming may be interrupted and the ECM may be damaged.
1. Connect the CONSULT PC to the vehicle to begin the reprogramming procedure.
 2. Start C-III plus on the CONSULT PC.
 3. If prompted, select **USA/Canada Dealers** from the drop-down menu, and then select **OK.**
 4. Login using your NNAnet credentials.

IMPORTANT: If not prompted to enter your username and password, the CONSULT PC may not be connected to Wi-Fi. Close C-III plus, confirm the CONSULT PC is connected to Wi-Fi, and then reopen C-III plus.

5. Wait for the VI to be recognized / connected.
 - The **Serial No.** will display when the VI is recognized / connected.
6. Select **Re/programming, Configuration.**

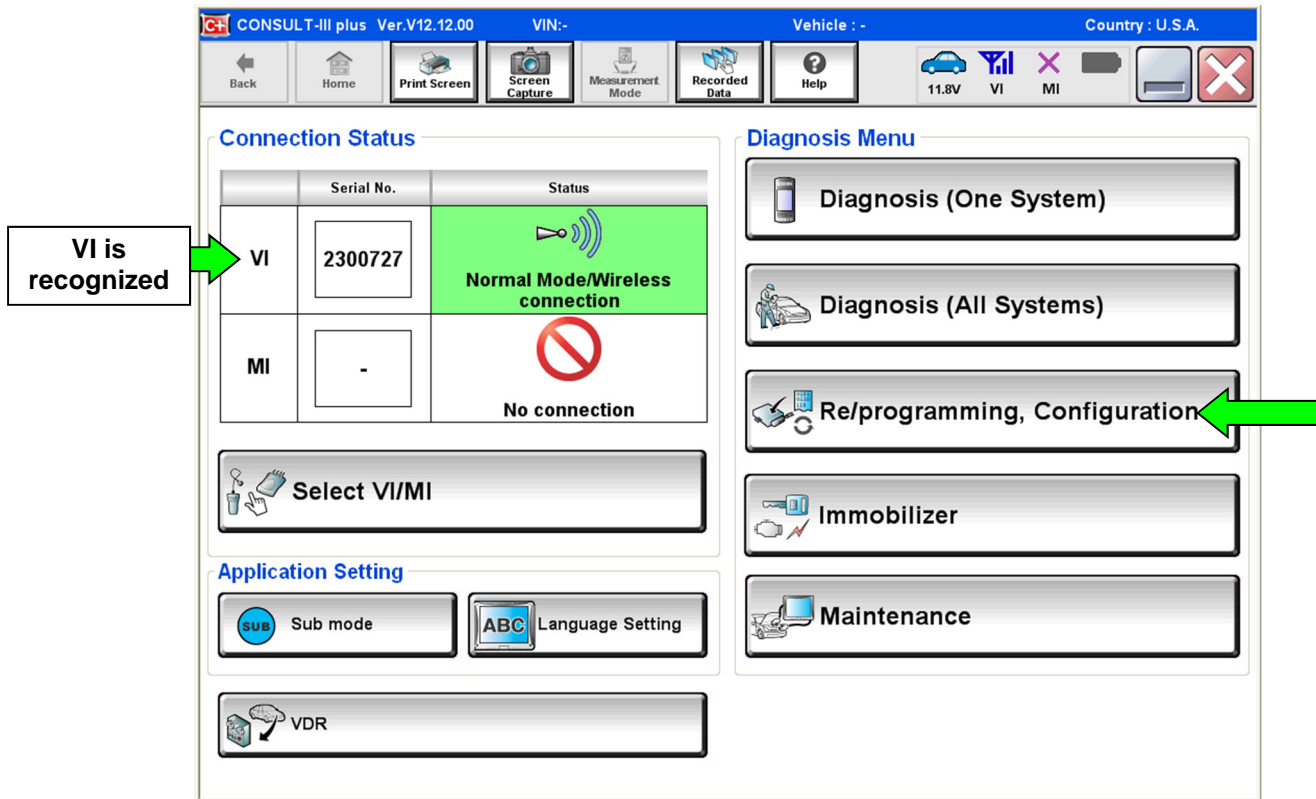


Figure 2

7. Follow the C-III plus on-screen instructions and navigate to the screen shown in Figure 3 on page 5.

8. When you get to the screen shown in Figure 3, confirm this bulletin applies as follows:
 - A. Find the ECM **Part Number** and write it on the repair order.

HINT: This is the current ECM Part Number (P/N).

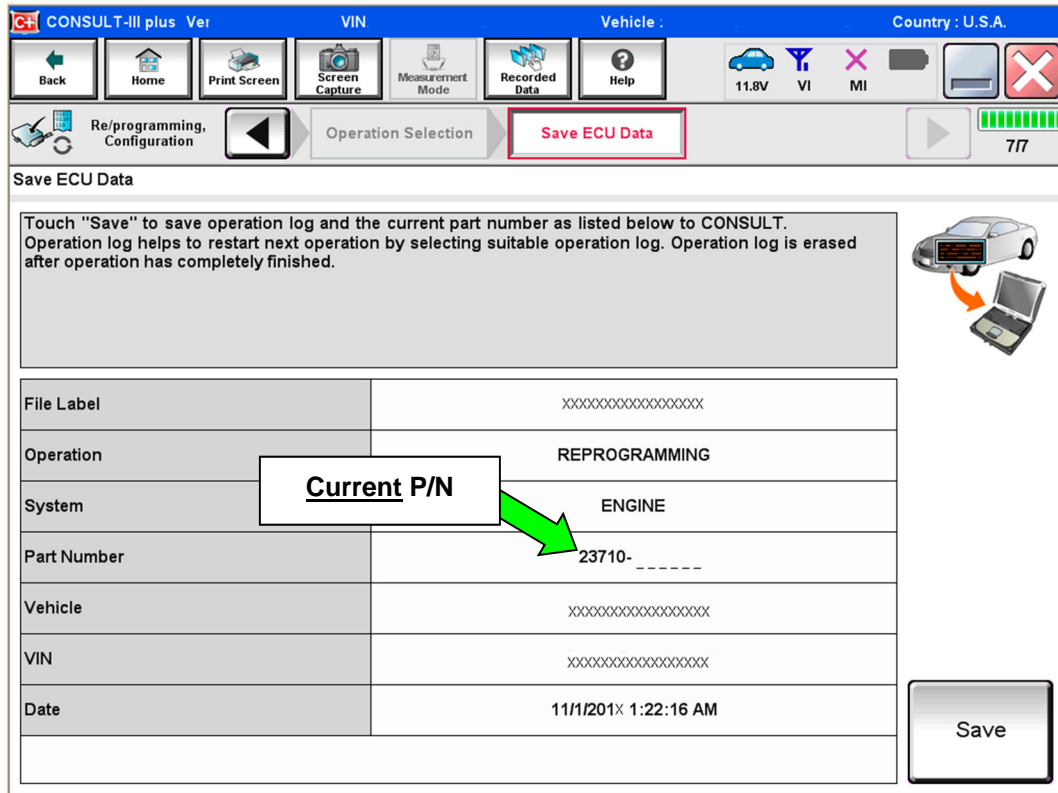


Figure 3

- B. Compare the P/N you wrote down to the numbers in the **Current ECM Part Number** column in **Table A**, on page 6.
 - If there is a match, continue with the reprogramming procedure.
 - If there is not a match, reprogramming is not needed. Proceed to “Does Not Require ECM Reprogram” in the **CLAIMS INFORMATION** section of this bulletin.

Table A - Rogue

Model	Year	Current ECM Part Number: 23710 -
<p align="center">Rogue with QR25DE Engine</p>	2014	4BA1A, 4BA1B, 4BA1C, 4BA1D 4BA2A, 4BA2B, 4BA2C, 4BA2D
	2015	5HA1A, 5HA1B, 5HA1C, 5HA1D 5HA2A, 5HA2B, 5HA2C, 5HA2D 5HA3A, 5HA3B, 5HA3C, 5HA3D 5HA4A, 5HA4B, 5HA4C, 5HA4D
	2016	4BU0A, 4BU1A, 4BU2A, 4BU3A 4BU4A, 4BU5A, 4BU6A, 4BU7A 4BT0A, 4BT0B, 4BT1A, 4BT1B 4BT2A, 4BT2B, 4BT3A, 4BT3B 4BT4A, 4BT4B, 4BT5A, 4BT5B 4BT6A, 4BT6B, 4BT7A, 4BT7B 5HB0A, 5HB1A, 5HB2A, 5HB3A 5HJ0A, 5HJ0B, 5HJ0C, 5HJ0D, 5HJ0E 5HJ1A, 5HJ1B, 5HJ1C, 5HJ1D, 5HJ1E 5HJ2A, 5HJ2B, 5HJ2C, 5HJ2D, 5HJ2E 5HJ3A, 5HJ3B, 5HJ3C, 5HJ3D, 5HJ3E 5HJ4A, 5HJ4B, 5HJ5A, 5HJ5B 5HJ6A, 5HJ6B, 5HJ7A, 5HJ7B 6FJ0A, 6FJ0B, 6FJ0C, 6FJ0D, 6FJ0E 6FJ1A, 6FJ1B, 6FJ1C, 6FJ1D, 6FJ1E 6FJ2A, 6FJ2B, 6FJ2C, 6FJ2D, 6FJ2E 6FJ3A, 6FJ3B, 6FJ3C, 6FJ3D, 6FJ3E 6FJ4A, 6FJ4B, 6FJ4C, 6FJ4D, 6FJ4E 6FJ5A, 6FJ5B, 6FJ5C, 6FJ5D, 6FJ5E 6FJ6A, 6FJ6B, 6FJ6C, 6FJ6D, 6FJ6E 6FJ7A, 6FJ7B, 6FJ7C, 6FJ7D, 6FJ7E 6FK0A, 6FK0B, 6FK0C, 6FK0D 6FK1A, 6FK1B, 6FK1C, 6FK1D 6FK2A, 6FK2B, 6FK2C, 6FK2D, 6FK3C, 6FK3D

Table A - Rogue (continued)

<p>Rogue with QR25DE Engine</p>	<p>2017</p>	<p>5HK0A, 5HK0B, 5HK0C, 5HK0D 5HK1A, 5HK1B, 5HK1C, 5HK1D 5HK2C, 5HK2D 6FL0A, 6FL0B, 6FL0C, 6FL0D 6FL1A, 6FL1B, 6FL1C, 6FL1D 6FL2A, 6FL2B, 6FL2C, 6FL2D 6FL3A, 6FL3B, 6FL3C, 6FL3D, 6FL4C, 6FL4D 6FL5C, 6FL5D, 6FL6C, 6FL6D 7FF0A, 7FF1A, 7FF2A, 7FF3A 7FF4A, 7FF5A, 7FF6A, 7FF7A, 7FF8A 7FP0A, 7FP0B, 7FP0C, 7FP0D 7FP1A, 7FP1B, 7FP1C, 7FP1D 7FP2A, 7FP2B, 7FP2C, 7FP2D 7FP3A, 7FP3B, 7FP3C, 7FP3D 7FP4C, 7FP4D, 7FP5C, 7FP5D 7FP6C, 7FP6D 7FR3A, 7FR4A, 7FR5A, 7FR6A</p>
--	-------------	--

9. Follow the on-screen instructions to navigate C-III plus and reprogram the ECM.

HINT:

- In some cases, more than one new P/N for reprogramming is available.
 - In this case, the screen in Figure 4 displays.
 - Select and use the reprogramming option that **does not** have the message “Caution! Use ONLY with NTBXX-XXX”.
- If you get this screen and it is blank (no reprogramming listed), it means there is no reprogramming available for this vehicle.

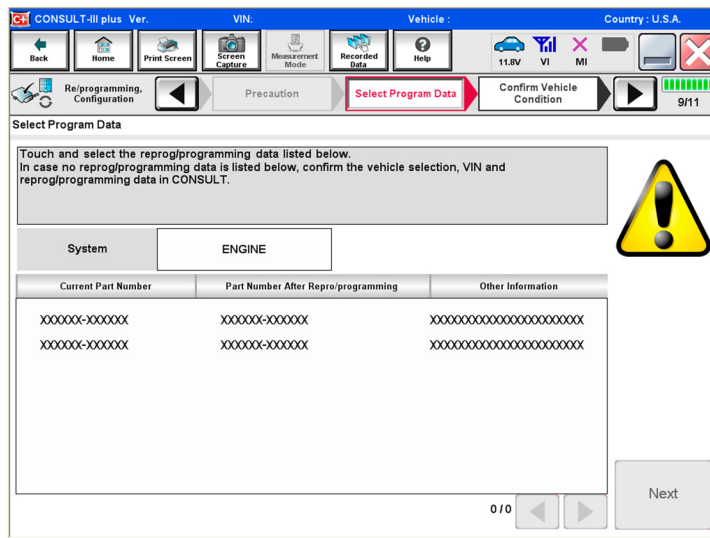


Figure 4

10. When the screen in Figure 5 displays, reprogramming is complete.

HINT: If the screen in Figure 5 does not display (which indicates reprogramming did not complete), refer to the information on the next page.

11. Disconnect the battery charger from the vehicle.

12. Select **Next**.

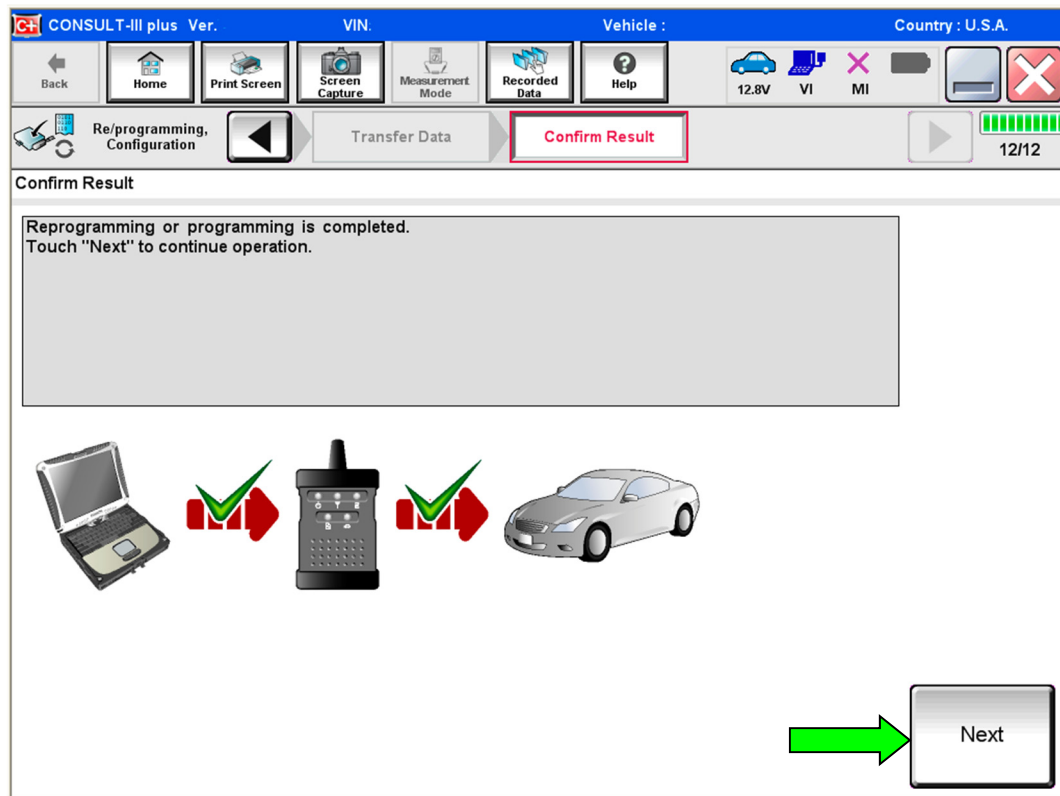


Figure 5

HINT:

- In the next steps (page 11), you will perform **Throttle Valve Closed Position, Idle Air Volume Learn, Accelerator Closed Position, and Erase DTCs.**
- These operations are required before C-III plus will provide the final reprogramming confirmation report.

ECM recovery:

Do not disconnect VI or shut down C-III plus if reprogramming does not complete.

If reprogramming does not complete and the “!” icon displays as shown in Figure 6:

- Check battery voltage (12.0-15.5 V).
- Ignition is ON, engine OFF.
- External Bluetooth® devices are OFF.
- All electrical loads are OFF.
- **Select retry and follow the on screen instructions.**
- “Retry” may not go through on first attempt and can be selected more than once.

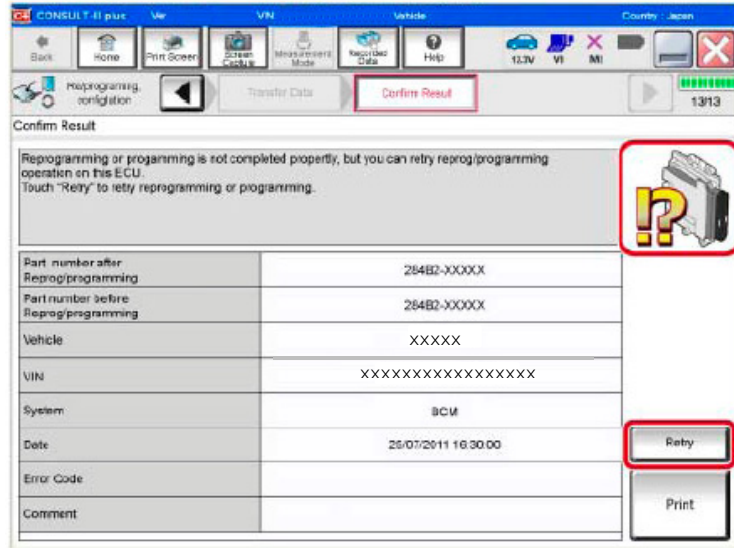


Figure 6

If reprogramming does not complete and the “X” icon displays as shown in Figure 7:

- Check battery voltage (12.0 -15.5 V).
- CONSULT A/C adapter is plugged in.
- Ignition is ON, engine OFF.
- Transmission is in Park.
- All C-III plus / VI cables are securely connected.
- All C-III plus updates are installed.
- **Select Home, and restart the reprogram procedure from the beginning.**

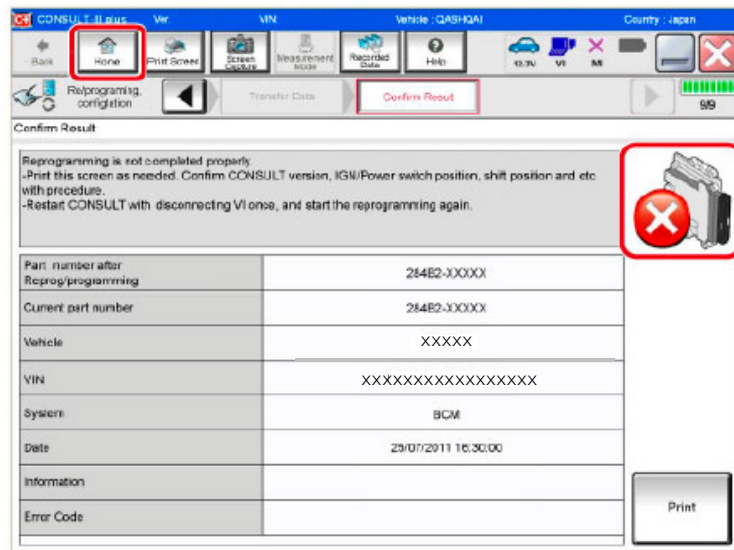


Figure 7

13. Follow the on-screen instructions to perform the following:

- **Throttle Valve Closed Position**
- **Idle Air Volume Learn (IAVL)**

HINT:

- **Listed below are common required conditions for IAVL to complete.**
- **If IAVL does not complete within a few minutes, a condition may be out of range. Refer to the appropriate Electronic Service Manual (ESM) for specific conditions required for the vehicle you are working on.**
 - Engine coolant temperature: 70 -100°C (**158 -212°F**)
 - Battery voltage: More than 12.9V (At idle)
 - Selector lever: P or N
 - Electric load switch: OFF (Air conditioner, headlamp, rear window defogger)
 - Steering wheel: Neutral (Straight-ahead position)
 - Vehicle speed: Stopped
 - Transmission: Warmed up (ATF TEMP SE less than 0.9V)
- **Accelerator Pedal Close Position Learning**
- **Erase All DTCs**

Continue to the next page.

14. When the entire reprogramming process is complete, the screen in Figure 8 will display.
15. Verify the before and after part numbers are different.
16. Print a copy of this screen (Figure 8) and attach it to the repair order for warranty documentation.
17. Select **Confirm**.

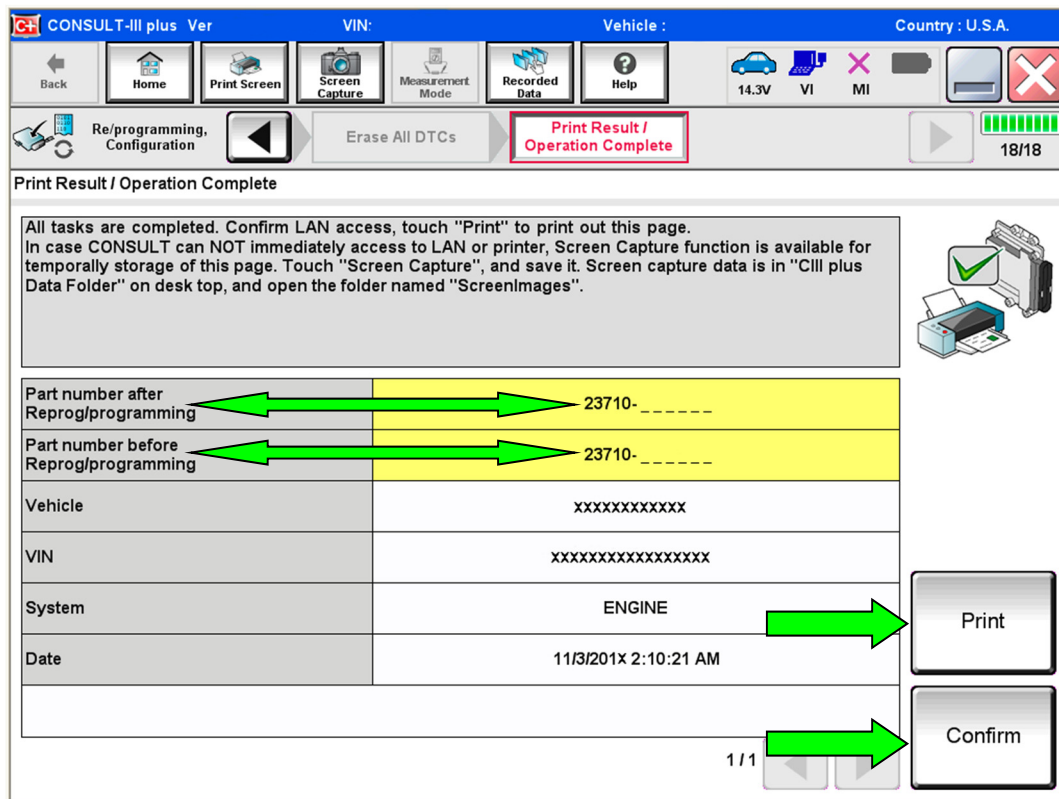


Figure 8

18. Close C-III plus.
19. Turn the ignition OFF.
20. Disconnect the VI from the vehicle.

CLAIMS INFORMATION

Submit a Primary Part (PP) type line claim using the following claims coding:

CAMPAIGN ("CM") ID	DESCRIPTION	OP CODE	FRT
PC633	Reprogram ECM	PC6330	0.5 hrs.
	Does Not Require ECM Reprogram	PC6333	0.3 hrs.
P8325	Reprogram ECM	P83250	0.5 hrs.
	Does Not Require ECM Reprogram	P83251	0.3 hrs.

AMENDMENT HISTORY

PUBLISHED DATE	REFERENCE	DESCRIPTION
December 8, 2022	NTB18-050	Original bulletin published
March 9, 2023	NTB18-050A	Changes to page 1, other changes throughout

